



Please review all specifications and requirements carefully.

Addendum Description

Addendum 2 to address additional questions received and supply additional materials.

Notice Modifications

Notice Information	From Value	To Value
No entries		

Category Modifications

Added Categories
No Categories Added

Removed Categories
No Categories Removed

Added Documents[A]

Document	Size	Uploaded Date	Language
Q&A Document 2.pdf [pdf]	3 Kb	04/02/2026 11:13 AM CDT	English
Dock 15 BATHYMETRIC SURVEY [pdf]	716 Kb	04/02/2026 11:15 AM CDT	English
Dock 16 BATHYMETRIC SURVEY [pdf]	792 Kb	04/02/2026 11:15 AM CDT	English
Dredge Pipeline Path [pdf]	889 Kb	04/02/2026 11:15 AM CDT	English

Questions & Answers - 2

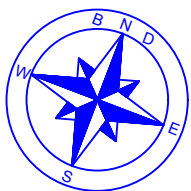
Solicitation

CDM-070426-60 - CARGO DOCKS 15 & 16 MAINTENANCE DREDGING

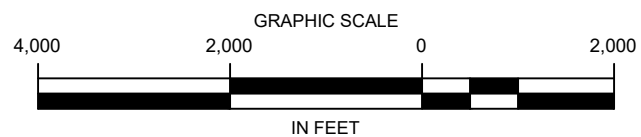
Buying Organization

Port of Brownsville

No	Question/Answer	Question Date
Q6	<p>Question: Additional Information</p> <p>Prior Bids for other POB docks that had pricing requirements for debris cleaning/raking had a side scan sonar survey provided with objects identified, please provide if available</p> <p>Answer: No magnometer scan or other surveys were done to identify debris in either of the dock areas.</p>	04/01/2026
Q7	<p>Question: Additional Information</p> <p>Please provide the latest hydrographic survey with bathymetric data showing latest depths as shown on the screen during pre-bid, if possible</p> <p>Answer: Please see the attached bathymetric surveys, shown in our pre-bid meeting.</p>	04/01/2026
Q8	<p>Question: Additional Information</p> <p>Please provide coordinates of discharge area within PA 7 that is required for the contractor to discharge into.</p> <p>Answer: Please see the attached aerial map that includes pipeline routes and coordinates.</p>	04/01/2026
Q9	<p>Question: Clarification</p> <p>Agreement states '3.1 The Work shall be substantially completed within the number of calendar days specified in the Bid form from issuance of the Notice to Proceed and shall be fully completed within seven (7) working days after that date.'</p> <p>If debris is needed to removed and both docks are needing dredged, 7 days is not a reasonable time frame to perform all the work necessary. 12,500 foot of pipe will take days to install. The two docks will take some time to mechanically dig/rake for debris (up to a week or more) and each dock may take up to 1 week to dredge. There will need to be 1 day for AD surveys and final approval. Up to 4 weeks may be needed in contract time to reasonably perform all the functions to complete the dock dredging at 15 & 16 Cargo Docks.</p> <p>Answer: We cannot have the docks closed for more than 7 days.</p>	04/01/2026



DREDGE PIPELINE PATH



PORT OF
BROWNSVILLE
the port that works

APRIL 2026

BROWNSVILLE SHIP CHANNEL

82+150	82+125	82+100	82+075	82+050	82+025	82+000	81+975	81+950	81+925	81+900	81+875	81+850	81+825	81+800	81+775	81+750	81+725	81+700	81+675	81+650	81+625	81+600	81+575	81+550	81+525	81+500	81+475	81+450	81+425	81+400	81+375	81+350	81+325	81+300	81+275				
56.4'	56.5'	56.4'	56.5'	56.5'	56.7'	56.7'	57.2'	56.8'	56.6'	56.8'	56.7'	56.6'	56.5'	56.4'	56.6'	56.8'	56.6'	56.5'	56.7'	56.8'	56.9'	57.3'	57.2'	56.8'	56.5'	56.7'	56.6'	56.7'	56.7'	57.0'	56.9'	56.9'	56.9'	56.9'	56.9'	56.9'	56.9'	56.9'	
56.6'	56.5'	56.4'	56.5'	56.6'	56.6'	57.0'	56.8'	56.6'	56.4'	56.6'	56.8'	56.5'	56.6'	56.6'	56.5'	56.7'	56.6'	56.4'	56.6'	56.9'	57.1'	56.9'	56.6'	56.4'	56.5'	56.3'	56.4'	56.5'	56.3'	56.4'	56.5'	56.7'	56.9'	56.7'	56.7'	56.7'	56.7'	56.7'	
56.6'	56.4'	56.4'	56.4'	56.6'	56.5'	57.1'	56.7'	56.5'	56.3'	56.6'	56.7'	56.6'	56.6'	56.5'	56.4'	56.7'	56.5'	56.4'	56.6'	56.8'	57.1'	56.7'	56.5'	56.4'	56.4'	56.3'	56.4'	56.3'	56.3'	56.3'	56.6'	56.6'	56.6'	56.6'	56.6'	56.6'	56.6'	56.6'	56.6'
56.5'	56.4'	56.4'	56.4'	56.5'	56.5'	57.1'	56.6'	56.4'	56.5'	56.5'	56.6'	56.5'	56.6'	56.4'	56.4'	56.8'	56.6'	56.6'	56.7'	56.9'	57.0'	56.7'	56.4'	56.4'	56.3'	56.4'	56.2'	56.3'	56.1'	56.5'	56.5'	56.5'	56.6'	56.5'	56.6'	56.5'	56.6'	56.5'	56.5'
56.4'	56.4'	56.5'	56.4'	55.9'	56.1'	56.8'	56.3'	56.2'	56.3'	56.3'	56.5'	56.5'	56.5'	56.3'	56.2'	56.6'	56.4'	56.5'	56.6'	56.8'	57.0'	56.6'	56.4'	56.3'	56.2'	56.3'	56.1'	56.5'	56.5'	56.5'	56.6'	56.5'	56.6'	56.5'	56.6'	56.5'	56.6'	56.5'	56.5'
55.1'	56.2'	56.5'	55.7'	54.5'	52.6'	54.0'	56.0'	54.3'	55.0'	55.2'	55.0'	55.5'	55.1'	55.6'	55.455	55.0'	55.7'	54.7'	55.2'	55.0'	54.6'	53.7'	56.4'	54.7'	54.9'	54.8'	55.2'	54.4'	55.4'	54.6'	55.2'	56.0'	55.0'	55.0'	51.8'	53.0'	53.0'	53.0'	
49.4'	50.7'	51.4'	49.5'	49.4'	50.2'	49.8'	48.8'	49.6'	49.8'	49.6'	49.7'	49.4'	49.0'	49.2'	48.9'	49.6'	49.5'	49.2'	50.2'	50.2'	50.2'	50.4'	50.3'	49.8'	49.7'	48.9'	48.8'	49.6'	49.1'	48.9'	50.0'	49.6'	49.6'	49.6'	49.9'	48.8'	48.8'		
45.2'	45.6'	44.8'	44.2'	45.7'	46.0'	45.1'	44.6'	44.5'	44.7'	44.3'	44.2'	44.0'	43.7'	44.2'	43.9'	44.0'	43.8'	43.4'	43.0'	45.0	43.6'	43.8'	43.7'	44.0'	44.2'	45.2'	45.5'	45.7'	46.3'	46.1'	46.0'	45.9'	45.7'	45.8'	45.6'	45.5'	45.5'		
43.4'	43.7'	44.0'	44.0'	44.3'	45.1'	44.6'	44.4'	44.4'	44.4'	44.0'	43.8'	43.5'	42.9'	43.4'	43.4'	43.3'	42.9'	42.6'	42.7'	43.1'	43.6'	43.6'	43.8'	43.8'	44.7'	45.2'	45.6'	46.2'	46.4'	46.2'	46.1'	45.9'	45.9'	45.8'	45.6'	45.5'	45.5'		
43.0'	43.7'	43.8'	43.8'	43.7'	44.5'	44.6'	44.5'	44.6'	44.2'	43.8'	43.7'	43.0'	43.0'	43.0'	43.2'	43.0'	42.8'	42.6'	42.8'	43.0'	43.4'	43.3'	43.6'	43.5'	44.1'	45.0'	45.6'	46.2'	46.6'	46.3'	46.0'	46.2'	46.0'	46.2'	46.0'	45.3'	45.8'		
43.1'	43.5'	43.5'	43.9'	43.8'	44.3'	44.5'	45.1'	44.4'	44.1'	43.2'	43.4'	42.8'	42.9'	43.4'	42.8'	42.8'	42.8'	42.6'	42.8'	43.1'	43.3'	43.4'	43.5'	43.3'	43.9'	44.9'	45.8'	46.2'	46.7'	46.6'	46.4'	46.5'	46.5'	46.4'	45.9'	45.6'	45.6'		
42.8'	42.9'	43.3'	44.0'	44.0'	44.2'	44.5'	44.8'	44.3'	43.9'	43.2'	43.3'	43.3'	42.9'	44.2'	42.8'	42.6'	42.6'	42.6'	42.9'	43.0'	43.6'	43.4'	43.4'	43.5'	43.8'	45.0'	46.0'	46.1'	46.6'	46.5'	46.2'	46.5'	46.2'	46.5'	46.5'	45.8'	45.3'	45.3'	
42.4'	42.6'	43.6'	44.0'	43.7'	44.1'	44.3'	44.5'	43.9'	43.7'	44.6'	43.2'	43.8'	42.8'	43.6'	42.6'	42.5'	42.3'	42.6'	42.9'	43.0'	43.4'	43.4'	44.9'	43.6'	43.4'	44.5'	45.6'	46.2'	46.8'	46.3'	45.7'	46.2'	46.3'	45.6'	45.6'	44.8'	44.8'		
42.4'	42.8'	44.1'	43.8'	44.7'	43.7'	43.9'	44.0'	43.6'	43.4'	44.7'	43.2'	43.0'	43.0'	43.0'	42.7'	42.4'	42.4'	43.0'	42.8'	43.1'	43.4'	43.3'	44.4'	43.4'	44.2'	44.8'	46.2'	46.4'	45.7'	44.5'	45.1'	45.7'	44.8'	44.8'	44.8'	44.0'	44.0'		
41.6'	42.6'	43.0'	43.3'	44.4'	43.5'	43.6'	43.7'	43.5'	43.3'	44.1'	43.2'	43.0'	42.8'	43.0'	42.6'	42.3'	42.6'	43.0'	42.4'	43.1'	43.3'	43.2'	43.3'	42.9'	44.0'	43.9'	44.6'	45.4'	45.6'	44.9'	43.3'	43.6'	43.6'	43.6'	43.6'	43.6'	43.6'		
41.4'	41.8'	42.4'	42.6'	43.2'	42.8'	43.1'	43.6'	43.4'	43.3'	43.3'	43.4'	42.8'	42.6'	42.7'	43.0'	42.2'	42.5'	42.3'	42.3'	42.6'	43.3'	43.3'	42.8'	42.5'	43.0'	43.9'	43.7'	45.2'	45.0'	45.2'	44.3'	43.5'	43.3'	43.0'	43.2'	43.1'	43.1'		
41.3'	41.4'	41.9'	41.9'	42.7'	42.3'	43.2'	43.6'	43.7'	44.0'	43.7'	43.2'	42.5'	42.2'	42.2'	42.2'	41.8'	41.4'	41.8'	41.4'	41.6'	42.0'	42.0'	42.4'	42.8'	42.4'	42.8'	43.9'	44.1'	44.2'	43.7'	42.6'	42.5'	42.2'	42.0'	42.4'	42.4'	42.4'		
40.0'	39.6'	40.3'	41.2'	41.1'	41.2'	39.8'	40.4'	40.7'	40.4'	40.2'	40.4'	39.7'	39.0'	39.6'	39.2'	39.6'	37.0'	39.3'	38.2'	39.0'	37.0'	39.4'	38.2'	38.5'	38.7'	39.6'	40.6'	41.0'	40.2'	42.2'	41.7'	41.4'	41.0'	40.9'	43.6'	43.6'	43.6'		
37.4'	37.7'	37.3'	39.4'	38.2'	39.2'																																		

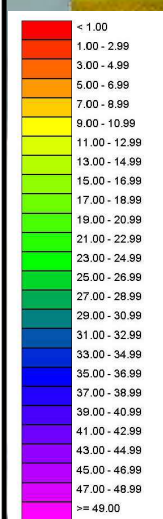
FENDERLINE
N:16,511,541.6
E:1,352,062.7

DOCK CORNER
N:16,511,889.7
E:1,352,192.5

CARGO DOCK 15

DOCK CORNER
N:16,511,812.6
E:1,352,749.6

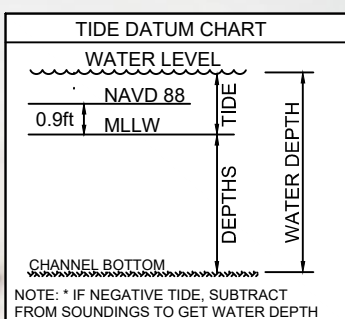
FENDERLINE
N:16,511,865.9
E:1,352,875.4



SOUNDINGS
ELEVATION
(FEET)



Registered Professional Land Surveyor
Allen W. Kerley, R.P.L.S. No. 5427



NOTES:
1. SOUNDINGS WERE RECORDED BY T. BAKER SMITH ON 20 FEBRUARY, 2026. SEA FLOOR CONDITIONS ARE SUBJECT TO CHANGE.
2. DATA WAS ACQUIRED USING A R2SONIC 2020 MULTIBEAM ECHOSOUNDER OPERATING AT 200 KHZ.
3. DATA WAS PROCESSED WITH HYPACK HYDROGRAPHIC SURVEY SOFTWARE. SORTED DATA WAS CALCULATED USING AVERAGE DEPTH WITHIN 3X3 FT CELLS.
4. HORIZONTAL DATUM: NAD83 (2011), TEXAS SOUTH ZONE. ALL DISTANCES ARE U.S. SURVEY FEET (GRID).
5. VERTICAL DATUM: MEAN LOWER LOW WATER (MLLW) "BRAZOS"
N: 16,554,943.9'
E: 1,422,680.0'
ELEV: 5.1' MLLW (4.2' NAVD88)

TBS
T. BAKER SMITH
A CENTURY OF SOLUTIONS
3854 FM 1069
Aransas Pass, TX 78336
(361)334-5719 - tbsmith.com
TBPLS #10194575

SCALE: 1" = 60'

REV. NO: 00 REV. DATE: --/-- REV. BY: ---
REVISION DESCRIPTION: --

DRAWN BY: CDW APPROVED BY: BSG
DATE: 02/23/2026 JOB NO: 2026.0245
DRAWING NAME: POB CARGO DOCK 15 20FEB2026
PROJECTION: TEXAS STATE PLANE SOUTH ZONE
GEO. DATUM: NAD83 (2011) | VERT. DATUM: MLLW
GRID UNITS: US SURVEY FEET
SHEET NO: 1 OF 1

BATHYMETRIC SURVEY
PORT OF BROWNSVILLE
CARGO DOCK 15
AN EXHIBIT OF A
BATHYMETRIC SURVEY
LOCATED IN
BROWNSVILLE, TEXAS

3/2/2026 - P:\Y-2026\2026.0245\DRAWINGS\CD16\POB_CARGO DOCK 16_26FEB2026.DWG

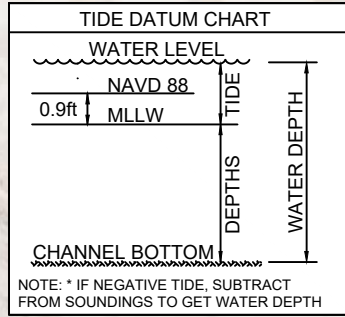
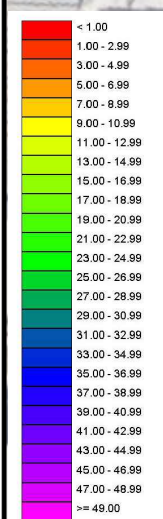
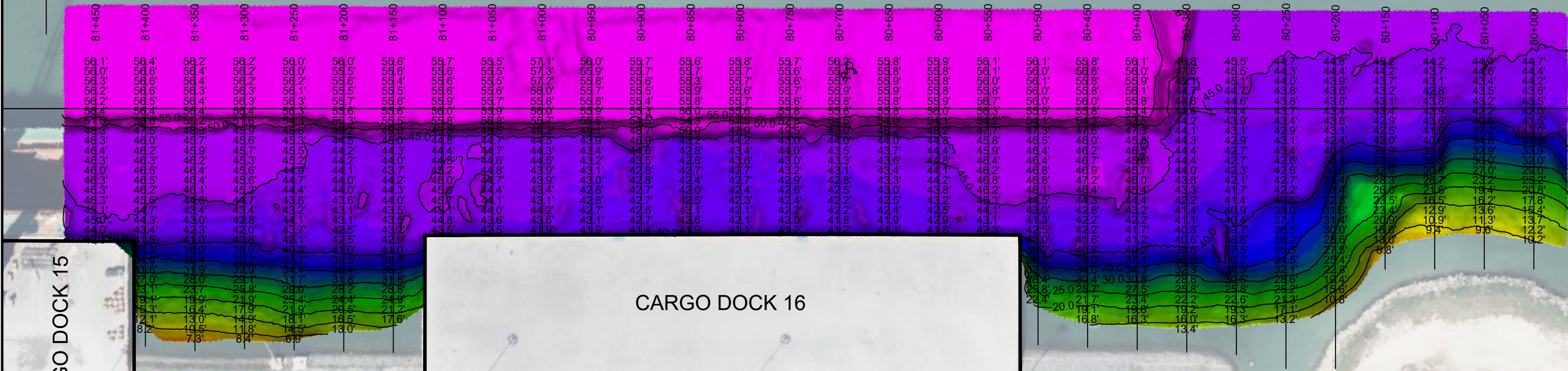
81+500

81+000

80+500

80+000

☪ BROWNSVILLE SHIP CHANNEL



NOTES:

- SOUNDINGS WERE RECORDED BY T. BAKER SMITH ON 26 FEBRUARY, 2026. SEA FLOOR CONDITIONS ARE SUBJECT TO CHANGE.
- HORIZONTAL DATUM: NAD83 (2011), TEXAS SOUTH ZONE. ALL DISTANCES ARE U.S. SURVEY FEET (GRID).
- VERTICAL DATUM: MEAN LOWER LOW WATER (MLLW)

"BRAZOS"
N: 16,554,943.9'
E: 1,422,680.0'
ELEV: 5.1' MLLW (4.2' NAVD88)

T. BAKER SMITH
A CENTURY OF SOLUTIONS
3854 FM 1069
Aransas Pass, TX 78336
(361)334-5719 - tbsmith.com
TBPLS #10194575

SCALE: 1" = 100'

100' 50' 0' 50' 100'

REV. NO: 00 REV. DATE: --/-- REV. BY: ---

REVISION DESCRIPTION:
--

DRAWN BY: CDW	APPROVED BY: AWK
DATE: 03/02/2026	JOB NO: 2026.0245
DRAWING NAME: POB CARGO DOCK 16 26FEB2026	
PROJECTION: TEXAS STATE PLANE SOUTH ZONE GEO. DATUM: NAD83 (2011) VERT. DATUM: MLLW GRID UNITS: US SURVEY FEET	
SHEET NO: 1	OF 1

BATHYMETRIC SURVEY
PORT OF BROWNSVILLE
CARGO DOCK 16
AN EXHIBIT OF A
BATHYMETRIC SURVEY
LOCATED IN
BROWNSVILLE, TEXAS