



**WELCOME TO
THE PORT OF BROWNSVILLE**

OUR COMMITMENT

Since 1936



JOBS

Cultivate sustainable workforce opportunities and develop human capital.



COMMUNITY

Promote educational initiatives and improve quality of life in the Rio Grande Valley.



ENVIRONMENT

Preserve the regional ecosystem and natural resources for present and future generations.



INDUSTRY

Support existing industries and foster economic growth by connecting the region with global markets.



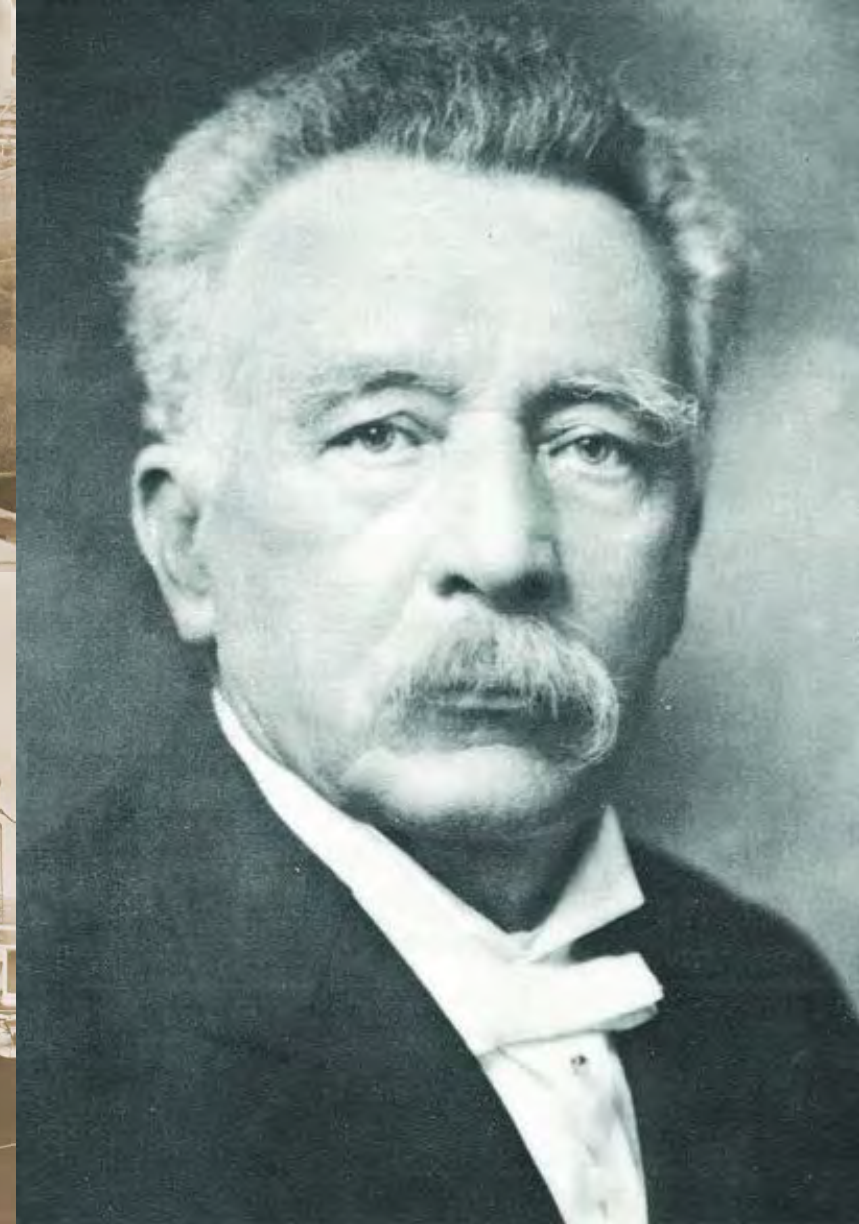
NAVIGATING THROUGH TIME

Since beginning operations in **1936**, the port has grown into a major center for intermodal transportation and industrial development.

LITTLE BIT OF HISTORY

At the turn of the 20th Century, **Commodore Louis Cobolini** led the efforts to establish a deepwater port in the Rio Grande Valley. He imagined that a port would bring significant economic impact to a predominantly agricultural region.

His vision is now a reality as the Port of Brownsville is now the largest economic engine in the Rio Grande Valley, and one of the top foreign trade zones in the country.



THEN

Port of Brownsville

Circa 1938



NOW

Port of Brownsville
Present Day



Common commodities like cotton, grains, and tropical fruits from the past have morphed into present-day cargoes of steel, aluminum, minerals, gasoline, diesel, and components for the wind energy and space industries.



1940s



2024



40,000 ACRES

Largest land-owning public port authority in the U.S.



Only deepwater seaport

directly on the U.S. and Mexico border.



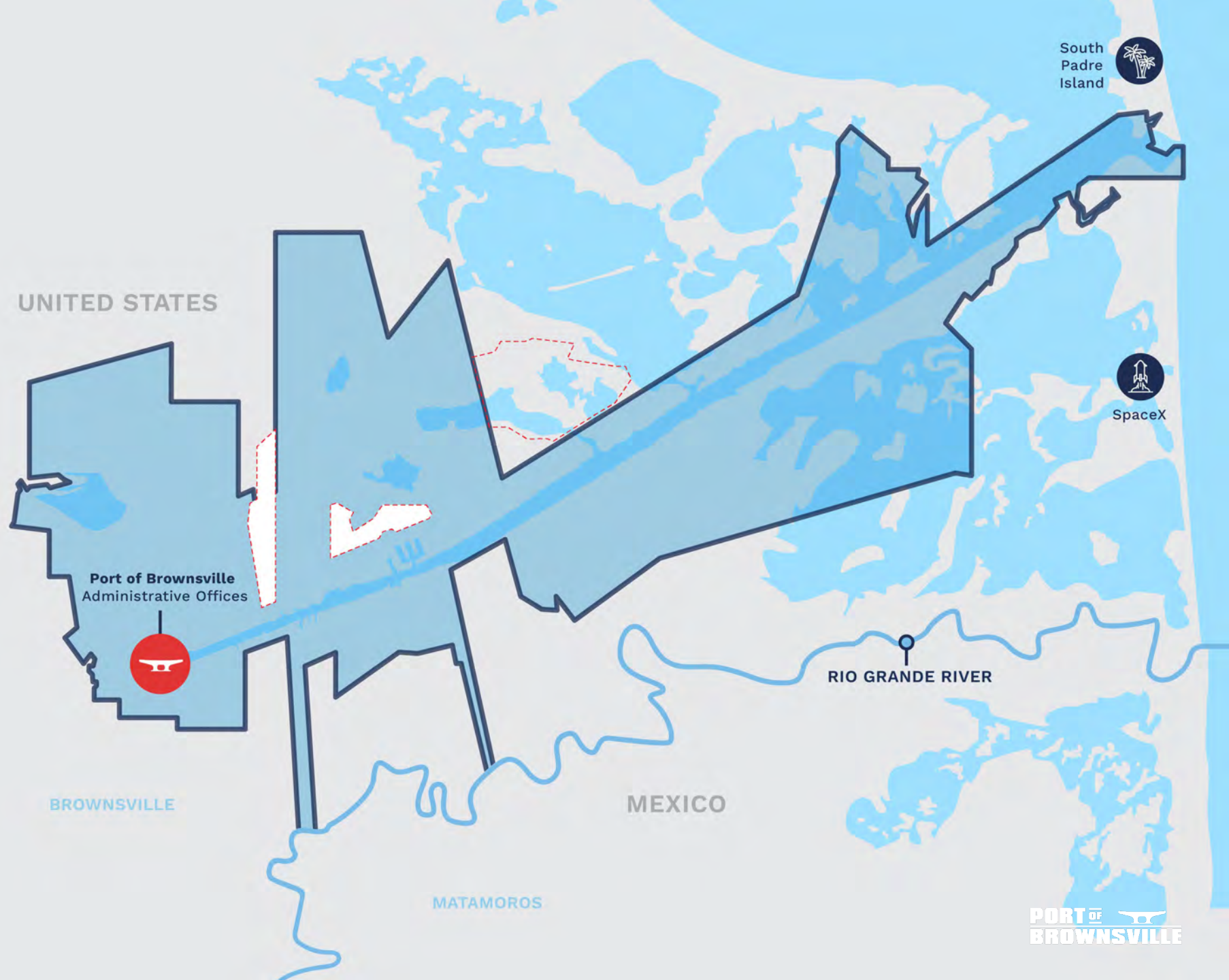
Large and growing
petroleum and break bulk trades.



10,000+ local employees.



Homeport of **SpaceX**.



PORT OF BROWNSVILLE FACILITIES

ACCESS TO NATIONWIDE TRANSPORTATION

INTERSTATES & HIGHWAYS

- I-69E; I-69C; I-2; SH 550 (I-169)

RAIL

- BRG, Union Pacific, BNSF, CPKC

GULF INTRACOASTAL WATERWAY

- Marine Highway Corridors M-10; M-69

PIPELINE CONNECTIVITY TO U.S. & MEXICO

DOCKS

- 13 Cargo Docks
- 6 Liquid Cargo Docks

STORAGE

- More than 1 million sq. ft. covered storage
- More than 3.5 million sq. ft. open storage

WATER DEPTHS

- 44 ft. at entrance
- 42 ft. up to Turning Basin
- 36.5 ft. vessel draft in Turning Basin
- Currently deepening to 52 ft.

GLOBAL CONNECTIVITY



PRIMARY COMMODITIES



Steel

Steel slabs, plates, wire rod, hot and cold rolled steel, beams, pipe, pig iron, ingots and chrome ore.



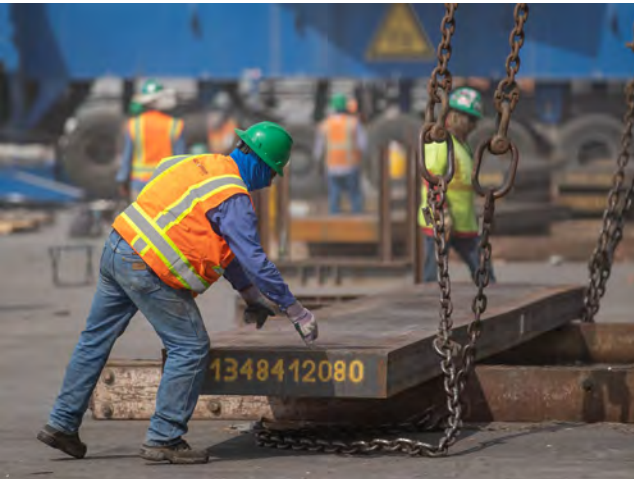
Liquid Cargo

Petroleum, including lubricants, gasoline, jet fuel, diesel, No. 6 oil, naphtha, vacuum gas oils.
Via pipeline: natural gas, gasoline,



Project Cargo

Wind energy components and space industry components.

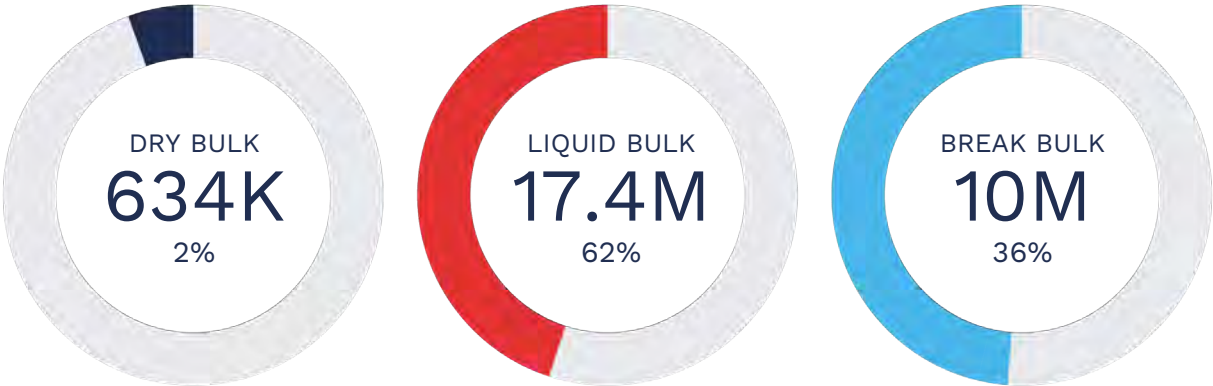


CARGO TONNAGE*

TOTAL FY 2024

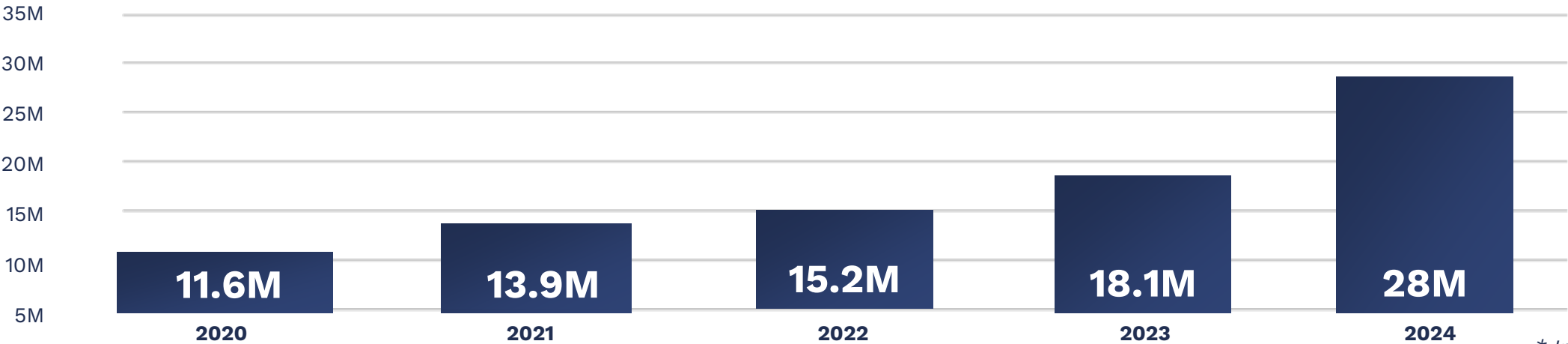
28M

CARGO MOVEMENT 2024**



Waterborne: 11.3 Million | Non-Waterborne: 16.7 Million

CARGO TONNAGE 2020 -2025



* In short tons
** Unaudited

MULTIMODAL LOGISTICS



95,000

**RAILCAR
MOVEMENTS**

FY 2024



450,000

**TRUCK
MOVEMENTS**

FY 2024



2,322

**VESSEL
CALLS**

FY 2024



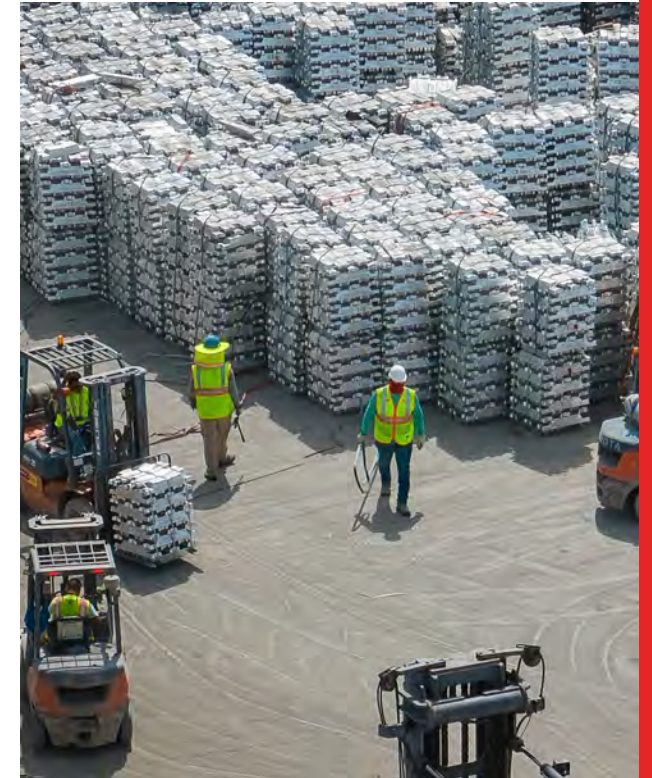
12.1M

**COMMODITIES
VIA PIPELINE**

FY 2024

FOREIGN TRADE ZONE NO. 62

The Port of Brownsville is the grantee and administrator of Foreign Trade Zone No. 62, one of the largest FTZs in Texas. FTZ No. 62 offers sites at the port and throughout Cameron County. Zone status is available to any of the port's properties.



No. 3

Out of 193 FTZs in the nation for the value of exports.



No. 14

Out of 193 FTZs in the nation for the value of imports.



\$7B

In exported goods.



\$3.2B

In imported goods.



\$10.2B

Combined value of commodities moving through FTZ No. 62.

POWERING TEXAS' ECONOMY

\$12B

Total Economic Activity
FY 2023

\$876.7M

Direct Business Revenue
FY 2023

\$10.4B

Statewide Economic Output
FY 2023

**PORT OF
BROWNSVILLE**

*THE ECONOMIC IMPACTS OF THE PORT OF BROWNSVILLE 2023, BY MARTIN & ASSOCIATES

DRIVING ECONOMIC GROWTH THROUGH JOB CREATION

66,212

Jobs in Texas
FY 2023

10,000

Jobs in RGV
FY 2023

\$733M

Local Economic Boost
FY 2023

PORT OF
BROWNSVILLE

*THE ECONOMIC IMPACTS OF THE PORT OF BROWNSVILLE 2023. BY MARTIN & ASSOCIATES

TEXAS MADE BROWNSVILLE BUILT

*The only place in Texas where
the full life cycle of maritime
vessels is witnessed.*

***Driven by the remarkable
skillsets of our local workforce.***



*MV George III departs the Port of Brownsville
en route to Hawaii.*

SHIPBUILDING

Seatrium AmFELS is the only major Jones Act shipbuilding yard in Texas.

Built and delivered two 774-foot-long containerships to Pasha Hawaii.

Building the largest hopper dredge in the U.S.

Building the first Jones Act-compliant offshore wind turbine installation vessel.



USS Kitty Hawk arriving to port May 2022.

SHIP RECYCLING

Capturing over 85 percent of the nation's ship recycling business, where U.S. Navy, MARAD, and commercial ships berth for the last time.

The port has earned the reputation of being the final berthing place for U.S. Navy aircraft carriers and other retired warships. Since 2014, six aircraft carriers have been recycled at the port.

The Port of Brownsville is the first and only site in the U.S. to gain accreditation from the European Union to recycle their ships.

An aerial photograph of a port area. In the foreground, a large red barge is docked, heavily loaded with long, white, cylindrical wind turbine blades. A blue crane is positioned on the barge, and a small tugboat is alongside it. In the background, a large cargo ship is docked at a pier. The sky is overcast, and the water is a dark teal color.

CROSS BORDER TRADE WITH MEXICO

TOP TRADING PARTNER

About 90% of the total commodities arriving at the Port of Brownsville ship to Mexico including steel, petroleum-based products, aggregates, minerals and agriculture products.

PETROLEUM-BASED PRODUCTS

The port is one of the largest exporters of refined petroleum products to Mexico and is currently expanding its liquid storage capacity to meet growing demand.

WIND ENERGY

Among the leading U.S. ports capable of receiving, storing, and moving massive components for the wind energy industry, including the largest windmill blades imported to the U.S. at 267 feet long. These components are transported by truck, rail, barge, and ocean-going vessels.

STEEL PRODUCTS

Among top U.S. steel ports, moving more steel into Mexico than any other domestic competitor – more than 5.5 million tons in 2024. Throughput of steel and other metals will increase to more than 9 million tons by 2026.



CURRENT PROJECTS

CHANNEL DEEPENING

CHANNEL DEEPENING

The Brazos Island Harbor Channel Deepening Project will deepen Brownsville Ship Channel from 42 feet to 52 feet.

PHASE 1 BEGAN 2023

Great Lakes Dredge & Dock Corp. continues work on the Brownsville ship channel for NextDecade's part of the agreement.

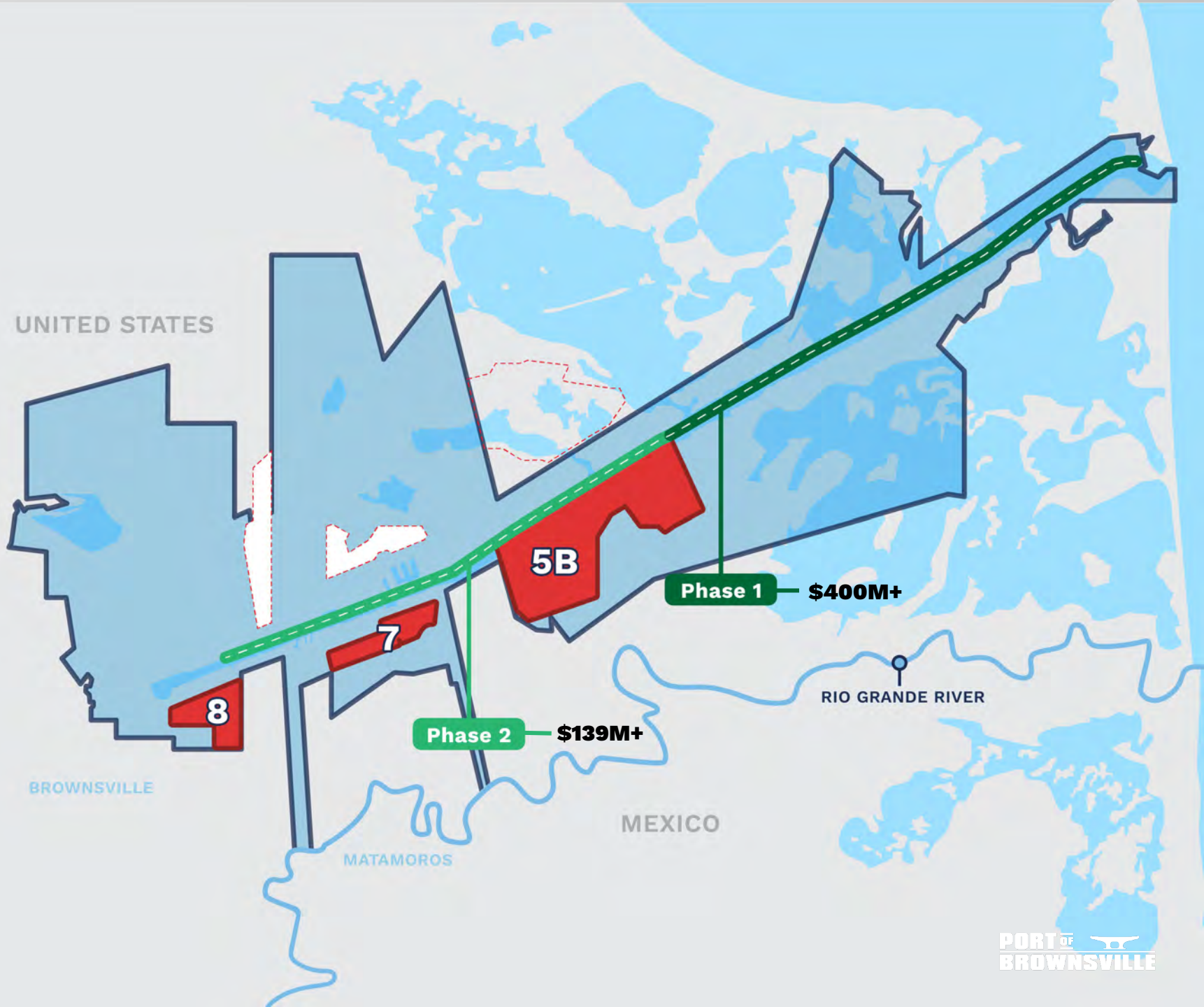
PHASE 2 UNDERWAY

USACE awarded contract to Callan Marine in August 2024. Project to be completed in 2026.

One of USACE's Public Private Partnership (P3) projects.



US Army Corps
of Engineers ®



PORT of
BROWNSVILLE



118-ACRE SHOVEL-READY BUSINESS PARK

This new industrial project leverages the port's logistical advantages to support manufacturing companies and industry clusters.

Only Business Park in the Rio Grande Valley with direct access to barge and ocean-going vessel service.

The development provides a dynamic ecosystem for companies to collaborate, innovate, and flourish.



WESTA INC

Is pioneering food manufacturing with a cutting-edge complex in the Port's Business Park. The state-of-the-art facilities include a high-capacity flour mill and sunflower processing plant.

\$20M

Initial Investment

120+

New Jobs

TERNIUM PESQUERIA OPERATION

Located outside Monterrey, MX. **Company utilizes the Port for receiving, staging, and shipping all the steel slab processed at its state-of-the-art plant.**

Supports automotive, construction and white appliances industries.

Announced a **\$7.2 billion expansion that includes a new marine terminal at the port.**

Steel and other metals' throughput projected to **increase to more than 9 million tons by 2026.**



Operation at Port of Brownsville



FORZA STEEL

Structural steel fabricator manufacturing pipes and tubes, for the automotive, construction, and oil and gas industries.

\$85M

Initial Investment

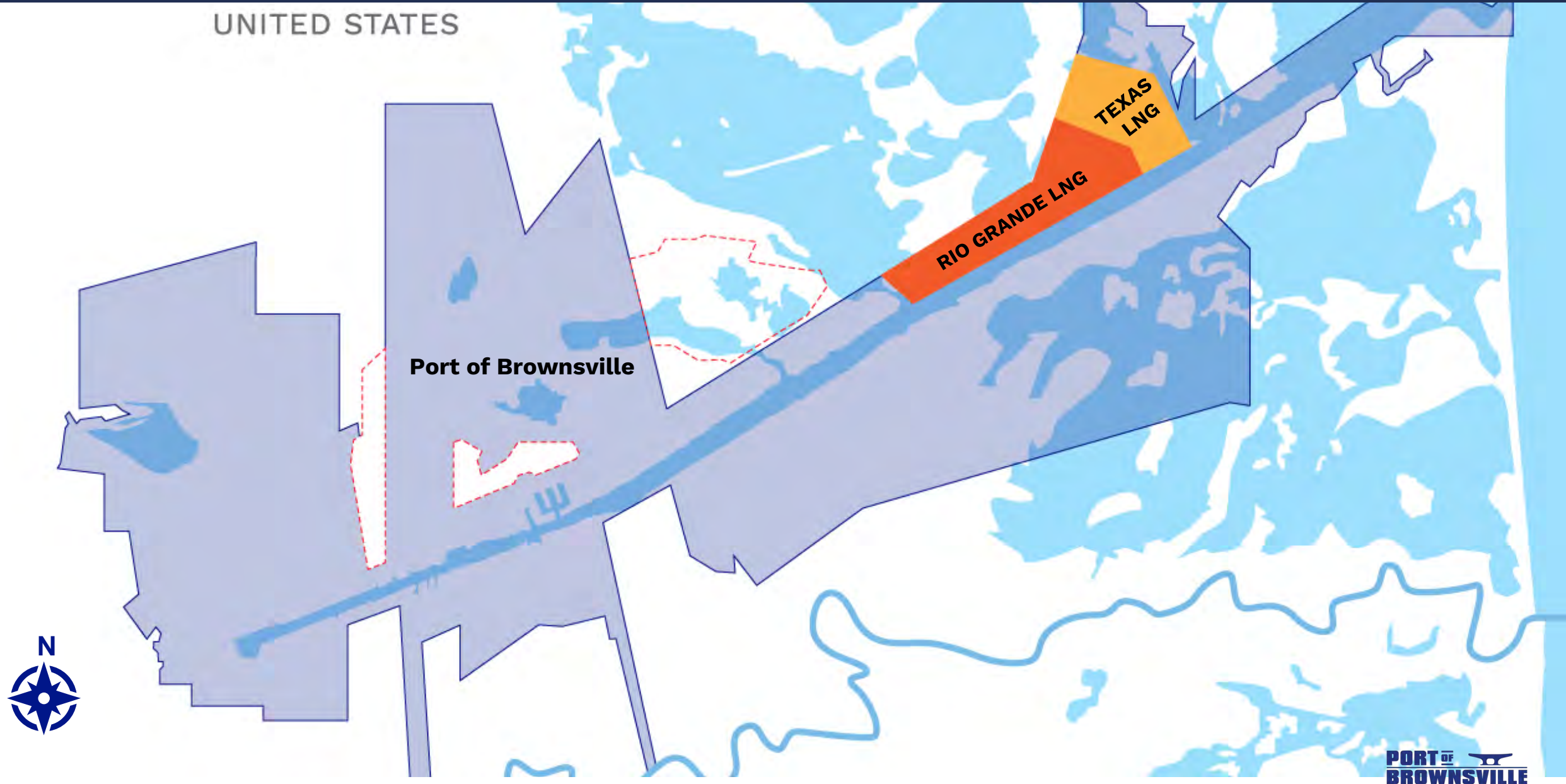
450

Indirect Jobs

150

Direct Jobs

LNG PROJECTS



GLENFARNE ENERGY – TEXAS LNG

Projected to close project financing in 2025. **First LNG exports expected 2027-2028**

CAPITAL INVESTMENT

\$3 BILLION

The facility will be built on a 625-acre site.

Liquefaction capacity of 4 MTPA.

1,200+

Jobs (Construction phase)

100+

Permanent Jobs

Source: TexasLNG



NEXTDECADE – RIO GRANDE LNG

Groundbreaking held Oct. 2023.
At full scale (27 MTPA), Rio Grande LNG **will deliver enough energy to heat and cool the equivalent of nearly 34 million U.S. households annually.**

CAPITAL INVESTMENT
\$18.4 BILLION

Expected EPC cost for Phase 1, which includes 3 trains, 2 storage tanks, and 2 marine berths.

Liquefaction capacity of 17.6 MTPA

5,000+
JOBS

(Construction phase)

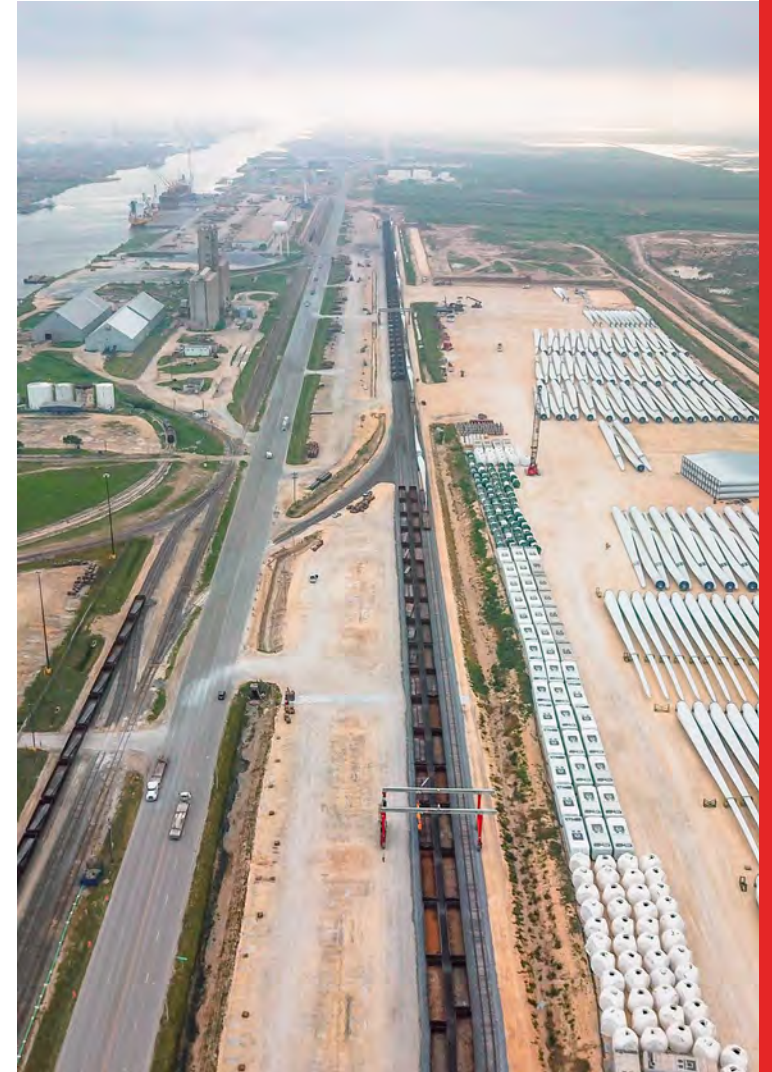
300+
PERMANENT JOBS

Source: NextDecade



RÍÑRÑāæĒŁŲŁŲ

- ✓ ĒĎtĠ3ŃŹĠŲĲ
- ✓ ĒĎtĠ3ŃŹĠŲĲ
- ✓ ĒĎtĠ3ŃŹĠŲĲ
- ✓ ĒĎtĠ3ŃŹĠŲĲ
- ✓ ĒĎtĠ3ŃŹĠŲĲ
- ✓ ĒĎtĠ3ŃŹĠŲĲ
- ✓ ĒĎtĠ3ŃŹĠŲĲ
- ✓ ĒĎtĠ3ŃŹĠŲĲ





Thank You



ŃŸ@Ē@Ÿ: Ụ77 ỠBâi



ŃŸ@ŸÎ Ē@Ÿ: Ụ77 ỠB âB³ Ỡ7



@Ÿ@ŸÎ Ỡ@Ÿ: Ụ77 ỠB ỠŸŮ

