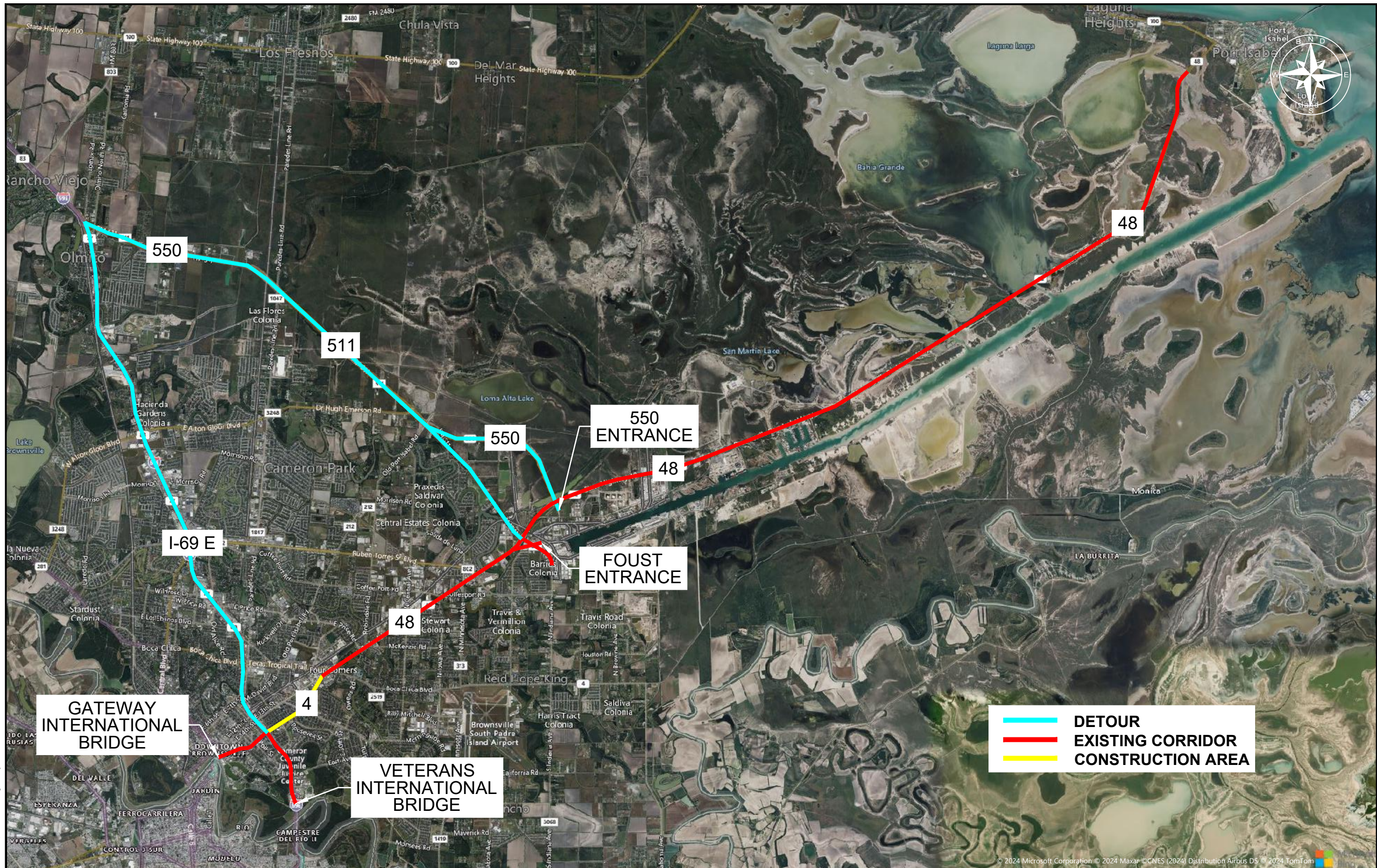


This drawing is being provided to you by the BND for information purposes only, and the BND makes no warranty, express or implied, as to the accuracy, completeness, or reliability of the information shown. The BND shall not be held liable for any and all liability and responsibility for verifying the existence, location, dimensions, proportions, etc. of any boundary lines, easements, rights-of-ways, or any other information therein depicted, and for the accuracy, precision, etc. of the annotations, dimensions and geometry therein shown.



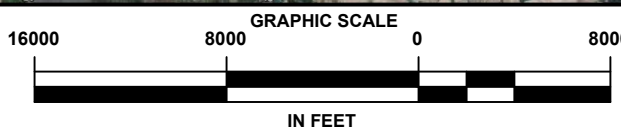
— **DETOUR**
— **EXISTING CORRIDOR**
— **CONSTRUCTION AREA**

GATEWAY INTERNATIONAL BRIDGE

VETERANS INTERNATIONAL BRIDGE

FOUST ENTRANCE

550 ENTRANCE



BROWNSVILLE NAVIGATION DISTRICT
 ENGINEERING DEPARTMENT
 BROWNSVILLE, TEXAS 78521
 PHONE (956) 831-4592 1-800-378-5395
 FAX (956) 831-6153
 EMAIL achavez@portofbrownsville.com

PORT OF BROWNSVILLE
 the port that works

PORT OF BROWNSVILLE
OVERSIZE & OVERWEIGHT CORRIDOR & DETOUR

DRAWN BY: D. ESTRADA	APPROVED BY:
DATE DRAWN: OCTOBER 11, 2024	REVISION DATE:
CHECKED BY:	DWG. NO.:
SCALE: 1:8000	FILE NAME: Z:\David\Free Trade Bridge to POB.dwg