

# 2024 CONCRETE RAILROAD CROSSINGS



## PORT OF BROWNSVILLE BOARD OF COMMISSIONERS

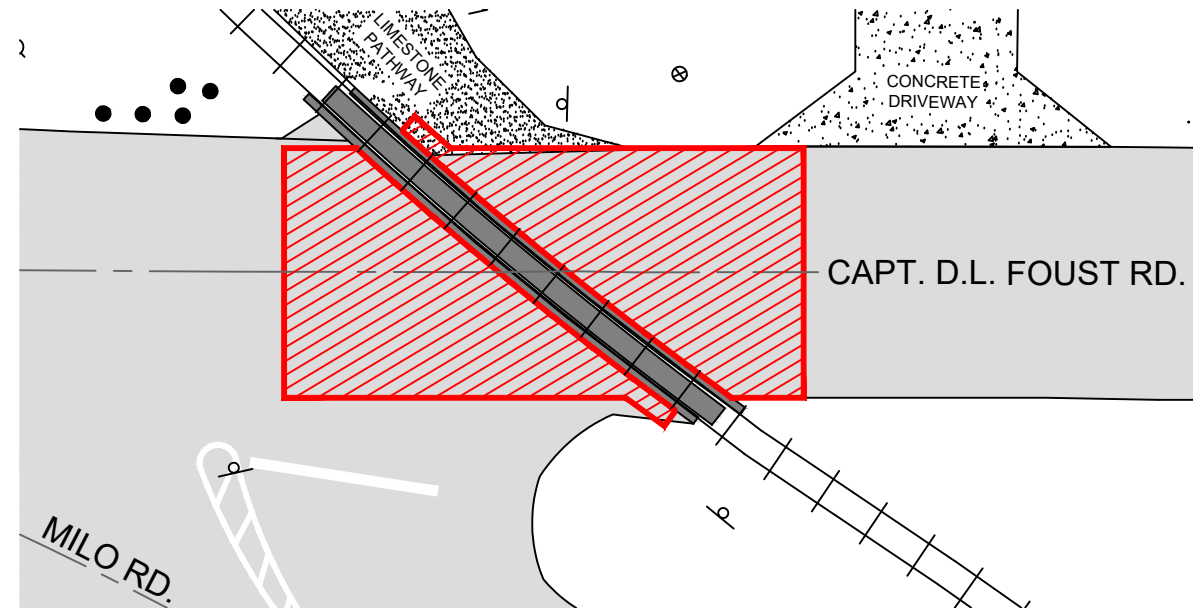
ESTEBAN GUERRA  
RALPH COWEN  
JOHN WOOD  
JOHN REED  
SERGIO "TITO" LOPEZ

CHAIRMAN  
VICE CHAIRMAN  
SECRETARY  
COMMISSIONER  
COMMISSIONER

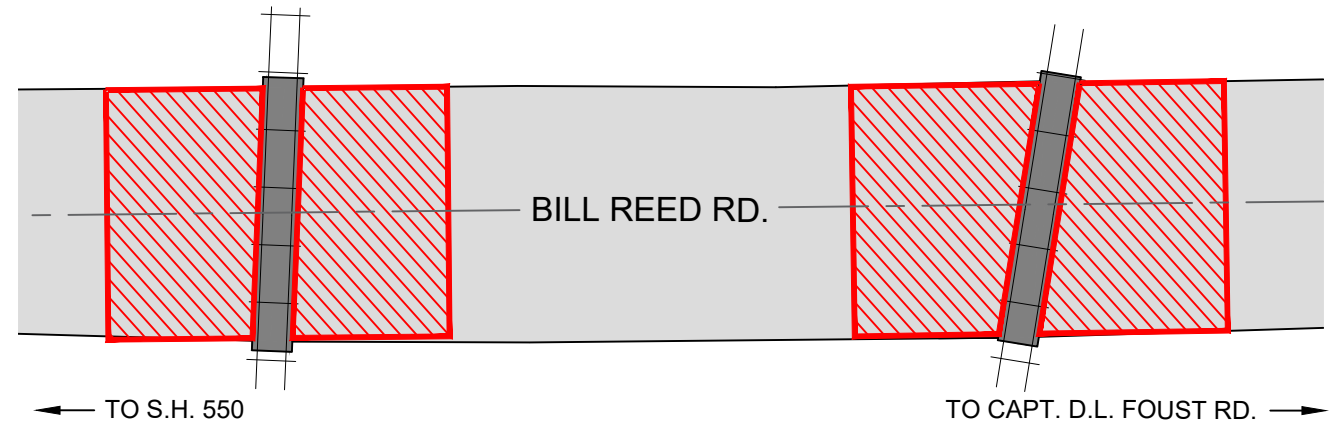
ISSUED FOR BIDS  
MAY 2024

### INDEX OF SHEETS

1	COVER SHEET
2	SITE PLANS
3	CONCRETE PLANS
4	DETAILS & QUANTITY TABLE



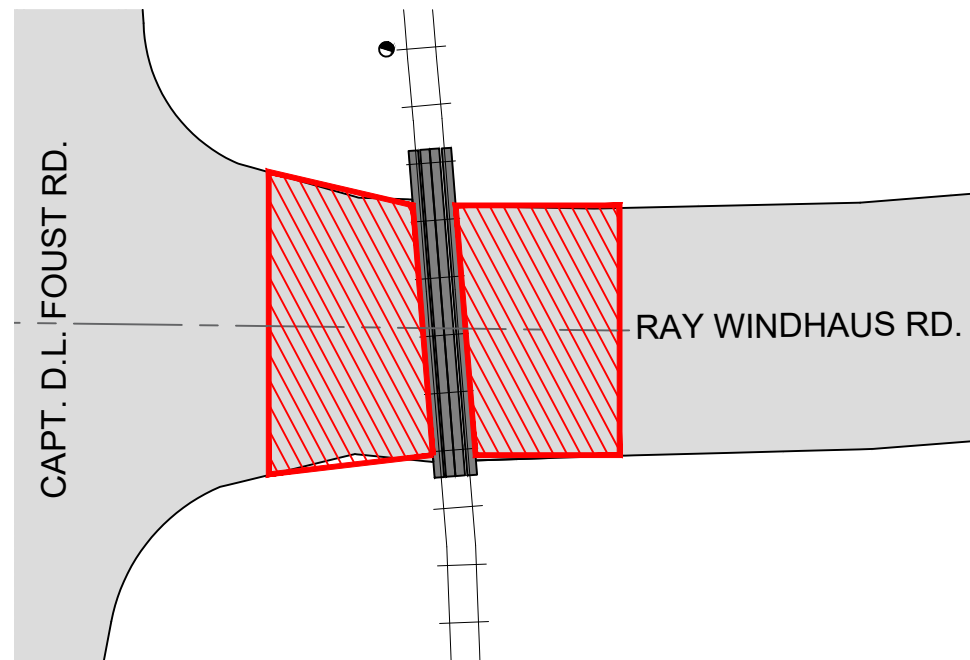
**RAILROAD CROSSING No. 1**  
SITE PLAN  
SCALE: 1" = 40'



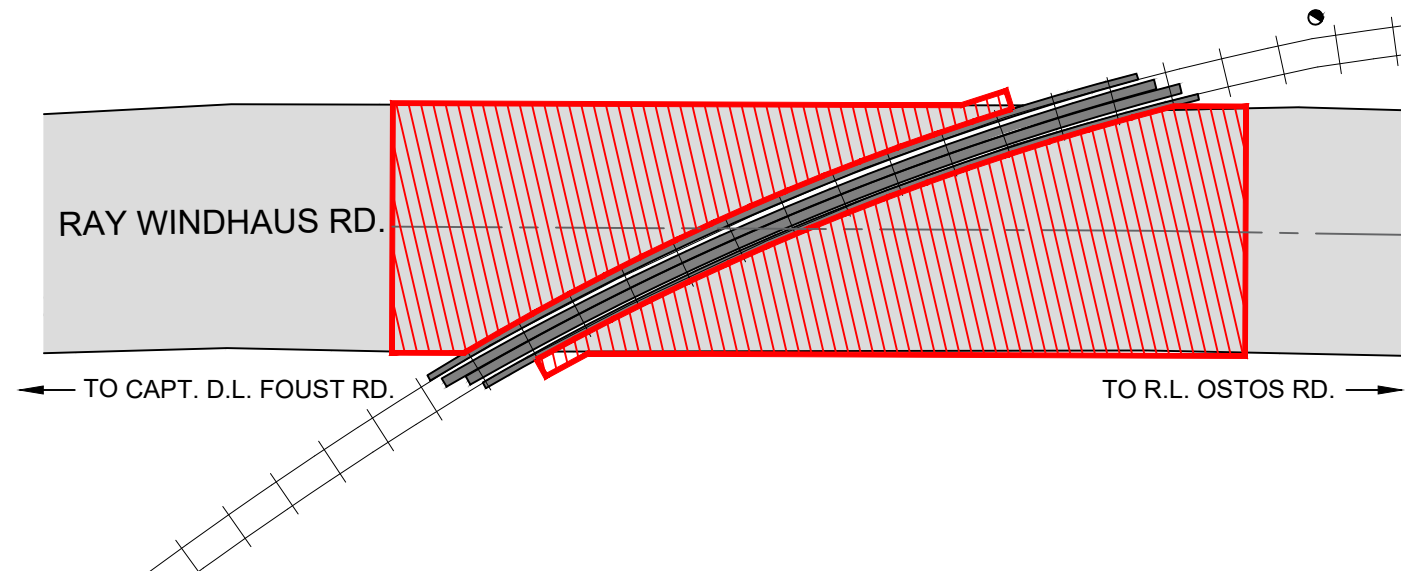
**RAILROAD CROSSING No. 2 & 3**  
SITE PLAN  
SCALE: 1" = 40'

**LEGEND**

PROPOSED CONCRETE

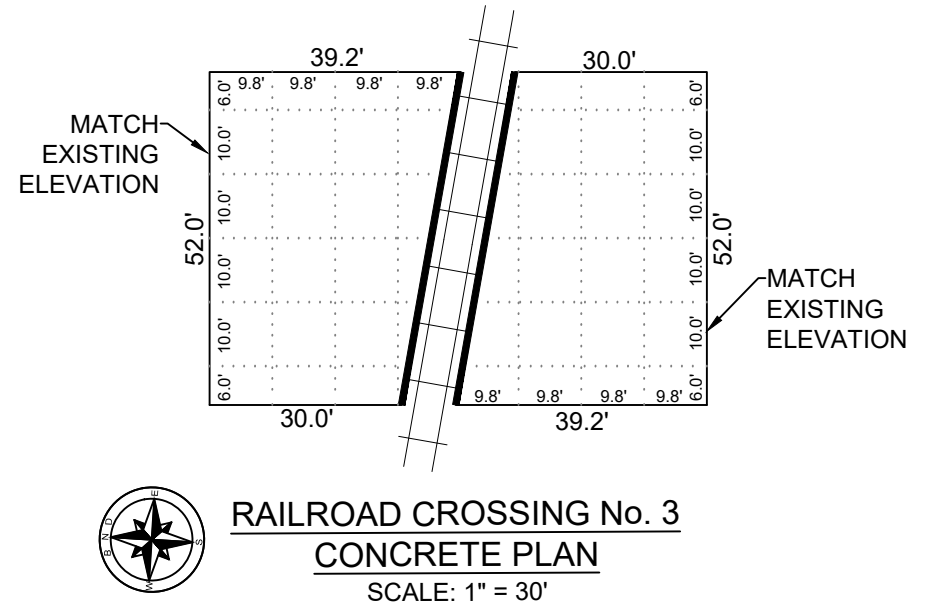
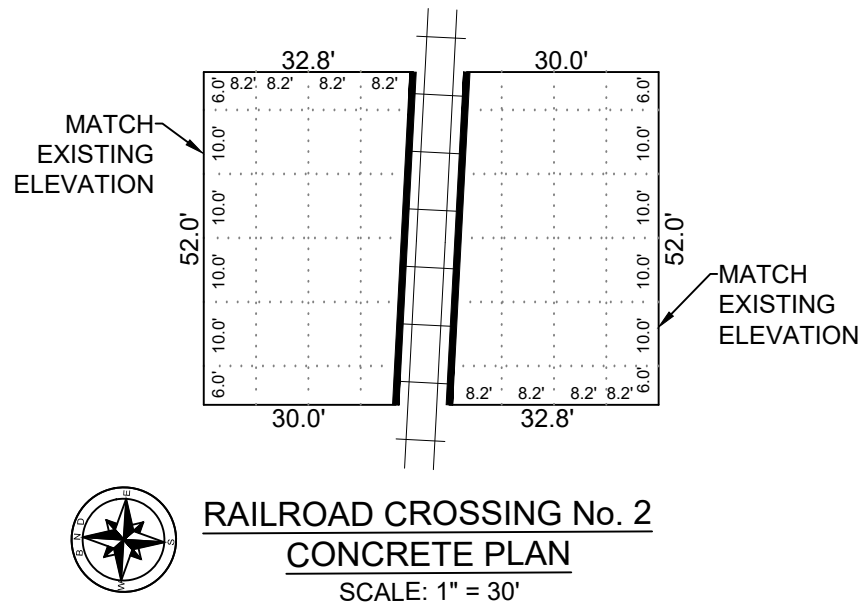
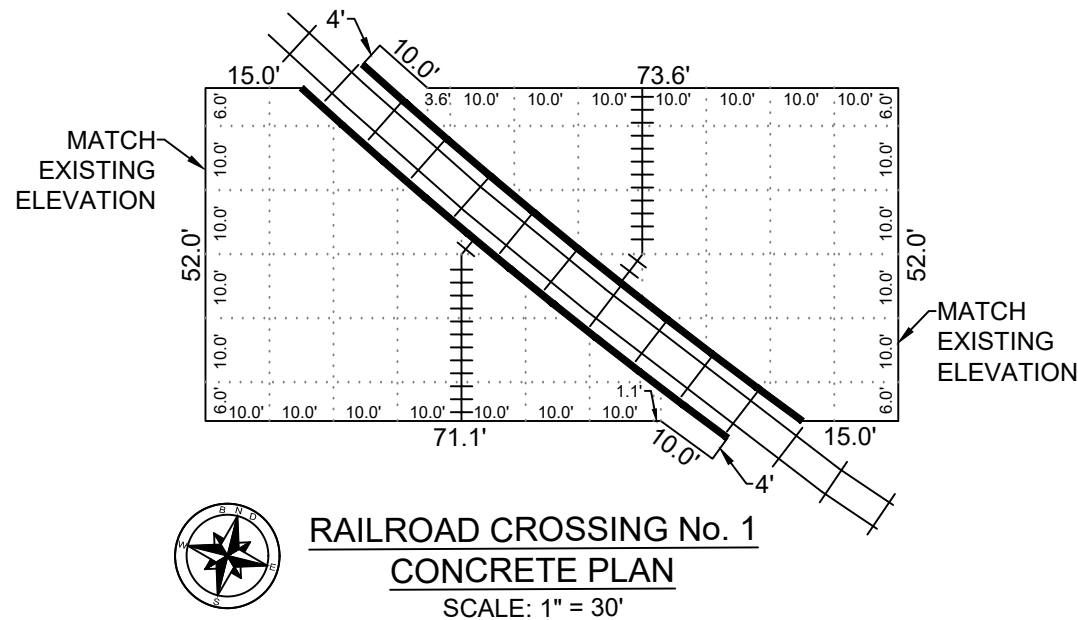


**RAILROAD CROSSING No. 4**  
SITE PLAN  
SCALE: 1" = 40'



**RAILROAD CROSSING No. 5**  
SITE PLAN  
SCALE: 1" = 40'

DRAWN BY:	D. ESTRADA	APPROVED BY:	
DATE DRAWN:	MAY 15, 2024	REVISION DATE:	
CHECKED BY:		DWG. NO.:	
SCALE:	AS SHOWN	FILE NAME:	Z:\damiano\2024 Concrete Rail Road Crossing Approach.dwg

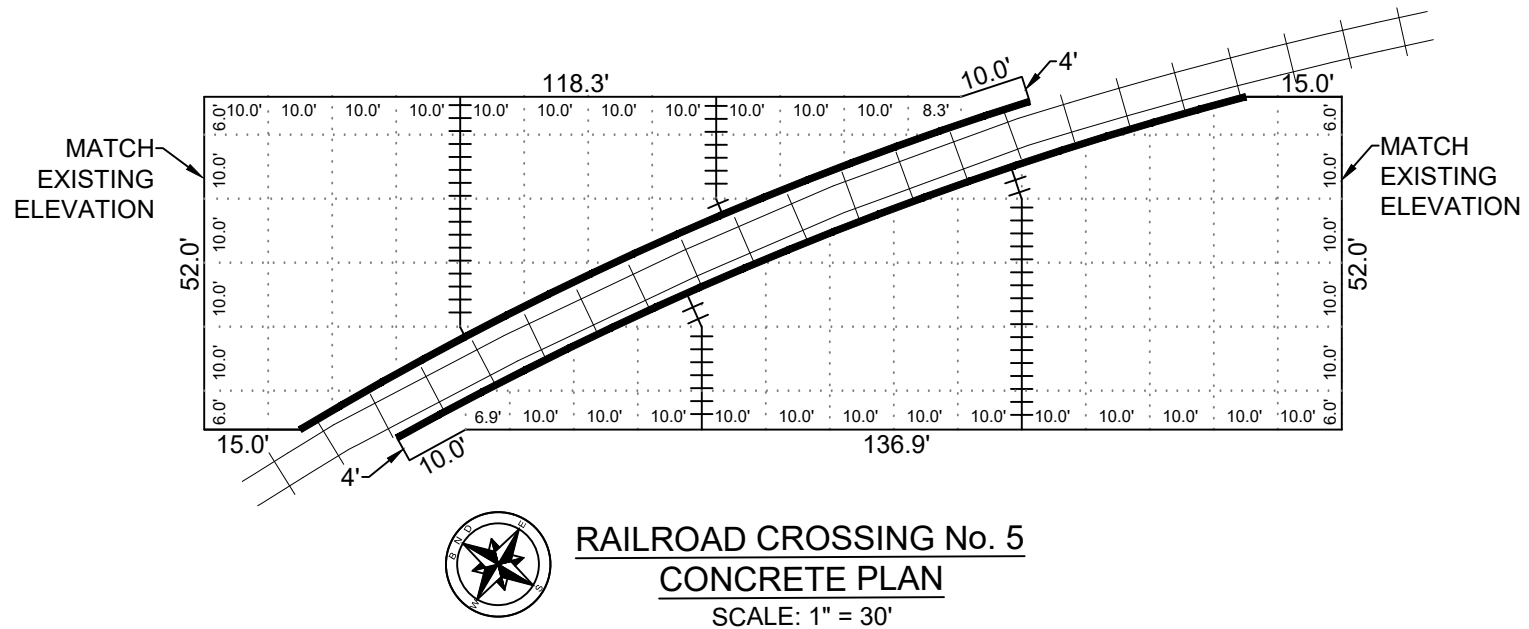
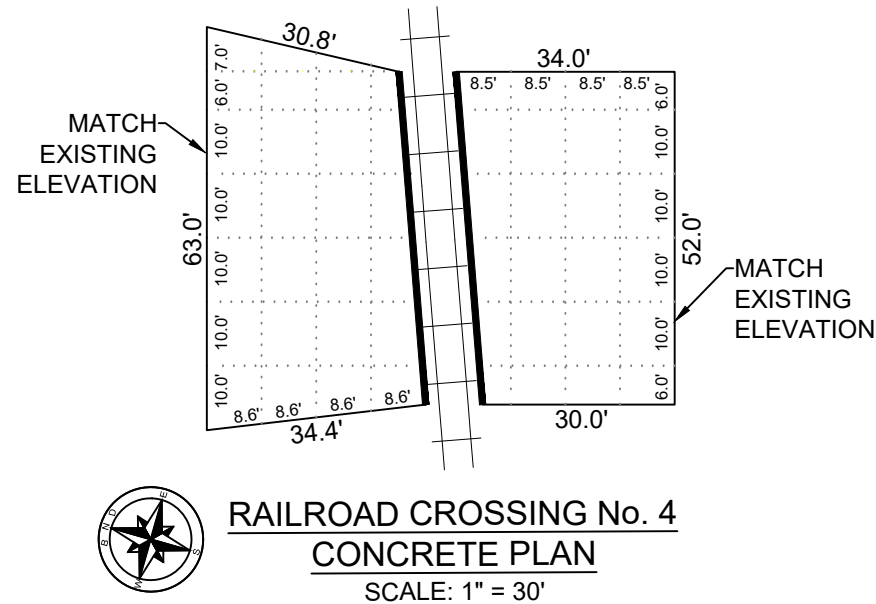


**NOTES:**

1. THE SPACING BETWEEN TRANSVERSE **EXPANSION JOINTS** SHALL BE **60 FT**, RESPECTIVELY, UNLESS OTHERWISE SHOWN IN PLANS.
2. THE SPACING BETWEEN TRANSVERSE **DUMMY JOINTS** SHALL BE **10 FT**, RESPECTIVELY, UNLESS OTHERWISE SHOWN IN PLANS.
3. ISOLATION JOINTS TO BE USED WHERE RAILROAD CROSSING PADS CONNECT TO CONCRETE PAVEMENT.
4. REBAR SHOULD HAVE A MIN. 24" OF OVERLAPPING LENGTH.
5. CONCRETE RAILROAD PANELS TO BE INSTALLED BY OTHERS.
6. CONCRETE TO MATCH RAILROAD PANEL ELEVATION.
7. SEE JOINT DETAILS ON PAGE 3.

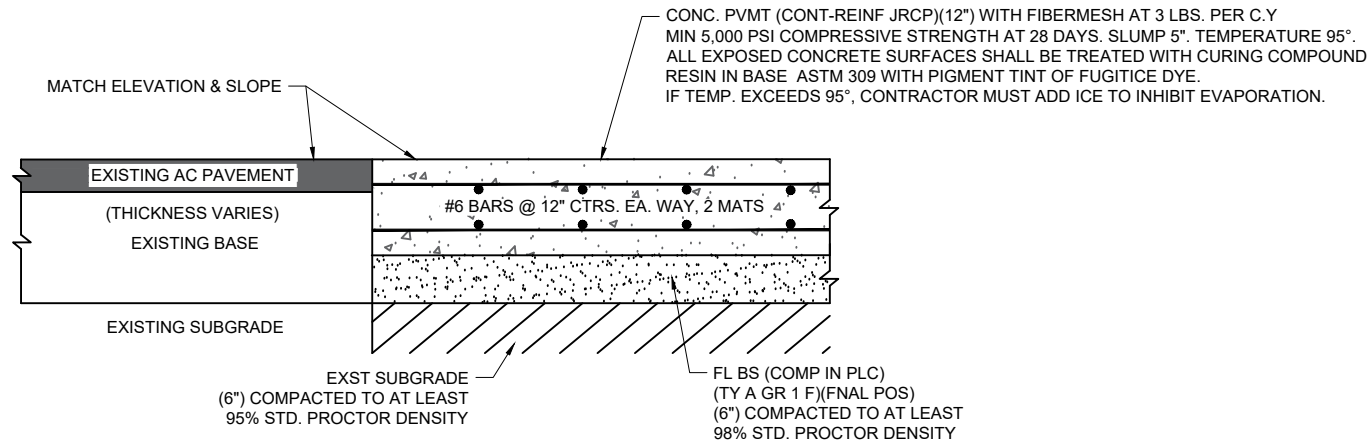
**LEGEND**

- +++++ DOWEL TYPE EXPANSION JOINT
- ..... DUMMY JOINT (SAW-CUT) OR CONSTRUCTION JOINT
- ISOLATION JOINT

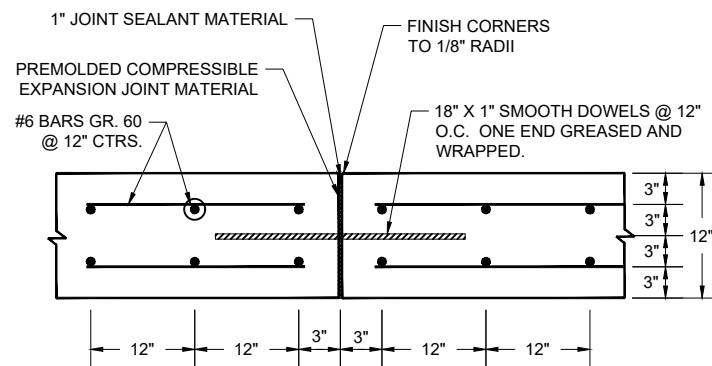


DRAWN BY:	D. ESTRADA	APPROVED BY:	
DATE DRAWN:	MAY 15, 2024	REVISION DATE:	
CHECKED BY:		DWG. NO.:	
SCALE:	AS SHOWN	FILE NAME:	Z:\damiano\2024 Concrete Rail Road Crossing Approach.dwg

QUANTITY TABLE					
	CONCRETE CROSSINGS				
	CROSSING #1	CROSSING #2	CROSSING #3	CROSSING #4	CROSSING #5
TOTAL LIMESTONE (SQ. YD)	584	389	428	418	945
TOTAL CONCRETE (SQ. YD)	549	363	401	391	899



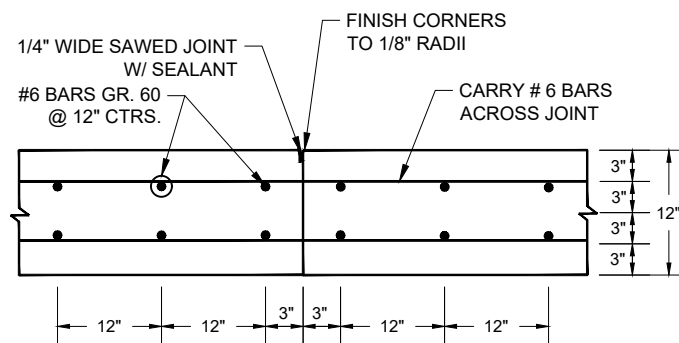
TYPICAL EXISTING AC PAVEMENT / PROPOSED (12")  
CONCRETE PAVEMENT DETAIL  
NOT TO SCALE



DOWEL TYPE EXPANSION JOINT  
NOT TO SCALE

NOTES FOR DOWEL EXPANSION JOINT

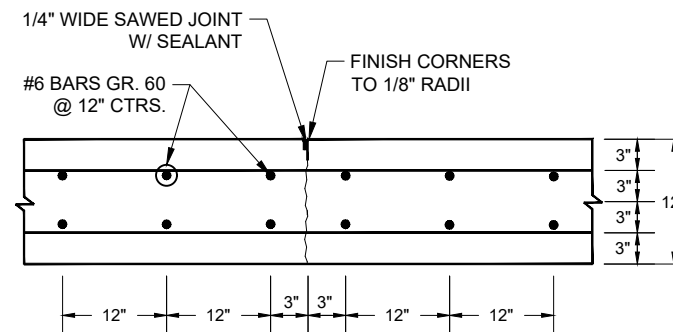
- CENTER DOWEL HORIZONTALLY ON JOINT.
- EXPANSION JOINT BARS SHALL BE HELD PARALLEL TO THE FINISHED CONCRETE SURFACE
- EXPANSION JOINT BARS SHALL BE SPACED AT A MAXIMUM DISTANCE OF 60 FT.



LONGITUDINAL CONSTRUCTION JOINT  
NOT TO SCALE

NOTES FOR CONSTRUCTION JOINT

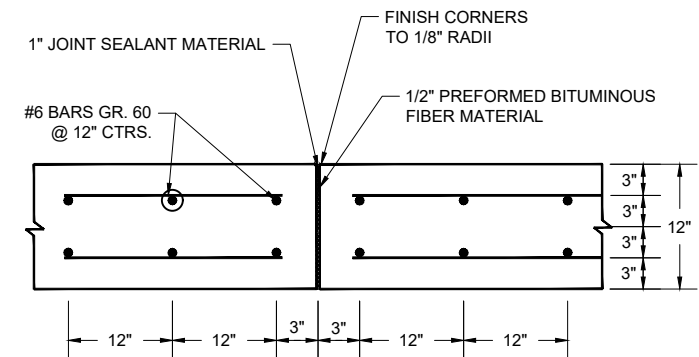
- JOINT SEALANT SHALL FILL THE JOINT FROM BOTTOM TO 1/4" BELOW CONCRETE PAVEMENT.



DUMMY JOINT (SAW-CUT)  
NOT TO SCALE

NOTES FOR DUMMY JOINT

- 10 FT MAXIMUM SPACING BETWEEN TRANSVERSE CONTRACTION JOINTS.
- JOINT SEALANT SHALL FILL THE JOINT FROM BOTTOM TO 1/4" BELOW CONCRETE PAVEMENT.



ISOLATION JOINT  
NOT TO SCALE

NOTES FOR ISOLATION JOINT

- ISOLATION JOINT TO BE USED WHERE RAILROAD CROSSING CONNECTS TO PAVEMENT.