







Reliable, innovative and flexible supply chain solutions adapted to our customers' needs.

**THERE IS NO  
ONE LIKE US.**



An aerial photograph of a train crossing a long, elevated metal bridge over a river. The train consists of several black locomotives and freight cars. The surrounding landscape is green and hilly. The word 'POWERED' is overlaid in large, semi-transparent white letters across the middle of the image. Below it, the text 'BY RAIL & REAL ESTATE' is written in white, bold, sans-serif font.

# POWERED

BY RAIL & REAL ESTATE

Situated on the border of the United States and Mexico, The Brownsville & Rio Grande International Railway, is a masterfully-run railroad located in an area where global manufacturing and distribution converge. BRG connects customers in need of full-service port, rail connectivity, transload solutions, and industrial real estate development services.

For more information call 800-249-OMNI  
or visit [omnitrax.com](http://omnitrax.com)

**OmniTRAX**<sup>®</sup>  
POWERED BY RAIL & REAL ESTATE

**WELCOME TO THE  
PORT OF BROWNSVILLE DIRECTORY**

The Brownsville Navigation District Board of Commissioners and Port of Brownsville staff welcome you to the Port of Brownsville Directory. Our goal is to provide our tenants, business partners, media and community with detailed information about the port’s capabilities, infrastructure, growth and opportunities.

In this issue, readers will find a valuable resource for contacts, interesting articles, compelling photos, and maps – all to better understand the port.

Welcome to the Port of Brownsville – the port that *works!*

**TABLE OF CONTENTS**

Board of Commissioners ..... 6

Chairman’s Letter ..... 7

Port Staff ..... 8

Port Director’s Letter ..... 9

A Central Hub of Commerce and Sustainable Growth ..... 10

On the Horizon ..... 12

Closing Gaps in Cross Border Trade ..... 14

Shipbuilding and Recycling, a Synergy in Motion ..... 16

A Vision Becomes Reality ..... 18

Environmental Stewardship ..... 19

Developing Human Capital ..... 20

Rail Key In Connecting Markets ..... 22

Safety Means Business ..... 23

Fishing Harbor Offers a Taste of the Gulf Coast ..... 24

Respite for Weary Sailors ..... 25

Fast Facts ..... 26

Facility Map

Overall Facilities ..... 36

Business Directory ..... 44

Advertisers’ Directory ..... 63

Alphabetical Listing ..... 65



**DIRECTORY**

PUBLISHED BY:  
**PORT OF BROWNSVILLE**  
1000 Foust Road  
Brownsville, TX 78521  
Tel (956) 831-4592  
Fax (956) 831-5006  
www.portofbrownsville.com

**PORT DIRECTOR & CEO**

Eduardo A. Campirano

**EDITOR**

Jorge I. Montero

**WRITERS**

Jorge I. Montero  
Christina Garza

**PHOTOGRAPHY** (Unless indicated otherwise)

Maria Rentrop  
Mario Gonzalez  
Alex Burrows Photography  
Bryan Richey Photography  
DELACOLINA Films  
Hord Photography

**DESIGN**

Maria Rentrop

**PRINTING**

Creasey Printing Services, Inc.

*Every effort has been made to ensure the accuracy of the information herein. The Port of Brownsville cannot and does not guarantee the accuracy of all information furnished, or the complete absence of errors and omissions; hence no responsibility for the same can be, or is, assumed.*

The Port of Brownsville’s Official Directory is a publication of the Brownsville Navigation District, Brownsville, Texas. Information in this publication, excluding copyrighted photographs and advertisements, may be copied in whole or in part. Credit is requested with the line, “Courtesy of the Port of Brownsville” on all excerpts. Inquiries may be directed to:

**PORT OF BROWNSVILLE**

Communications Department  
1000 Foust Road  
Brownsville, TX 78521  
www.portofbrownsville.com  
© 2023 Brownsville Navigation District

**ON THE COVER:**

The Port of Brownsville is leading the Rio Grande Valley’s economy, enhancing its status as a vital hub for trade and a catalyst for regional advancement. From significant infrastructure upgrades to expanded capabilities and an unwavering focus on sustainability, the port is at the forefront of the maritime industry. It stands as a symbol of progress for the Rio Grande Valley.





## Services

Stevedoring  
Warehousing  
Trucking & Rail  
Ocean freight coordination  
Customs coordination  
Fully integrated logistics  
Vessel agency

## Companies

Schaefer Stevedoring  
Schaefer Logistics  
Schaefer Terminals  
Schaefer BMA Colombia  
Schaefer & Cía Mexico  
IPA Steel Terminal Mexico  
Audaxia Logística Mexico  
Audaxia Transportes Mexico  
Gulf Facilities Warehousing

## United States

Brownsville  
Corpus Christi  
Laredo

## Mexico

Altamira  
Tampico  
Veracruz  
Monterrey  
San Luis Potosí  
Manzanillo  
Mazatlan

## Colombia

Barranquilla  
Cartagena  
Santa Marta  
Buenaventura

## Cargo Types

Steel & Metals  
Bulk & Scrap  
Wind & Energy  
Project  
Containers

## Storage & Facilities

Inside & Outside Storage  
External patios  
Complete surveillance  
Private railspurs  
Public railspurs

## Technology

EDI Capability  
EDIfact  
Shipping software  
Online inventory control  
X12 // Compord  
FTP // ANSI  
XML D

## Schaefer Stevedoring

4201 Don Foust Road  
Brownsville, Texas 78521  
T: +1 956-831-4007  
schaeferstevedoring.com

## Schaefer BMA Colombia

Calle 77B No 59-61, Off: 705  
Centro Empresarial Las  
Americas II  
Barranquilla, Atlantico  
Colombia  
T: +57 5 358 6978  
schaefer-bma.com

## Audaxia Logística

Torre Koi  
David Alfaro Siqueiros 106  
60th Floor, Suite 6003  
Col. Valle Oriente  
Monterrey, NL 68269  
T: +52 818 363 4919  
audaxia.mx



# Valley Grocers, LLC dba *E de la Garza*

- *since 1918* -

*Valley Grocers LLC, with over 100 years of experience, serving independent retailers, convenience stores and food service customers.*

We're now expanding our services to include ship supplies out of the Port of Brownsville. You can count on us for high-quality products, timely deliveries, and competitive prices. We offer a wide range of products to meet your needs including:

> BEVERAGES

> CLEANING SUPPLIES

> DRY GOODS

> CANNED GOODS

> SHELF STABLE MILK

> SNACKS

*And Much More!*



Our team is dedicated to providing you with exceptional service every step of the way. From order placement, to delivery, we'll make sure you have everything you need to keep your ship running smoothly.

Scan and visit  
our website



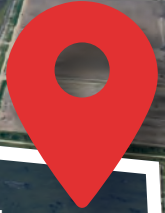
**634 E Fronton St Brownsville TX 78520**  
(956) 542-3576 · valleygrocers.com · info@valleygrocers.com



# Built for Growing Business



SCAN THE CODE TO WATCH VIDEO



**118-ACRE**  
SHOVEL-READY BUSINESS PARK

As the only deep-water seaport directly on the U.S.-Mexico border, the Port of Brownsville is the ideal location for growing your business.

## SUITED FOR MANUFACTURING & LOGISTICS



**18 LOTS AVAILABLE**  
ALL UTILITIES IN PLACE



**FOREIGN-TRADE ZONE #62**  
DESIGNATED SITE



**DIRECT ACCESS TO**  
**USMCA CORRIDOR**



**CONNECTIVITY TO 3**  
**CLASS 1 RAILROADS**



**24/7 SECURED**  
FACILITIES



**DIRECT ACCESS TO**  
**OVERWEIGHT CORRIDOR**



# BROWNSVILLE NAVIGATION DISTRICT BOARD OF COMMISSIONERS



**ESTEBAN GUERRA**

Chairman



**RALPH  
COWEN**

Vice Chairman



**JOHN  
WOOD**

Secretary of the Board



**JOHN  
REED**

Commissioner



**SERGIO TITO  
LOPEZ**

Commissioner

## MISSION STATEMENT

The Port of Brownsville will be a leader in developing economic opportunities, improving the quality of life, creating the best transportation facilities possible, and exhibiting high standards of public administration – all with the goal of making the Brownsville area a great place to live and do business.



# A LETTER FROM THE CHAIRMAN



Dear Friends of the Port,

The Port of Brownsville is leading the charge for economic development in the Rio Grande Valley and Northern Mexico.

With important private and public projects on the horizon, this year, the Port of Brownsville is moving forward with its most ambitious developments yet, thanks in part to the visionary leadership of the Brownsville Navigation District (BND) Board of Commissioners. The BND and I are proud to maintain a strong financial record for transparency and stewardship, allowing us to invest in extending the life of the port. Notably, our operating revenue for 2022 exceeded \$30 million for the third consecutive year, reaching more than \$38 million. This allows us to invest in essential infrastructure that solidifies the port's international standing as an important component in the supply chain logistics.

As port customers and tenants continue to thrive and expand, infrastructure upgrades are more critical than ever. In 2022, the port handled 15.2 million tons of cargo, a figure that is expected to keep climbing in the coming years. Our rail partners at the Brownsville & Rio Grande International Railway, operated by OmniTRAX, finished 2022 strong, moving 72,616 railcars throughout the year. According to current estimates, 2023 will be another record-breaking year for cargo movement by rail thanks to the success of port tenants and customers.

Work on the port's Brazos Island Harbor Channel Improvement Project has begun. The project, a public private partnership that includes the port, NextDecade and the U.S. Army Corps of Engineers, will deepen the ship channel from 42 to 52 feet, resulting in significant navigational safety improvements for commercial shipping in South Texas.

Recently, we celebrated the groundbreaking of a 118-acre business park designed to meet the growing demand for industrial developments in the area. We anticipate that the operations at the business park will contribute to the upward trend of activity, encouraging sustainable growth among our existing industries and at the same time opening the door to new business partners.

Looking ahead, the Port of Brownsville remains dedicated to fostering growth and prosperity. We are steadfast in our pursuit of excellence, aiming to establish even stronger connections with our partners and stakeholders.

Together, we will continue to unlock the immense potential of our port and ensure a bright future for all.

Thank you,

Esteban Guerra  
Chairman  
Brownsville Navigation District

A handwritten signature in blue ink, appearing to read "E Guerra", is positioned below the typed name and title.

# PORT OF BROWNSVILLE LEADERSHIP



**EDUARDO A. CAMPIRANO**  
Port Director & CEO



**ARTURO GOMEZ**  
Deputy Director of Operations



**DR. MELINDA RODRIGUEZ**  
Deputy Port Director of Administration



**ARIEL CHAVEZ III,  
P.E./R.P.L.S.**  
Director of  
Engineering Services



**MICHAEL DAVIS**  
Harbor Master



**WILLIAM G.  
DIETRICH**  
Chief of Police  
& Security



**JOSE A.  
HERRERA JR.**  
Director of Facilities  
Maintenance



**JORGE I. MONTERO**  
Director of  
Communications



**MARGIE S. RECIO**  
Director of Administrative  
Services



**ANTONIO  
RODRIGUEZ, AZS**  
Director of Cargo Services  
& FTZ Administrator



**ZEUS YAÑEZ**  
Director of Finance



**JANIE VELASQUEZ**  
Administration Manager



# A LETTER FROM THE PORT DIRECTOR



Dear Readers,

As the Port Director of the Port of Brownsville, it is my utmost pleasure to update you on one of the most significant announcements in South Texas since the opening of the port in 1936.

In what is guaranteed to have a generational impact, NextDecade Corporation announced in July a positive final investment decision to start construction of its Rio Grande LNG facility at the port. As one of the largest greenfield energy projects financed in U.S. history, Rio Grande LNG will serve as a gateway for natural gas exports, bolstering both the local and national economy.

The Rio Grande LNG project will not only bring substantial economic benefits to our region but also adhere to the highest environmental standards. With a commitment to clean energy, the project will reduce emissions and contribute to a more sustainable future. The Port of Brownsville is a critical asset to the state's energy sector. We are proud to support initiatives that align with our vision for responsible growth and environmental stewardship.

As the leading maritime hub and foremost economic engine for Rio Grande Valley region, the Port of Brownsville continues to make strides earning national prominence for its diverse cargo-handling capabilities.

The U.S. Army Corps of Engineers' most recent annual report ranking 150 maritime ports nationwide shows the port catapulted to 55th position in the country for the movement of waterborne cargo in 2021, a significant leap from 66th place in 2020.

Through strategic planning and innovation, we optimized our logistics and transportation operations, ensuring the smooth flow of goods and facilitating seamless global trade.

Looking ahead, I am optimistic about the future of the Port of Brownsville. Our projections for the coming years are aligned with our commitment to sustained growth and providing unparalleled services to our partners.

The Port of Brownsville continues to attract a diverse range of projects and investments. Our strategic location, extensive infrastructure, and dedicated workforce have made us an ideal choice for businesses looking to expand their operations. We have witnessed notable advancements in industries such as manufacturing, renewable energy, and shipbuilding, further enhancing our position as a leading economic engine in the region.

On behalf of the Port of Brownsville, thank you for your interest and support in the Rio Grande Valley's port for the region.

Respectfully,

Eduardo A. Campirano  
Port Director and CEO  
Port of Brownsville



1000 Foust Road · Brownsville, TX 78521 · (956) 831-4592

# THE PORT OF BROWNSVILLE: A CENTRAL HUB OF COMMERCE AND SUSTAINABLE GROWTH



In the 2021 annual report by the U.S. Army Corps of Engineers, the Port of Brownsville ranks 55th out of 150 maritime ports nationwide for the movement of waterborne cargo.





The Port of Brownsville has been a driving force for the Rio Grande Valley's economy with impacts reaching far across the Lone Star State. In the last decade, the port has made significant strides, bolstering its position as a crucial center for commerce and a catalyst for regional growth. With major infrastructure improvements, increased capabilities, and a strong commitment to sustainability, the Port of Brownsville is leading the way in the maritime industry and a symbol of progress.

Thanks to the port's keen logistical network, the movement of waterborne cargo at the port has continued to rise. According to the U.S. Army Corps of Engineers' the port rocketed to 55th position out of 150 maritime ports nationwide for the movement of waterborne cargo in 2021, ahead of its 66th place in 2020.

The upward trend continues as more than 15.2 million tons of diverse cargo moved through the port in 2022, supporting various industries with efficient and reliable logistical services. This represents a 10.2 percent increase from the 13.8 million tons of cargo recorded in 2021, a new record for the Port of Brownsville. These growing numbers are reflected in the operating revenues as well. Notably, operating revenues for 2022 reached more than \$38 million, surpassing the \$30 million mark for the third consecutive year.

This prudent financial stewardship is the result of the thoughtful and strategic planning set by the Brownsville Navigation District (BND) Board of Commissioners to protect the interests of port tenants and users, constituents, and port assets. The five-member elected commission is chartered by the State of Texas and charged with setting port policy and approving major expenditures. BND Commission members are elected to four-year staggered terms and meet twice monthly, governing the activities of the port.

The BND Commission is comprised of Chairman Esteban Guerra, Vice Chairman Ralph Cowen, Secretary John Wood and Assistant Secretaries John Reed and Sergio Tito Lopez. Management of the port day-to-day activities is accomplished by Port Director and CEO Eduardo A. Campirano.



The Port of Brownsville's 118-acre shovel-ready business park will support manufacturing companies with efficient multimodal transportation and robust storage capabilities.

Robust revenues and sound fiscal stewardship have allowed the BND to invest in the port's projected growth. In June, the port celebrated the groundbreaking of a 118-acre shovel-ready business park that caters to the growing demand for industrial developments in South Texas. The park will complement the port's current efforts to create a diverse business hub, providing vital connections for companies to enhance market reach, supply chain efficiency, and build sustainable, resilient operations. The industrial park, suited for manufacturing and logistics operations, will be completed in Summer 2024.

The Port of Brownsville's Foreign Trade Zone No. 62 remains a leader in exports, ranking second in the nation with exported goods valued at over \$8.2 billion in 2022, according to the 84th Annual Report of the Foreign Trade Zones Board to the Congress of the United States. This marks a significant improvement from the previous year's figure of \$6.9 billion. The Port of Brownsville's FTZ has consistently placed in the top three for exports out of 193 FTZs nationwide since 2012. Furthermore, FTZ No. 62 is ranked 20th in the United States for the value of imports, amounting to \$5.7 billion.

## ON THE HORIZON



The Port of Brownsville continues to solidify its role as a critical asset and a key component of the Texas' energy sector. In July, NextDecade Corporation announced it had received a positive final investment decision to move forward with the construction of its Rio Grande LNG plant, a major liquefied natural gas export facility in the United States. The project aligns with the port's objective to drive economic growth, and the benefits are expected to extend to the region, state, and country. Over 5,000 jobs are projected to be created in the area during Phase 1 of the construction of the facility, and this project is estimated to generate an increase in gross domestic product of \$6 billion in Cameron County, \$23 billion in Texas, and up to \$35 billion in the United States.



Once fully operational, the Rio Grande LNG terminal will consist of five trains with the capacity to export 27 million tonnes per annum (MTPA). Phase 1, with nameplate liquefaction capacity of 17.6 MTPA, has already acquired 16.2 MTPA of long-term binding LNG sale and purchase agreements with TotalEnergies, Shell NA LNG LLC, ENN LNG Pte Ltd, Engie S.A., ExxonMobil LNG Asia Pacific, Guangdong Energy Group, China Gas Hongda Energy Trading Co., Galp Trading S.A. and Itochu Corporation. The total project's financing for Phase 1 is \$18.4 billion.



Infrastructure improvements at the port continue with the Brazos Island Harbor (BIH) Channel Improvement Project, which will deepen the 17-mile-long ship channel from 42 to 52 feet. A deeper ship channel will increase the navigability, facilitating the safe passage of ships and reducing transit times. These infrastructure upgrades will significantly boost the port's competitiveness and attract increased investments.

The BIH project, comprised of two phases, is funded through the U.S. Army Corps of Engineers' (USACE) Public-Private Partnership (P3) with the Port of Brownsville and NextDecade.

In 2019, NextDecade announced a landmark agreement with the Brownsville Navigation District to pay 100 percent of Phase 1 of the deepening project from the western boundary of its lease site along the ship channel to the entrance of the channel, as well as the development of two ship berths and a turning basin for the Rio Grande LNG facility. The Port of Brownsville and the USACE will execute Phase 2, which will deepen the channel from the turning basin area to Rio Grande LNG's site. In March 2022, the federal government announced the allocation of \$68 million for Phase 2, provided under the Infrastructure Investment and Jobs Act Appropriations Law. Phase 2 of the project commenced in February.



During the first quarter of 2023, five vessels exported wind project cargo to South America, moving more than 80 windmill blades manufactured locally by TPI Composites at its facility in Matamoros, Mexico. The blades were then transported to the port by truck via the Free Trade International Bridge at Los Indios and securely loaded on to vessels destined for Brazil, Chile, Colombia and Peru.

As the largest land-owning port in the U.S., the Port of Brownsville tops the nation for its capability of receiving, storing and moving wind energy cargo, including the largest windmill blades imported to the U.S. The port's specialized equipment and skilled workforce handle windmill components for transport with ease.

Adapting to changing market dynamics, the Port of Brownsville plays a pivotal role in driving economic growth, creating employment opportunities, and strengthening its position as a critical trade gateway for the United States.

# CLOSING GAPS IN CROSS BORDER TRADE

As the only deepwater seaport located directly on the U.S.-Mexico border. The Port of Brownsville is strategically positioned to efficiently serve and connect industries across North America and beyond.

The port is a prominent shipper of steel, refined petroleum products, grain, aggregates, among other products supporting diverse industries located in 12 Mexican states.

The movement of cargo across the border in both directions is made easy thanks to the port's direct connectivity to USMCA interstate corridors, offering a fast route to non-congested international bridge crossings. The Port of Brownsville claims conceptual ownership of Texas' first overweight corridor. Trucks crossing the border in either direction utilizing the specially designated route to or from the port, can load to the legal weight limits of Mexico – 125,000 pounds (45,000 pounds heavier than domestic limits). That translates into real savings in both time, money, and logistical efficiencies.

Convenient and efficient commercial border crossings are located just seven miles from the port by truck or about 13 miles by railroad at the West Rail Bridge. Class 1 rail service to and from the port to Mexico and all of North America includes Canadian Pacific Kansas City de México for operations south of the border, and with Union Pacific and BNSF Railway serving northern routes. On-port rail service is provided by agreement with OmniTRAX, operating the Brownsville Rio Grande International Railway on more than 45 miles of port-owned railroad.

The port's strategic location makes it an attractive place for manufacturing centers in Northeastern Mexico, primarily in the Monterrey, Mexico, area. This logistical advantage has catapulted the Port of Brownsville as the major gateway for steel into Mexico, moving a record



4.6 million tons of steel commodities in 2022.

Steel exports to Mexico are projected to increase to 5.5 million tons in 2023, thanks to the development and expansion of Ternium's industrial Center located in Pesquería, right outside the Monterrey metropolitan area. The company is utilizing the Port of Brownsville for receiving, staging, and shipping all the steel slab processed at its plant, one of the most modern industrial complexes in the world that supports the automotive, construction and white appliances industries in Mexico.

The port worked together with Ternium, port stevedore Gulf Stream Marine, the Brownsville Rio Grande International Railway (BRG), OmniTRAX, and CPKC, on a major patio and transloading development at the port to maximize the efficient loading of open-top gondola railcars and expedite steel slab shipments to feed Ternium's mill in Pesquería.





In June 2023, Ternium announced it will invest \$3.2 billion to build a new steelworks and cold-rolling facility at the company’s existing site in Pesquería. With multiple steel furnaces, the new facility will greatly augment Ternium’s production capacity, enabling it to capitalize on strong international demand. This project includes the construction of a marine terminal at the Port of Brownsville that will support Ternium’s state-of-the-art facility in Mexico.

The Port of Brownsville’s prominence in the steel industry continues to grow with Forza Steel’s investment of more than \$60 million to construct a 650,000-square-foot manufacturing facility at the port. The Mexican company, based out of Salinas Victoria, Mexico, specializes in the manufacturing of carbon steel pipes and tubes for the automotive, construction, and oil and gas industries. The company selected the Port of Brownsville to enhance its operations by getting

closer to their customer base and close gaps in the supply chain.

The port is also a major transshipment center for liquid products like premium gasoline, diesel, jet fuels and lubricants, before being transported to final destinations in South Texas and Mexico. Demand for refined products continues to steadily grow and the port’s capabilities to manage large volumes gives customers the reach into the interior of Mexico – a significant advantage in the competitive market.

In 2022, more than 2.5 million tons of liquid commodities were exported via pipeline from the port’s terminals to Mexico. Refined petroleum storage tank farms continue in expansion mode at the Port of Brownsville, with combined estimates placing storage tank capacity at 8 million barrels, and there’s more under construction.

# SHIPBUILDING AND RECYCLING, A SYNERGY IN MOTION

The Port of Brownsville is the only place in the State of Texas where the full life cycle of maritime vessels is witnessed, highlighting the remarkable skillsets the local industrial workforce provides to two specialized maritime industries – shipbuilding and ship recycling.

Seatrium AmFELS, the port's largest employer and the foremost U.S. offshore rig builder, has solidified itself as an important ship builder for the Jones Act market. In July 2023, the company, a member of the Seatrium Group, announced the delivery of the *MV Janet Marie*, the second of two new 'Ohana Class, 774-foot liquefied natural gas-powered container ships built at AmFELS. The new vessel joins Pasha Hawaii's fleet serving the Hawaii/Mainland trade lane, as well as the company's first 'Ohana Class vessel, *MV George III*, also built by the company, which began service on August 17, 2022.

The twin vessels carry up to 5,000 TEUs each and utilize Seatrium AmFELS' proprietary LNG propulsion technology, resulting in reduced air emissions and better fuel efficiency. These new Jones Act vessels surpass the International Maritime Organization (IMO) 2030 emission standards for ocean vessels representing the most technologically advanced and environmentally friendly vessels to serve Hawaii. Energy efficiencies are also achieved with a state-of-the-art engine, an optimized hull form, and an underwater propulsion system with a high-efficiency rudder and propeller.

Seatrium AmFELS is currently working on two major projects. One is the construction of the first Jones Act compliant offshore wind turbine installation vessel that will support U.S. offshore wind projects along the Atlantic Coast. At 472 feet-long, a width of 184 feet and a depth of 38 feet, the *Charybdis* – property of Dominion Energy – will be one of the biggest vessels of its kind in the world. The company's second project is the construction of the *Frederick Paup*, the largest high-specification Trailing Suction Hopper Dredge in

the U.S., being built for Manson Construction Co. This will be the first dredge built at Seatrium AmFELS' yard, adding to the growing number of shipbuilding projects and job opportunities in the South Texas region.

The Port of Brownsville is known as the premier ship recycling port in the nation, thanks to the success of its three major ship recycling facilities, All Star Metals, International Shipbreaking Ltd. (ISL), and SA Recycling/SteelCoast.

These companies capture over 85 percent of the nation's ship recycling business, where U.S. Navy, MARAD and commercial ships berth for the last time. Each of these experienced and safety-driven recycling companies continue to win a steady stream of major recycling contracts from both the U.S. Government and private owners.

Exemplifying the synergy and work of these two legacy



In June, the Brownsville ship channel played host to a fascinating juxtaposition of two containerships. One recently built and the other arriving for recycling. Pasha Hawaii's new *MV Janet Marie* docked at Seatrium AmFELS' shipyard, while Signet Maritime's tugboats towed Pasha's retired *SV Horizon Pacific* to berth at SA Recycling/SteelCoast.



industries at the Port of Brownsville, on June 2023 SA Recycling/SteelCoast, announced the arrival of container vessel *Horizon Pacific* for recycling. The aging vessel, built in 1979, was replaced by the *M/V George III* in Pasha Hawaii's fleet. The *Horizon Pacific* arrived at SteelCoast's yard after a six-week voyage from the West Coast and is currently one of the company's major projects.

The Port of Brownsville has also earned the respected reputation of being the final berthing place for U.S. Navy aircraft carriers and other retired war ships. On May 2022, the *USS Kitty Hawk* became the sixth U.S. Navy aircraft carrier to arrive at the port for recycling. ISL won the Navy contract and responsibility to recycle the 60,000-ton ship, representing the fourth carrier it recycles. The *Kitty Hawk* joins an exclusive and growing family of aircraft carriers – *USS Forrestal* and *USS Saratoga* in 2014; *USS Constellation* and *USS Ranger* in 2015; *USS Independence* in 2017 – that have made

their final voyage and rest in peace at the Port of Brownsville. Another Navy aircraft carrier, the *USS John F. Kennedy*, is expected to arrive by Christmas to ISL's shipyard. The recycling process of the esteemed vessels includes safety and environmental assessment, cleaning/remediation, waste disposal, structural dismantling, demilitarization, and metal processing, separation, and sale.

On June 30, 2023, the U.S. Navy announced the Port of Brownsville as one of three potential locations evaluated in a Final Environmental Impact Statement where the *USS Enterprise* might be sent for recycling. The ship, the world's first nuclear-powered aircraft carrier, was decommissioned in 2017 and the U.S. Navy is currently evaluating where the final berthing place for the ship will be.

ISL is the first and only site in the country to gain accreditation from the European Union to recycle their ships. In 2021, ISL, part of the world-leading recycler EMR Metal Recycling, gained EU Ship Recycling Regulation accreditation for its shipyard after investing \$30 million in compliant infrastructure. And on April 25, 2022, the company announced the completion of the first EU ship recycled in the United States, the *MT Wolverine*. Using innovative and sustainable recycling processes, ISL was able to recycle 97 percent of the materials removed from the 158-meter-long chemical tanker.

The benefits of ship recycling make a significant environmental impact as fewer resources are required to manufacture products from metal scrap as compared to metal ore. Additionally, recycling steel scrap from end-of-life ships reduces air and water pollution and water consumption. This thriving industry supports hundreds of well-paying jobs throughout the Rio Grande Valley, and the employment opportunities continue to grow with each project arriving at the port.





The establishment of the Port of Brownsville in 1936 signaled a new era for the Rio Grande Valley, connecting the economy of South Texas and Northern Mexico with global markets.

## A VISION BECOMES REALITY

The Port of Brownsville first opened for business on May 16, 1936, during the height of the Great Depression with the support of the federal government to the fanfare and excitement of cities across South Texas thanks to the vision of Commodore Louis Cobolini.

Cobolini imagined a deepwater seaport would bring significant economic impact to a predominantly agricultural region. He foresaw ocean shipping as vital to the future of the Rio Grande Valley, leading the efforts to establish the first and only deepwater seaport located along the U.S.-Mexico border.

The Port of Brownsville has since created a legacy that has attracted entrepreneurs and businesses for 87 years. Originally focusing on agricultural products, the port shipped locally grown citrus fruits and cotton to overseas markets gaining national recognition as the leading cotton port in the nation.

In the last decade, the Port of Brownsville has undergone significant modernization and diversification efforts. The construction of new terminals, expansion of storage facilities, and improvements in infrastructure have enhanced the port's capabilities to serve diverse industries from steel and energy to space. These developments have solidified the port's position as a vital economic engine for the region and an asset to the state's economy.

The Port of Brownsville's journey of progress includes adapting to meet the changing needs of global trade. Through environmental stewardship and collaborative partnerships, it has established itself as a leading maritime hub with a positive impact on the local economy and the community supporting more than 51,000 jobs in Texas and bringing \$3 billion to the state's economy. Today the port is among the premier shipbuilders for the Jones Act market and a global ship recycling center, providing a solid base for well-paying industrial jobs.

In the works, the port's Brazos Island Harbor Channel Improvement Project to deepen the channel from 42 to 52 feet is among the latest infrastructure improvements sure to transform the economic landscape of the region for the better.

Consistently ranked among the nation's top foreign trade zones, the port connects industries in North America with international markets. The port's Foreign Trade Zone No. 62 ranks second in the U.S. in 2022, with \$8.2 billion in exported goods, up from \$6.9 billion in 2021. The total worth of imported and exported goods transported through FTZ No. 62 in 2022 exceeded \$13 billion.



# ENVIRONMENTAL STEWARDSHIP



While the Port of Brownsville has long been recognized as a vital hub for trade and commerce, it has prioritized sustainability and marine conservation through environmental stewardship collaborations.

The Brownsville Navigation District Board of Commissioners have regularly demonstrated a commitment to ecological conservation, most recently via a resolution passed March 15, 2023.

The resolution highlights several efforts including the Bahia Grande Restoration Project, the Endangered Cat Corridor Project, the Peregrine Fund Project for the Protection of the Aplomado Falcon, the Las Lomas Preserve Project, as well as the conservation easements granted in association with port and third-party initiatives. Through these efforts, the port is safeguarding the natural beauty and ecological diversity of the Rio Grande Valley, ensuring a greener future for generations to come.

Known as the premier ship recycling port of the United States, ship dismantling operations at the port are conducted to the highest safest standards. Home to three major ship recycling facilities, All Star Metals, International Shipbreaking Ltd./EMR, and SA Recycling/

[portofbrownsville.com](http://portofbrownsville.com)

SteelCoast, these companies capture over 85 percent of the U.S. Navy and MARAD ship recycling business. The benefits of ship recycling make a significant environmental impact as fewer resources are required to manufacture products from metal scrap as compared to metal ore. Additionally, recycling steel scrap from end-of-life ships reduces air and water pollution and water consumption.

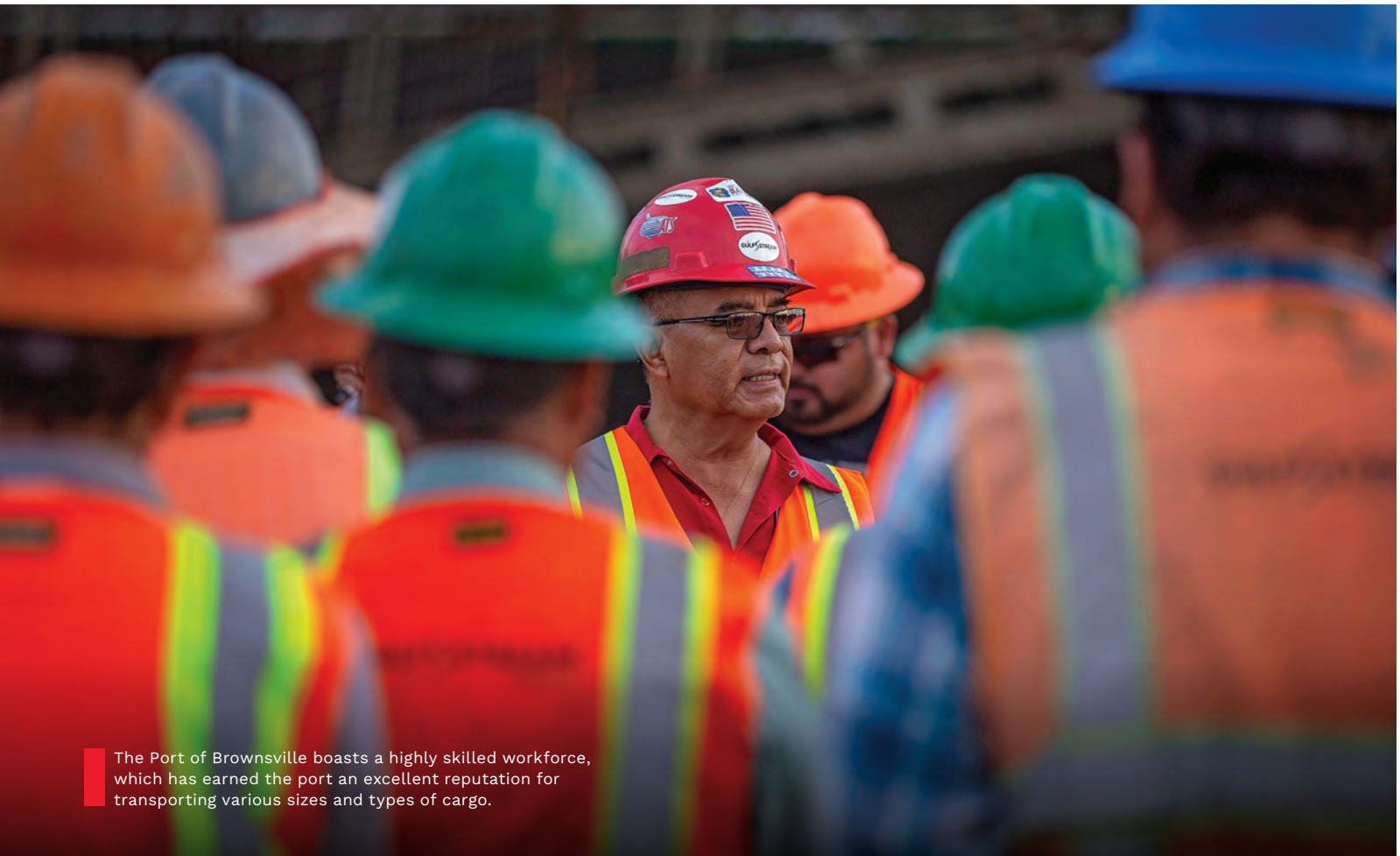
The Port of Brownsville is a vital partner in the Friends of the RGV Reef project, contributing to the creation of an artificial reef that enhances marine biodiversity and recreational opportunities. Covering 1,650 acres and located 12 miles north of the South Padre Island jetties within state territorial waters, RGV Reef is the most extensive artificial reef in Texas and boasts an impressive amount of material. The artificial reef not only enhances biodiversity but also contributes to the local economy by attracting divers, anglers, and ecotourists.

The Port of Brownsville's dedication to environmental stewardship showcases its commitment to protecting the environment while fostering sustainable economic development.

# DEVELOPING HUMAN CAPITAL

As the leading economic engine and major job creator for the Rio Grande Valley, the Port of Brownsville sees the development of a highly skilled workforce as central to the economic vitality of the region.

Activity at the port is responsible for more than 51,000 jobs in Texas, generating over \$3 billion in annual state economic activity, according to recent analysis. With over 9,000 regional workers directly employed by activities at the port, it infuses \$2.6 billion annually into the Rio Grande Valley.



The Port of Brownsville boasts a highly skilled workforce, which has earned the port an excellent reputation for transporting various sizes and types of cargo.

The port recognizes the importance of building human capital to sustain existing industries and attract new ones, which is why it collaborates with tenants, local schools, colleges, universities, technical schools, and workforce development leaders to create career opportunities for local residents.

The Port of Brownsville Scholarship Program was established in 2020 to help deserving students pursue higher education and career dreams. Each year, the port awards high school graduating seniors with a \$1,000 scholarship to help them continue their education. To date, the scholarship program has awarded \$126,000 benefitting 126 students attending schools within the navigation district.







Activities at the port are responsible for more than 9,000 jobs in the Rio Grande Valley.

Brownsville is rapidly growing as a global shipbuilding and ship recycling center, providing a solid base for well-paying industrial skilled jobs. The local workforce is technically savvy, adaptable, and motivated to succeed, making them a valuable asset to the port's three skilled stevedoring operations. These companies, Dix Shipping, Schaefer Stevedoring, and Gulf Stream Marine, collaborated in the movement of 13.8 million tons of cargo last year, representing the backbone and muscle of the port that works with impeccable records of safety and efficiency, resulting in staggering economic impacts.







Rail lines at the Port of Brownsville provide seamless connectivity in the port's multimodal logistical chain facilitating the movement of cargo efficiently.

## RAIL KEY IN CONNECTING MARKETS

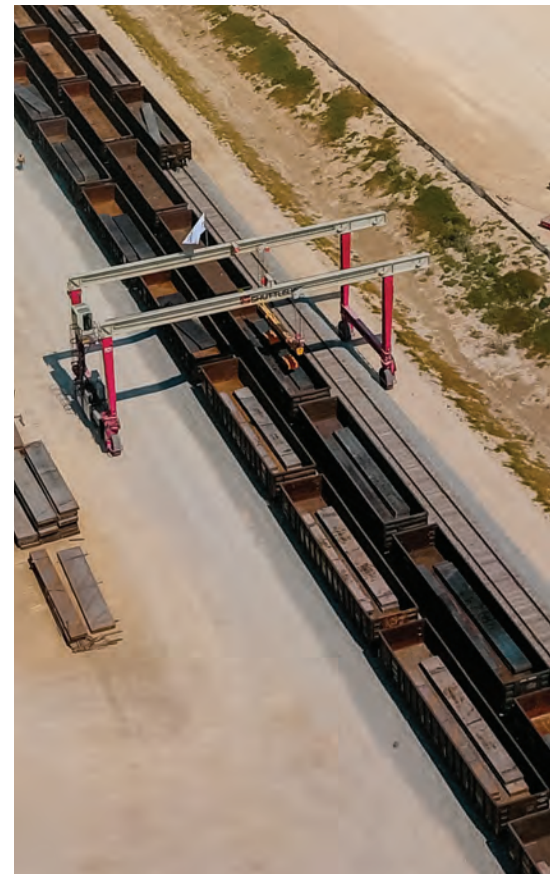
Formed in 1984 by the Brownsville Navigation District, the Brownsville Rio Grande International Railway (BRG) provides consistent, safe and reliable service to Port of Brownsville users, operating on more than 45 miles of rail within the port.

The shortline railroad provider offers the port and its customers access to three Class 1 railroads — Union Pacific, Burlington Northern Santa Fe and Canadian Pacific Kansas City for access into Mexico.

In 2022, the number of annual carloads continued an upward trend with an all-time record-breaking 72,616 movements, a 10.2 percent increase from the previous year which saw 65,865 loaded railcars handled.

The Port of Brownsville services a wide range of diverse and growing industries across North America that rely on the port for the efficient movement of steel, wind energy components, refined petroleum products, aggregates, agriculture products and other commodities to support a thriving supply chain.

Since 2014, OmniTRAX Inc., under agreement, has managed the BRG enhancing services for port rail users while aiming to attract new shippers in the manufacturing and distribution industries.





# SAFETY MEANS BUSINESS



The Port of Brownsville Police and Security Department plays a pivotal role in protecting the port's tenants and community interests through land and water patrols to maintain a secure business environment.

The Port of Brownsville Police and Security Department works diligently and tirelessly to maintain the peace and protect life and property at the port.

The team of dedicated sworn police officers and security guards monitor and patrol the 40,000 acres of land and 17-mile-long ship channel to ensure the safety of workers and cargo.

The department is tasked with maintaining operations at the port. Officers stand at the ready to enforce traffic laws to maintain vital operations with 24/7 surveillance by land and water. In addition to patrolling the ship channel, port police and security personnel check the identification of everyone at the port's entrances. Continuous training and investment in infrastructure to provide a secure environment to the port community is vital to the department's success.

Officers participate in the annual Area Maritime Security Training and Exercise Program (AMSTEP) with more than

20 federal, state, and local agencies to assess response capability for security incidents. The department works in close cooperation with the U.S. Coast Guard and U.S. Customs and Border Protection at the federal level, and the Texas Department of Public Safety, the Cameron County Sheriff's office and the Brownsville Police Department at the state and local level supporting the port's security efforts.





# FISHING HARBOR OFFERS A TASTE OF THE GULF COAST

The Port of Brownsville's Fishing Harbor is home to a variety of commercial fishing vessels, including shrimp boats, trawlers, and longliners.

The Fishing Harbor provides easy access to the Gulf of Mexico and the Brazos Santiago Pass, which is known for its abundant fishing opportunities. Located on the north side of the Brownsville Ship Channel, about five miles east of the Turning Basin, the fishing harbor features three 14-foot-deep basins with nearly 9,000 linear feet of docks.

Texas fishermen work year-round, but the peak season opens each July with the traditional Blessing of the Fleet. Each year, fishermen and their families gather before leaving port to pray for a bountiful harvest and for the well-being of all shrimpers while at sea. Locally, the port's fleet catches approximately 12 to 14 million pounds of shrimp annually valued at approximately \$72 million. Additionally, the local shrimp industry supports 1,700 jobs in Cameron County.

The Texas Department of Agriculture reports Texas is the top producer of quality, wild-caught shrimp with Texas seafood generating \$846 million in sales and creating 14,134 jobs for Texans.

The fishing harbor is located on the north side of the Brownsville Ship Channel, just a brief five-mile drive east of the Turning Basin with three 14-foot-deep basins and nearly 9,000 linear feet of docks.





The International Seafarer Center offers respite to travelers from all faiths as they dock at the port.

# RESPIRE FOR WEARY SAILORS

The International Seafarer Center serves as an oasis of support and respite to mariners from around the world whose vessels call on the Port of Brownsville. The center has been providing spiritual and physical support to honor the challenging lives and work of ship crews since 1974.

Since 2009, Chaplain Andreas Lewis has welcomed guests of all faiths to the center with open arms and support. Chaplain Lewis boards all types of cargo ships, including liquid, bulk, and break-bulk vessels, arriving at the port and provides crew members with SIM cards or helps them with shopping lists. With the center's assistance, seafarers are able to make trips to local stores to purchase supplies such as groceries, equipment, and other goods.

At the modern facility, crew members can enjoy the counsel of Chaplain Lewis or use the center's services to relax and connect with family members. Visits to the Seafarer Center are free, with the center's operating income generated by contributions from visiting vessels, local churches, the sale of SIM cards, and donations to offset transportation costs. The facility is overseen by a six-member board.



Chaplain Andreas Lewis

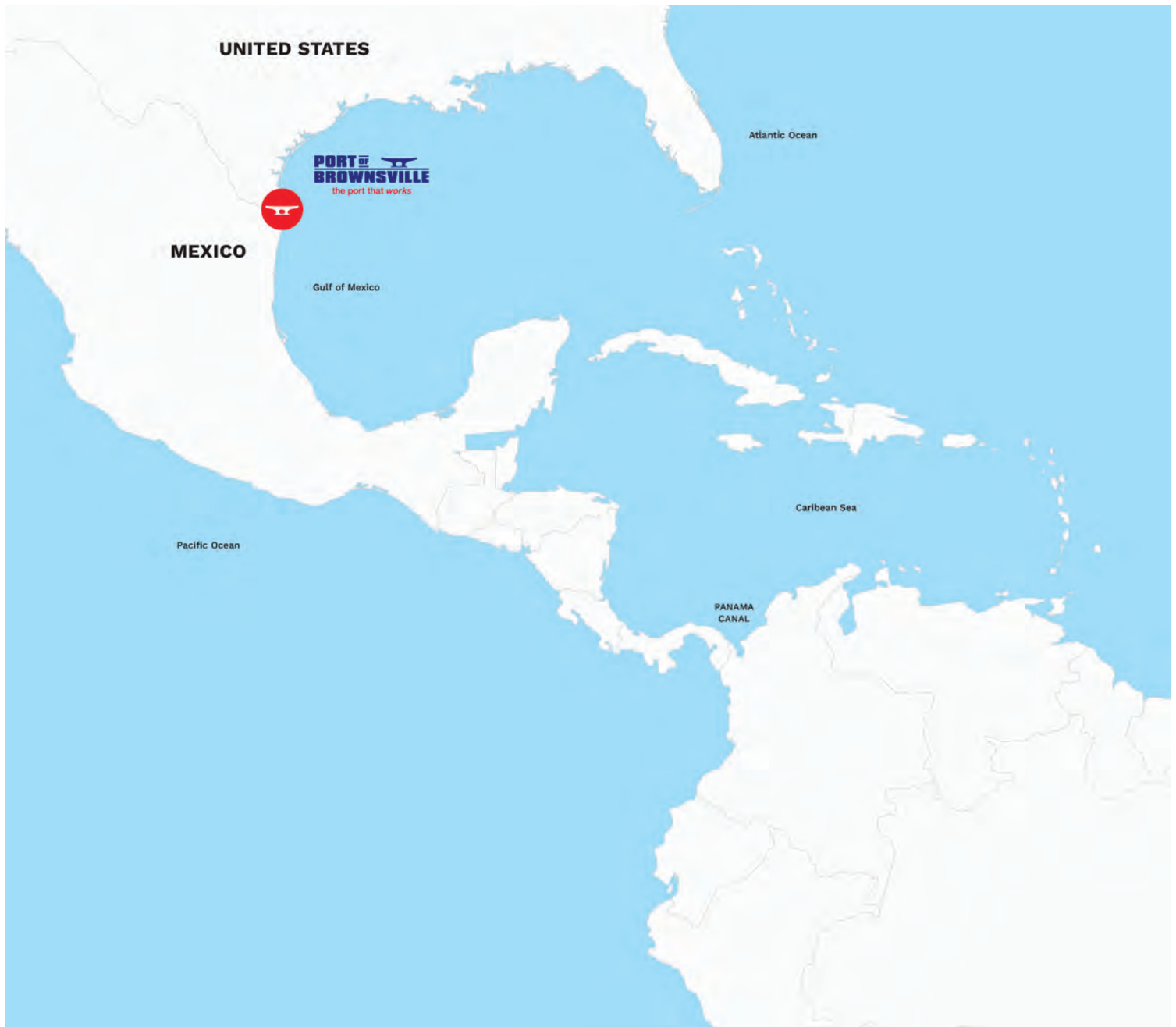
As the number of ships calling at the Port of Brownsville continues to grow, the International Seafarer Center attends to the growing demands of its visitors. Chaplain Lewis is available to those wishing to utilize the center's services by phone at 956-831-4321 or 956-371-6039, or by email at [palbro05@gmail.com](mailto:palbro05@gmail.com).

# FAST FACTS

## LOCATION

The Port of Brownsville is at the southernmost tip of Texas, at the southern terminus of the Gulf Intracoastal Waterway, near the mouth of the Rio Grande.

- Latitude 25°57'3.75N
- Longitude 97°24'1.13"W
- 40,000 acres of land
- 17-mile-long ship channel







The Port of Brownsville is the only deepwater seaport directly on the U.S.-Mexico border, and the largest land-owning public port authority in the U.S. with 40,000 acres of land.

# INTERMODAL CONNECTIVITY

The Port of Brownsville offers easy highway and interstate connections with access to Interstate 69, via State Highway 550 (soon to be renamed Interstate 169), and to State Highway 48. Crossing the border with cargo to and from Mexico is simple. The port is only 7.4 miles from the Veterans International Commercial Bridge and 29 miles to the Free Trade Commercial Bridge at Los Indios.

## NEARBY INTERSTATES AND HIGHWAYS

### UNITED STATES

- Interstate 69E
- Interstate 169
- Interstate 2
- U.S. Highway 281
- U.S. Highway 77
- U.S. Highway 83
- State Highway 550
- State Highway 48
- State Highway 4

### MEXICO

- Federal Highway 2
- Federal Highway 101
- Federal Highway 40/40D (Interoceanic Highway)



## DISTANCE FROM THE PORT OF BROWNSVILLE TO:

### UNITED STATES

McAllen .....	60 miles
Corpus Christi .....	161 miles
Laredo .....	205 miles
San Antonio .....	278 miles
Austin .....	350 miles
Houston .....	355 miles
Dallas .....	550 miles
New Orleans .....	700 miles
Oklahoma City .....	738 miles
Tulsa .....	802 miles
El Paso .....	830 miles
St. Louis .....	1,200 miles
Denver .....	1,210 miles
Phoenix .....	1,259 miles
Chicago .....	1,430 miles
Columbus, OH .....	1,507 miles

### MEXICO

Matamoros .....	9 miles
Reynosa .....	71 miles
Monterrey .....	200 miles
Ciudad Victoria .....	210 miles
Saltillo .....	268 miles
Tampico .....	321 miles
Torreón .....	404 miles
San Luis Potosí .....	415 miles
León .....	534 miles
Durango .....	578 miles
Guadalajara .....	627 miles
Mexico City .....	656 miles
Chihuahua .....	713 miles
Mazatlán .....	731 miles
Coatzacoalcos .....	797 miles
Mérida .....	1,243 miles





## NEARBY INTERNATIONAL BRIDGES (UNITED STATES/MEXICO CROSSINGS)

<b>GATEWAY INTERNATIONAL BRIDGE</b> Brownsville, TX/Matamoros, Tam .....	6.8 miles
<b>VETERANS INTERNATIONAL BRIDGE AT LOS TOMATES</b> Brownsville, TX/Matamoros, Tam .....	7.4 miles
<b>BROWNSVILLE MATAMOROS INTERNATIONAL BRIDGE</b> Brownsville, TX/Matamoros, Tam .....	7.6 miles
<b>BROWNSVILLE WEST RAIL</b> Brownsville, TX/Matamoros, Tam .....	13 miles
<b>FREE TRADE BRIDGE AT LOS INDIOS</b> Los Indios, TX/Lucio Blanco, Tam .....	29 miles
<b>WESLACO-PROGRESO INTERNATIONAL BRIDGE</b> Progreso, TX/Nuevo Progreso, Tam .....	39.9 miles
<b>DONNA INTERNATIONAL BRIDGE</b> Donna, TX/Rio Bravo, Tam .....	46.7 miles
<b>PHARR-REYNOSA INTERNATIONAL BRIDGE</b> Pharr, TX/Reynosa, Tam .....	61 miles
<b>MCALLEN-HIDALGO INTERNATIONAL BRIDGE</b> Hidalgo, TX/Reynosa, Tam .....	66.3 miles
<b>ANZALDUAS INTERNATIONAL BRIDGE</b> Mission, TX/Reynosa, Tam .....	69.6 miles



# RAILROAD

The Brownsville Rio Grande International Railway (BRG) offers Port of Brownsville customers efficient and reliable railroad service with more than 45 miles of rail within the port, and connects to three Class I railroads – Union Pacific, BNSF, and Canadian Pacific Kansas City for access into Mexico.

The BRG is operated by OmniTRAX.

## **BROWNSVILLE RIO GRANDE INTERNATIONAL RAILWAY (BRG)**

12650 State Hwy. 48  
Brownsville, TX 78521  
Shariff Gonnella, President  
(956) 548-9202  
sgonnella@omnitrax.com  
www.omnitrax.com

## **BURLINGTON NORTHERN SANTA FE RAILWAY (BNSF)**

4433 Exchange Ave.  
Vernon, CA 90058  
Samantha Galltin, Director, Port Business Development  
(323) 277-2016  
samantha.galltin@bnsf.com  
www.bnsf.com

## **CANADIAN PACIFIC KANSAS CITY (CPKC)**

Ave. Manuel L. Barragán 4850 Norte  
Col. Hidalgo, Monterrey, Nuevo Leon, MX CP 64290  
David Eaton, Business Development Country  
Director - Mexico  
(+52) 818 305-7850  
deaton@cpkcm.mx  
www.cpkcsr.com/es-mx

## **OMNITRAX INC. (BRG)**

252 Clayton St., 4th Floor  
Denver, CO 80206  
Tony Chavez, Vice President of Business Development  
(832) 462-5111  
tchavez@omnitrax.com  
www.omnitrax.com

## **UNION PACIFIC RAILROAD**

24125 Aldine Westfield Road  
Spring, TX 77373  
(281) 350-7592  
Juan P. Montalvo, Lead Sales - Southern Region  
jpmontal@up.com  
www.up.com







# CRANES

## TEREX GOTTWALD HMK 300E

- Multi-purpose crane handling project, heavy-lift bulk, breakbulk and general cargo.
- **Lifting capacity:** 110 short tons.
- **Maximum Radius:** 164 feet.
- **Eye view from operator's cab:** 75.46 feet.

## TEREX GOTTWALD G HMK 6507

- Multi-purpose crane handling project, heavy-lift bulk, breakbulk and general cargo.
- **Lifting capacity:** 138 short tons.
- **Maximum Radius:** 167 feet.
- **Eye view from operator's cab:** 85.6 feet.

## TEREX GOTTWALD G HMK 6507

- Multi-purpose crane handling project, heavy-lift bulk, breakbulk and general cargo.
- **Lifting capacity:** 138 short tons.
- **Maximum Radius:** 167 feet.
- **Eye view from operator's cab:** 85.6 feet.

# PRIMARY COMMODITIES

Steel slabs, plates, wire rod, hot and cold rolled steel, beams, pipe, pig iron, ingots, and chrome ore.

Petroleum, including lubricants, gasoline, jet fuel, diesel, No. 6 oil, naphtha, vacuum gas oils.

Wax, latex, asphalt, aluminum, machinery, wind energy components, space industry components, barite, pet coke, scrap metals, limestone, sand, grain, sugar, rutile ore, bauxite, minerals, cement, salt.



## SHIP CHANNEL AND TURNING BASIN

- **Length:** 17 miles, meeting the Gulf of Mexico at the Brazos Santiago Pass.
- **Draft:** 44 ft. at entrance, 42 ft. up to the Turning Basin, 36 ft. in the Turning Basin.
- **Channel deepening project** from 42 ft. to 52 ft. began 2023.
- **Turning Basin Width:** 1,200 ft.
- **Miles to ship buoy:** 1.7

## LARGEST VESSEL TURNED

- **Length:** 1,000+ ft.
- **Beam:** 157 ft.

## FOREIGN TRADE ZONE NO. 62

In 2022, FTZ No. 62 ranked 2nd in the nation for the value of exports and has consistently ranked in the top three out of 193 FTZs nationwide since 2012.

## SCALE HOUSES

### PORT PUBLIC SCALE

3501 Foust Road • Brownsville, TX 78521  
Tel (956) 838-0606  
publicscale@yahoo.com  
M-F, 9 a.m. – 6 p.m.

### QUALITY WEIGHING SERVICES INC.

875 N. Milo Road • Brownsville, TX 78521  
Tel (956) 831-8253  
qualityweighing@att.net  
M-F, 8 a.m. – 6 p.m.

### WESTPLAINS LLC

9155 R.L. Ostos Road • Brownsville, TX 78521  
Tel (956) 620-2020  
M-F, 8 a.m. – 5 p.m.

### HARBOR MASTER OFFICE

400 Windhaus Road • Brownsville, TX 78521  
(956) 831-8256 (24/7)  
Marine VHF Radio Channels 12 and 16  
Michael Davis, Harbor Master  
Carlos Martinez, Assistant Harbor Master

### BRAZOS SANTIAGO PILOTS

P. O. Box 414 • Port Isabel, TX 78578  
(956) 943-3680  
[www.brazossantiagopilots.com](http://www.brazossantiagopilots.com)

### PORT POLICE & SECURITY

2993 N. Indiana Ave. • Brownsville, TX 78526  
(956) 509-2100 Office  
(956) 831-8256 (24/7)  
William G. Dietrich, Police Chief

### U.S. COAST GUARD MSD BROWNSVILLE

(956) 832-0517  
[www.uscg.mil/d8/sectcorpuschristi](http://www.uscg.mil/d8/sectcorpuschristi)

### U.S. CUSTOMS & BORDER PROTECTION

(956) 831-4121 or (956) 983-5854



## UTILITY COMPANIES

### AEP TEXAS

355 W. Hwy. 77 • San Benito, TX 78586  
(956) 361-2088 Fax (956) 361-2090  
Contact: Danny Lucio, External Affairs Manager  
dlucio@aep.com  
www.aeptexas.com

### BROWNSVILLE PUBLIC UTILITIES BOARD (BPUB)

1425 Robinhood Drive • Brownsville, TX 78521  
(956) 983-6242  
Contact: Eduardo Campirano Jr., Key Accounts Manager  
Email: ecampiranojr@brownsville-pub.com  
www.brownsville-pub.com

### MAGIC VALLEY ELECTRIC COOPERATIVE

1 ¾ Mile W. Hwy. 83 • Mercedes, TX 78570  
(956) 289-4071  
Contact: Abraham Quiroga, Business Development  
Division Manager  
aquiroga@magicvalley.coop  
www.magicvalley.coop

### TEXAS GAS SERVICE

P.O. Box 531827 • Harlingen, TX 78553  
(956) 444-3913 or (956) 357-3106  
Contact: Victor Lopez, Sales Representative  
victor.lopez@onegas.com  
www.onegas.com

## BROWNSVILLE AND THE RIO GRANDE VALLEY AT A GLANCE

Brownsville is the county seat of Cameron County, Texas, and the 16th most populous city in Texas with a 2020 population estimated at 186,738. Located at the southernmost tip of Texas on the northern bank of the Rio Grande, Brownsville is directly north and across the border from Matamoros, Tamaulipas, Mexico. The historic city served as a site for several battles and events in the Texas Revolution, the Mexican–American War, and the American Civil War.

The Rio Grande Valley of Texas, covers 1,881 square miles, has a population of approximately 1.5 million, and is comprised of 46 cities and towns and more than 100 communities. Additionally, the RGV enjoys close personal and professional relationships with the people in the Mexican states of Tamaulipas and Nuevo Leon.

## PORT ECONOMIC IMPACT

- 51,468 Texas jobs created by port activity
- \$3 billion of total state economic activity
- \$201 million in federal, state and local taxes
- \$2.6 billion total personal income and local consumption

Source: The Economic Impacts of the Port of Brownsville, 2018, Martin Associates

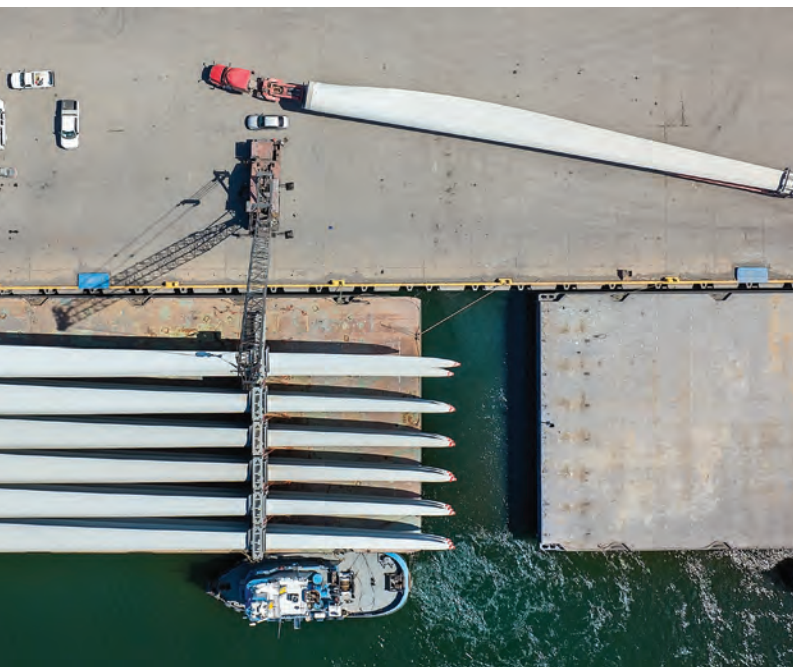
## HIGHER EDUCATION INSTITUTIONS

- University of Houston
- Texas State Technical College
- Texas Southmost College
- Texas A&M University
- The University of Texas Rio Grande Valley
- South Texas College
- Our Lady of the Lake University

## ECONOMIC DEVELOPMENT ORGANIZATIONS

- Greater Brownsville Incentives Corporation
- Harlingen Economic Development Corporation
- McAllen Economic Development Corporation
- Mission Economic Development Corporation
- RGV Partnership

See page 49 for full list of regional economic development organizations.







The Port of Brownsville offers seamless logistics, connecting industries in North America with international markets.



# POWERING WIND ENERGY

Let the Port of Brownsville be your gateway to North America and beyond.

## OUR ADVANTAGE

- 80+ acres of purpose-built facilities to accommodate heavy point-load bearing cargo
- Receiving and shipping wind energy components via vessel, barge, truck, and rail
- Direct Access to USMCA Interstate Corridors
- Class 1 Rail Service in U.S. and Mexico (UP, BNSF, CPKC)
- More than 3 million sq. ft. of open storage
- 13 general cargo docks
- Channel Depth: 42 ft.; channel deepening to 52 ft. underway
- Foreign Trade Zone No. 62



SCAN THE CODE  
TO WATCH VIDEO

## CONTACT US

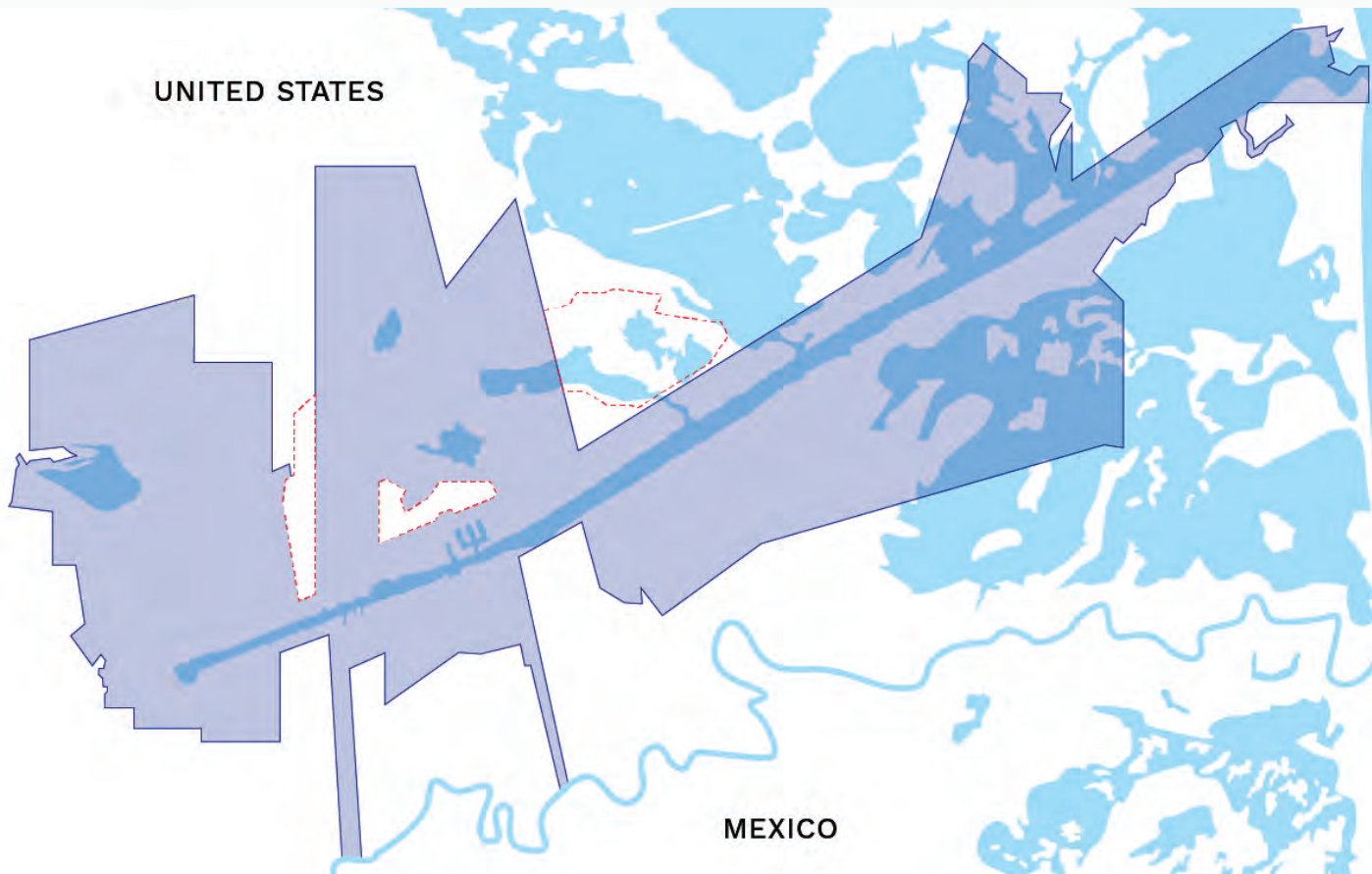
1000 Foust Road Brownsville, TX 78521  
+1 (956) 831-4592  
[www.portofbrownsville.com](http://www.portofbrownsville.com)

**PORT OF  
BROWNSVILLE**  
the port that works

## PRIME LOCATION

The Port of Brownsville's proximity to Mexico, and the rest of Latin America, uniquely positions the port to serve as the transshipment gateway delivering goods and materials to nearby multinational manufacturing centers on both sides of the border.

More than 10 million consumers are within a three-hour drive of the port, with many of those located across the border.



## PORT OF BROWNSVILLE BOUNDARIES

The Port of Brownsville is the largest land-owning public port authority in the U.S. with approximately 40,000 acres. The District's boundary lines stretch to the Rio Grande River, making it the only deepwater seaport directly on the U.S.-Mexico border.

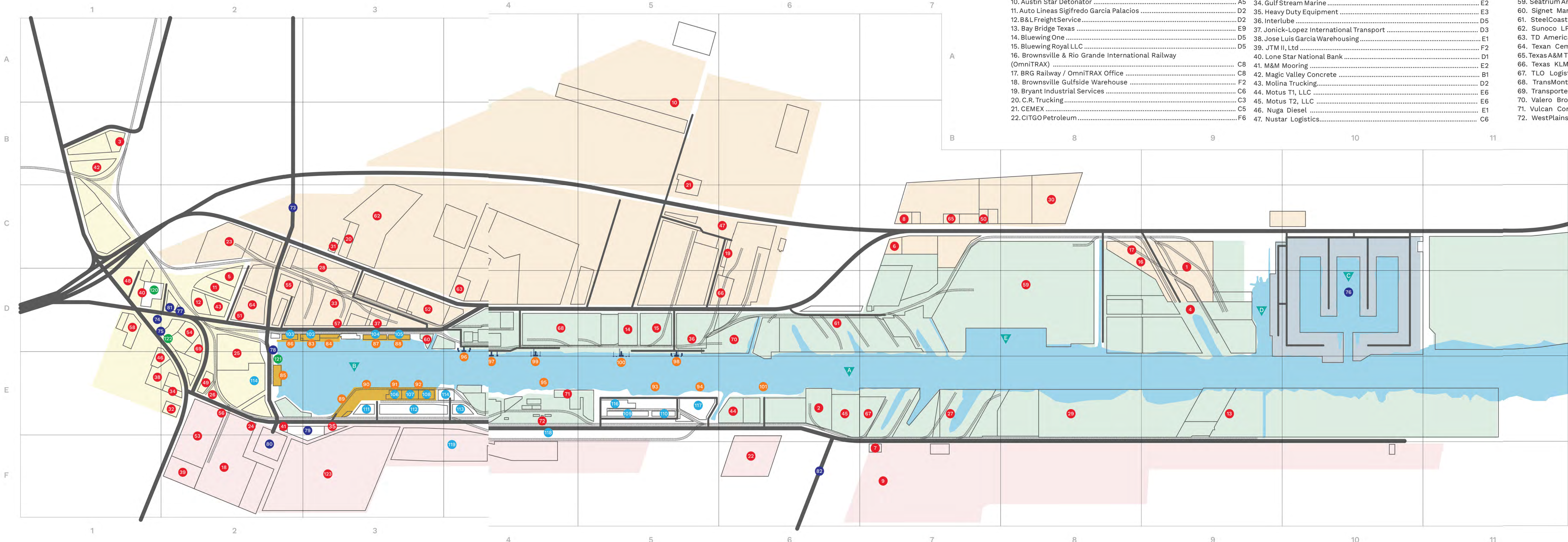






# FACILITY MAP

FOR AVAILABLE PROPERTY AND LEASE RATES  
CONTACT THE INDUSTRIAL DEVELOPMENT  
DEPARTMENT: (956) 838-7019.



## TENANTS

1. 905/BMW	C9
2. ABC Gulf Coast Terminal	E6
3. Alamo Concrete Products	B1
4. All Star Metals	D9
5. Allied Mineral Products	D2
6. American Oxygen Co	C7
7. AMSPEC	F7
8. Arguindegui Oil Co	C7
9. ARX ENERGY, LLC	F7
10. Austin Star Detonator	A5
11. Auto Lineas Sigifredo Garcia Palacios	D2
12. B&L Freight Service	E2
13. Bay Bridge Texas	D9
14. Bluewing One	D5
15. Bluewing Royal LLC	D5
16. Brownsville & Rio Grande International Railway (OmniTRAX)	C8
17. BRG Railway / OmniTRAX Office	C8
18. Brownsville Gulfside Warehouse	F2
19. Bryant Industrial Services	C6
20. C.R. Trucking	C3
21. CEMEX	C5
22. CITGO Petroleum	F6
23. CSC Sugar / Sugaright	C2
24. Dix Shipping	E2
25. Duro Bag/Novolex	E2
26. Electro-Hi	E2
27. EMR/International Shipbreaking	E7
28. Firebird Bulk Carriers	D3
29. Fortune Ferrous	E8
30. Forza Steel, LLC	C8
31. Frajara Express, LLC	C3
32. GDO Trucking	E2
33. Gulf Facilities	D3
34. Gulf Stream Marine	E2
35. Heavy Duty Equipment	E3
36. Interlube	D5
37. Jonick-Lopez International Transport	D3
38. Jose Luis Garcia Warehousing	E1
39. JTM II, Ltd	F2
40. Lone Star National Bank	D1
41. M&M Mooring	E2
42. Magic Valley Concrete	B1
43. Molina Trucking	D2
44. Motus T1, LLC	E6
45. Motus T2, LLC	E6
46. Nuga Diesel	E1
47. Nustar Logistics	C6

48. Palo Alto Investments	D1
49. Plitt Crane	E2
50. Port Occupational and Medical Clinic	C7
51. Port of Brownsville Public Scale	D2
52. Port of Brownsville Recycling	D3
53. Port Warehouse Properties	F2
54. Quality Weighing Service	D2
55. RM Walsdorf	D2
56. Rodicel	E2
57. Schaefer Stevedoring	D3
58. Seahorse Transportation	D1
59. Seatrium AmFELS	D8
60. Signet Maritime	D3
61. SteelCoast	D6
62. Sunoco LP	C3
63. TD American Limestone Products	D4
64. Texas Cement	D2
65. Texas A&M TRAIN Es Tu Futuro	C7
66. Texas KLM LLC	D6
67. TLO Logistics	E7
68. TransMontaigne	D4
69. Transporte Internacional Lopez Ochoa	D2
70. Valero Brownsville Terminal	D6
71. Vulcan Construction Materials	E4
72. WestPlains	E4

## FACILITIES

73. SH 550 Entrance	C2
74. Administration Complex	D1
75. Command Center	D3
76. Fishing Harbor	D10
77. Foust Road Entrance	D2
78. Harbor Master Office	D2
79. Maintenance Shop	E3
80. Ostos Road Truck Staging Area	F2
81. Permit Office	D2
82. South Port Connector Road Entrance	F6

## DOCKS

83. Dock 1	D3
84. Dock 2	D3
85. Dock 3	E2
86. Dock 4	D2
87. Dock 7	D3
88. Dock 8	D3
89. Dock 10	E3
90. Dock 11	E3
91. Dock 12	E3
92. Dock 13	E3
93. Dock 15	E5
94. Dock 16	E5
95. Bulk Cargo Dock	E4
96. Liquid Cargo Dock 1	E4
97. Liquid Cargo Dock 2	E4
98. Liquid Cargo Dock 3	E5
99. Liquid Cargo Dock 5	E4
100. Liquid Cargo Dock 6	E5
101. Liquid Cargo Dock	E6

## SHEDS AND PATIOS

102. Shed 1	D3
103. Shed 4	D2
104. Shed 7	D3
105. Shed 8	D3
106. Shed 12	E3
107. Shed 13	E3
108. Shed 14	E3
109. Shed 15W	E5
110. Shed 15E	E5
111. Patio 11	E3
112. Patio 12	E3
113. Patio 13	E4
114. Patio 14	E4
115. West Patio	E2
116. Patio 15	E5
117. Patio 16	E5
118. Patio 20	E4
119. Patio 22	F4

## SERVICES

120. Brownsville Fire Department Station 8	D1
121. International Seafarer Center	E2
122. U.S. Coast Guard	D2

## PORT OF BROWNSVILLE BUSINESS PARK

123. Port of Brownsville Business Park	F3
--	----

## SHIP CHANNEL DEPTHS

A. Ship Channel: 42 ft. draft	E6
B. Turning Basing: 36 ft. 5 in. draft	E4
C. Fishing Harbor: 14 ft. draft	D10
D. Fleeting Area: 13 ft. draft	D9
E. Seatrium AmFELS: 90+ ft. draft	D8







## GLOBAL REACH

From its strategic location in the western Gulf of Mexico, no other port better serves the commercial interests of both the United States and Mexico than the Port of Brownsville.

It is well positioned to participate in trade utilizing the Panama Canal and is in close proximity to key markets throughout North America.





# OVERALL FACILITIES



Approximately

**40,000**

Acres of Land



**1 M SQFT**

Covered Storage



**13**

Cargo Docks



**3 M SQFT**

Open Storage



**6**

Liquid Cargo Docks



**39 FT**

Current Vessel Draft

**Authorized draft of Ship Channel: 42 ft., with project to deepen to 52 ft underway.**

All authorized drafts are subject to shoaling and other conditions which may result in vessel restrictions. Fendering systems available for additional draft. For current information contact the Harbor Master Office at (956) 831-8256.



## DOCK NO. 1 GENERAL CARGO



**LOCATION:** North side of Turning Basin.

**VESSEL DRAFT:** 26.4 ft. nominal. • 10 ft. off dock special fendering: 31 ft.

**DIMENSIONS:** Length: 420 ft.; Width: 165 ft.; Height: 14 ft. 8 in.

**SHED:** 400 x 120 ft., steel construction, storage space: 46,250 sq. ft.

**FLOOR AND APRONS:** 650 lbs./sq. ft.

**SHIPSIDE APRON:** 35 ft. wide.

**REAR APRON:** 10 ft. wide.

**RAIL ACCESS:** Double depressed tracks adjacent to dock.

## DOCK NO. 2 GENERAL CARGO



**LOCATION:** North side of Turning Basin.

**VESSEL DRAFT:** 25 ft. 5 in. nominal. • 10 ft. off dock special fendering: 30 ft.

**DIMENSIONS:** Length: 420 ft.; Width: 165 ft.; Height: 14 ft. 8 in.

**PATIO/DOCK:** 400 x 81 ft., steel construction; storage space: 32,400 sq. ft.

**FLOOR AND APRONS:** 650 lbs./sq. ft. capacity, concrete.

**SHIPSIDE APRON:** 74 ft. wide.

**REAR APRON:** 10 ft. wide.

**RAIL ACCESS:** Double depressed tracks adjacent to dock.

## DOCK NO. 3 GENERAL CARGO



**LOCATION:** West side of Turning Basin.

**VESSEL DRAFT:** 32 ft. 5 in. nominal. • 10 ft. off dock special fendering: 32 ft. 5 in.

**DIMENSIONS:** Length: 440 ft.; Width: 165 ft.; Height: 14 ft. 8 in.

**APRONS:** 450 lbs./sq. ft. capacity, concrete

**RAIL ACCESS:** Double depressed tracks at rear adjacent to dock.



## DOCK NO. 4 GENERAL CARGO



**LOCATION:** North side of Turning Basin

**VESSEL DRAFT:** 26 ft. nominal • 10 ft. off dock special fendering: 30 ft.

**DIMENSIONS:** Length: 420 ft.; Width: 165 ft.; Height: 14 ft. 8 in.

**SHED:** 340 x 120 ft., steel construction, storage space: 40,1800 sq. ft.

**FLOOR AND APRONS:** 650 lbs./sq. ft. capacity, concrete.

**SHIPSIDE APRON:** 35 ft. wide.

**REAR APRON:** 10 ft. wide.

**RAIL ACCESS:** Double depressed tracks adjacent to dock

## DOCK NO. 7 GENERAL CARGO



**LOCATION:** North side of Turning Basin

**VESSEL DRAFT:** 23 ft. nominal • 10 ft. off dock special fendering: 25 ft.

**DIMENSIONS:** Length: 500 ft.; Width: 140 ft.; Height: 12 ft. 8 in.

**SHED:** 480 x 100 ft., steel construction, storage space: 47,795 sq. ft.

**FLOOR AND APRONS:** 500 lbs./sq. ft. capacity, concrete.

**SHIPSIDE APRON:** 30 ft. wide.

**REAR APRON:** 10 ft. wide.

**RAIL ACCESS:** Double depressed track adjacent to dock

## DOCK NO. 8 GENERAL CARGO



**LOCATION:** North side of Turning Basin

**VESSEL DRAFT:** 23 ft. nominal • 10 ft. off dock special fendering: 25 ft.

**DIMENSIONS:** Length: 500 ft.; Width: 140 ft.; Height: 12 ft. 8 in.

**SHED:** 467 x 100 ft., steel construction, storage space: 46,700 sq. ft.

**FLOOR AND APRONS:** 500 lbs./sq. ft. capacity, concrete

**SHIPSIDE APRON:** 30 ft. wide

**REAR APRON:** 10 ft. wide

**RAIL ACCESS:** Double depressed track adjacent to dock



## DOCK NO. 10 GENERAL CARGO



**LOCATION:** South side of Turning Basin

**VESSEL DRAFT:** 13 ft. 7 in, nominal • 10 ft. off dock special fendering: 17 ft. 1 in.

**DIMENSIONS:** Length: 650 ft.; Width: 280 ft.; Height: 12 ft.

**APRON:** 750 lbs./sq. ft. capacity, concrete

**RAIL ACCESS:** One apron track, two depressed tracks at rear

## DOCK NO. 11 DEEP SEA-OPEN DOCK



**LOCATION:** South side of Turning Basin.

**VESSEL DRAFT:** 36 ft. nominal • 10 ft. off dock special fendering: 36 ft.

**DIMENSIONS:** Length: 626 ft.; Width: 280 ft.; Height: 12 ft.

**PATIO/DOCK:** 750 lbs./sq. ft. capacity, concrete.

**RAIL ACCESS:** Two shipside apron tracks

## DOCK NO. 12 GENERAL CARGO



**LOCATION:** South side of Turning Basin

**VESSEL DRAFT:** 36 ft. nominal

**DIMENSIONS:** LENGTH: 550 ft.; Width: 280 ft.; Height: 12 ft.

**SHED:** 540 x 200 ft., steel construction, 100,000 sq. ft.

**FLOOR AND APRONS:** 750 lbs./sq. ft. capacity, concrete

**SHIPSIDE APRON:** 50 ft. wide

**REAR APRON:** 30 ft. wide **RAIL ACCESS:** Double railroad track on shipside apron; double depressed track on rear apron



## DOCK NO. 13 GENERAL CARGO



**LOCATION:** South side of Turning Basin

**VESSEL DRAFT:** 34 ft. nominal • 10 ft. off dock special fendering: 34 ft.

**DIMENSIONS:** Length: 550 ft.; Width: 280 ft.; Height: 12 ft.

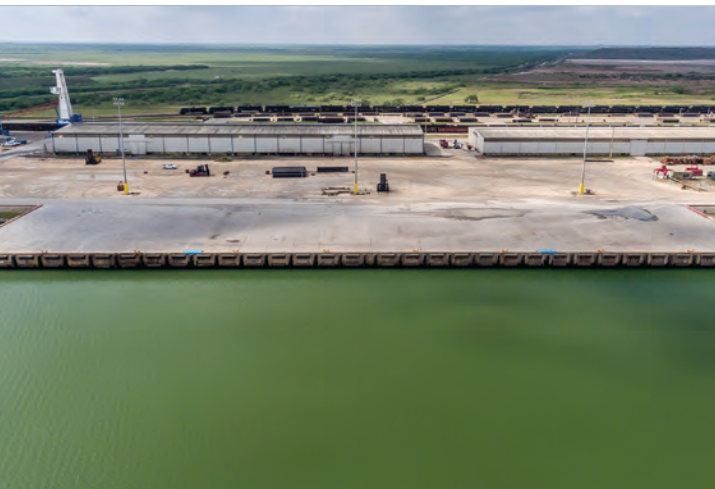
**SHED:** 470 x 200 ft., steel construction, 100,000 sq. ft.

**FLOOR AND APRONS:** 750 lbs./sq. ft.

**SHIPSIDE APRON:** 50 ft. wide

**REAR APRON:** 30 ft. wide **RAIL ACCESS:** Double railroad track on shipside apron; double depressed track on rear apron.

## DOCK NO. 15 (HEAVY/MULTI-PURPOSE OPEN DOCK)



**PORT CRANES AVAILABLE:** (2)-125MT Gottwald Harbor Cranes  
(1)-110MT Gottwald Harbor Crane

**LOCATION:** Southside of Channel 1 mile east of the Turning Basin

**VESSEL DRAFT:** 39 ft. nominal **DIMENSIONS:** Length: 600 ft.; Width: 145 ft.; Height: 12 ft.

**SHEDS:** 15 WEST: 120 x 850 = 102,000 sq. ft./Steel construction 15 EAST: 120 x 500 = 60,000 sq. ft./Steel construction with two overhead cranes with 30 short ton capacity.

**FLOORS AND APRON:** 2,500 lbs./sq. ft. capacity, concrete.

**RAIL ACCESS:** Two-rail track siding along warehouse.

**STORAGE:** 4.1 acres of improved open storage and directly adjacent to dock.

## DOCK NO. 16 (HEAVY/MULTI-PURPOSE OPEN DOCK)



**PORT CRANES AVAILABLE:** (2)-125MT Gottwald Harbor Cranes  
(1)-110MT Gottwald Harbor Crane

**LOCATION:** South side of Turning Basin Extension

**VESSEL DRAFT:** 39 ft. nominal

**DIMENSIONS:** Length: 600 ft.; Width: 145 ft.; Height: 12 ft.

**FLOORS AND APRON:** 2,500 lbs./sq. ft. capacity, concrete

**RAIL ACCESS:** Two, behind patio

**STORAGE:** 4.0 acres of improved open storage and directly adjacent to dock



## LIQUID CARGO DOCK



**LOCATION:** South side of Ship Channel 1 ½ miles east of Turning Basin

**VESSEL DRAFT:** 39 ft. nominal • 10 ft. off dock special fendering: 39 ft.

**CENTRAL PLATFORM:** 30 x 60 ft.

**CONSTRUCTION:** Concrete and steel “H” pilings, four breasting dolphins each 23 x 25 ft.

## LIQUID CARGO DOCK 1



**LOCATION:** South side of Turning Basin

**VESSEL DRAFT:** 13 ft. 7 in. nominal • 10 ft. off dock special fendering: 17 ft. 1 in.

**DIMENSIONS:** Length: 650 ft.; Width: 280 ft.; Height: 12 ft.

**APRON:** 750 lbs./sq. ft. capacity, concrete.

**RAIL ACCESS:** One apron track, two depressed tracks at rear.

## LIQUID CARGO DOCK 2



**LOCATION:** North side of Turning Basin Extension

**VESSEL DRAFT:** 27 ft. nominal. • 10 ft. off dock special fendering: 32 ft.

**DIMENSIONS:** Length: 420 ft. O.A., 120 ft. pier; Height: 14.8 ft.

**CONSTRUCTION:** Pile and timber “T” head; steel pipe pile dolphins

**EQUIPMENT:** Hydraulic hose handling cranes

## LIQUID CARGO DOCK 3



**LOCATION:** North side of Ship Channel 1 ¼ miles east of Turning Basin  
**VESSEL DRAFT:** 39 ft. nominal. • 10 ft. off dock special fendering: 38 ft.  
**DIMENSIONS:** Length: 420 ft. O.A., 120 ft. pier; Height: 14.8 ft.  
**CONSTRUCTION:** Pile and timber “T” head; concrete breasting unit  
**EQUIPMENT:** Hydraulic hose handling cranes

## LIQUID CARGO DOCK 5



**LOCATION:** North side of Ship Channel ¾ mile east of Turning Basin  
**VESSEL DRAFT:** 39 ft. nominal  
**LENGTH:** Slip: 1,100 ft.  
**DOCK:** 109 ft. (between moorings: 220 ft.; Height: 16 ft. 6 in.)  
**CONSTRUCTION:** Reinforced concrete  
**EQUIPMENT:** A hydraulic hose handling cranes

## LIQUID CARGO DOCK 6



**LOCATION:** North side of Ship Channel 1 mile east of Turning Basin  
**VESSEL DRAFT:** 39 ft. nominal  
**LENGTH:** Slip: 1,345 ft.  
**DOCK:** 109 ft. (between moorings: 324 ft.; Height: 16 ft. 6 in.)  
**CONSTRUCTION:** Reinforced concrete  
**EQUIPMENT:** Hydraulic hose handling cranes



## FISHING HARBOR



**LOCATION:** Four miles east of Turning Basin north of Ship Channel

**VESSEL DRAFT:** 14 ft. minimal

**DOCKS:** 8,657 linear ft. of marginal docks

**CONSTRUCTION:** Pile and timbers

## BULK CARGO DOCK/GRAIN ELEVATOR



**LOCATION:** South side of approach to Turning Basin Extension

**VESSEL DRAFT:** 39 ft. nominal. • 10 ft. off dock special fendering: 39 ft.

**DIMENSIONS:** Length: 400 ft.; Apron: 43 ft.; Height: 12 ft.

**CONSTRUCTION:** Steel pile, concrete deck

**HEIGHT OF FLAT HOUSES:** Three flat houses each measuring 100 x 320 ft.

**TOTAL CAPACITY:** 3,000,000 bushels of grain

- 1,000,000 bushels concrete elevator
- 1,000,000 bushels flat house
- 500,000 bushels flat house
- 500,000 bushels flat house

**EQUIPMENT:** Two 25,000 bushels per hour Buhler gantries; trimmer and spoons; reversible conveyors.

# BUSINESS DIRECTORY

## BUSINESS DIRECTORY INDEX

AIR CONDITIONING & REFRIGERATION .....	45
AIRPORT OPERATORS .....	45
ARCHITECTS & ENGINEERS .....	45
ASSOCIATIONS & CLUBS .....	45
ATTORNEYS .....	45
AUTOMOTIVE SERVICES .....	45
BANKS .....	45
BARGE COMPANIES .....	46
BROWNSVILLE NAVIGATION DISTRICT BOARD OF COMMISSIONERS .....	46
BUNKERING .....	47
CHAMBERS OF COMMERCE .....	47
CONSTRUCTION, GENERAL .....	47
CONSTRUCTION, MARINE .....	48
CONSULATES .....	48
CONSULTANTS, MARINE .....	48
CONTAINERS .....	48
CRANE SERVICES & RIGGING .....	48
CUSTOMS BROKERS, U.S. LICENSED .....	49
DIVERS & MARINE SALVAGERS .....	49
ECONOMIC DEVELOPMENT .....	49
ELECTRICAL SERVICES .....	50
ELECTRONICS, MARINE .....	50
ENGINEERING, MARINE .....	50

ENVIRONMENTAL & GEOTECHNICAL ENGINEERING .....	50
ENVIRONMENTAL CLEANUP .....	51
EQUIPMENT & SUPPLIES, MARINE .....	51
EXPORT PACKING & RIGGING .....	51
FOREIGN TRADE ZONE .....	51
FREIGHT FORWARDERS .....	52
GOVERNMENTAL AGENCIES .....	52
GRAIN ELEVATOR .....	52
HARBOR MASTER OFFICE .....	52
HIGHER EDUCATION INSTITUTIONS .....	52
HOTELS .....	53
INSURANCE, CARGO .....	53
INSURANCE, MARINE .....	53
LABOR ORGANIZATIONS .....	53
LINE HANDLERS .....	53
MACHINING & FABRICATING .....	53
MINERALS .....	53
MISCELLANEOUS .....	53
PILOTAGE .....	55
PIPELINE OPERATORS .....	55
PORT AUTHORITY ATTORNEY .....	55
PORT OF BROWNSVILLE ADMINISTRATION .....	55
PUBLIC SCALES .....	56
RAIL CARRIERS/SERVICE .....	56
RECYCLING .....	56
SERVICES, MARINE .....	57
SERVICES, SECURITY .....	57
SHIP REPAIR/RECYCLING .....	57
SHIPPING AGENTS .....	58
STEVEDORES .....	58
SURVEYORS, MARINE .....	58
TERMINAL OPERATORS, LIQUID BULK .....	58
TOWING, TUG .....	59
TRANSLOAD FACILITY .....	59
TRUCKING .....	59
UTILITY COMPANIES .....	59
VESSEL FUELING COMPANIES .....	59
WAREHOUSING & STORAGE .....	59
FISHING HARBOR .....	59



## AIR CONDITIONING & REFRIGERATION

### Halff Associates Inc.

1075 Paredes Line Road, Suite B  
Brownsville, TX 78521  
(956) 303-7100  
jclint@halff.com  
www.halff.com

### Quantum-Mechanical Contractors LLC.

2705 E. Davis Road, Suite A  
Edinburg, TX 78542  
(956) 513-1849  
quantum.mcon@gmail.com

## AIRPORT OPERATORS

### Brownsville South Padre Island International Airport

700 Amelia Earhart Drive  
Brownsville, TX 78521  
(956) 542-4373  
flybrownsville@brownsvilletx.gov  
www.flybrownsville.com

## ARCHITECTS & ENGINEERS

### Halff Associates Inc.

1075 Paredes Line Road, Suite B  
Brownsville, TX 78521  
(956) 303-7100  
jclint@halff.com  
www.halff.com

### HDR Engineering Inc.

555 N. Carancahua, Suite 1600  
Corpus Christi, TX 78401-0850  
(361) 696-3300 Fax: (361) 696-3385  
jeffrey.massengill@hdrinc.com  
www.hdrinc.com

### Intertek-PSI

2020 North Loop 499, Suite 302  
Harlingen, TX 78550  
(956) 423-6826 Fax: (956) 423-5735  
raymundo.martinez@intertek.com  
www.intertek.com/building

### MEG Engineers

1221 E. Tyler Ave. Harlingen, TX 78550  
(956) 702-8500 Fax: (956) 702-4180  
meg@megengineers.com  
www.megengineers.com

### Mejia & Rose Inc.

1643 W. Price Road  
Brownsville, TX 78520  
(956) 544-3022 Fax: (956) 544-3068  
mandrinc@cngmail.com  
www.mejiarose.com

### Raba Kistner

1244 Robinhood Drive, Suite 101  
Brownsville, TX 78521  
(956) 504-9777  
iarjona@rkci.com  
www.rkci.com

### RO Engineering, PLLC.

2705 E. Davis Road, Suite A  
Edinburg, TX 78542  
(956) 513-1849  
r.olivarez@ro-engineering.com  
www.ro-engineering.com

[portofbrownsville.com](http://portofbrownsville.com)

### Terracon Consultants Inc.

1506 Mid Cities Drive  
Pharr, TX 78577  
(956) 283-8254 Fax: (956) 283-8279  
stephanie.cardoza@terracon.com  
www.terracon.com

## ASSOCIATIONS & CLUBS

### American Association of Port Authorities (AAPA)

1010 Duke St.  
Alexandria, VA 22314-3589  
(703) 684-5700 Fax: (703) 684-6321  
info@aapa-ports.org  
www.aapa-ports.org

### Brownsville Licensed U.S. Customs Brokers Association

400 E. 13th St.  
Brownsville, TX 78520  
(956) 546-5544 Fax: (956) 546-0276  
rroser@rosercustoms.com

### Friends of Rio Grande Valley Reef Inc.

419 W. Hwy. 83  
Pharr, TX 78577  
(956) 433-9783  
www.rgvreef.org

### International Seafarer Center

220 W. Windhaus Road  
Brownsville, TX 78521  
(956) 831-4321  
palbro05@gmail.com  
www.brownsvilleseafarer.com

### Rio Grande Council Boy Scouts

P. O. Box 2424  
Harlingen, TX 78551  
(956) 423-0250 Fax: (956) 421-4950  
rudygonzalez@scouting.org  
www.riograndecouncil.org

### Texas Ports Association

P.O. Box 2562  
Houston, TX 77252  
(713) 670-2482 Fax: (713) 670-2429  
rguenther@poha.com  
www.texasports.org

### Texas Shrimp Association

1000 Everglades Road  
Brownsville, TX 78521  
(956) 831-6550 Fax: (956) 831-6557  
www.texasshrimpassociation.org

### West Gulf Maritime Association (WGMA)

1717 E. Loop North, Suite 200  
Houston, TX 77029  
(713) 678-7655 Fax: (855) 715-1717  
www.wgma.org

## ATTORNEYS

### Law Office of Santiago Galarza

50 E. Elizabeth St.  
Brownsville, TX 78520  
(956) 982-1984  
Fax: (956) 982-2499  
santiago@galarzalaw.net

### Philip T. Cowen CHB

500 E. Levee St. Brownsville, TX 78520  
(956) 541-6031 Fax: (956) 541-6872  
ptchb@att.net

### Rentfro, Irwin & Irwin Law Firm PLLC

1650 Paredes Line Road Suite 102  
Brownsville, TX 78521  
(956) 542-4329 Fax: (956) 542-4320  
info@rentfrolawfirm.net  
www.rentfrolawfirm.net

### Sanchez, Whittington, Wood & Dijkman LLC

3505 Boca Chica Blvd.  
Brownsville, TX 78521  
(956) 546-3731

## AUTOMOTIVE SERVICES

### Diesel Fuel Injection Inc.

6918 Padre Island Hwy.  
Brownsville, TX 78521  
(956) 831-4744 Fax: (956) 831-9473  
pmiddlediesel@gmail.com

### Nuga Diesel Truck and Trailer Parts

2951 N. Indiana Ave.  
Brownsville, TX 78521  
(956) 541-7169 Fax: (956) 541-7317  
tnunez@nugadiesel.com  
www.nugadiesel.com

## BANKS

### Bank of America

2635 Boca Chica Blvd.  
Brownsville, TX 78521  
(956) 544-6839  
www.bankofamerica.com

### Chase Bank

2300 Boca Chica Blvd.  
Brownsville, TX 78521  
(956) 982-7606  
www.chase.com

### First Community Bank

470 Morrison Road  
Brownsville, TX 78526  
(956) 547-5100  
www.fcbweb.net

### First Convenience Bank

2155 Paredes Line Road  
Brownsville, TX 78521  
(956) 504-2000  
www.1stcb.com

### Frost Bank

5480 Paredes Line Road  
Brownsville, TX 78526  
(956) 554-6301  
www.frostbank.com

### IBC Bank

1600 Ruben Torres Blvd.  
Brownsville, TX 78526  
(956) 547-1000 Fax: (956) 547-1028  
www.ibc.com

### Lone Star National Bank

3100 North Indiana Ave.  
Brownsville, TX 78521  
[www.lonestarnationalbank.com](http://www.lonestarnationalbank.com)

## BUSINESS DIRECTORY

### PlainsCapital Bank

25 E. Price Road  
Brownsville, TX 78521  
(956) 554-7100  
www.plainscapital.com

### Texas Community Bank

3505 Boca Chica Blvd. #109  
Brownsville, TX 78521  
(956) 542-7333  
www.tx-communitybank.com

### Valley Federal Credit Union

183 E Price Road  
Brownsville, TX 78521  
(956) 546-3108 Fax: (956) 544-5404  
www.vfcu.net

### Vantage Bank Texas

1785 Ruben M. Torres Blvd.  
Brownsville, TX 78521  
(956) 574-8500  
www.inbweb.com

## BARGE COMPANIES

### American Commercial Barge Line

1701 E. Market St.  
Jeffersonville, IN 47130  
(800) 457-6377  
www.bargeacbl.com

### American River Transportation Company

10400 River Road  
Ama, LA 20031  
(504) 431-1488  
www.adm.com

### Argosy Fleetng & Logistics

3118 Harrisburg Blvd.  
Houston, TX 77003  
(713) 668-3388  
www.argosyfleetng.com

### Canal Barge

835 Union St.  
New Orleans, LA 70112-1469  
(504) 581-2424 Fax: (504) 584-1505  
www.canalbarge.com

### Celtic Marine and Logistics

3888 Sherwood Forest Blvd.  
Baton Rouge, LA 70816  
(225) 752-2490 Fax: (225) 752-2582  
www.celticmarine.com

### Heartland Barge

1007 N. Main St.  
Columbia, IL 62236  
(314) 304-6688 Fax: (618) 281-4545  
willie.thomassee@hl-companies.com  
www.hl-barge.com

### Ingram Barge Line

4400 Harding Pike  
Nashville, TN 37205  
(615) 298-8200  
www.ingrambarge.com

### Iron Mike Marine Inc.

25 Hawser Bend Road  
Los Fresnos, TX 78566  
(956) 778-5906  
imm1998@aol.com

### Kirby Corporation

55 Waugh Drive, Suite 1000  
Houston, TX 77007-1745  
(713) 435-1000 Fax: (713) 435-1010  
www.kirbycorp.com

### LeBeouf Brothers Towing Company

124 Dry Dock Road  
Bourg, LA 70343  
(985) 594-6691 Fax: (985) 594-5253  
www.lebeouftowing.com

### Parker Towing

1001 Third St.  
Tuscaloosa, AL 35402  
(205) 349-1677 Fax: (205) 758-0061  
www.parkertowing.com

### Signet Maritime Corporation

7400 Foust Road  
Brownsville, TX 78521  
(956) 838-6800 Fax: (956) 838-6801  
www.signetmaritime.com

### Kuehne + Nagel

15855 Diplomatic Plaza  
Houston, TX 77032  
(281) 449-8888  
www.kuehne-nagel.com

## BROWNSVILLE NAVIGATION DISTRICT BOARD OF COMMISSIONERS

### Esteban Guerra, Chairman

1000 Foust Road  
Brownsville, TX 78521  
(956) 831-4592 Fax: (956) 831-5006  
www.portofbrownsville.com

# BROWNSVILLE LICENSED U.S. CUSTOMS BROKERS ASSOCIATION



## MEMBERS

### C&J LOGISTICAL SERVICES, INC.

JORGE A. TORRES DBA INTERLINK TRADE SERVICES  
DANIEL B. HASTINGS, INC.  
PARKER & COMPANY  
PHILIP T. COWEN, CHB  
PORT OF BROWNSVILLE

### LOERA CUSTOMS BROKERAGE, INC.

LIVINGSTON INTERNATIONAL  
NAVCO LOGISTICS  
RARE IMPORT-EXPORT, LLC.  
BORDER CUSTOMS SERVICE  
RICARDO GONZALEZ CUSTOMS BROKER, LLC.

### ROSER & J. COWEN LOGISTICAL CUSTOMS SVC LTD.

ROSER CUSTOMS SERVICE, INC.  
MATTHEW J. LEYENDECKER, SCS  
H. SAENZ JR., INC.  
TCS BROKERAGE  
HEMA LOGISTICS, LLC.

USMCA Port of Brownsville Servicing All Modes of Transportation On the Border, By the Sea



**Ralph Cowen, Vice Chairman**

1000 Foust Road  
Brownsville, TX 78521  
(956) 831-4592 Fax: (956) 831-5006  
ralphcowen@icloud.com  
www.portofbrownsville.com

**John Wood, Secretary of the Board**

1000 Foust Road  
Brownsville, TX 78521  
(956) 831-4592 Fax: (956) 831-5006  
jwarealty@aol.com  
www.portofbrownsville.com

**John Reed, Commissioner**

1000 Foust Road  
Brownsville, TX 78521  
(956) 831-4592 Fax: (956) 831-5006  
jreed37762@aol.com  
www.portofbrownsville.com

**Sergio Tito Lopez, Commissioner**

1000 Foust Road  
Brownsville, TX 78521  
(956) 831-4592 Fax: (956) 831-5006  
stlopezjr@gmail.com  
www.portofbrownsville.com

**BUNKERING****Oil Patch Fuel & Supply Inc.**

1905 Bayou Court  
Brownsville, TX 78521  
(956) 831-4839  
frank@oilpatchfuelsupply.com  
www.oilpatchfuelsupply.com

**PMI Service North America Inc.**

909 Fannin St.  
Houston, TX 77010  
(713) 567-0189  
dtolfson@pmicim.com

**CHAMBERS OF COMMERCE****Alamo Chamber of Commerce**

803 Main St.  
Alamo, TX 78516  
Tel (956) 787-2117  
alamotx.chamber@gmail.com  
www.alamochamber.com

**Alton Chamber of Commerce**

509 S. Alton Blvd. Alton, TX 78573  
(956) 432-0730 Fax: (956) 432-0766  
chamber@altontx.gov  
www.alton-tx.gov/chamber-of-commerce

**Brownsville Chamber of Commerce**

1600 W. University Blvd.  
Brownsville, TX 78520  
(956) 542-4341 Fax: (956) 504-3348  
info@brownsvillechamber.com  
www.brownsvillechamber.com

**Edinburg Chamber of Commerce**

602 W. University Drive  
Edinburg, TX 78539  
(956) 383-4974 Fax: (956) 383-6942  
chamber@edinburg.com  
www.edinburg.com

portofbrownsville.com

**Harlingen Area Chamber of Commerce**

311 E. Tyler Ave.  
Harlingen, TX 78550  
(956) 423-5440 Fax: (956) 425-3870  
info@harlingen.com  
www.harlingen.com

**La Feria Chamber of Commerce**

126-A East Commercial Avenue  
La Feria, TX 78559  
(956) 277-0601  
laferiachamberofcommerce@gmail.com  
www.laferiachamber.com

**Los Fresnos Chamber of Commerce**

520 E. Ocean Blvd.  
Los Fresnos, TX 78566  
(956) 233-4488  
office@losfresnoschamber.com  
www.losfresnoschamber.com

**McAllen Chamber of Commerce**

1200 Ash Ave.  
McAllen, TX 78501  
(956) 682-2871 Fax: (956) 687-2917  
steve@mcallenchamber.com  
www.mcallen.org

**Mercedes Chamber of Commerce**

320 S. Ohio Ave.  
Mercedes, TX 78570  
(956) 565-2221 Fax: (956) 432-0766  
www.mercedeschamber.com

**Mission Chamber of Commerce**

202 W. Tom Landry Road  
Mission, TX 78572  
(956) 585-2727  
gmcc@missionchamber.com  
www.missionchamber.com

**Palmview Chamber of Commerce**

400 W. Veterans Blvd.  
Palmview, TX 78572  
(956) 862-3257  
palmviewchamber@gmail.com  
www.palmviewchamber.com

**Port Isabel Chamber of Commerce**

421 Queen Isabella Blvd.  
Port Isabel, TX 78578  
(956) 943-2262 Fax: (956) 943-4001  
director@portisabel.org  
www.portisabelchamber.com

**RGV Partnership**

322 S. Missouri Ave. Weslaco, TX 78596  
(956) 968-3141 Fax: (956) 968-0210  
info@rgvpartnership.com  
www.rgvpartnership.com

**Raymondville Chamber of Commerce**

700 FM 3168  
Raymondville, TX 78580  
(956) 689-1860 Fax: (956) 689-1863  
chamber@granderiver.net

**Roma Chamber of Commerce**

77 Convent Avenue  
Roma, TX 78584  
(956) 849-4296  
lsandoval@cityofroma.net

**San Benito Chamber of Commerce**

223 S. Sam Houston Blvd.  
San Benito, TX 78586  
(956) 361-9111  
info@chamberofsanbenito.com  
www.chamberofsanbenito.com

**South Padre Island Chamber of Commerce**

610 Padre Blvd.  
South Padre Island, TX 78597  
(956) 761-4412 Fax: (956) 761-2739  
info@spichamber.com  
www.spichamber.com

**Weslaco Area Chamber of Commerce**

275 S. Kansas, Suite B.  
Weslaco, TX 78596  
(956) 968-2102 Fax: (956) 968-6451  
chamber@weslaco.com  
www.weslaco.com

**CONSTRUCTION, GENERAL****Aguaworks Pipe & Supply LLC**

2907 N. Central Ave.  
Brownsville, TX 78526  
(956) 831-2500 Fax: (956) 831-2525  
thomas.bennett@aguaworkspipe.com  
www.aguaworkspipe.com

**Alamo Concrete Products Ltd.**

600 Yard Road  
Brownsville, TX 78521  
(210) 208-1570  
ap@alamoconcrete.com

**Bryant Industrial Services LLC**

2600 Callaway Drive  
Brownsville, TX 78521  
(956) 838-5120 Fax: (956) 761-1255  
www.bryantindustrialservices.com

**Bougambillas Construction LLC**

1775 Central Blvd Suite B  
Brownsville, TX 78520  
(956) 541-1390  
bugconst@gmail.com  
www.bougambillasconstruction.com

**CEMEX Construction Materials**

3600 N. Chemical Road  
Brownsville, TX 78521  
(956) 386-1452  
www.cemexusa.com

**G & T Paving LLC**

2005 Mercedes Road  
Brownsville, TX 78520  
(956) 546-3673 Fax: (956) 546-5333  
gpavingco@gmail.com  
www.gntpaving.com

**Gallegos Electric Inc.**

5640 Cavazos Road  
Brownsville, TX 78526  
(956) 542-0058 Fax: (956) 548-1392  
gallegoselectricinc@gmail.com  
www.gallegoselectricinc.com

**Holt CAT**

10701 N. Highway 281  
Edinburg, TX 78541  
(956) 292-7900  
www.holtcat.com

## BUSINESS DIRECTORY

### Koncept Safety

7846 Fortune Drive  
San Antonio, TX 78250  
(210) 521-1980 Fax: (210) 684-5005  
sales@konceptsafty.com  
www.konceptsafty.com

### Magic Valley Concrete LLC

6265 FM 511  
Brownsville, TX 78521  
(956) 580-2502  
rufino@riovalleypipe.com  
www.mvconcrete.com

### Renoworks LLC.

2705 E. Davis Road, Suite A  
Edinburg, TX 78542  
(956) 513-1849  
rene@renoworks.com

### RM Walsdorf Inc.

4501 Bill Reed Rd  
Brownsville, TX 78521  
(956) 831-3984 Fax: (956) 831-4923  
kim@rmwalsdorf.com

### Raba Kistner

1244 Robinhood Drive, Suite 101  
Brownsville, TX 78521  
(956) 504-9777  
www.rkci.com

### Terracon Consultants Inc.

1506 Mid Cities Drive  
Pharr, TX 78577  
(956) 283-8254 Fax: (956) 283-8279  
stephanie.cardoza@terracon.com  
www.terracon.com

### Vulcan Construction Materials LP

10905 R.L. Ostos Road  
Brownsville, TX 78521  
(956) 831-8888  
farrard@vmcmail.com  
www.vulcanmaterials.com

### ZIWA Corporation

1952 S. Price Road  
Brownsville, TX 78526  
(956) 542-8167 Fax: (956) 986-2775  
sales@ziwacorporation.com  
www.ziwacorporation.com

## CONSTRUCTION, MARINE

### BC Equipment Sales Inc.

201 E. Expressway 83  
La Feria, TX 78559  
(956) 379-8664 or (956) 797-0072  
rvela@bc-equipment.com  
www.bcequipment.com

### Bryant Industrial Services LLC

2600 Callaway Drive  
Brownsville, TX 78521  
(956) 838-5120 Fax: (956) 761-1255  
bryantindustrial@yahoo.com  
www.bryantindustrialservices.com

### Conroe Wood Products Inc.

300 E. Stewart St.  
Willis, TX 77378  
(888) 636-3098 Fax: (936) 760-2975  
www.conroewoodproducts.com

### Epoxy Design Systems Inc.

5805 Centralcrest St., Suite A  
Houston, TX 77092  
(713) 461-8733 Fax: (281) 856-9909  
hank@epoxydesign.com  
www.epoxydesign.com

### Holt CAT

10701 N. Highway 281  
Edinburg, TX 78541  
(956) 292-7900  
www.holtcat.com

### Seatrium AmFELS Inc.

20000 State Hwy. 48  
Brownsville, TX 78521  
(956) 831-8220 Fax: (956) 831-6220  
www.seatrium.com

### SA Recycling/SteelCoast

16200 Joe Garza Sr. Road  
Brownsville, TX 78521  
(956) 509-2031 Fax: (956) 435-0068  
reception@sarecycling.com  
www.sarecycling.com

## CONSULATES

### British Consulate-General Houston

1301 Fannin, Suite 2400  
Houston, TX 77002  
(713) 210-4000  
www.gov.uk/government/world/  
organisations/british-consulate-  
general-houston

### French Consulate-General Houston

777 Post Oak Blvd., Suite 600  
Houston, TX 77056-3252  
(346) 272-5363  
info.houston.fslt@diplomatie.gouv.fr  
https://houston.consulfrance.org

### Mexican Consulate General Brownsville

301 Mexico Blvd, Suite F-2  
Brownsville, TX 78520  
(956) 542-4431  
Fax: (956) 542-7267  
conbrownsville@sre.gob.mx  
https://consulmex.sre.gob.mx/  
brownsville

### Royal Danish Consulate Williams Tower

2800 Post Oak Blvd, Suite 1910  
(713) 622-9018 Fax: (713) 275-0779  
hougkl@um.dk  
www.usa.um.dk

## CONSULTANTS, MARINE

### Brownsville Gulfside Warehouse Inc.

400 R.L. Ostos Road  
Brownsville, TX 78521  
(956) 831-4241 Fax: (956) 831-2200  
rsarquis@brownsvillegulfside.com  
www.dixshipping.com

### HDR Engineering Inc.

555 N. Carancahua, Suite 1600  
Corpus Christi, TX 78401-0850  
(361) 696-3300 Fax: (361) 696-3385  
www.hdrinc.com

## CONTAINERS

### Kuehne + Nagel

15450 Diplomatic Plaza  
Houston, TX 77032  
(281) 449-8888  
jim.mcneille@kuehne-nagel.com  
www.kuehne-nagel.com

### Mediterranean Shipping Company (MSC)

420 5th Ave. (at 37th St.), 8th floor  
New York, NY 1008-2702  
(212) 764-4800  
www.msc.com

### Terrier Transportation

4708 Fidelity  
Houston, TX 77029  
(956) 831-9954 Fax: (956) 831-9958  
mary.rivera@terriertran.com  
www.terriertran.com

## CRANE SERVICES & RIGGING

### All Star Metals LLC

101 Box Car Road  
Brownsville, TX 78521  
(956) 838-2110 Fax: (956) 838-2190  
www.allstarmetals.com

### BC Equipment Sales Inc.

201 E. Expressway 83  
La Feria, TX 78559  
(956) 379-8664 or (956) 797-0072  
rvela@bc-equipment.com  
www.bcequipment.com

### Brownsville Gulfside Warehouse Inc.

400 R.L. Ostos Road  
Brownsville, TX 78521  
(956) 831-4241 Fax: (956) 831-2200  
rsarquis@brownsvillegulfside.com  
www.dixshipping.com

### Dix Shipping Company Inc.

5500 R.L. Ostos Road  
Brownsville, TX 78521  
(956) 831-4228 Fax: (956) 831-8559  
lostos@dixshipping.com  
www.dixshipping.com

### Seatrium AmFELS Inc.

20000 State Hwy. 48  
Brownsville, TX 78521  
(956) 831-8220 Fax: (956) 831-6220  
www.seatrium.com

### Kuehne + Nagel

15450 Diplomatic Plaza  
Houston, TX 77032  
(281) 449-8888  
jim.mcneille@kuehne-nagel.com  
www.kuehne-nagel.com

### Plitt Crane & Rigging

2601 R.L. Ostos Road  
Brownsville, TX 78521  
(956) 831-4278 Fax: (956) 831-9626  
www.plittrigging.com

### Special Crane Services LLC

2601 N. Indiana Road  
Brownsville, TX 78521  
(956) 592-4469  
roxmonsivais@hotmail.com



## CUSTOMS BROKERS, U.S. LICENSED

### Border Customs Service

1280 Cheers Blvd.  
Brownsville, TX 78521  
(956) 548-0311 Fax: (956) 838-0107  
slopez@bordercustoms.com  
www.bordercustoms.com

### C & J Logistical Services Inc.

1921 Anei Circle, Suite D  
Brownsville, TX 78577  
(956) 214-5050 Fax: (956) 214-5055  
cnflores@cjlogistical.com  
www.cjlogistical.com

### DSV Air & Sea Inc.

1350 Cheers Blvd.  
Brownsville, TX 78521  
(956) 831-4222 Fax: (956) 831-2704  
olga.garcia@us.dsv.com  
www.us.dsv.com

### Daniel B. Hastings Inc.

3301 Nafta Parkway, Suite B  
Brownsville, TX 78526  
(956) 831-7555 Fax: (956) 831-7562  
sandrag@dastings.com  
www.dastings.com

### Livingston International

594 S. Vermillion Road  
Brownsville, TX 78521  
(956) 504-6440 Fax: (956) 504-2665  
jmartinez@livingstonintl.com  
www.livingstonintl.com

### Loera Customs Brokerage

5845 E. 14th St.  
Brownsville, TX 78521  
(956) 831-9000 Fax: (956) 831-4103  
minerva@loeracbi.com  
www.loeracbi.com

### Matthew J. Leyendecker

2700 R.L. Ostos Road  
Brownsville, TX 78521  
(956) 504-1700 Fax: (956) 369-5320  
matt@leyendeckerscs.com  
www.leyendeckerscs.com

### NAVCO Logistics

2500 Courage Blvd.  
Brownsville, TX 78521  
(956) 542-4138 Fax: (956) 544-2139  
jgriffin@navcologistics.com  
www.navcologistics.com

### Parker & Company

4694 Jaime Zapata Ave.  
Brownsville, TX 78521  
(956) 831-2000 Fax: (956) 831-4140  
fparker@parker-logistics.com  
www.parkerandcompany.com

### Philip T. Cowen CHB

500 E. Levee St. Brownsville, TX 78520  
(956) 541-6031 Fax: (956) 541-6872  
ptchb@att.net

### Port of Brownsville/Foreign Trade Zone No. 62

1000 Foust Road Brownsville, TX 78521  
(956) 831-4592 Fax: (956) 831-5006  
trodriguez@portofbrownsville.com  
www.portofbrownsville.com

portofbrownsville.com

### RARE Import-Export LLC

1705 Billy Mitchell Blvd.  
Brownsville, TX 78521  
(956) 504-3133 Fax (956) 541-8282  
apriladelgado@rareimport-exportlogistics.com  
www.rareimport-exportlogistics.com

### Ricardo Gonzalez Customs Broker LLC

7620 Victoria Court, Suite 2  
Brownsville, TX 78521  
(956) 831-9651 Fax: (956) 831-2740  
rgonzalez@itsbrownsville.com  
www.itsbrownsville.com

### Roser & Cowen Logistical Customs Service LTD

4695 Towerwood Dr.  
Brownsville, TX 78521  
(956) 831-8533 Fax: (956) 831-8615  
nroser@rosercowen.com  
www.rosercowen.com

### Roser Customs Service Inc.

400 E. 13th St.  
Brownsville, TX 78520  
(956) 546-5544 Fax: (956) 546-0276  
rroser@rosercustoms.com  
www.rosercustoms.com

### TCS Brokerage

174 Industrial Dr.  
Brownsville, TX 78521  
(956) 544-4575 Fax: (956) 544-6950  
martha@tcsbrokerage.com  
www.tcsbrokerage.com

### Transcontinental Distribution Services Inc.

2380 N. Indiana Ave.  
Brownsville, TX 78521  
(956) 832-0773 Fax: (956) 832-0838  
ltltrfbro@transmaritime.com  
www.transcontinentalinc.com

## DIVERS & MARINE SALVAGERS

### All Star Metals LLC

101 Box Car Rd. Brownsville, TX 78521  
(956) 838-2110 Fax: (956) 838-2190  
www.allstarmetals.com

### Marine Salvage & Services Inc.

416 W. South Shore Drive  
Port Isabel, TX 78578  
(956) 943-2648 Fax: (956) 943-4516  
billy@marineservice.us  
www.marineservice.us

## ECONOMIC DEVELOPMENT

### Alamo Economic Development Corporation

715 U.S. Business 83 Alamo, TX 78516  
(956) 787-6622 Fax: (956) 787-7766  
www.alamoedc.org

### Brownsville Community Improvement Corporation

1304 East Adams Street  
Brownsville, TX 78520  
(956) 382-7500  
www.brownsvilledc.org

### Donna Economic Development Corporation

127 S. Eighth St. Donna, TX 78537  
(956) 998-7233  
www.cityofdonna.org

### Edinburg Economic Development Corporation

415 W. University Dr. Edinburg, TX 78541  
(956) 388-8207 Fax: (956) 380-2738  
www.cityofedinburg.com/economic\_development/

### Elsa Economic Development Corporation

102 S. Diana St.  
Elsa, TX 78543  
(956) 262-2127 Fax: (956) 262-5002  
www.elsa@cityofelsa.net

### Greater Brownsville Incentives Corporation (GBIC)

500 E. Charles St.  
Brownsville, TX 78520  
(956) 561-4133  
www.greaterbrownsville.com

### Harlingen Economic Development Corporation

2424 Boxwood St., Suite 125  
Harlingen, TX 78550  
(956) 216-5081 Fax: (956) 216-2580  
www.harlingenedc.com

### La Feria Economic Development Corporation

115 E. Commercial Ave.  
La Feria, TX 78559  
(956) 797-2261 Fax: (956) 797-1899  
www.cityoflaferia.com

### La Joya Economic Development Corporation

701 E. Expressway 83  
La Joya, TX 78560  
(956) 581-7002 Fax: (956) 580-7000  
www.cityoflajoya.com

### McAllen Economic Development Corporation

6401 S. 33rd St.  
McAllen, TX 78503  
(956) 682-2875 Fax: (956) 382-3077  
www.mcallenedc.org

### Development Corporation of Mercedes

320 S. Ohio Ave.  
Mercedes, TX 78570  
(956) 565-2230  
www.mercedesedc.com

### Mission Economic Development Corporation

801 N. Bryan Road  
Mission, TX 78572  
(956) 585-0040  
www.missionedc.com

### Pharr Economic Development Corporation

1215 S. Cage Blvd.  
Pharr, TX 78577  
(956) 402-4332 Fax: (956) 475-3449  
www.pharredc.com

## BUSINESS DIRECTORY

### Port of Brownsville

1000 Foust Road  
Brownsville, TX 78521  
(956) 831-4592 or 800-978-5395  
www.portofbrownsville.com

### RGV Partnership

322 S. Missouri Ave.  
Weslaco, TX 78596  
(956) 968-3141 Fax: (956) 968-0210  
www.rgvpartnership.com

### Raymondville Economic Development Corporation

700 FM 3168 Raymondville, TX 78580  
(956) 689-1860 Fax: (956) 689-1863  
www.raymondvilletx.us

### Rio Grande City Economic Development Corporation

5332 E. U.S. Hwy. 83, Ste. B  
Rio Grande City, TX 78582  
(956) 487-3476 Fax: (956) 317-1580  
www.rgcedc.com

### San Benito Economic Development Corporation

701 North Bowie Street,  
San Benito, TX 78586  
(956) 361-3800 Ext. 304  
Fax: (956) 361-3805  
www.sanbenitoedc.us

### San Juan Economic Development Corporation

905 W. First St. Ste. D  
San Juan, TX 78537  
(956) 516-3897 Fax: (956) 685-0139  
www.sanjuanedc.com

### South Padre Island Economic Development Corporation

6801 Padre Island Blvd.  
South Padre Island, TX 78597  
(956) 761-6805 Fax: (956) 761-4523  
www.southpadreislandedc.com

### Sullivan City Economic Development Corporation

500 S. Cenizo Sullivan City, TX 78595  
(956) 485-2828 Fax (956) 485-9551

### Texas Economic Development Corporation

P.O. Box 684702  
Austin, TX 78711-2428  
(512) 981-6736 Fax: (512) 936-0080  
www.businessintexas.com

### Weslaco Economic Development Corporation

275 S. Kansas Ave., Suite A  
Weslaco, TX 78596  
(956) 969-0838  
weslacoedc@gmail.com  
www.weslacoedc.com

## ELECTRICAL SERVICES

### AEP Texas

355 W. Hwy. 77 San Benito, TX 78586  
(956) 361-2088 Fax : (956) 361-2090  
dlucio@aep.com  
www.aeptexas.com

### AP Sensing Americas LP

13280 NW Freeway, Suite F, #355  
Houston, TX 77040  
(281) 304-0128  
Fax: (281) 256-2392  
rich.holeman@apsensing.com  
www.apsensing.com

### Brownsville Public Utilities Board (BPUB)

1425 Robinhood Drive  
Brownsville, TX 78521  
(956) 982-6100 Fax: (956) 983-6289  
www.brownsville-pub.com

### Magic Valley

**Electric Cooperative**  
1 ¾ Mi W. Hwy. 83 Mercedes, TX 78570  
(866) 225-5683  
www.magicvalley.coop

### Sharyland Distribution & Transmission Services LLC

1807 Ross Ave., Suite 460  
Dallas, TX 75201  
(214) 978-8351  
bbeverly@sharyland.com

### South Texas Electric Cooperative Inc.

P. O. Box 119 Nursery, TX 77976  
(956) 377-7125  
mbautista@stec.org  
www.stec.org

## ELECTRONICS, MARINE

### AP Sensing Americas LP

13280 NW Freeway, Suite F, #355  
Houston, TX 77040  
(281) 304-0128  
Fax: (281) 256-2392  
rich.holeman@apsensing.com  
www.apsensing.com

### Seatrium AmFELS, Inc.

20000 State Hwy. 48  
Brownsville, TX 78521  
(956) 831-8220 Fax: (956) 831-6220  
www.seatrium.com

## ENGINEERING, MARINE

### AP Sensing Americas LP

13280 NW Freeway, Suite F, #355  
Houston, TX 77040  
(281) 304-0128 Fax: (281) 256-2392  
www.apsensing.com

### Back Up Solutions

619 Artisan Way  
San Antonio, TX 78260  
(956) 342-0506  
rubmart@msn.com

### Gonzalez Engineering & Surveying Inc.

153 E. Price Road  
Brownsville, TX 78521  
(956) 546-5515 Fax: (956) 546-2804  
edmundog@gonzalezengineering.com

### Half Associates Inc.

1075 Paredes Line Road, Suite B  
Brownsville, TX 78521  
(956) 303-7100  
jclint@half.com  
www.half.com

### HDR Engineering Inc.

555 N. Carancahua, Suite 1600  
Corpus Christi, TX 78401-0850  
(361) 696-3300 Fax: (361) 696-3385  
jeffrey.massengill@hdrinc.com  
www.hdrinc.com

### Seatrium AmFELS Inc.

20000 State Hwy. 48  
Brownsville, TX 78521  
(956) 831-8220 Fax: (956) 831-6220  
www.seatrium.com

### Mejia & Rose Inc.

1643 W. Price Road  
Brownsville, TX 78520  
(956) 544-3022 Fax: (956) 544-3068  
mandrinc@cngmail.com  
www.mejiarose.com

## ENVIRONMENTAL & GEOTECHNICAL ENGINEERING

### AP Sensing Americas LP

13280 NW Freeway, Suite F, #355  
Houston, TX 77040  
(281) 304-0128 Fax: (281) 256-2392  
rchtax@aol.com  
www.apsensing.com

### Fugro (USA) Inc.

6100 Hillcroft Ave.  
Houston, TX 77081  
(713) 369-5600 Fax: (713) 346-4054  
www.fugro.com

### HDR Engineering Inc.

555 N. Carancahua, Suite 1600  
Corpus Christi, TX 78401-0850  
(361) 696-3300 Fax: (361) 696-3385  
jeffrey.massengill@hdrinc.com  
www.hdrinc.com

### Intertek-PSI

2020 North Loop 499, Suite 302  
Harlingen, TX 78550  
(956) 423-6826 Fax: (956) 423-5735  
raymundo.martinez@intertek.com  
www.intertek.com/building

### MEG Engineers

1221 E. Tyler Ave.  
Harlingen, TX 78550  
(956) 702-8500 Fax: (956) 702-4180  
megengineers.com

### Millennium Engineers Group

1221 E. Tyler Ave.  
Harlingen, TX 78550  
(956) 702-8500 Fax: (956) 702-4180  
apalma@megenineers.com  
www.megengineers.com

### Pile Dynamics Inc.

30725 Aurora Road  
Cleveland, OH 44139  
(623) 580-8990 or (956) 579-1364

### Raba Kistner

1244 Robinhood Drive, Suite 101  
Brownsville, TX 78521  
(956) 682-5332  
iarjona@rkci.com  
www.rkci.com



**RO Engineering, PLLC.**  
2705 E. Davis Road, Suite A  
Edinburg, TX 78542  
(956) 513-1849  
r.olivarez@ro-engineering.com  
www.ro-engineering.com

**Terracon Consultants Inc.**  
1506 Mid Cities Drive  
Pharr, TX 78577  
(956) 283-8254 Fax: (956) 283-8279  
stephanie.cardoza@terracon.com  
www.terracon.com

### ENVIRONMENTAL CLEANUP

**All Star Metals LLC**  
101 Box Car Road  
Brownsville, TX 78521  
(956) 838-2110 Fax: (956) 838-2190  
www.allstarmetals.com

**BC Equipment Sales Inc.**  
201 E. Expressway 83  
La Feria, TX 78559  
(956) 379-8664 or (956) 797-0072  
rcuevas@bc-equipment.com  
www.bcequipment.com

**RGV Pump & Equipment LLC dba Oil Runners**  
940 Anzalduas Drive  
San Benito, TX 78586  
(956) 399-1400 Fax: (210) 855-8870  
rgvpumps@aol.com

**RM Walsdorf Inc.**  
4501 Bill Reed Rd  
Brownsville, TX 78521  
(956) 831-3984 Fax: (956) 831-4923  
kim@rmwalsdorf.com

**Terracon Consultants Inc.**  
1506 Mid Cities Drive  
Pharr, TX 78577  
(956) 283-8254 Fax: (956) 283-8279  
stephanie.cardoza@terracon.com  
www.terracon.com

### EQUIPMENT & SUPPLIES, MARINE

**Action Supply**  
5513 Norments Street  
Houston, TX 77039  
(281) 315-3841  
www.actionsupplyinc.com

**AP Sensing Americas LP**  
13280 NW Freeway, Suite F, #355  
Houston, TX 77040  
(281) 304-0128 Fax: (281) 256-2392  
rich.holeman@apsensing.com  
www.apsensing.com

**BC Equipment Sales Inc.**  
201 E. Expressway 83  
La Feria, TX 78559  
(956) 379-8664 or (956) 797-0072  
rvela@bc-equipment.com  
www.bcequipment.com

**Back Up Solutions**  
619 Artisan Way  
San Antonio, TX 78260  
(956) 342-0506  
rubmart@msn.com

[portofbrownsville.com](http://portofbrownsville.com)

**Dix Shipping Company Inc.**  
5500 R.L. Ostos Road  
Brownsville, TX 78521  
(956) 831-4228 Fax: (956) 831-8559  
lostos@dixshipping.com  
www.dixshipping.com

**Equipment Depot**  
900 W. Expressway 83  
Donna, TX 78537  
(956) 461-5858 Fax: (956) 464-5844  
javier.escamilla@eqdepot.com  
www.equipmentdepot.com

**Holt CAT**  
10701 N. Highway 281  
Edinburg, TX 78541  
(956) 292-7900  
www.holtcat.com

**Nuga Diesel Truck Parts**  
3300 E. 14th St.  
Brownsville, TX 78521  
(956) 541-7169 Fax: (956) 541-7317  
tanyanunez@nugadiesel.com  
www.nugadiesel.com

**Pile Dynamics Inc.**  
30725 Aurora Road  
Cleveland, OH 44139  
(623) 580-8990 or (956) 579-1364

**Rodco Marine Supply Inc.**  
1750 Anglers Place Road  
Brownsville, TX 78521  
(956) 831-8271 Fax: (956) 831-9550  
rodco@rodcomarine.com  
www.rodcomarine.com

**Shallow Water Marine**  
20005 State Hwy. 48  
Brownsville, TX 78521  
(956) 240-4084

**Zimco Marine LLC**  
1430 Everglades Road  
Brownsville, TX 78521  
(956) 831-7828 Fax: (956) 831-0135

### EXPORT PACKING & RIGGING

**Brownsville Gulfside Warehouse Inc.**  
400 R.L. Ostos Road  
Brownsville, TX 78521  
(956) 831-4241 Fax: (956) 831-2200

**CSC Sugar LLC**  
36 Grove St.  
New Canaan, CT 06840  
(203) 846-5610  
sales@cscsugar.com  
www.cscsugar.com

**Dix Shipping Company Inc.**  
5500 R.L. Ostos Road  
Brownsville, TX 78521  
(956) 831-4228 Fax: (956) 831-8559  
lostos@dixshipping.com  
www.dixshipping.com

**Gulf Stream Marine Inc.**  
2700 R.L. Ostos Road  
Brownsville, TX 78521  
(956) 831-6766 Fax: (956) 831-6763  
info@gulfstreammarine.com  
www.gulfstreammarine.com

**Kuehne + Nagel**  
15450 Diplomatic Plaza  
Houston, TX 77032  
(281) 449-8888  
jim.mcneille@kuehne-nagel.com  
www.kuehne-nagel.com

**Panalpina Inc.**  
19409 Kenswick Drive  
Humble, TX 77338  
(281) 446-0600 Fax: (281) 548-7553  
carol.fox@panalpina.com  
www.panalpina.com

**Texan Cement**  
3801 Foust Road  
Brownsville, TX 78521  
(956) 838-9115  
jquintanilla@texacement.com  
www.texacement.com

### FLOATING DRY DOCK

**Seatrium AmFELS Inc.**  
20000 State Hwy. 48  
Brownsville, TX 78521  
(956) 831-8220 Fax: (956) 831-6220  
www.seatrium.com

### FOREIGN TRADE ZONE

**Brownsville South Padre Island International Airport**  
700 Amelia Earhart Drive  
Brownsville, TX 78521  
(956) 542-4373  
flybrownsville@cob.us  
www.flybrownsville.com

**Bluewing One LLC**  
11700 Old Hwy. 48  
Brownsville, TX 78521  
(713)515-4288  
dmalone@bluewingmidstream.com  
www.bluewingone.com

**Bluewing Royal LLC**  
1005 Anchor Road/  
Old State Highway 48  
Brownsville, TX 78521  
(713)515-4288  
dmalone@bluewingmidstream.com  
www.bluewingone.com

**Brownsville Gulfside Warehouse Inc.**  
400 R.L. Ostos Road  
Brownsville, TX 78521  
(956) 831-4241 Fax: (956) 831-2200  
rsarquis@brownvillegulfside.com  
www.dixshipping.com

**Interlube Corporation Inc.**  
750 W. Anchor Road  
Brownsville, TX 78521  
(956) 831-7046  
www.interlubecorp.com

**Seatrium AmFELS Inc.**  
20000 State Hwy. 48  
Brownsville, TX 78521  
(956) 831-8220 Fax: (956) 831-7498  
www.seatrium.com

## BUSINESS DIRECTORY

**Loera Customs Brokerage Inc.**  
5845 E. 14th St.  
Brownsville, TX 78521  
(956) 831-9000 Fax: (956) 831-4103  
minerva@loeracbi.com  
www.loeracbi.com

**Motus M1 Terminals**  
14301 R.L. Ostos Road  
Brownsville, TX 78521  
(210) 298-2222  
hrivera@motus.energy  
www.motus.energy

**Parker & Company**  
605-A Vermillion Road  
Brownsville, TX 78521  
(956) 831-2000 Fax: (956) 831-4140  
www.parkerandcompany.com

**Parker & Company  
NAFTA Site**  
3301 NAFTA Parkway Suite B  
Brownsville, TX 78521  
(956) 831-2000 Fax: (956) 831-4140  
www.parkerandcompany.com

**Port of Brownsville FTZ No. 62**  
1000 Foust Road  
Brownsville, TX 78521  
(956) 831-4592 Fax: (956) 831-5006  
trodriguez@portofbrownsville.com  
www.portofbrownsville.com

**TransMontaigne Operating  
Company LP**  
10150 Old Hwy. 48 South  
Brownsville, TX 78521  
(956) 831-3531 Fax: (956) 831-3870  
lrivera@transmontaigne.com  
www.transmontaigne.com

**Panasonic (FINSA-Los Indios)**  
1101 Joaquin Cavazos Blvd  
Los Indios, TX 78567  
(956) 365-7700

### FREIGHT CONSOLIDATORS/NVOCCS

**Gulf Stream Marine Inc.**  
2700 R.L. Ostos Road  
Brownsville, TX 78521  
(956) 831-6766  
info@gulfstreammarine.com  
www.gulfstreammarine.com

**Kuehne + Nagel**  
15450 Diplomatic Plaza  
Houston, TX 77032  
(281) 449-8888  
jim.mcneille@kuehne-nagel.com  
www.kuehne-nagel.com

**Panalpina Inc.**  
19409 Kenswick Drive  
Humble, TX 77338  
(281) 446-0600 Fax: (281) 548-7553  
carol.fox@panalpina.com  
www.panalpina.com

### FREIGHT FORWARDERS

**Kuehne + Nagel**  
15450 Diplomatic Plaza  
Houston, TX 77032  
(281) 449-8888  
jim.mcneille@kuehne-nagel.com  
www.kuehne-nagel.com

**Panalpina Inc.**  
19409 Kenswick Drive  
Humble, TX 77338  
(281) 446-0600 Fax: (281) 548-7553  
carol.fox@panalpina.com  
www.panalpina.com

**Parker & Company**  
4694 Jaime Zapata Ave.  
Brownsville, TX 78521  
(956) 831-2000 Fax: (956) 831-4140  
fparker@parker-logistics.com  
www.parkerandcompany.com

**Roser & Cowen Logistical Customs  
Services LTD**  
4695 Towerwood Drive  
Brownsville, TX 78521  
(956) 831-8533  
nroser@rosercowen.com  
www.rosercowen.com

### GOVERNMENTAL AGENCIES

**Brownsville Public Utilities Board  
(BPUB)**  
1425 Robinhood Drive  
Brownsville, TX 78521  
(956) 983-6100 Fax: (956) 983-6289  
www.brownsville-pub.com

**Cameron County International Bridge  
System**  
3310 S. Expressway 77  
Brownsville, TX 78521  
(956) 574-8771 Fax: (956) 574-8778  
RSPCA@co.cameron.tx.us  
www.co.cameron.tx.us

**Cameron County Regional Mobility  
Authority (CCRMA)**  
3461 Carmen Ave.  
Rancho Viejo, TX 78575  
(956) 621-5571 Fax: (956) 621-5590  
info@ccrma.org  
www.ccrma.org

**Cameron County Sheriff's Office**  
7300 Old Alice Road Olmito, TX 78575  
(956) 554-6700  
www.co.cameron.tx.us

**City of Brownsville**  
1001 E. Elizabeth St.  
Brownsville, TX 78520  
(956) 546-HELP (4357)  
www.cob.us

**Pharr International Bridge**  
9900 S. Cage Blvd. Pharr, TX 78577  
(956) 402-4660 Fax: (956) 223-2013  
luis.bazan@pharr-tx.gov  
www.pharrbridge.com

**Port of Brownsville**  
1000 Foust Road Brownsville, TX 78521  
(956) 831-4592 or 800-978-5395  
www.portofbrownsville.com

**Port Isabel-San Benito Navigation  
District**  
250 Industrial Drive  
Port Isabel, TX 78578  
(956) 943-7826  
sbearden@pisbnd.com  
www.portofportisabel.com

**U.S. Coast Guard MSD Brownsville**  
(956) 832-0517  
www.uscg.mil/d8/sectcorpuschristi

### GRAIN ELEVATOR

**West Plains LLC**  
9155 R.L. Ostos Road  
Brownsville, TX 78521  
(832) 413-2466  
www.westplainsllc.com

### HARBOR MASTER OFFICE

**Mike Davis, Harbor Master**  
400 Windhaus Road  
Brownsville, TX 78521  
(956) 831-8256 Fax: (956) 831-3085  
mdavis@portofbrownsville.com  
www.portofbrownsville.com

**Carlos Martinez,  
Assistant Harbor Master**  
400 Windhaus Road  
Brownsville, TX 78521  
(956) 831-8256 Fax: (956) 831-3085  
cmartinez@portofbrownsville.com  
www.portofbrownsville.com

### HIGHER EDUCATION INSTITUTIONS

**Our Lady of the Lake University Rio  
Grande Valley Campus**  
1650 S. Main/P.O. Box 420  
La Feria, TX 78559  
(956) 277-0146  
www.ollusa.edu

**South Texas College**  
400 N. Border Weslaco, TX 78596  
(855) 468-6782  
www.southtexascollege.edu

**Texas A&M University Higher  
Education Center at McAllen**  
6200 Tres Lagos Blvd.  
McAllen, TX 78504  
(956) 271-1300  
www.mcallen.tamu.edu

**Texas A&M University-Kingsville  
700 University Blvd**  
Kingsville, TX 78363  
(361) 593-2111  
www.tamuk.edu

**Texas Southmost College**  
80 Fort Brown Brownsville, TX 78520  
(956) 295-3600  
www.tsc.edu

**Texas State Technical College**  
1902 N. Loop 499 Harlingen, TX 78550  
(800) 852-8784  
www.tstc.edu

**The University of Texas Rio Grande  
Valley Brownsville Campus**  
One West University Blvd.  
Brownsville, TX 78520

**Edinburg Campus**  
1201 West University Dr.  
Edinburg, TX 78539  
www.utrgv.edu



## HOTELS

**Beach Resort at South Padre Island**  
100 Padre Island Blvd  
South Padre Island, TX 78597  
(956) 426-9066  
www.beachresortspi.com

**Courtyard by Marriott Brownsville**  
3955 N. Expressway  
Brownsville, TX 78520  
(956) 350-4600  
www.marriott.com

**Fairfield Inn & Suites by Marriott, Brownsville North**  
804 E. Morrison Rd  
Brownsville, Texas 78526  
956-667-5278 Fax: (956) 621-1840  
www.brownsvillefairfield.com

**Hampton Inn & Suites Brownsville**  
3000 N. Expressway  
Brownsville, TX 78526  
(956) 548-0005  
www.hamptoninn3.hilton.com

**Holiday Inn**  
651 Sunrise Blvd.  
Brownsville, TX 78526  
(956) 541-3332 Fax: (956) 621-2993  
https://www.ihg.com/

**Homewood Suites by Hilton Brownsville**  
3759 N. Expressway  
Brownsville, TX 78520  
(956) 574-6900  
www.homewoodsuites3.hilton.com

**La Quinta Inn & Suites Brownsville North**  
5051 N. Expressway  
Brownsville, TX 78520  
(956) 350-2118  
www.laquintabrownsvillenorth.com

**Pearl South Padre Resort**  
310 Padre Blvd.  
South Padre Island, TX 78597  
(956) 761-6551  
www.pearlsouthpadre.com

**Residence Inn by Marriott**  
3975 N. Expressway  
Brownsville, TX 78520  
(956) 350-8100  
www.marriott.com/hotels/travel/brori-residence-inn-brownsville/

**Staybridge Suites**  
2900 Pablo Kisel Blvd.  
Brownsville, TX 78526  
(956) 504-9500 Fax: (956) 504-9584  
info-brownsville@ascensionmgt.com  
www.staybridge.com/brown

**Texas Inn Brownsville**  
845 N. Expressway  
Brownsville, TX 78520  
(956) 542-5501  
www.hotelbrownsvilletexas.com

[portofbrownsville.com](http://portofbrownsville.com)

**Quality Inn**  
7051 S. Padre Island Hwy.  
Brownsville, TX 78526  
(956) 621-3299

## INSURANCE, CARGO

**Parker & Company**  
4694 Jaime Zapata Ave.  
Brownsville, TX 78521  
(956) 831-2000 Fax: (956) 831-4140  
fparker@parker-logistics.com  
www.parkerandcompany.com

**Roser & Cowen Logistical Customs Services LTD**  
4695 Towerwood Drive  
Brownsville, TX 78521  
(956) 831-8533  
nrosier@rosercowen.com  
www.rosercowen.com

## INSURANCE, MARINE

**Kuehne + Nagel**  
15450 Diplomatic Plaza  
Houston, TX 77032  
(281) 449-8888  
jim.mcneille@kuehne-nagel.com  
www.kuehne-nagel.com

**Parker & Company**  
4694 Jaime Zapata Ave.  
Brownsville, TX 78521  
(956) 831-2000 Fax: (956) 831-4140  
fparker@parker-logistics.com  
www.parkerandcompany.com

## LABOR ORGANIZATIONS

**International Longshoremen's Association #2995**  
8150 Padre Island Hwy.  
Brownsville, TX 78521  
(956) 831-4133

**West Gulf Maritime Association (WGMA)**  
1717 Turning Basin Drive #200  
Houston, TX 77024  
(713) 678-7665 Fax: (855) 715-1717  
robert@wgma.org  
www.wgma.org

## LINE HANDLERS

**Brownsville Mooring**  
454 Lindale Drive  
Brownsville, TX 78521  
(956) 551-4735 Fax: (956) 443-0050

**M & M Mooring & Marine Services**  
2700 R.L. Ostos Road  
Brownsville, TX 78521  
(956) 371-2476  
markclive67@hotmail.com  
www.mm-mooringmarineservices.com

## MACHINING & FABRICATING

**Back Up Solutions**  
619 Artisan Way  
San Antonio, TX 78260  
(956) 342-0506  
rubmart@msn.com

**Seatrium AmFELS Inc.**  
20000 State Hwy. 48  
Brownsville, TX 78521  
(956) 831-8220 Fax: (956) 831-6220  
www.seatrium.com

**Port Fabricator**  
20000 St. Hwy 48  
Brownsville, TX 78521  
(956) 831-7557 Fax: (956) 831-7594  
jrevuelta@portfabricators.com

**Zimco Marine LLC**  
1430 Everglades Road  
Brownsville, TX 78521  
(956) 831-7828 Fax: (956) 831-0135  
gwlzimco@aol.com

## MINERALS

**905/BMW Inc.**  
4501 N. Mineral Loop  
Brownsville, TX 78521  
(956) 832-0280  
april@905logistics.com  
www.905logistics.com

**Allied Mineral Products Inc.**  
3025 Mineral Loop  
Brownsville, TX 78521  
(956) 831-2022  
mdj@alliedmin.com

**Gulf Facilities Inc.**  
4201 Foust Road  
Brownsville, TX 78521  
(956) 831-4007 Fax: (956) 831-9751  
info@schaeferstevedoring.com  
www.gulf-facilities.com

**CEMEX Construction Materials**  
3600 N. Chemical Road  
Brownsville, TX 78521  
(956) 386-1452  
www.cemexusa.com

**Vulcan Construction Materials LP**  
10905 R.L. Ostos Road  
Brownsville, TX 78521  
(956) 831-8888  
farrard@vmcmail.com  
www.vulcanmaterials.com

## MISCELLANEOUS

**905/BMW Inc.**  
4501 N. Mineral Loop  
Brownsville, TX 78521  
(956) 832-0280  
april@905logistics.com  
www.905logistics.com

**A-Mex Financial Services**  
17755 State Hwy. 48  
Brownsville, TX 78521  
(956) 544-5000  
a-mex@sbcglobal.net

**AP Sensing Americas LP**  
13280 NW Freeway, Suite F, #355  
Houston, TX 77040  
(281) 304-0128 Fax: (281) 256-2392  
rich.holeman@apsensing.com  
www.apsensing.com

## BUSINESS DIRECTORY

### **Aguaworks Pipe & Supply LLC**

2907 N. Central Ave.  
Brownsville, TX 78526  
(956) 831-2500 Fax: (956) 831-2525  
thomas.bennett@aguaworkspipe.com  
www.aguaworkspipe.com

### **Alamo Concrete Products Ltd.**

600 Yard Road  
Brownsville, TX 78521  
(210) 208-1570  
awalsh@alamocement.com

### **American Oxygen Company**

11700 State Hwy. 48  
Brownsville, TX 78521  
52-844-4390707  
wheelock@aocgas.com

### **Amspec LLC**

1700 R.L. Ostos Road  
Brownsville, TX 78521  
(956) 433-2511  
Brownsville@amspecgroup.com  
www.amspecllc.com

### **Austin Star Detonator Co.**

5755 N. Cantu Road  
Brownsville, TX 78521  
(956) 831-7751  
ignacio.reyes@austinpowder.com  
www.austinpowder.com

### **BC Equipment Sales Inc.**

201 E. Expressway 83  
La Feria, TX 78559  
(956) 379-8664 or (956) 797-0072  
rvela@bc-equipment.com  
www.bcequipment.com

### **Back Up Solutions**

619 Artisan Way  
San Antonio, TX 78260  
(956) 342-0506  
rubmart@msn.com

### **Ben's Glass & Metal**

1125-A E. 13th St.  
Brownsville, TX 78520  
(956) 546-1236 Fax: (956) 574-0523  
bensglass1125@gmail.com

### **Cameron County International Bridge System**

3310 S. Expressway 77  
Brownsville, TX 78521  
(956) 574-8771 Fax: (956) 574-8778  
RSPCA@co.cameron.tx.us  
www.co.cameron.tx.us

### **CSC Sugar**

8700 Old Highway 48  
Brownsville, TX 78521  
(956) 328-7851  
nrodriguez@cscsugar.com  
www.cscsugar.com

### **Diesel Fuel Injection Inc.**

6918 Padre Island Hwy.  
Brownsville, TX 78521  
(956) 831-4744  
Fax: (956) 831-9473  
pmiddlediesel@gmail.com

### **Duro Bag/Novolex**

3401 David Shore Drive  
Brownsville, TX 78521  
(956) 831-4209 Fax: (956) 831-2112  
www.novolex.com

### **Edwards Abstract and Title Co.**

1075 Paredes Line Road  
Brownsville, TX 78526  
(956) 542-6777  
brownsville@edwardsabstract.co  
www.edwardsabstract.com

### **Epoxy Design Systems Inc.**

5805 Centralcrest St., Suite A  
Houston, TX 77092  
(713) 461-8733 Fax: (281) 856-9909  
hank@epoxydesign.com  
www.epoxydesign.com

### **Estrada Hinojosa & Company, Inc.**

1717 Main Street LB 47, Suite 470  
Dallas, TX 75201  
(214) 658-1670 Fax: (214) 292-8849  
info@ehmuni.com  
www.estradahinojosa.com

### **Express Employment Professionals**

954 West Price Road  
Brownsville, TX 78521  
(956) 550-8510  
www.expresspros.com

### **Fortune Ferrous Inc.**

21301 R.L. Ostos Road  
Brownsville, TX 78521  
(956) 982-0205  
stevenmckeag@fortunegroup.net

### **Forza Steel**

40881 State Hwy. 48  
Brownsville, TX 78521  
www.forzasteel.com

### **H & H Oil**

7941 Recycle Drive  
Corpus Christi, TX 78409  
(361) 289-5220 Fax: (361) 289-6304  
chanceb@hhrecycling.com  
www.hhrecycling.com

### **Hi-Tech Welding Institute**

9675 Joe G. Garza, Sr. Rd.  
Brownsville, TX 78521  
(956) 543-9762  
hitechwi@aol.com

### **Holt CAT**

10701 N. Highway 281  
Edinburg, TX 78541  
(956) 292-7900  
www.holtcat.com

### **Intercoastal Salvage Inc.**

6915 FM 511 Brownsville, TX 78526  
(956) 831-8661  
nancygaytan10@gmail.com

### **International Seafarer Center**

220 W. Windhaus Road  
Brownsville, TX 78521  
(956) 371-6039  
palbro05@gmail.com  
www.brownsvilseafarer.com

### **Koncept Safety**

7846 Fortune Dr. San Antonio, TX 78250  
(210) 521-1980 Fax: (210) 684-5005  
sales@konceptsafety.com  
www.konceptsafety.com

### **Loma Alta Skeet & Trap Inc.**

500 Old Port Isabel Road  
Brownsville, TX 78521  
(956) 371-6162  
joe.paredes@yahoo.com

### **Lupe's Wrecker Service**

6725 Portway Drive  
Brownsville, TX 78521  
(956) 831-4188 Fax: (956) 831-9488  
lupeswrecker14@yahoo.com

### **Magic Valley Concrete LLC**

6265 FM 511  
Brownsville, TX 78521  
(956) 580-2502  
rufino@riovalleypipe.com  
www.mvconcrete.com

### **Oil Patch Fuel & Supply Inc.**

1905 Bayou Court  
Brownsville, TX 78521  
(956) 831-4839  
frank@oilpatchfuelsupply.com  
www.oilpatchfuelsupply.com

### **PeopleReady**

2045 E. Price Road Suite 1  
Brownsville, TX 78521  
(956) 982-1443  
www.peopleready.com

### **Pharr International Bridge**

9900 S. Cage Blvd.  
Pharr, TX 78577  
(956) 402-4660 Fax: (956) 223-2013  
luis.bazan@pharr-tx.gov  
www.pharrbridge.com

### **Pile Dynamics Inc.**

30725 Aurora Road  
Cleveland, OH 44139  
(623) 580-8990 or (956) 579-1364  
sgranger5357@gmail.com

### **Quality Weighing Services Inc.**

875 N. Milo Road  
Brownsville, TX 78521  
(956) 831-8253 Fax: (956) 831-8649  
qualityweighing@att.net

### **Quantum-Mechanical Contractors LLC.**

2705 E. Davis Road, Suite A  
Edinburg, TX 78542  
(956) 513-1849  
quantum.mcon@gmail.com

### **R&D Personnel**

4409 N. 22nd St. McAllen, TX 78504  
(956) 971-0152 Fax: (956) 971-0258  
recruit@rdpersonnel.com  
www.rdpersonnel.com

### **Renoworks LLC.**

2705 E. Davis Road, Suite A  
Edinburg, TX 78542  
(956) 513-1849  
rene@renoworks.com



**RM Walsdorf Inc.**

4501 Bill Reed Rd  
Brownsville, TX 78521  
(956) 831-3984 Fax: (956) 831-4923  
kim@rmwalsdorf.com

**RescueGear Inc.**

5909 Burnet Road  
Austin, TX 78757  
(800) 321-8022 Fax: (512) 451-4607  
jamie@rescuegear.com  
www.rescuegear.com

**Rio Grande LNG LLC**

1000 Louisiana Street Suite 3900  
Houston, Texas, USA 77002  
(713) 574-1880 Fax: (713) 574-1880  
info@riograndelng.com  
www.riograndelng.com

**Rodicel Inc.**

2685 N. Indiana Ave.  
Brownsville, TX 78526  
(956) 832-0995  
mora@rodicel.com

**RO Engineering, PLLC.**

2705 E. Davis Road, Suite A  
Edinburg, TX 78542  
(956) 513-1849  
r.olivarez@ro-engineering.com  
www.ro-engineering.com

**ST Marine**

3210 Dry Dock St. Brownsville, TX 78521  
(956) 831-7557 Fax: (956) 831-7594  
jrevuelta@portfabricators.com

**SOLICE – Full Color Digital Signs**

7200 Bonham Road  
Brownsville, TX 78521  
(956) 266-3018 Fax: (956) 831-2157  
solice2000@yahoo.com  
www.solice2000.com

**T.D. American Limestone Products LLC**

9805 Old Hwy. 48  
Brownsville, TX 78521  
(956) 336-9261  
mjimenez@grupotreda.com

**TCS Brokerage**

174 Industrial Drive  
Brownsville, TX 78521  
(956) 544-4575 Fax: (956) 544-6950  
martha@tcsbrokerage.com  
www.tcsbrokerage.com

**Taqueria Sylos**

4200 R.L. Ostos Road  
Brownsville, TX 78521  
(956) 346-0430

**Texan Cement**

3801 Foust Road Brownsville, TX 78521  
(956) 838-9115  
jquintanilla@texancement.com  
www.texancement.com

**Texas LNG LLC**

2800 North Loop West, Suite 910  
Houston, TX 77092  
(832) 849-4920  
info@txlng.com  
www.txlng.com

[portofbrownsville.com](http://portofbrownsville.com)

**Texas Marine Ventures Inc.**

13401 State Hwy. 48  
Brownsville, TX 78521  
(956) 943-1435  
jsalazar64@rgv.rr.com

**The Port Occupational and Medical Clinic.**

12161 State Hwy. 48  
Brownsville, TX 78521  
(956) 541-5231  
diazholdings@icloud.com  
www.theportclinic.com

**Valley Grocers LLC**

634 E Fronton St.  
Brownsville, TX 78521  
(956) 542-3576  
info@valleygrocers.com  
www.valleygrocers.com

**Vulcan Construction Materials LP**

10905 R.L. Ostos Road  
Brownsville, TX 78521  
(956) 831-8888  
farrard@vmcmail.com  
www.vulcanmaterials.com

**Wolfe Sandblasting & Industrial Painting**

1800 Bayou Court  
Brownsville, TX 78521  
(956) 312-1065  
wolfesandblasting@att.net

**PILOTAGE****Brazos Santiago Pilots**

P. O. Box 414  
Port Isabel, TX 78578  
(956) 943-3680  
www.brazossantiagopilots.com

**PIPELINE OPERATOR****Bryant Industrial Services LLC**

2600 Callaway Drive  
Brownsville, TX 78521  
(956) 838-5120 Fax: (956) 761-1255  
bryantindustrial@yahoo.com  
www.bryantindustrialservices.co

**Diamondback Pipeline LLC**

1670 Broadway, Suite 3100  
Denver, CO 80202  
(956) 831-3531  
kgarcia@transmontaigne.com

**Interlube Corp. Inc.**

750 N. Anchor Road  
Brownsville, TX 78521  
(956) 831-7046 Fax: (956) 831-8064  
info@interlube.us  
www.interlube.us

**Motus M1 Terminals**

14301 R.L. Ostos Road  
Brownsville, TX 78521  
(210) 298-2222  
hrivera@motus.energy  
www.motus.energy

**PMI Service North America Inc.**

909 Fannin St.  
Houston, TX 77010  
(713) 567-0189

**Seadrift Pipeline Corporation**

P.O. Box 4286 Houston, TX 77210  
(282) 966-4068  
dialjh@dow.com  
www.dow.com/pipeline/gulfcoast/

**TransMontaigne Operating Company LP**

10150 State Hwy. 48  
Brownsville, TX 78521  
(956) 831-3531  
kgarcia@transmontaigne.com  
www.transmontaigne.com

**Valero Brownsville Terminal LLC**

10950 Old State Hwy. 48  
Brownsville, TX 78521  
(210) 345-3206  
james.stegall@valero.com

**PORT AUTHORITY ATTORNEY****Rentfro, Irwin & Irwin Law Firm PLLC**

1650 Paredes Line Road Suite 102  
Brownsville, TX 78521  
(956) 542-4329 Fax: (956) 542-4320  
info@rentfrolawfirm.net  
www.rentfrolawfirm.net

**PORT OF BROWNSVILLE ADMINISTRATION****Eduardo A. Campirano**

Port Director & CEO  
1000 Foust Road Brownsville, TX 78521  
(956) 831-4592 Fax: (956) 831-5006  
eacampirano@portofbrownsville.com  
www.portofbrownsville.com

**Arturo Gomez**

Deputy Port Director of Operations  
1000 Foust Road Brownsville, TX 78521  
(956) 838-7030 Fax: (956) 831-5006  
agomez@portofbrownsville.com  
www.portofbrownsville.com

**Dr. Melinda Rodriguez**

Deputy Port Director of Administration  
1000 Foust Road Brownsville, TX 78521  
(956) 838-7010 Fax: (956) 831-5006  
mrodriguez@portofbrownsville.com  
www.portofbrownsville.com

**Ariel Chavez II, P.E./R.P.L.S.**

Director of Engineering Services  
1000 Foust Road Brownsville, TX 78521  
(956) 838-7002 Fax: (956) 831-5006  
achavez@portofbrownsville.com  
www.portofbrownsville.com

**William G. Dietrich**

Chief of Police & Security  
2993 N. Indiana Ave., Suite B,  
Brownsville, TX 78526  
(956) 509-2100 Fax: (956) 831-6350  
wdietrich@portofbrownsville.com  
www.portofbrownsville.com

## BUSINESS DIRECTORY

### Jose Herrera

Director of Facilities Maintenance  
1000 Foust Road Brownsville, TX 78521  
(956) 831-4592 Fax: (956) 831-5242  
jherrera@portofbrownsville.com  
www.portofbrownsville.com

### Jorge I. Montero

Director of Communications  
1000 Foust Road Brownsville, TX 78521  
(956) 838-7006 Fax: (956) 831-5006  
jmontero@portofbrownsville.com  
www.portofbrownsville.com

### Margie S. Recio

Director of Administrative Services  
1000 Foust Road Brownsville, TX 78521  
(956) 838-7021 Fax: (956) 831-5006  
mrecio@portofbrownsville.com  
www.portofbrownsville.com

### Antonio "Tony" Rodriguez, A.Z.S.

Director of Cargo Services & FTZ  
Administrator  
1000 Foust Road Brownsville, TX 78521  
(956) 838-7033 Fax: (956) 831-5006  
trodriguez@portofbrownsville.com  
www.portofbrownsville.com

### Zeus Yañez

Director of Finance  
1000 Foust Road Brownsville, TX 78521  
(956) 838-7023 Fax: (956) 831-5106  
zyanez@portofbrownsville.com  
www.portofbrownsville.com

### Guillermo Rico

Accounts Sales Manager  
1000 Foust Road Brownsville, TX 78521  
(956) 838-7045 Fax: (956) 831-5006  
grico@portofbrownsville.com  
www.portofbrownsville.com

## PUBLIC SCALES

### Port Public Scale

3501 Foust Road  
Brownsville, TX 78521  
(956) 838-0606  
publicscale@yahoo.com

### Quality Weighing Services Inc.

875 N. Milo Road  
Brownsville, TX 78521  
(956) 831-8253  
Fax: (956) 831-8649  
qualityweighing@att.net

### West Plains LLC

9155 R.L. Ostos Road  
Brownsville, TX 78521  
(832) 413-2466  
www.westplainsllc.com

## RAIL CARRIERS/SERVICE

### Brownsville & Rio Grande International Railway (BRG)

12650 State Hwy. 48  
Brownsville, TX 78521  
(956) 548-9201  
sgonnella@omnitrax.com  
www.omnitrax.com

### BSNF Railway

2650 Lou Menk Drive  
Ft. Worth, TX 76131-2830  
(323) 277-2016  
Samantha.galltin@bsnf.com  
www.bsnf.com

### Canadian Pacific Kansas City (CPKC)

Col. Hidalgo, Monterrey  
Nuevo Leon 64420, Mexico  
011-52-818-305-7850  
deaton@cpkcm.mx  
www.cpkcsr.com/es-mx

### Omega Rail Services Inc.

6567 W. U.S. Hwy. 90  
Del Rio, TX 78840  
(830) 488-6224  
jtorres@omegarailservices.com  
www.omegarailservices.com

### OmniTRAX Inc. (BRG)

252 Clayton St., 4th Floor  
Denver, CO 80206  
(303) 398-0500  
info@omnitrax.com  
www.omnitrax.com

### Union Pacific Railroad

24125 Aldine Westfield Road  
Spring, TX 77373  
(281) 350-7592  
Fax: (402) 223-2231  
tomoeller@up.com  
www.up.com

## RECYCLING

### All Star Metals LLC

101 Box Car Road  
Brownsville, TX 78521  
(956) 838-2110 Fax: (956) 838-2190  
www.allstarmetals.com

### BC Equipment Sales Inc.

201 E. Expressway 83  
La Feria, TX 78559  
(956) 379-8664 or (956) 797-0072  
rcuevas@bc-equipment.com  
www.bcequipment.com

# RESERVE YOUR AD TODAY!



FOR MORE INFORMATION:

**Jorge I. Montero**

(956) 838-7006

jmontero@portofbrownsville.com



**EMR/International Shipbreaking Ltd. LLC**  
18601 R.L. Ostos Road  
Brownsville, TX 78521  
(956) 831-2299 Fax: (956) 831-0216  
crystal.alsup@emrgroup.com  
internationalshipbreaking.com  
www.emrgroup.com

**Fortune Ferrous Inc.**  
21301 R.L. Ostos Road  
Brownsville, TX 78521  
(956) 928-1702 Fax: (956) 928-1364  
artmcginnis@fortunegroup.net

**H & H Oil**  
7941 Recycle Drive  
Corpus Christi, TX 78409  
(361) 289-5220 Fax: (361) 289-6304  
chanceb@hhrecycling.com  
www.hhrecycling.com

**Port of Brownsville Recycling**  
6915 FM 511 Brownsville, TX 78526  
(956) 831-6707  
nancygaytan@pbrecycling.com

**SA Recycling /SteelCoast**  
16200 Joe Garza Sr. Road  
Brownsville, TX 78521  
(956) 509-2031 Fax: (956) 435-0068  
reception@sarecycling.com  
www.sarecycling.com

## SERVICES, MARINE

**AP Sensing Americas LP**  
13280 NW Freeway, Suite F, #355  
Houston, TX 77040  
(281) 304-0128 Fax: (281) 256-2392  
rich.holeman@apsensing.com  
www.apsensing.com

**BC Equipment Sales Inc.**  
201 E. Expressway 83  
La Feria, TX 78559  
(956) 379-8664 or (956) 797-0072  
rvela@bc-equipment.com  
www.bcequipment.com

**Back Up Solutions**  
619 Artisan Way  
San Antonio, TX 78260  
(956) 342-0506  
rubmart@msn.com

**Brownsville Gulfside Warehouse Inc.**  
400 R.L. Ostos Road  
Brownsville, TX 78521  
(956) 831-4241 Fax: (956) 831-2200  
rsarquis@brownsvillegulfside.com  
www.dixshipping.com

**Heavy-Duty Equipment Inc.**  
5500 R.L. Ostos Road  
Brownsville, TX 78521  
(956) 831-2783  
raostos@dixshipping.com

**Holt CAT**  
10701 N. Highway 281  
Edinburg, TX 78541  
(956) 292-7900  
www.holtcat.com

[portofbrownsville.com](http://portofbrownsville.com)

**Iron Mike Marine Inc.**  
25 Hawser Bend Road  
Los Fresnos, TX 78566  
(956) 778-5906  
imm1998@aol.com

**Seatrium AmFELS Inc.**  
20000 State Hwy. 48  
Brownsville, TX 78521  
(956) 831-8220 Fax: (956) 831-6220  
www.seatrium.com

**Kuehne + Nagel**  
15450 Diplomatic Plaza  
Houston, TX 77032  
(281) 449-8888  
jim.mcneille@kuehne-nagel.com  
www.kuehne-nagel.com

**M & M Mooring & Marine Services**  
2700 RL Ostos Road  
Brownsville, TX 78521  
(956) 371-2476 Fax: (956) 831-4490  
markclive67@hotmail.com

**Marine Salvage & Services Inc.**  
416 W. South Shore Drive  
Port Isabel, TX 78578  
(956) 943-2648 Fax: (956) 943-4516  
billy@marineservice.us  
www.marineservice.us

**Pete's Fleet**  
500 Express Dock Road  
Brownsville, TX 78521  
(956) 491-1011  
hdmtx@hotmail.com

**Pile Dynamics Inc.**  
30725 Aurora Road  
Cleveland, OH 44139  
(623) 580-8990 or (956) 579-1364  
sgranger5357@gmail.com

**Signet Maritime Corporation**  
7400 Foust Road  
Brownsville, TX 78521  
(956) 838-6800 Fax: (956) 838-6801  
ida.trevino@signetmaritime.com  
www.signetmaritime.com

**SA Recycling /SteelCoast**  
16200 Joe Garza Sr. Road  
Brownsville, TX 78521  
(956) 509-2031 Fax: (956) 435-0068  
reception@sarecycling.com  
www.sarecycling.com

**Wolfe Sandblasting & Industrial Painting**  
1800 Bayou Court  
Brownsville, TX 78521  
(956) 312-1065  
donwolfe75@gmail.com  
www.wolfesandblastingandindustrialpainting.com

**Zimco Marine LLC**  
1430 Everglades Road  
Brownsville, TX 78521  
(956) 831-7828  
Fax: (956) 831-0135  
gwzimco@aol.com

## SERVICES, SECURITY

**AP Sensing Americas LP**  
13280 NW Freeway, Suite F, #355  
Houston, TX 77040  
(281) 304-0128 Fax: (281) 256-2392  
rich.holeman@apsensing.com  
www.apsensing.com

**American Surveillance**  
55 Galonsky St. Brownsville, TX 78521  
(956) 504-5656  
Fax: (956) 504-5060  
pescobedo@americansurveillanceco.com  
www.americansurveillanceco.com

**DPS Alarms**  
355 Old Port Isabel Road  
Brownsville, TX 78521  
(956) 541-6056 Fax: (956) 541-6961  
ajc@dpsalarms.com  
www.dpsalarms.com

## SHIP REPAIR/RECYCLING

**All Star Metals LLC**  
101 Box Car Road  
Brownsville, TX 78521  
(956) 838-2110 Fax: (956) 838-2190  
www.allstarmetals.com

**BC Equipment Sales Inc.**  
201 E. Expressway 83  
La Feria, TX 78559  
(956) 379-8664 or (956) 797-0072  
rvela@bc-equipment.com  
www.bcequipment.com

**Bay Bridge Texas LLC**  
23501 S. R.L. Ostos Road  
Brownsville, TX 78521  
(956) 838-1414  
svyas@baybridgetexas.com

**EMR/International Shipbreaking Ltd. LLC**  
18601 R.L. Ostos Road  
Brownsville, TX 78521  
(956) 831-2299 Fax: (956) 831-0216  
crystal.alsup@emrgroup.com  
www.emrgroup.com

**Holt CAT**  
10701 N. Highway 281  
Edinburg, TX 78541  
(956) 292-7900  
www.holtcat.com

**Seatrium AmFELS Inc.**  
20000 State Hwy. 48  
Brownsville, TX 78521  
(956) 831-8220  
Fax: (956) 831 6220

**SA Recycling /SteelCoast**  
16200 Joe Garza Sr. Road  
Brownsville, TX 78521  
(956) 509-2031 Fax: (956) 435-0068  
reception@sarecycling.com  
www.sarecycling.com

## BUSINESS DIRECTORY

### SHIPPING AGENTS

#### Dix Agency Brownsville LP

5500 R.L. Ostos Road  
Brownsville, TX 78521  
(956) 831-4228 Fax: (956) 831-2559  
www.dixshipping.com  
www.dixshipping.com

#### Fillette Green Shipping Services Corporation

101 N. Shoreline Blvd, Suite 102  
Corpus Christi, TX 78374  
(361) 446-9547  
scott@fillettegreen.com  
www.fillettegreen.com

#### GAC North America

4444 Corona, Suite 100  
Corpus Christi, TX 78401  
(361) 883-7254  
mauricio.rosales@gac.com

#### General Steamship Corporation

710 Buffalo St., Suite 809  
Corpus Christi, TX 78401  
(361) 883-2300 Fax: (361) 883-2302  
www.gensteam.com

#### Gulf Harbor Shipping LLC

4444 Corona Drive, Suite 132  
Corpus Christi, TX 78411  
(361) 888-7400 Fax: (414) 231-8732  
corpuschristi@gulpharbor.com  
www.gulpharbor.com

#### Host Agency

400 Mann St., Suite 603  
Corpus Christi, TX 78401  
(361) 452-8671  
corpuschristi@hostagency.com  
www.tparkerhost.com

#### Inchape Shipping

710 Buffalo St., Suite 505  
Corpus Christi, TX 78401  
(361) 882-1771  
www.iss-shipping.com

#### M & Mooring & Marine Services

4300 R.L. Ostos Road  
Brownsville, TX 78521  
(956) 371-2476  
captmarkclive67@gmail.com  
www.mm-mooringmarineservices.com

#### Moran Gulf Shipping

400 Mann St., Suite 907  
Corpus Christi, TX 78401  
(361) 884-0903 Fax (361) 887-6132  
crp@moranshipping.com  
www.moranshipping.com

#### Norton Lilly International

710 Buffalo St., Suite 501  
Corpus Christi, TX 78401  
(361) 888-6800  
crp-ops@nortonlilly.com  
www.nortonlilly.com

### STEVEDORES

#### Dix Shipping Company Inc.

5500 R.L. Ostos Road  
Brownsville, TX 78521  
(956) 831-4228 Fax: (956) 831-8559  
lostos@dixshipping.com  
www.dixshipping.com

#### Gulf Stream Marine Inc.

2700 R.L. Ostos Road  
Brownsville, TX 78521  
(956) 831-6766  
info@gulfstreammarine.com  
www.gulfstreammarine.com

#### Schaefer Stevedoring

4201 Foust Road  
Brownsville, TX 78521  
(956) 831-4007 Fax: (956) 831-9751  
info@schaeferstevedoring.com  
www.schaeferstevedoring.com

### SURVEYORS, MARINE

#### Gonzalez Engineering & Surveying Inc.

153 E. Price Road  
Brownsville, TX 78521  
(956) 546-5515 Fax: (956) 546-2804  
edmundo@gonzalezengineering.com

### TERMINAL OPERATORS, DRY BULK

#### Brownsville Gulfside Warehouse Inc.

400 R.L. Ostos Road  
Brownsville, TX 78521  
(956) 831-4241 Fax: (956) 831-2200  
rsarquis@brownvillegulfside.com-  
www.dixshipping.com

#### Dix Shipping Company Inc.

5500 R.L. Ostos Road  
Brownsville, TX 78521  
(956) 831-4228 Fax: (956) 831-8559  
lostos@dixshipping.com  
www.dixshipping.com

#### Gulf Facilities Inc.

4201 Foust Road  
Brownsville, TX 78521  
(956) 831-4007 Fax: (956) 831-9751  
info@schaeferstevedoring.com  
www.gulf-facilities.com

#### Gulf Stream Marine Inc.

2700 R.L. Ostos Road  
Brownsville, TX 78521  
(956) 831-6766  
info@gulfstreammarine.com  
www.gulfstreammarine.com

#### Schaefer Stevedoring

4201 Foust Road  
Brownsville, TX 78521  
(956) 831-4007 Fax: (956) 831-9751  
info@schaeferstevedoring.com  
www.schaeferstevedoring.com

#### West Plains LLC

9155 R.L. Ostos Road  
Brownsville, TX 78521  
(832) 413-2466  
www.westplainsllc.com

### TERMINAL OPERATORS, LIQUID BULK

#### ABC Gulf Coast Terminal LL

15801 R.L. Ostos Road  
Brownsville, TX 78521  
(956) 838-0033 Fax: (956) 838-0048  
fredf@abcgulfcoast.com

#### Bluewing One LLC

11700 Old State Hwy. 48  
Brownsville, TX 78521  
(956) 838-0840  
commercialops@bluewingmidstream.com  
www.bluewingmidstream.com

#### Bluewing Royal

1005 Anchor Road/Old State Hwy 48  
Brownsville, TX 78521  
(956) 831-7117  
commercialops@bluewingmidstream.com  
www.bluewingmidstream.com

#### CITGO Petroleum Corporation

11001 R.L. Ostos Road  
Brownsville, TX 78521  
(956) 831-8241  
cmilste@citgo.com  
www.citgo.com

#### CRV Terminals

10155 Old S.H.48 Brownsville, TX 78521  
(956) 621-1245  
rolando@rvfuels.com

#### Firebird Bulk Carriers Inc.

9100 State Hwy. 48  
Brownsville, TX 78521  
(956) 832-0888 Fax: (956) 832-0284  
tylerb@firebird-tx.com  
www.firebird-tx.com

#### INTERLUBE Corporation

750 N. Anchor Road  
Brownsville, TX 78521  
(956) 831-7046  
diana@interlube.us  
www.interlubecorp.com

#### KLM Terminal

10925 Old State Hwy 48  
Brownsville, TX 78521  
(210) 867-5443  
billm@klm3c.com

#### Motus M1 Terminals

14301 R.L. Ostos Road  
Brownsville, TX 78521  
(210) 298-2222  
hrivera@motus.energy  
www.motus.energy

#### Sunoco LLC

9351 Old State Hwy 48  
Brownsville, TX 78521  
(215) 486-2208

#### TransMontaigne Operating Company LP

10150 State Hwy. 48  
Brownsville, TX 78521  
(956) 831-3531  
kgarcia@transmontaigne.com  
www.transmontaigne.com

#### Valero Brownsville Terminal LLC

10950 Old State Hwy. 48  
Brownsville, TX 78521  
(210) 345-3206  
james.stegall@valero.com



## TOWING, TUG

### Signet Maritime Corporation

7400 Foust Road  
Brownsville, TX 78521  
(956) 838-6800 Fax: (956) 838-6801  
ida.trevino@signetmaritime.com  
www.signetmaritime.com

## TRANSLOAD FACILITY

### Brownsville Gulfside Warehouse Inc.

400 R.L. Ostos Road  
Brownsville, TX 78521  
(956) 831-4241  
Fax: (956) 831-2200

### Gulf Facilities Inc.

4201 Foust Road  
Brownsville, TX 78521  
(956) 831-4007  
Fax: (956) 831-9751  
info@schaeferstevedoring.com  
www.gulf-facilities.com

### Gulf Stream Marine Inc.

2700 R.L. Ostos Road  
Brownsville, TX 78521  
(956) 831-6766  
info@gulfstreammarine.com  
www.gulfstreammarine.com

## TRUCKING

### Arguindegui Oil Co.

17555 State Hwy 48  
Brownsville, TX 78521  
(956) 722-5251  
guillermo.trevino@argpetro.com

### Auto Lineas Sigifredo Garcia Palacios SA de CV

3005 Mineral Loop  
Brownsville, TX 78521  
(956) 442-3449  
asgp\_ironrodriguez@prodigy.net.mx

### B & L Freight Service Inc.

2775 Foust Road  
Brownsville, TX 78521  
(956) 592-0994  
bltrucking269@yahoo.com

### Bravo Motor Carriers

3664 Commerce Dr. Suite B  
Brownsville, Texas 78520  
(956) 350 - 4454  
bltrucking269@yahoo.com

### Brownsville Gulfside Warehouse Inc.

400 R.L. Ostos Road  
Brownsville, TX 78521  
(956) 831-4241 Fax: (956) 831-2200  
rsarquis@brownsvillegulfside.com  
www.dixshipping.com

### C.R. Trucking LLC

9275 Old State Hwy. 48  
Brownsville, TX 78521  
(956) 572-5351  
rsgarcia73@hotmail.com

portofbrownsville.com

### Choptank Transport Inc.

5650 Breckenridge Park Drive,  
Suite 103 Tampa, FL 33610  
(800) 568-2240  
sharon.sonmez@choptanktransport.com  
choptanktransport.com

### ATS Operations LLC

2981 N. Indiana Ave.  
Brownsville, TX 78526  
(956) 466-3563

### GDO Trucking

2605 N. Indiana Ave.  
Brownsville, TX 78526  
(956) 572-2513  
gdotrucking@hotmail.com

### Jonick-Lopez International Transport LLC

5801 Foust Road  
Brownsville, TX 78521  
(956) 838-1252 Fax: (956) 838-1253  
stlopezjr@gmail.com

### Kuehne + Nagel

15450 Diplomatic Plaza  
Houston, TX 77032  
(281) 449-8888  
jim.mcneille@kuehne-nagel.com  
www.kuehne-nagel.com

### Lupe's Wrecker Service

6725 Portway Drive  
Brownsville, TX 78521  
(956) 831-4188 Fax: (956) 831-9488  
lupeswrecker14@yahoo.com

### Molina Trucking

2885 Foust Road  
Brownsville, TX 78521  
(956) 299-1397

### Optimum Quality Transfers LLC

9235 Old State Hwy. 48  
Brownsville, TX 78521  
(956) 592-1020  
optimumqualityt@aol.com

### Pharr International Bridge

9900 S. Cage Blvd.  
Pharr, TX 78577  
(956) 402-4660 Fax: (956) 223-2013  
luis.bazan@pharr-tx.gov  
www.pharrbridge.com

### Pittsburgh Intermodal Terminals

90 Century Drive Ambridge, PA 15003  
(724) 822-2456 Fax: (724) 266-3911  
vnicholas@nicholasinc.com  
www.nicholasinc.com

### Schafer Stevedoring

4201 Foust Road  
Brownsville, TX 78521  
(956) 831-4007 Fax: (956) 831-9751  
info@schaferstevedoring.com  
www.schaferstevedoring.com

### Seahorse Transportation Inc.

3051 N. Indiana Road  
Brownsville, TX 78526  
(956) 831-0600 Fax: (956) 831-4164  
ariel@seahorsetransport.net  
www.seahorsetransport.net

### TLO Logistics

16651 R.L. Ostos Road  
Brownsville, TX 78521  
(956) 831-7665  
tlogisticsusa@gmail.com  
www.tlogisticsusa.com

### Transporte Internacional Lopez

**Ochoa, SA de CV**  
775 Milo Road  
Brownsville, TX 78521  
(956) 838-2252  
tilsa@prodigy.net.mx

## UTILITY COMPANIES

### AEP Texas

355 W. Hwy. 77  
San Benito, TX 78586  
(956) 361-2088  
Fax: (956) 361-2090  
dlucio@aep.com  
www.aeptexas.com

### Brownsville Public Utilities Board (BPUB)

1425 Robinhood Drive  
Brownsville, TX 78521  
(956) 983-6100 Fax: (956) 983-6289  
www.brownsville-pub.com

### Magic Valley Electric Cooperative

1 ¾ Mi W. Hwy. 83  
Mercedes, TX 78570  
(866) 225-5683  
info@magicvalley.coop  
www.magicvalley.coop

### Texas Gas Service

5602 Grimes Road  
Harlingen, TX 78550  
(956) 357-3106  
victor.lopez@onegas.com  
www.onegas.com

## VESSEL FUELING COMPANIES

### PMI Service North America Inc.

909 Fannin St.  
Houston, TX 77010  
(713) 567-0189  
dtollefson@pmicim.com

## WAREHOUSING & STORAGE

### B & L Freight Service Inc.

2775 Foust Road  
Brownsville, TX 78521  
(956) 592-0994  
bltrucking269@yahoo.com

### Brownsville Gulfside Warehouse Inc.

400 R.L. Ostos Road  
Brownsville, TX 78521  
(956) 831-4241 Fax: (956) 831-2200  
rsarquis@brownsvillegulfside.com  
www.dixshipping.com

### CSC Sugar

8700 Old Highway 48  
Brownsville, TX 78521  
(915) 328-7851  
nrodriguez@cscsugar.com  
www.cscsugar.com

## BUSINESS DIRECTORY

### **Dix Shipping Company Inc.**

5500 R.L. Ostos Road  
Brownsville, TX 78521  
(956) 831-4228 Fax: (956) 831-8559  
lostos@dixshipping.com  
www.dixshipping.com

### **Electro-Hi LLC**

2801 R.L. Ostos Road  
Brownsville, TX 78521  
(956) 434-1466  
electrohi@sbcglobal.net

### **Forza Steel**

40881 State Hwy. 48  
Brownsville, TX 78521  
www.forzasteel.com

### **Gulf Facilities Inc.**

4201 Doust Road  
Brownsville, TX 78521  
(956) 831-4007 Fax: (956) 831-9751  
nfo@schaferstevedoring.com  
www.gulf-facilities.com

### **JTM II Ltd.**

550 E. Levee St.  
Brownsville, TX 78520  
(956) 542-3642 Fax: (956) 542-3698  
marshall@ransomeray.com

### **Jonick-Lopez International Transport LLC**

5801 Foust Road  
Brownsville, TX 78521  
(956) 838-1252 Fax: (956) 838-1253  
jonicklopez@gmail.com

### **Jose Luis Garcia**

2600 N. Indiana Ave.  
Brownsville, TX 78526  
(956) 592-1820  
steelsecondary@aol.com

### **Kuehne + Nagel**

15450 Diplomatic Plaza  
Houston, TX 77032  
(281) 449-8888  
jim.mcneille@kuehne-nagel.com  
www.kuehne-nagel.com

### **Panalpina Inc.**

19409 Kenswick Drive  
Humble, TX 77338  
(281) 446-0600  
Fax: (281) 548-7553  
carol.fox@panalpina.com  
www.panalpina.com

### **Parker & Company**

4694 Jaime Zapata Ave.  
Brownsville, TX 78521  
(956) 831-2000 Fax: (956) 831-4140  
fparker@parker-logistics.com  
www.parkerandcompany.com

### **Pittsburgh Intermodal Terminals**

90 Century Drive Ambridge, PA 15003  
(724) 822-2456 Fax: (724) 266-3911  
vnicholas@nicholasinc.com  
www.nicholasinc.com

### **Port Warehouse Properties LP**

2700 R.L. Ostos Road  
Brownsville, TX 78521  
(956) 831-8533  
jcowen2@cowen-group.com

### **Posey International**

3664 Commerce Dr. Suite B  
Brownsville, Texas 78520  
(956) 350-4454  
info@posey-intl.com  
CHB@posey-intl.com  
www.posey-intl.com

### **OmniTRAX Inc.**

252 Clayton St., 4th Floor  
Denver, CO 80206  
(303) 398-0500  
info@omnitrax.com  
www.omnitrax.com

### **Roser & Cowen Logistical Customs Services LTD**

4695 Towerwood Drive  
Brownsville, TX 78521  
(956) 831-8533  
nroser@rosercowen.co  
www.rosercowen.com

### **Schafer Stevedoring**

4201 Foust Road  
Brownsville, TX 78521  
(956) 831-4007 Fax: (956) 831-9751  
info@schaferstevedoring.com  
www.schaferstevedoring.com

### **Strike LLC**

40881 State Hwy. 48  
Brownsville, TX 78521  
(713) 376-0417  
johnny.boykin@strikeusa.com  
www.strikeusa.com

### **TLO Logistics**

16651 R.L. Ostos Road  
Brownsville, TX 78521  
(956) 831-765  
tlogisticsusa@gmail.com  
www.tlogisticsusa.com

### **TCS Brokerage**

174 Industrial Drive  
Brownsville, TX 78521  
(956) 544-4575 Fax: (956) 544-6950  
martha@tcsbrokerage.com  
www.tcsbrokerage.com

### **Texan Cement**

3801 Foust Road  
Brownsville, TX 78521  
(956) 838-9115  
jquintanilla@texacement.com  
www.texacement.com

## FISHING HARBOR

### **Abrego, Francisco**

2500 Everglades Road  
Brownsville, TX 78521  
(956) 831-2884  
garciabookkeeping@gmail.com

### **Alejandra Shrimp Outlet, Inc.**

2480 Fisherman's Place Rd.  
Brownsville, TX 78521

### **Aguiar Brothers Inc.**

2330 Cajun Court  
Brownsville, TX 78521  
(956) 617-6501  
josue.aguiar23@hotmail.com

### **Brownsville Shrimp Unloading Dock, LLC.**

2830 Cajun Court  
Brownsville, TX 78521  
(956)831-9373

### **Burnell Marine & Supply Inc.**

2230 Fisherman's Place Road  
Brownsville, TX 78521  
(956) 831-3502  
burnelltrawlers@yahoo.com

### **Castellanos Corp.**

3700 Gator Court  
Brownsville, TX 78521  
(956) 831-9373

### **Castro Trawlers Inc.**

3520 Gator Court  
Brownsville, TX 78521  
(956) 521-4520  
otilia\_castro@yahoo.com

### **Co-Op Marine Railways, LLC.**

3960 Dry Dock Court  
Brownsville, TX 78521  
(956) 838-1986

### **CVC Construction, Inc.**

2800 Everglades Rd.  
Brownsville, TX 78521  
(956) 838-5636  
mary.adweldingcompany@gmail.com

### **D&A Seafoods, LLC.**

3345 Dry Dock Rd.  
& 2874 Angler's Place Rd.  
Brownsville, TX 78521  
(512)709-9893  
blackdrum25@gmail.com

### **Crutek**

1430 Angler's Place Road  
Brownsville, TX 78521  
(956) 639-1183  
crutekservice@gmail.com

### **Don Nico Trawlers Inc.**

1385 Bayou Court  
Brownsville, TX 78521  
(956) 408-3747

### **E & J Trawler, Inc.**

1385 Bayou Court  
Brownsville, TX 78521  
(956)459-8745

### **Fel Glo Inc.**

2250 Angler's Place Road  
Brownsville, TX 78521  
(956) 838-1234

### **G&O Shrimp Co. Inc.**

2315 Bayou Court  
Brownsville, TX 78521  
(956) 831-0427

### **G.C. Trawlers**

3060 Cajun Court  
Brownsville, TX 78521  
(956) 983-2823  
gabbycantu@gmail.com



**Garcia Bookkeeping**  
2380 Everglades Road  
Brownsville, TX 78521  
(956) 831-9373  
garciabookkeeping@gmail.com

**Gonzalez Trawlers Inc.**  
1700 Bayou Court  
Brownsville, TX 78521  
(956) 792-6997  
gonzal590@aol.com

**Hance Holdings Inc.**  
2275 Angler's Place Road  
Brownsville, TX 78521  
(956) 279-4085  
brumy101@aol.com

**Iron Mike Marine Inc.**  
25 Hawser Bend Road  
Los Fresnos, TX 78566  
(956) 778-5906  
imm1998@aol.com

**Juan's Electric**  
2485 Fisherman's Place Road  
Brownsville, TX 78526  
(956) 312-4229

**La Familia**  
1190 Angler's Place Road  
Brownsville, TX 78521  
(956) 518-3055  
sosaleticia16@yahoo.com

**La Wera Inc.**  
1395 Cajun Court  
Brownsville, TX 78521  
(956) 204-3586

**Labor and Prosper, Inc.**  
1930 Bayou Court  
Brownsville, TX 78521  
(956) 838-1986  
ochoatrawlers@gmail.com

**Lighthouse Docks Inc.**  
2130 Cajun Court  
Brownsville, TX 78521  
(956) 982-4462

**Linda Lou Boat Corporation**  
3200 Cajun Court  
Brownsville, TX 78521  
(956) 698-1667

**Lindwood Trawlers Inc.**  
1995 Cajun Court  
Brownsville, TX 78521  
(956) 831-3604  
ltrawlers@gmail.com

**M/V Challenge 42 Inc.**  
1675 Angler's Place Road  
Brownsville, TX 78521  
(956) 299-0793  
neddyalamos@aol.com

**Maria Elena Inc.**  
2600 Cajun Court  
Brownsville, TX 78521  
(956) 943-4903  
hilda\_margie3@hotmail.com

[portofbrownsville.com](http://portofbrownsville.com)

**Marine & Industrial Safety**  
1120 Everglades Road  
Brownsville, TX 78521  
(956) 639-4420  
tasbapauni@aol.com

**Marine Railway Inc.**  
3455 Gator Court  
Brownsville, TX 78521  
(956) 831-7828  
gwlzimco@aol.com

**Monita Inc.**  
1680 Fisherman's Place Road  
Brownsville, TX 78521  
(956) 742-5259  
garciabookkeeping@gmail.com

**National Seafoods Inc.**  
2675 Angler's Place Road  
Brownsville, TX 78521  
(956) 943-2648  
billy@marineservice.us

**Ocean Port Maintenance Inc.**  
3805 Dry Dock Court  
Brownsville, TX 78521  
(956) 831-0157  
gonzal590@aol.com

**Ochoa, Guadalupe**  
1695 Bayou Court  
Brownsville, TX 78521  
(956) 312-1756  
ochoatrawlers@gmail.com

**Oil Patch Fuel & Supply Inc.**  
2115 Bayou Court  
Brownsville, TX 78521  
(956) 831-4839  
frank@oilpatchfuelandsupply.com  
www.oilpatchfuelandsupply.com

**OLG Petroleum LLC**  
1900 Fisherman's Place Road  
Brownsville, TX 78521  
(956) 212-2870  
lugo056@gmail.com

**Palo Alto Brownsville**  
3150 N. Indiana Ave.  
Brownsville, TX 78521  
(830)388-6600

**Paul Piazza & Son Inc.**  
1745 Cajun Court  
Brownsville, TX 78521  
(817) 907-1557  
mmasterson@paulpiazza.com

**Pollo's Diesel/  
Mota's Refrigeration**  
3810 Gator Court  
Brownsville, TX 78521  
(956) 454-6471  
lossuenos1@att.net

**Port Machine Shop**  
1720 Everglades Road  
Brownsville, TX 78521  
(956) 831-3508  
garciabookkeeping@gmail.com

**Purata Trawlers Inc.**  
1940 Bayou Court  
Brownsville, TX 78521  
(956) 233-9451  
purata1@juno.com

**Reyes Marine Industries Inc.**  
2020 Bayou Court  
Brownsville, TX 78521  
(956) 838-1219  
creyes4734@aol.com

**Rodco Marine Supply Inc.**  
1750 Angler's Place Road  
Brownsville, TX 78521  
(956) 831-8271  
gloriaaa@rodcomarine.com  
www.rodcomarine.com

**S T Marine**  
3210 Dry Dock Court  
Brownsville, TX 78521  
(956) 572-2281  
lalejandro@rgv.rr.com

**Sea Breeze Marine Inc.**  
1515 Bayou Court  
Brownsville, TX 78521  
(956) 371-0017  
garciabookkeeping@gmail.com

**Shallow Stalker Boats LLC**  
2780 Angler's Place Road  
Brownsville, TX 78521  
(956) 943-1551  
wesellboats@yahoo.com

**Shrimp Outlet**  
2230 Fisherman's Place Road  
Brownsville, TX 78521  
(956) 831-8114  
lburnell@aol.com  
www.shrimpoutletbrownsville.com

**Snodgrass Inc.**  
2025 Angler's Place Road  
Brownsville, TX 78521  
(956) 831-2846  
neddyalamos@aol.com

**Texas Shrimp Association**  
1000 Everglades Road  
Brownsville, TX 78521  
(956) 831-6550  
andreahance@texasshrimp  
association.org  
www.texasshrimpassociation.org

**Two Fishing Friends Inc.**  
2000 Cajun Court  
Brownsville, TX 78521  
(956) 572-7658

**Welding Works International**  
2800 Everglades Road  
Brownsville, TX 78521  
(956) 838-5636  
mary.adweldingcompany@gmail.com  
www.weldingworks.us

**Whelan Industries, Inc.**  
3060 Cajun Court  
Brownsville, TX 78521  
(956) 330-7574  
j22rec@gmail.com

**Wolfe Sandblasting & Industrial Painting**  
1800 Bayou Court  
Brownsville, TX 78521  
(956) 312-1065  
donwolfe75@gmail.com  
www.wolfesandblastingandindustrial  
painting.com

# Your Port. Our Community.

Since 1936



## **JOBS**

Cultivating sustainable workforce opportunities and developing human capital.



## **COMMUNITY**

Promoting educational initiatives and improving quality of life in the Rio Grande Valley.



## **ENVIRONMENT**

Preserving the regional ecosystem and natural resources for present and future generations.



## **INDUSTRY**

Supporting existing industries and fostering economic growth by connecting the region with global markets.

**PORT OF**  
**BROWNSVILLE**  
the port that works



# ADVERTISER'S DIRECTORY

Brownsville Licensed U.S. Customs Brokers Association ..... Page 46

Gulf Stream Marine ..... Inside Front Cover

International Shipbreaking Ltd ..... Back Cover

Lone Star National Bank ..... Inside Back Cover

OmniTRAX ..... Page 1

Pharr International Bridge.....Page 68

Port of Brownsville ..... Page 5, 62, & 64

Schaefer Stevedoring ..... Page 3

The Port Occupational and Medical Clinic .....Page 63

Valley Grocers LLC ..... Page 4



**"WHERE OSHA EXPERIENCE MEETS QUALITY CARE"**

Your time and workforce are our priority.  
 Minimal wait times and OSHA knowledgeable staff to  
 provide your business with the best clinical care in  
 the most convenient location.



**Occupational Medicine  
& Occupational Physicals**

- Respiratory FIT Testing
- Job Injuries/ Worker's Compensation
- Rapid COVID-19 Testing
- Pre & Employment Physicals



**Family  
Medicine**

- Audiograms
- DOT Physicals
- Medical Care
- On-Site X-Rays & Radiology Reports



**Lab work  
& Studies**

- Online Reporting to Employers
- On-Site Rapid Drug Screens
- DOT Drug Screens
- Breath Alcohol Testing
- Pulmonary Function Tests
- Vaccinations / Immunizations
- Minor Surgical Procedures & More
- FAA Certified Aviation Physicals

20035 State Highway 48, Brownsville, Texas | (956) 431-0452 | [www.theportclinic.com](http://www.theportclinic.com) | [brownsville@theportclinic.com](mailto:brownsville@theportclinic.com) | Fax (956) 431-0454

# EXPERT LOGISTICS ON DEMAND

ANYWHERE. ANYTIME. ON TIME.



## CONTACT US

1000 Foust Road Brownsville, TX 78521  
+1 (956) 831-4592  
[www.portofbrownsville.com](http://www.portofbrownsville.com)

**PORT OF**  
**BROWNSVILLE**  
the port that works



# ALPHABETICAL LISTING

905/BMW Inc .....	(956) 832-0280	Camin Cargo Control .....	(956) 832-0789
A-Mex Financial Services .....	(956) 544-5000	Canadian Pacific Kansas City .....	011-52-818-305-7850
ABC Gulf Coast Terminal LLC .....	(956) 838-0042	Canal Barge .....	(504) 581-2424
AEP Texas .....	(361) 881-5849	Castellanos Corp .....	(956) 831-9373
AP Sensing Americas LP .....	(281) 304-0128	Castro Trawlers Inc .....	(956) 521-4520
Abrego, Francisco .....	(956) 831-2884	Celtic Marine and Logistics .....	(225) 752-2490
Action Supply .....	(281) 315-3841	CEMEX Construction Materials .....	(956) 386-1452
Aguaworks Pipe & Supply LLC .....	(956) 831-2500	Chase Bank .....	(956) 982-7606
Aguilar Brothers Inc .....	(956) 617-6501	Chavez Shrimp Co. LLC .....	(956) 341-9696
Alamo Chamber of Commerce .....	(956) 787-2117	Choptank Transport Inc .....	(800) 568-2240
Alamo Concrete Products Ltd .....	(210) 208-1570	CITGO Petroleum Corporation .....	(956) 831-8241
Alamo Economic Development Corporation .....	(956) 787-6622	City of Brownsville .....	(956) 546-4357
All Star Metals LLC .....	(956) 838-2110	Conroe Wood Products Inc .....	(936) 760-2974
Allied Mineral Products Inc.A16 .....	(956) 831-2022	Co-Op Marine Railways LLC .....	(956) 831-9373
Alton Chamber of Commerce .....	(956) 432-0760	Courtyard by Marriott Brownsville .....	(956) 350-4600
American Association of Ports Authorities .....	(703) 684-5700	CRV Terminals .....	(956) 621-1245
American Commercial Barge Line .....	(800) 457-6377	DPS Alarms .....	(956) 541-6056
American Oxygen Co .....	+52-844-4390707	DSV Air & Sea Inc .....	(956) 831-4222
American River Transportation Company .....	(504) 431-1488	Daniel B. Hastings Inc .....	(956) 831-7555
Amspec .....	(361) 452-9214	Diamondback Pipeline LLC .....	(956) 831-3531
American Surveillance .....	(956) 504-5656	Diesel Fuel Injection Inc .....	(956) 831-4744
Arguindegui Oil Co .....	(956) 722-5251	Dix Agency Brownsville LP .....	(956) 831-4228
Austin Star Detonator Co .....	(956) 831-7751	Dix Shipping Company Inc .....	(956) 831-4228
Auto Lineas Sigifredo Garcia Palacios SA de CV .....	(956) 442-3449	Don Nico Trawlers Inc .....	(956) 408-3747
Avant Premium Water & Ice .....	(956) 364-2211	Donna Economic Development Corporation .....	(956) 998-7233
B & L Freight Services Inc .....	(956) 592-0994	Dulce P. Villarreal CHB .....	(956) 372-4569
BC Equipment Sales Inc .....	(956) 379-8664	Duro Bag, a Novolex Company .....	(956) 831-4206
BNSF Railway .....	(888) 428-2673	EarthCon Consultants, Inc .....	(361) 356-4986
Back Up Solutions .....	(956) 342-0506	EMR/International Shipbreaking Ltd. LLC .....	(956) 831-2299
Bank of America .....	(956) 544-6839	Edinburg Chamber of Commerce .....	(956) 383-4974
Bay Bridge Texas LLC .....	(956) 838-1414	Edinburg Economic Development Corporation .....	(956) 383-7124
Beach Resort at South Padre Island .....	(956) 426-9066	Edwards Abstract and Title Co .....	(956) 542-6777
Ben's Glass & Metal .....	(956) 546-1236	Electro-Hi LLC .....	(956) 434-1466
Biehl & Company .....	(956) 831-3224	Elsa Economic Development Corporation .....	(956) 262-2127
Bluewing One LLC .....	(713) 515-4288	Epoxy Design Systems Inc .....	(713) 461-8733
Bluewing Royal .....	(713) 515-4288	Equipment Depot .....	(956) 461-5858
Border Customs Service .....	(956) 548-0311	Estrada Hinojosa & Company, Inc .....	(214) 658-1670
Bougambilias Construction LLC .....	(956) 541-1390	Express Employment Professionals .....	(956) 550-8510
Bravo Motor Carriers .....	(281) 768-8843	Facility Solutions Group .....	(956) 230-2505
Brazos Santiago Pilots .....	(956) 943-3680	Fairfield Inn & Suites by Marriott, Brownsville North .....	(956) 667-5278
British Consulate-General Houston .....	(713) 210-4000	Fel-Glo Inc .....	(956) 838-1234
Brownsville & Rio Grande International Railway (BRG) ....	(956) 548-9201	Fillette Green Shipping Services Corporation .....	(361) 446-9547
Brownsville Chamber of Commerce .....	(956) 542-4341	Firebird Bulk Carriers Inc .....	(956) 832-0888
Brownsville Gulfside Warehouse Inc .....	(956) 831-4241	First Community Bank .....	(956) 547-5100
Brownsville Licensed U.S. Customs Brokers Association .....	(956) 546-5544	First Convenience Bank .....	(956) 504-2000
Brownsville Mooring .....	(956) 551-4736	Fortune Ferrous Inc .....	(956) 982-0205
Brownsville Navigation District Commissioners .....	(956) 831-4592	Frajara Express, LLC .....	(956) 592-1020
Brownsville Public Utilities Board .....	(956) 983-6100	French Consulate-General Houston .....	(713) 572-2799
Brownsville South Padre Island International Airport .....	(956) 542-4373	Friends of Rio Grande Valley Reef Inc .....	(956) 433-9783
Bryant Industrial Services LLC .....	(956) 838-5120	Frost Bank .....	(956) 544-6301
Burnell Marine & Supply Inc .....	(956) 831-3502	Fugro (USA) Inc .....	(713) 369-5600
C & J Logistical Services Inc .....	(956) 214-5050	G & O Shrimp Co. Inc .....	(956) 831-0427
C.R. Trucking LLC .....	(956) 572-5351	G & T Paving LLC .....	(956) 546-3633
CSC Sugar LLC .....	(915) 328-7851	G.C. Trawlers .....	(956) 983-2823
Cameron County International Bridge System .....	(956) 574-8771	GAC North America .....	(361) 883-7254
Cameron County Regional Mobility Authority .....	(956) 621-5571	GDO Trucking .....	(956) 572-2513
Cameron County Sheriff's Office .....	(956) 554-6700	Gallegos Electric Inc .....	(956) 542-0058
		Garcia Bookkeeping .....	(956) 831-9373
		General Pipe & Industrial Constructors - LA LLC .....	(956) 592-6820

General Steamship Corporation .....	(361) 883-2300	Lupe's Wrecker Service .....	(956) 831-4188
Gonzalez Engineering & Surveying Inc .....	(956) 546-5515	M & M Mooring & Marine Services .....	(956) 371-2476
Gonzalez Trawlers Inc .....	(956) 792-6997	M/V Challenge 42 Inc .....	(956) 299-0793
Greater Brownsville Incentives Corporation .....	(956) 561-4133	MEG Engineers .....	(956) 702-8500
Gulf Facilities Inc .....	(956) 831-4007	Magic Valley Concrete LLC .....	(956) 580-2502
Gulf Harbor Shipping LLC .....	(361) 888-7400	Magic Valley Electric Cooperative .....	(866) 225-5683
Gulf Stream Marine Inc .....	(956) 831-6766	Maria Elena Inc .....	(956) 943-4903
H & H Oil .....	(361) 289-5220	Marine & Industrial Safety .....	(956) 639-4420
HDR Engineering Inc .....	(361) 696-3300	Marine Railway Inc .....	(956) 831-7828
Halff Associates .....	(956)303-7100	Marine Salvage & Services Inc .....	(956) 943-2648
Hampton Inn & Suites Brownsville .....	(956) 548-0005	Matthew Leyendecker .....	(956) 504-1700
Hance Holdings Inc .....	(956) 279-4085	Motus T1 Terminals .....	(210) 716-8523
Harbor Master .....	(956) 831-8256	Motus T2 Fuel Oil Terminals .....	(210) 716-8523
Harlingen Chamber of Commerce .....	(956) 423-5440	McAllen Chamber of Commerce .....	(956) 682-2871
Harlingen Economic Development Corporation .....	(956) 216-5081	McAllen Economic Development Corporation .....	(956) 682-2875
Heartland Barge .....	(314) 304-6688	Mediterranean Shipping Company .....	(212) 764-4800
Heavy-Duty Equipment Inc .....	(956) 831-2783	Mejia & Rose Inc .....	(956) 544-3022
Hoisting Wire Rope & Sling Co .....	(361) 888-LIFT (5438)	Mercedes Chamber of Commerce .....	(956) 565-2221
Holiday Inn .....	(956) 541-3332	Mercedes Development Corporation .....	(956) 565-2230
Holt CAT .....	(956) 292-7900	Mexican Consulate-General Brownsville .....	(956) 542-4431
Homewood Suites by Hilton Brownsville .....	(956) 574-6900	Millennium Engineers .....	(956) 702-8500
Host Agency .....	(361) 452-8671	Mission Chamber of Commerce .....	(956) 585-2727
IBC Bank .....	(956) 547-1000	Mission Economic Development Corporation .....	(956) 585-0040
Inchape Shipping .....	(361) 882-1771	Molina Trucking .....	(956) 299-1397
Ingram Barge Line .....	(615) 298-8200	Monita Inc .....	(956) 742-5259
Inter National Bank .....	(956) 574-8500	Moore Diesel Service .....	(956) 433-9608
Intercoastal Salvage Inc .....	(956) 831-8661	Moran Gulf Shipping .....	(361) 884-0903
Interlube Corporation .....	(956) 831-7046	National Seafoods Inc .....	(956) 943-2648
International Longshoremen's Association No. 2995 .....	(956) 831-4133	NAVCO Logistics .....	(956) 542-4138
International Machine Shop .....	(956) 838-1234	Norton Lilly International .....	(361) 888-6800
International Seafarer Center .....	(956) 831-4321	Nuga Diesel Inc .....	(956) 541-7169
Intertek-PSI .....	(956) 423-6826	Nustar Logistics LP .....	(210) 918-5846
Iron Mike Marine Inc .....	(956) 778-5906	OLG Petroleum LLC .....	(956) 212-2870
JTM II LTD .....	(956) 542-3642	Ocean Port Maintenance Inc .....	(956) 831-6348
Jonick-Lopez International Transport LLC .....	(956) 838-1252	Ochoa, Marcelino .....	(956) 312-1756
Juan's Electric .....	(956) 312-4229	Oil Patch Fuel & Supply Inc .....	(956) 831-4839
Kempco Inspection Services Inc .....	(713) 926-1005	Omega Rail Services Inc .....	(830) 488-6224
Kirby Corporation .....	(713) 435-1000	OmniTRAX Inc .....	(303) 398-0500
KLM Terminal .....	(210) 867-5443	Our Lady of the Lake University Rio Grande Valley Campus .....	(956) 277-0146
Koncept Safety .....	(210) 521-1980	PMI Service North America Inc .....	(713) 567-0189
Kuehne + Nagel .....	(281) 449-8888	PNC Bank .....	(956) 547-3900
La Familia .....	(956) 518-3055	Palmview Chamber of Commerce .....	(956) 862-3257
La Feria Chamber of Commerce .....	(956) 277-0601	Panalpina Inc .....	(281) 446-0600
La Feria Economic Development Corporation .....	(956) 797-2261	Panasonic .....	(956) 365-7700
La Joya Economic Development Corporation .....	(956) 581-7002	Parker & Company .....	(956) 831-2000
La Quinta Inn & Suites Brownsville North .....	(956) 350-2118	Parker Towing .....	(205) 349-1677
La Wera Inc .....	(956) 204-3586	Paul Piazza & Son Inc .....	(817) 907-1557
Labor and Prosper, Inc .....	(956) 838-1986	Pearl South Padre Resort .....	(956) 761-6551
Law Office of Santiago Galarza .....	(956) 982-1984	PeopleReady .....	(956) 982-1443
LeBeouf Brothers Towing Company .....	(985) 594-6691	Pete's Fleet .....	(956) 491-1011
Lighthouse Docks Inc .....	(956) 943-7662	Pharr Economic Development Corporation .....	(956) 402-4332
Linda Lou Boat Corporation .....	(956) 698-1667	Pharr International Bridge .....	(956) 402-4660
Linwood Trawlers Inc .....	(956) 831-3604	Philip T. Cowen CHB .....	(956) 541-6031
Livingston International .....	(956) 504-6440	Phoenix International Holdings Inc .....	(281) 815-8050
Loera Customs Brokerage .....	(956) 831-9000	Pile Dynamics Inc .....	(623) 580-8990
Loma Alta Skeet & Trap Inc .....	(956) 371-6162	PlainsCapital Bank .....	(956) 554-7100
Lone Star National Bank .....	(956) 574-7300	Plitt Crane & Rigging .....	(956) 831-4278
Los Fresnos Chamber of Commerce .....	(956) 233-4488	Pollo's Diesel /Moto's Refrigeration .....	(956) 454-6471



Port Isabel Chamber of Commerce .....	(956) 943-2262	Snodgrass Inc .....	(956) 831-2846
Port Isabel-San Benito Navigation District .....	(956) 943-7826	SOLICE - Full Color Digital Signs .....	(956) 266-3018
Port Machine Shop .....	(956) 831-3508	South Padre Island Chamber of Commerce .....	(956) 761-4412
Port of Brownsville .....	(956) 831-4592	South Padre Island Economic Development Corporation .....	(956) 761-6805
Port of Brownsville Administration .....	(956) 831-4592	South Texas College .....	(956) 468-6782
Port of Brownsville FTZ No. 62 Grantee .....	(956) 831-4592	South Texas Electric Cooperative Inc .....	(956) 377-7125
Port of Brownsville Recycling .....	(956) 831-6707	Sunoco LP, .....	(215) 486-2208
Port Public Scale .....	(956) 838-0606	Staybridge Suites .....	(956) 504-9500
Port Warehouse Properties LP .....	(956) 831-8533	Sullivan City Economic Development Corporation .....	(956) 485-2828
Posey International .....	(713) 672-1985	T.D. American Limestone Products LLC .....	(956) 336-9261
Purata Trawlers Inc .....	(956) 233-9451	TCS Brokerage .....	(956) 544-4575
Quality Inn .....	(956) 621-3299	TLO Logistics .....	(956) 831-7665
Quality Weighing Services Inc .....	(956) 831-8253	Taqueria Sylos .....	(956) 346-0430
Quantum-Mechanical Contractors LLC .....	(956) 513-1849	Terracon Consultants Inc .....	(956) 283-8254
R&D Personnel .....	(956) 971-0152	Terrier Transportation .....	(956) 831-9954
R. Soto Transport Truck .....	(956) 592-5669	Texan Cement .....	(956) 838-9115
RGV Partnership .....	(956) 968-3141	Texas A&M University Higher Education Center at McAllen .....	(956) 271-1300
RGV Pump & Equipment LLC dba Oil Runners .....	(956) 399-1400	Texas A&M University Kingsville .....	(361) 593-2111
RO Engineering PLLC .....	(956) 513-1849	Texas Best Recycling LLC .....	(956) 831-8300
RM Walsdorf Inc .....	(956) 831-3984	Texas Community Bank .....	(956) 542-7333
Raba Kistner Consultants Inc .....	(956) 682-5332	Texas Economic Development Corporation .....	(512) 936-0100
Rabalais I & E Constructors .....	(361) 242-3121	Texas Gas Service .....	(512) 370-8220
RARE Import-Export LLC .....	(956) 504-3133	Texas Inn Brownsville .....	(956) 542-5501
Raymondville Chamber of Commerce .....	(956) 689-1864	Texas LNG LLC .....	(832) 849-4920
Raymondville Economic Development Corporation .....	(956) 689-1860	Texas Marine Ventures Inc .....	(956) 943-1435
Rentfro, Irwin & Irwin Law Firm PLLC .....	(956) 542-4329	Texas Ports Association .....	(713) 670-2482
Renoworks LLC .....	(956) 513-1849	Texas Shrimp Association .....	(956) 831-6650
RescueGear Inc .....	(800) 321-8022	Texas Southmost College .....	(956) 295-3600
Residence Inn by Marriott .....	(956) 350-8100	Texas State Technical College .....	1 (800) 852-8784
Reyes Marine Industries Inc .....	(956) 838-1219	The Port Occupational and Medical Clinic .....	(956) 541-5231
Ricardo Gonzalez Customs Broker LLC .....	(956) 831-9651	The University of Texas Rio Grande Valley .....	1 (844) 288-8748
Rio Grande City Economic Development Corporation .....	(956) 487-3476	Transcontinental Distribution Services .....	(956) 832-0773
Rio Grande Council Boy Scouts .....	(956) 423-0250	TransMontaigne Operating Company LP .....	(956) 831-3531
Rio Grande LNG LLC .....	(713) 574-1880	Transporte Internacional Lopez Ochoa SA de CV .....	(956) 838-2252
Rodco Marine Supply Inc .....	(956) 831-8271	Transpuga SA de CV .....	011-52-444-824-7533
Rodiciel Inc .....	(956) 572-8325	TW LaQuay Marine, LLC .....	(956) 552-2010
Roser & Cowen Logistical Customs Services LTD .....	(956) 831-8533	Two Fishing Friends Inc .....	(956) 572-7658
Roser Customs Service Inc .....	(956) 546-5544	U.S. Coast Guard MSD Brownsville .....	(956) 832-0517
Royal Danish Consulate .....	(713) 622-9018	UTI, United States Inc .....	(956) 831-4222
Rubio Trucking .....	(956) 545-9325	Union Pacific Railroad .....	(281) 350-7592
ST Marine .....	(956) 831-7557	Valero Brownsville Terminal LLC .....	(210) 345-3206
Safe Boats International .....	(360) 674-7161	Valley Federal Credit Union .....	(956) 546-3108
San Benito Chamber of Commerce .....	(956) 361-9111	Valley Lubricants Inc .....	(956) 831-4123
San Benito Economic Development Corporation .....	(956) 361-3800 ext. 304	Vulcan Construction Materials LP .....	(956) 831-8888
San Juan Economic Development Corporation .....	(956) 516-3897	Welding Works International .....	(956) 838-5636
Sanchez, Whittington, Wood & Dijkman LLC .....	(956) 546-3731	Wells Fargo.....	(956) 547-1600
SA Recycling/SteelCoast .....	(956) 509-2031	Weslaco Area Chamber of Commerce .....	(956) 968-2102
Schaefer Stevedoring & Logistics .....	(956) 831-4007	Weslaco Economic Development Corporation .....	(956) 969-0838
Sea Breeze Marine Inc .....	(956) 371-0017	West Gulf Maritime Association .....	(713) 678-7655
Seadrift Pipeline Corporation .....	(282) 966-4068	West Plains LLC .....	(832) 413-2466
Seahorse Transportation Inc .....	(956) 831-0600	Wolfe Sandblasting & Industrial Painting .....	(956) 312-1065
Seatrium AmFELS, Inc .....	(956) 831-8220	Zimco Marine LLC .....	(956) 831-7828
Shallow Stalker Boats LLC .....	(956) 943-1551	ZIWA Corporation .....	(956) 542-8167
Shallow Water Marine .....	(956) 240-4084		
Sharyland Distribution & Transmission Services LLC .....	(214) 978-8351		
Shrimp Outlet .....	(956) 831-8114		
Signet Maritime Corporation .....	(956) 838-6800		



# Pharr

International Bridge

Your Connection.  
Your Business.  
Your Bridge.

# INVESTING *Big...* ...FOR *Faster* TRADE

**Building sustainable infrastructure today to meet the needs of tomorrow.**



**Bridge Expansion (2nd Span) Project**  
*Construction starts in 2023*

**Competitive Advantage:**

- 4 Additional Lanes-F.A.S.T. Lanes
- Intelligent Traffic System
- Increased Capacity & Efficiency



**DAP 16 Project**  
*Construction starts in 2023*

**Competitive Advantage:**

- Cold Chain Streamlined Ag-Produce Inspections
- Dry Goods Process Improvements
- Increased Commercial Truck Throughput



**DAP 15 Project**  
*Construction ends in 2023*

**Competitive Advantage:**

- 2 Additional Primary Lanes & 2 Exit Lanes
- Gate-to-Gate Service for Maximum Efficiency
- Reduced Truck Wait Times



**For more information about the Pharr International Bridge, contact:**

956-402-4660  
[www.pharrbridge.com](http://www.pharrbridge.com)

Follow us on:





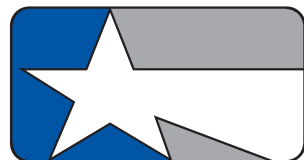


# Proud to be The Valley's Bank.

From Starr County to Cameron County, from the Rio Grande Valley to San Antonio, Lone Star National Bank is growing across South Texas. Our banking centers throughout South Texas are providing the resources and the expertise to help Texas businesses grow and prosper, communities expand and invest in the future, and individuals and families succeed in achieving their dreams.

Lone Star National Bank has provided banking services to communities in South Texas for over 40 years. An independent bank with over 3 billion in total assets and thirty-six (36) full-service Banking Centers throughout South Texas.

Come by and meet our outstanding team of bankers. Lone Star National Bank...The Valley's Bank.



**Lone Star  
National Bank<sup>SM</sup>**

## **BROWNSVILLE LOCATIONS**

3100 North Indiana Ave. (Port of Brownsville)  
2100 Boca Chica Blvd. | 3300 N. Expressway 83 | 101 America Dr.

1-800-580-0322

[www.lonestarnationalbank.com](http://www.lonestarnationalbank.com)



Member FDIC



# Green Ship Recycling

[usa.emrgroup.com](http://usa.emrgroup.com)



International Shipbreaking Limited, LLC  
Port of Brownsville, Texas



**Purchase and Recycling of all Metals, Ships, Offshore Oil Platforms, or other Marine Assets**

**Immediate Payment, Impeccable Safety Record and Customer Service**

**EU Ship Recycling Regulation Accreditation**

**Approved US Navy & US Maritime Administration Ship Recycling Contractor**

**US Navy Aircraft Carrier Recycling Capacity**

# 1-800-GO-SCRAP