

PORT OF BROWNSVILLE

the port that works



OUR COMMITMENT



JOBS

Cultivating sustainable workforce opportunities and developing human capital.



COMMUNITY

Promoting educational initiatives and improving quality of life in the Rio Grande Valley.



ENVIRONMENT

Preserving the regional ecosystem and natural resources for present and future generations.



INDUSTRY

Supporting existing industries and fostering economic growth by connecting the region with global markets.



PORT OF BROWNSVILLE



40,000 ACRES. Largest land-owning public port authority in the U.S.



Only deepwater seaport on the U.S. and Mexico Border.



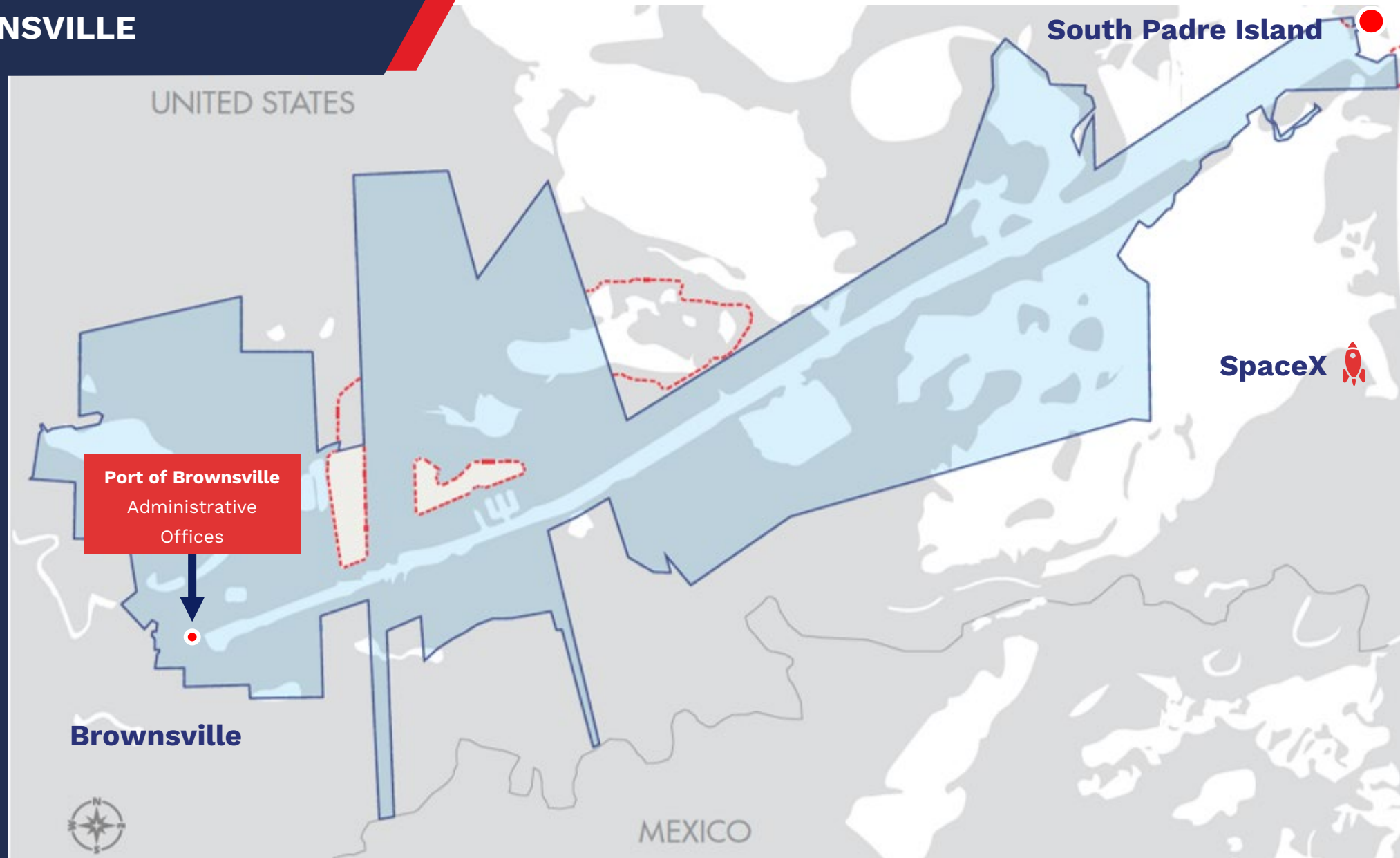
Large and growing petroleum and break bulk trades.



9,000+ local employees.



Homeport of SpaceX



PORT OF BROWNSVILLE FACILITIES

ACCESS TO NATIONWIDE TRANSPORTATION

INTERSTATES & HIGHWAYS

- I-69E; I-69C; I-2; SH 550 (I-169)

RAIL

- Union Pacific, BNSF, KCSM, BRG

GULF INTRACOASTAL WATERWAY

PIPELINE CONNECTIVITY TO U.S. & MEXICO

DOCKS

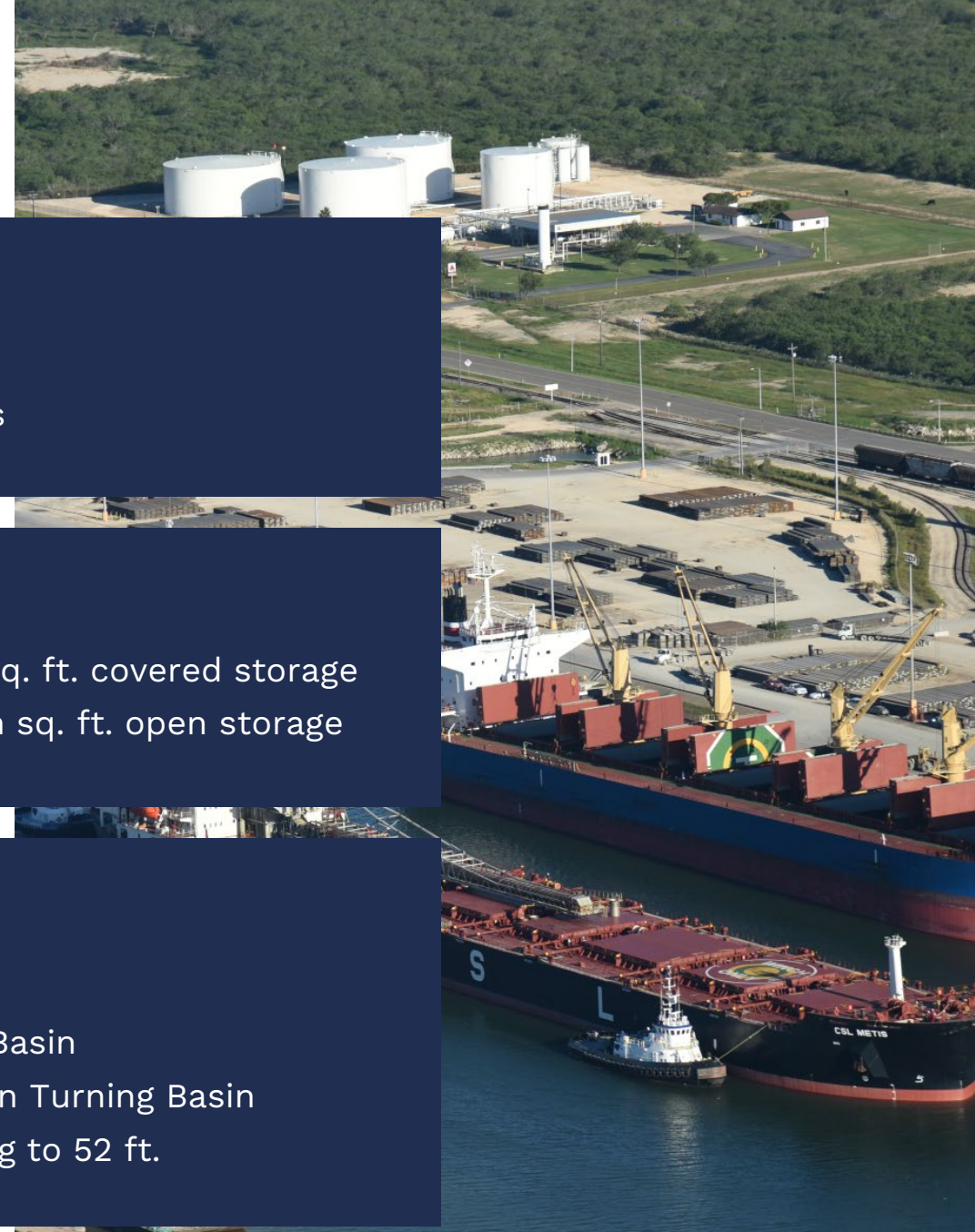
- 13 Cargo Docks
- 6 Liquid Cargo Docks

STORAGE

- More than 1 million sq. ft. covered storage
- More than 3.5 million sq. ft. open storage

WATER DEPTHS

- 44 ft. at entrance
- 42 ft. up to Turning Basin
- 36.5 ft. vessel draft in Turning Basin
- Authorized deepening to 52 ft.



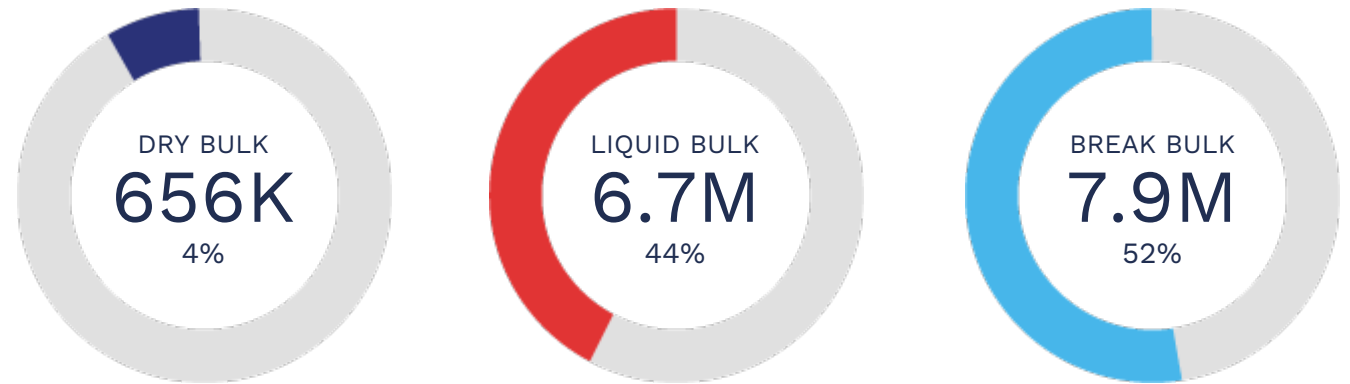
GLOBAL CONNECTIVITY



CARGO TONNAGE TOTAL FY2022

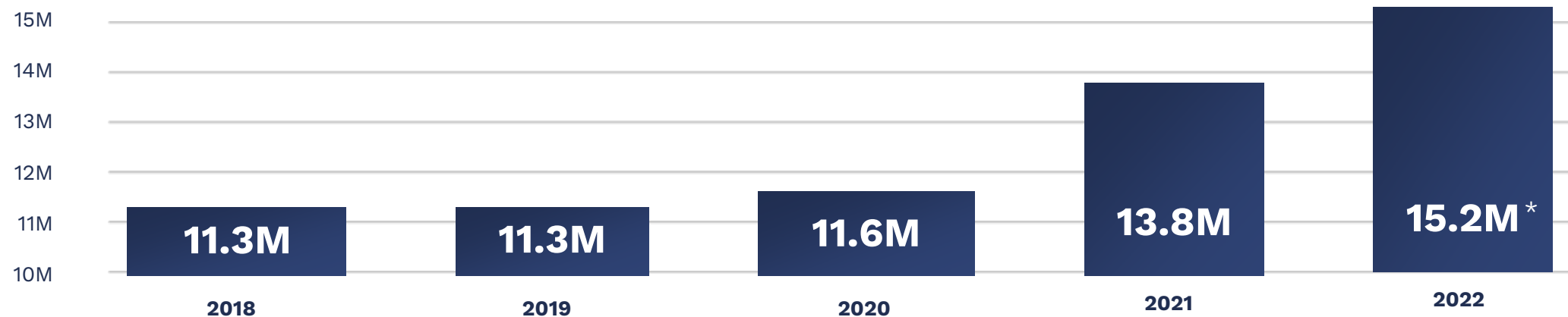
15.2M*

CARGO MOVEMENT 2022



Waterborne: 9.9 Million | Non-Waterborne: 5.3 Million

CARGO TONNAGE 2018 -2022



**Unaudited*

MULTIMODAL LOGISTICS



72,616

**RAILCAR
MOVEMENTS**

FY 2022



438,000

**TRUCK
MOVEMENTS**

FY 2022



1,757

**VESSEL
CALLS**

FY 2022



2.5M

**COMMODITIES
VIA PIPELINE**

FY 2022



FOREIGN TRADE ZONE NO. 62



TOP 2

Out of the 193 FTZs
in the nation for the
value of exports.



+ \$5.2B

In exported goods.



+ \$4.5B

In imported goods.



ECONOMIC IMPACT



51,000

Jobs Created by Port's
Maritime Activity



\$2.6B

Annually Into the
Rio Grande Valley



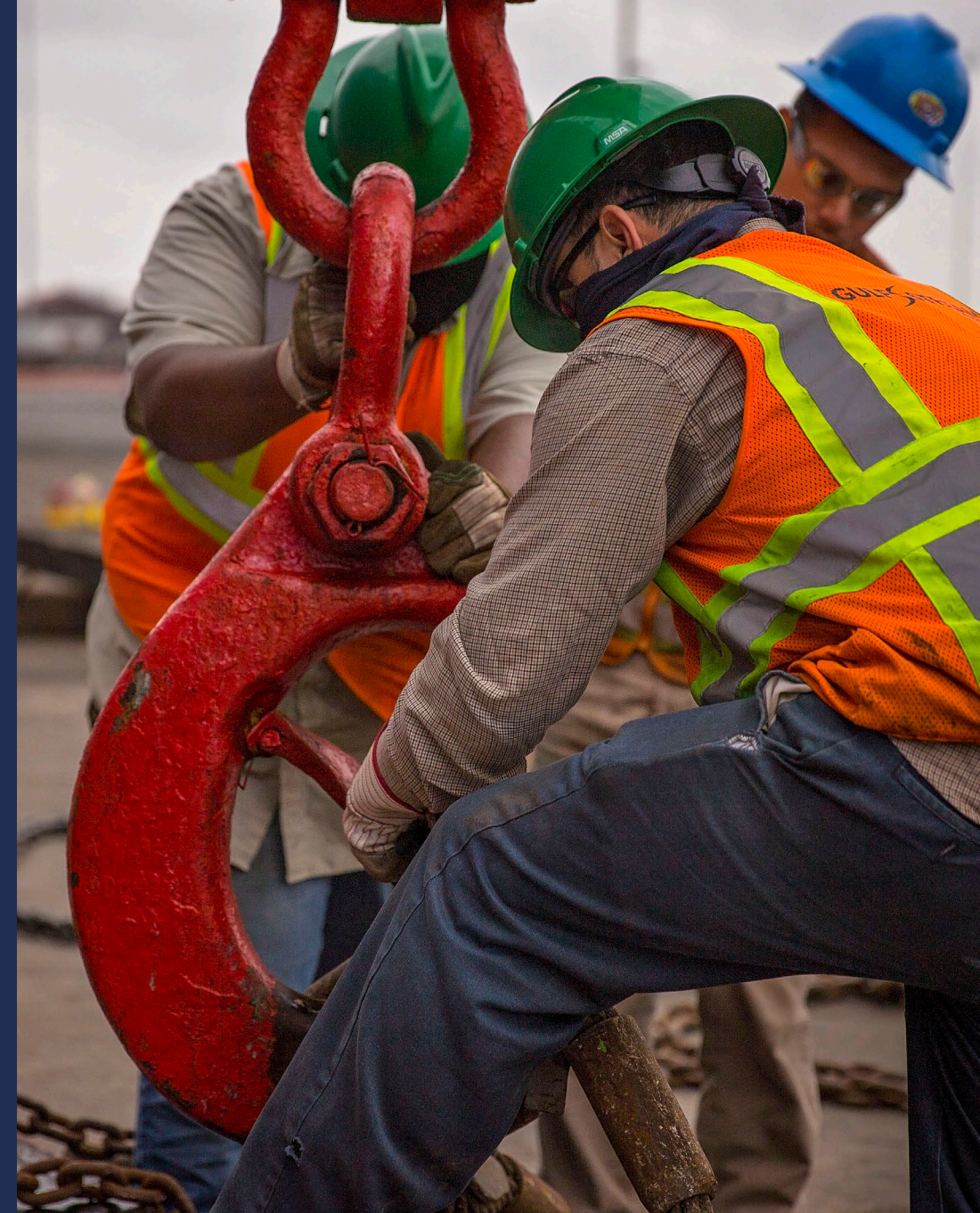
\$3B

Total Economic Activity



9,000+

Direct, Indirect,
and Induced Jobs



SHIPBUILDING ONLY PLACE IN TEXAS

Keppel AmFELS is **the only major Jones Act shipbuilding yard in Texas.**

- Finalizing two 774-foot-long containerships.
- Building the largest hopper dredge in the U.S.
- Building the first Jones Act compliant offshore wind turbine installation vessel.



SHIP RECYCLING

Capturing over 85 percent of the nation's ship recycling business, where U.S. Navy, MARAD and commercial ships berth for the last time.

The Port of Brownsville is the first and only site in U.S. to gain accreditation from the European Union to recycle their ships.



USS Kitty Hawk arriving to port.

CROSS BORDER TRADE WITH MEXICO

WIND ENERGY

The Port of Brownsville ranks among the leading U.S. ports capable of receiving, storing and moving massive components for the wind energy industry, including the largest windmill blades imported to the U.S. at 265-feet long. These components are transported by truck, rail, barge, and ocean-going vessels.

TOP TRADING PARTNER

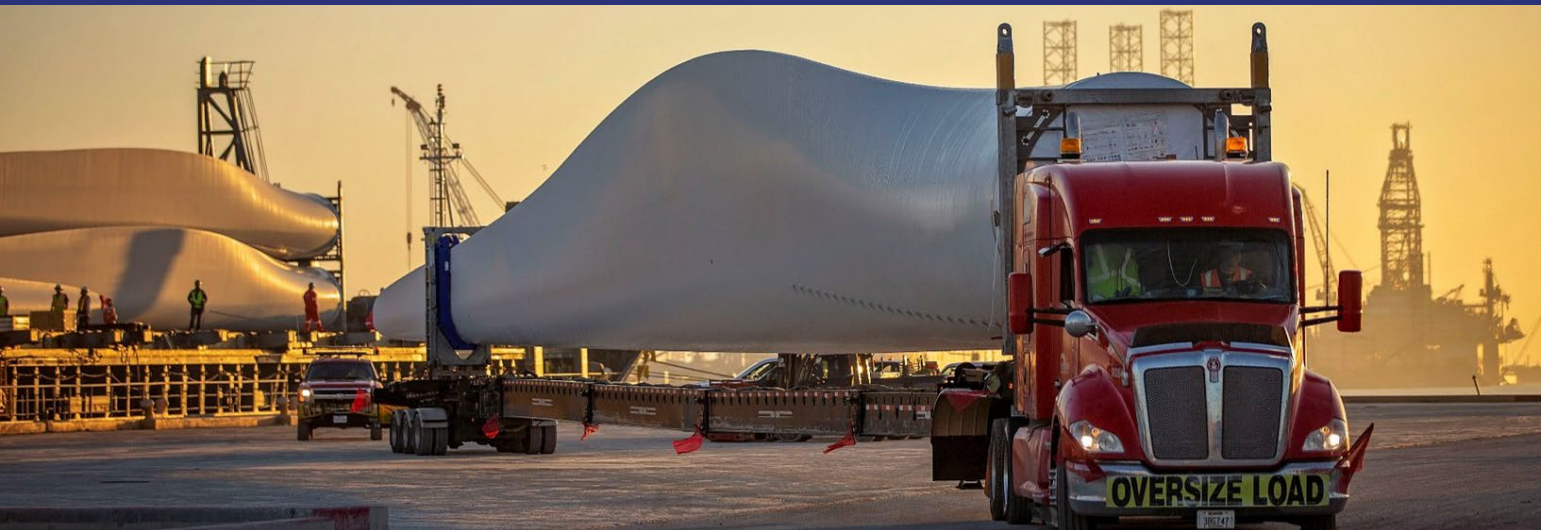
About **90% of the total commodities arriving at the Port of Brownsville ship to Mexico** including steel, petroleum-based products, aggregates, minerals and agriculture products.

PETROLEUM-BASED PRODUCTS

The port is **one of the largest exporters of refined petroleum products to Mexico** and is currently expanding its liquid storage capacity to meet growing demand.

STEEL PRODUCTS

Among top U.S. steel ports than any other **moving more steel into Mexico than any other domestic competitor** – more than 4 million tons in 2021. **Steel volume to increase to 5.3 million tons by 2023.**



CURRENT PROJECTS



CHANNEL DEEPENING

THE PLAN

The Brazos Island Harbor Channel Deepening Project will deepen Brownsville Ship Channel **from 42 feet to 52 feet.**

FEDERAL FUNDING ANNOUNCED MARCH 2022:

\$68 million under the Infrastructure Investment and Jobs Act (IIJA) Appropriations Law.

The BIH project is identified as part of the IIJA to **strengthen port and waterway supply chains and climate resilience.**

One of USACE's Public Private Partnership (P3) projects.



ECONOMIC IMPACT – RIO GRANDE LNG

(NEXTDECADE)

**Project is fully permitted for 5 trains
with capacity to export up to 27 mtpa**

CAPITAL INVESTMENT

\$11.4 BILLION

Expected EPC cost for 3 trains,
2 storage tanks, and 2 marine
berths.

5,000+

Jobs (Construction phase)

300+

Permanent Jobs

\$5M

Per year in Tax Receipts
(Operation of the 5 trains)

Source: NextDecade



FORZA STEEL PROJECT

FORZA STEEL

Structural steel fabricator manufacturing pipes and tubes, for the automotive, construction, and oil and gas industries.

\$60M

Initial Investment

150

Direct Jobs

450

Indirect Jobs

1st Phase to Begin

July 2023



NEW BUSINESSES/EXPANSIONS



WESTPLAINS

\$14.5 M grant awarded by MARAD.
Combined investment between port
and WestPlains is +\$13M to date.

Creates new cost-efficient port
option for all U.S. farmers to load
outbound international vessels from
the Port of Brownsville.



SUNOCO REFINED PRODUCTS TERMINAL

\$55M

INVESTMENT

15-20

EMPLOYEES

560,000

BARRELS
(Storage Capacity)



PESQUERIA PROJECT

Began operations in Spring 2022.
Maximizes the movement of steel
slab to Ternium's state-of-the-art
steel mill in Pesqueria, Mexico.

Volume of steel exports to Mexico
projected to increase to more than 5
million metric tons in 2023.



THANK YOU

Follow the port
that *works!*



PORT OF 
BROWNSVILLE
the port that works

