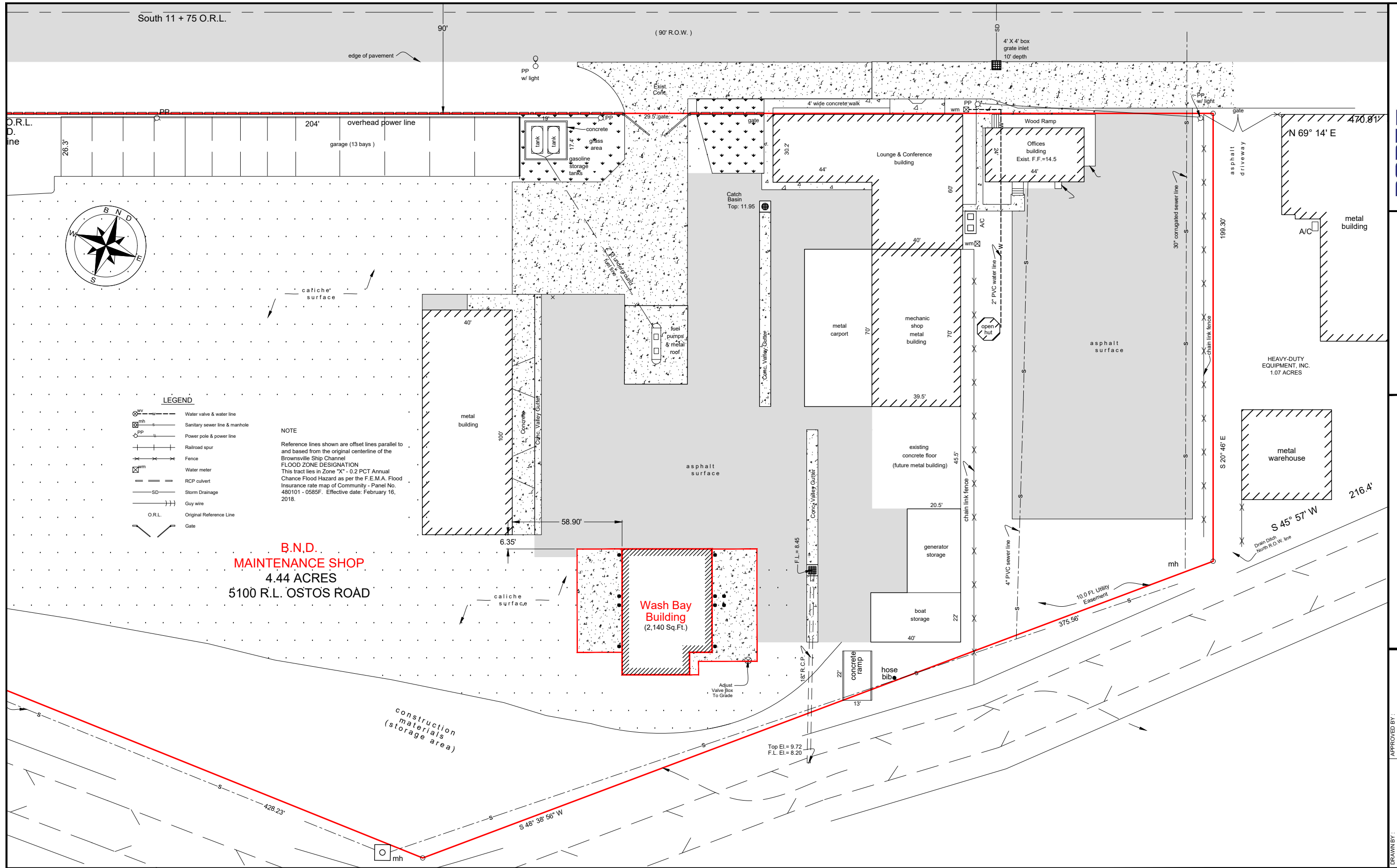


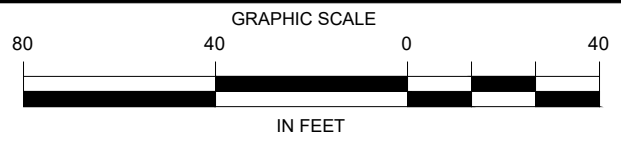
DRAWN BY:	APPROVED BY:
DATE DRAWN:	REVISION DATE:
CHECKED BY:	DWG. NO.:
SCALE:	FILE NAME:
	C:\Port\Brownsville\Shop\Wash Bays.dwg



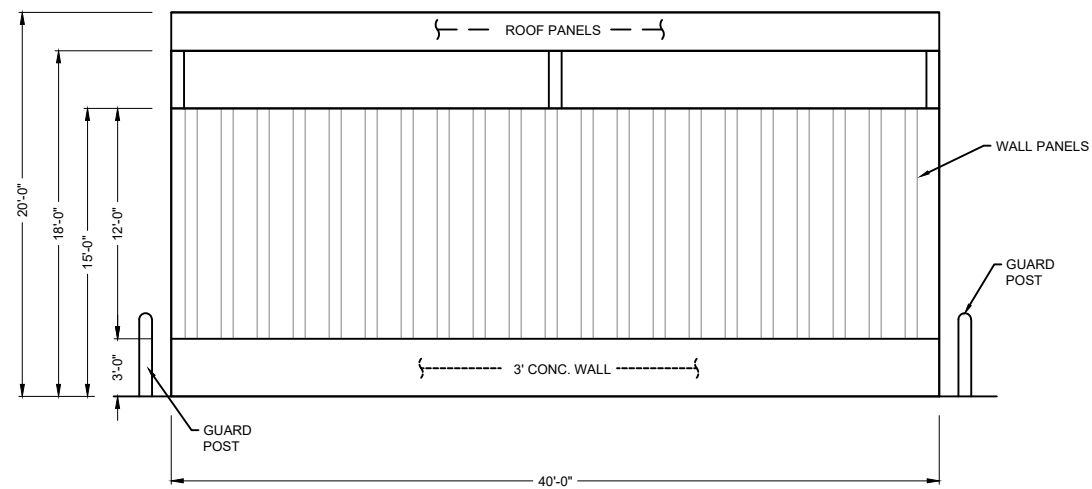
**B.N.D.
MAINTENANCE SHOP
4.44 ACRES
5100 R.L. OSTOS ROAD**

**Wash Bay Building
(2,140 Sq.Ft.)**

DATE	REVISION
07/12/2021	ISSUED FOR BIDS

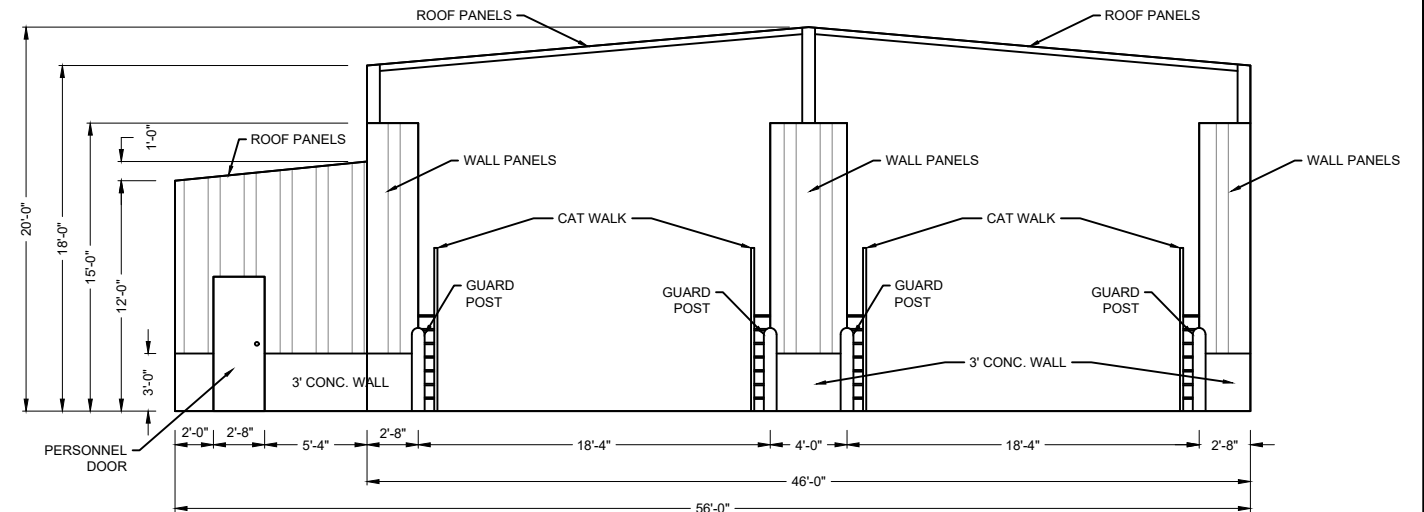


BROWNSVILLE NAVIGATION DISTRICT
ENGINEERING DEPARTMENT
BROWNSVILLE, TEXAS 78521
PHONE (956) 831-4592 1-800-378-5395
FAX (956) 831-6153
EMAIL achavez@portofbrownsville.com



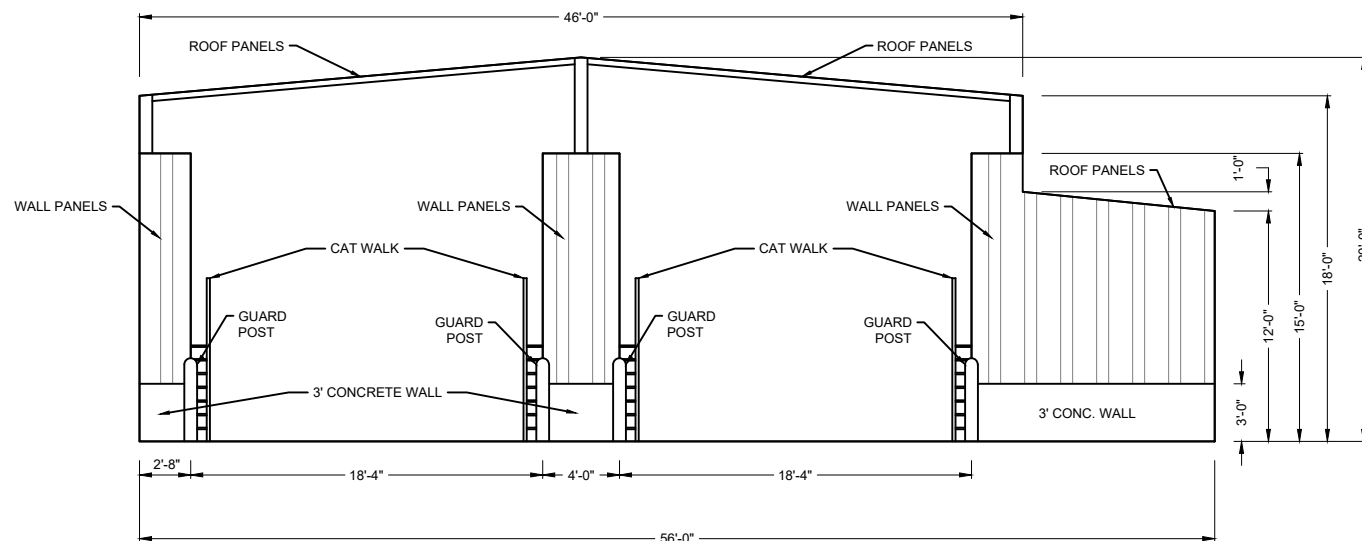
NORTH ELEVATION

Scale: 1" = 10'



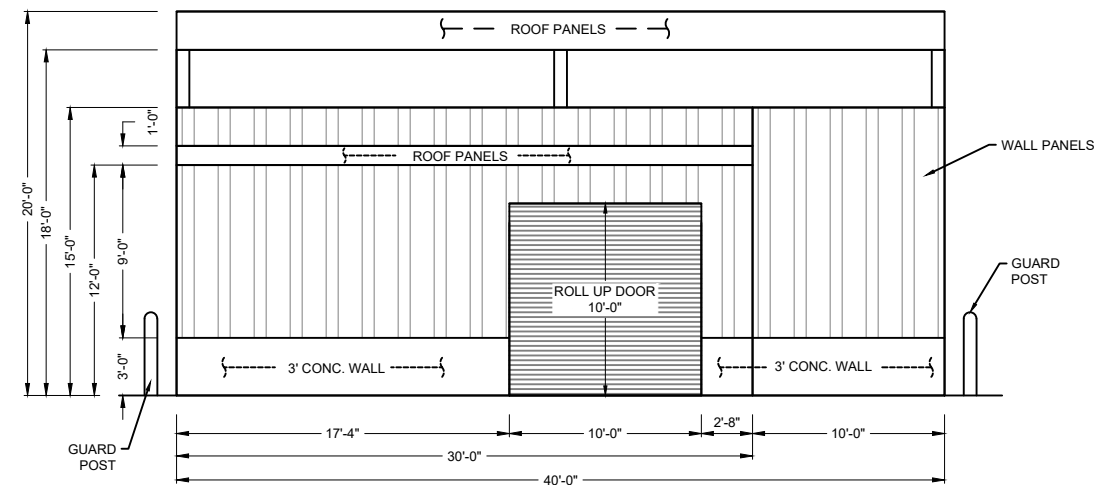
EAST ELEVATION (EXIT)

Scale: 1" = 10'



WEST ELEVATION (ENTRANCE)

Scale: 1" = 10'



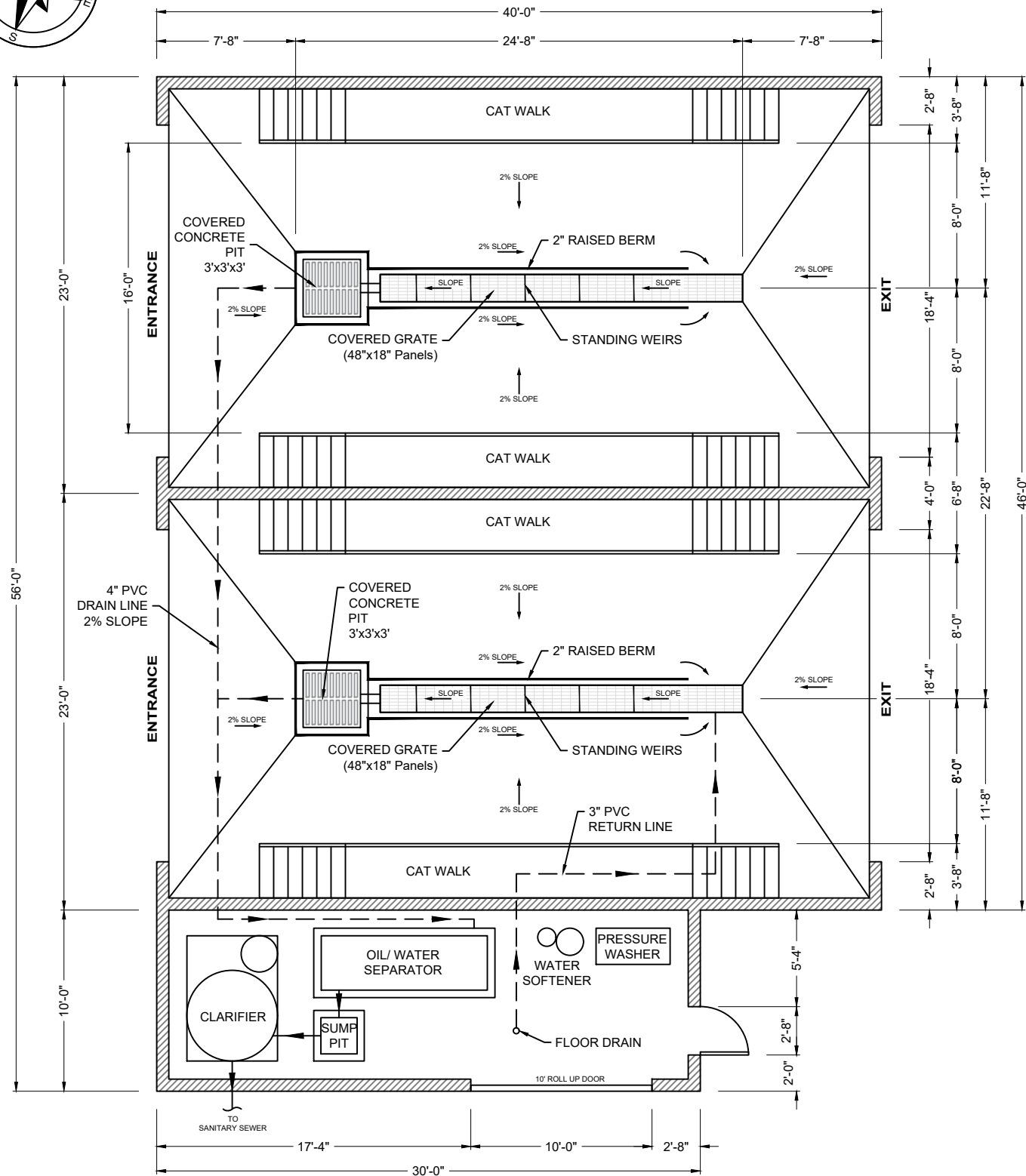
SOUTH ELEVATION

Scale: 1" = 10'

DATE	REVISION
07/12/2021	ISSUED FOR BIDS

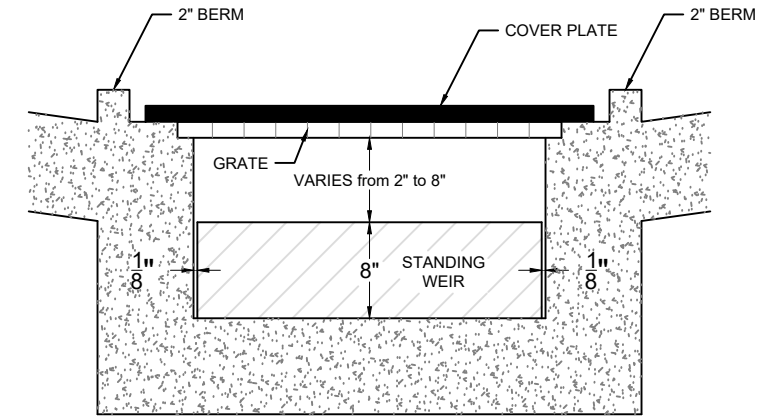
BROWNSVILLE NAVIGATION DISTRICT
ENGINEERING DEPARTMENT
BROWNSVILLE, TEXAS 78521
PHONE (956) 831-4592 1-800-378-5395
FAX (956) 831-6153
EMAIL achavez@portofbrownsville.com

DRAWN BY:	APPROVED BY:
P.E.	
DATE DRAWN:	REVISION DATE:
5/06/2021	
CHECKED BY:	DWG. NO.
A. CHAVEZ II	
SCALE:	FILE NAME:
AS SHOWN	C:\PI\Brownsville\Shop\Wash Bays.dwg



FLOOR PLAN

Scale: 1/2" = 1'

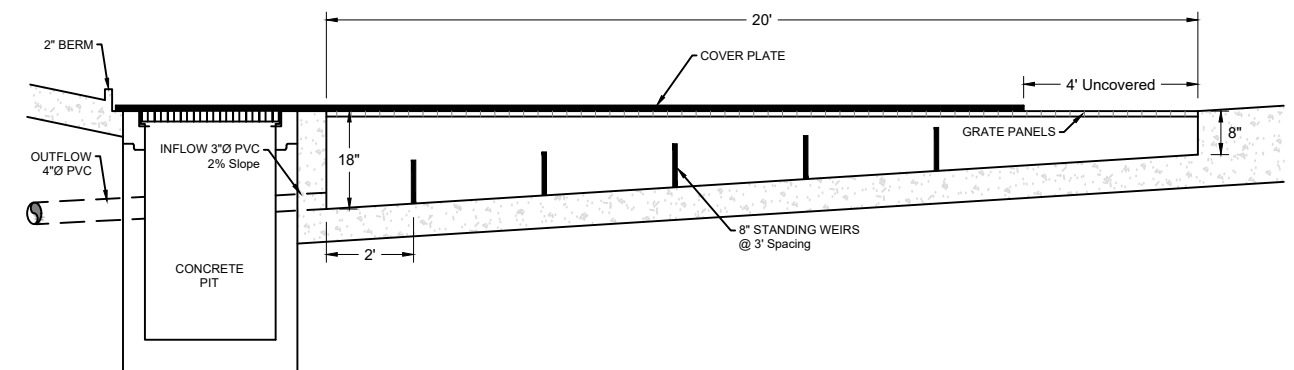


TRENCH DRAIN

Cross Section View (N.T.S.)

NOTES:

- Solids should be routinely removed. (E.g. at least every 2 - 4 weeks)
- No standing water should be allowed to accumulate in the trench.
- Standing weirs shall be 1/4" shorter than the width of the trench in order to retain solids and allow water to flow.
- Water should only enter from the shallow end of the trench.
- Use a cover plate above the concrete pit and trench drain as specified.
- For Installation Details, refer to the System's Operator's Manual. If further questions arise, please contact vendor. Victor de los Santos (956-739-1125)

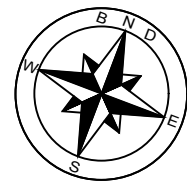
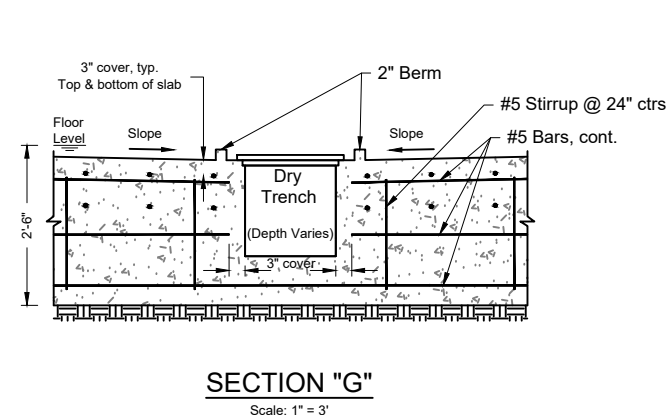
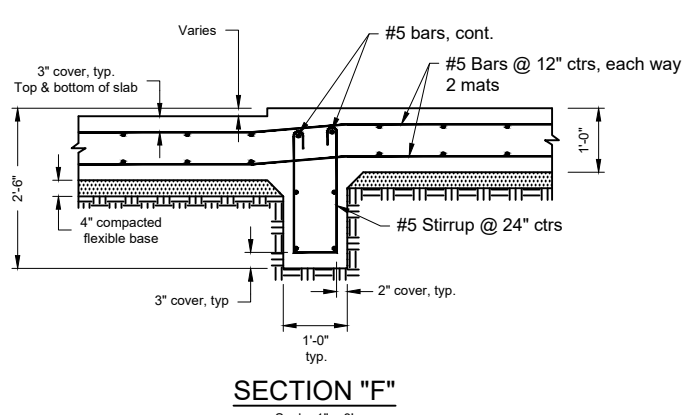
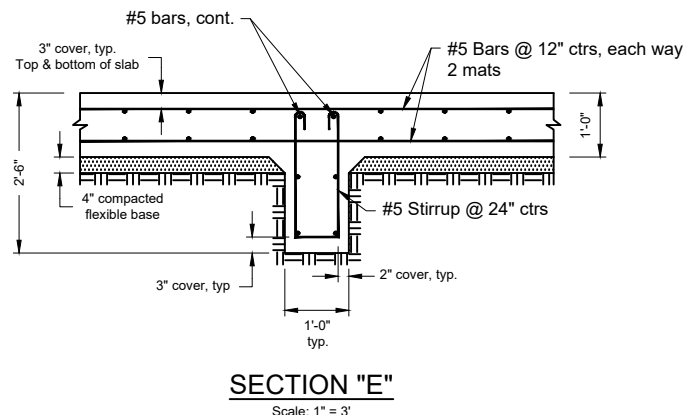
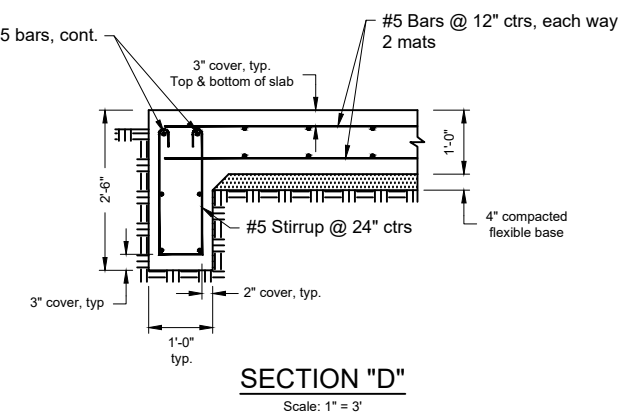
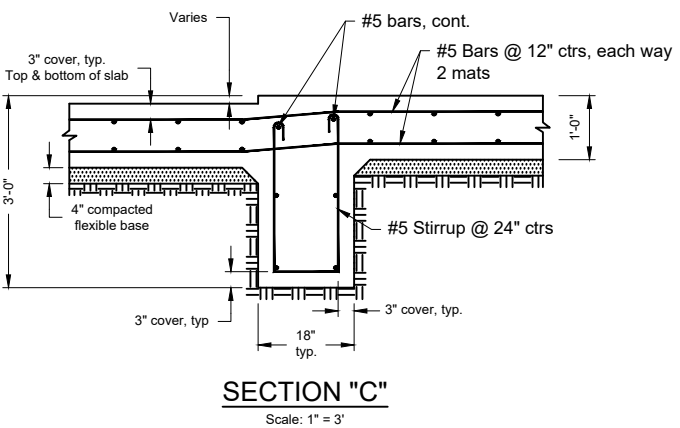
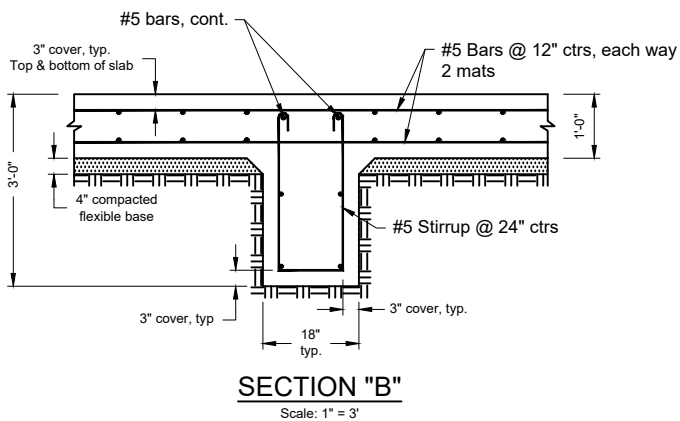
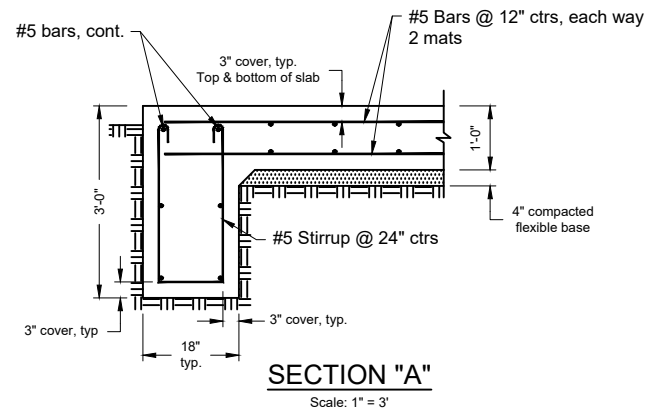


DRY TYPE TRENCH DRAIN

Section View (N.T.S.)

DATE	REVISION
07/12/2021	ISSUED FOR BIDS

DRAWN BY:	APPROVED BY:
P.E.	
DATE DRAWN:	REVISION DATE:
5/06/2021	
CHECKED BY:	DWG. NO.
A. CHAVEZ II	
FILE NAME:	SCALE:
C:\PI\BND\WGS51shop\Wash Bays.dwg	AS SHOWN



NOTES:

(12") CONCRETE SLAB WITH FIBERMESH AT 1.5 LBS. PER C.Y. MIN 5,000 PSI COMPRESSIVE STRENGTH AT 28 DAYS. SLUMP 4-6 INCHES. ALL EXPOSED CONCRETE SURFACES SHALL BE TREATED WITH CURING COMPOUND RESIN IN BASE ASTM 309 WITH PIGMENTED TINT OF FUGITICE DYE.

GRADE BEAM DIMENSIONS ARE THE MIN. SIZE REQUIRED AND MAY NOT BE CHANGED IN DIMENSION UNLESS APPROVED BY THE ENGINEER.

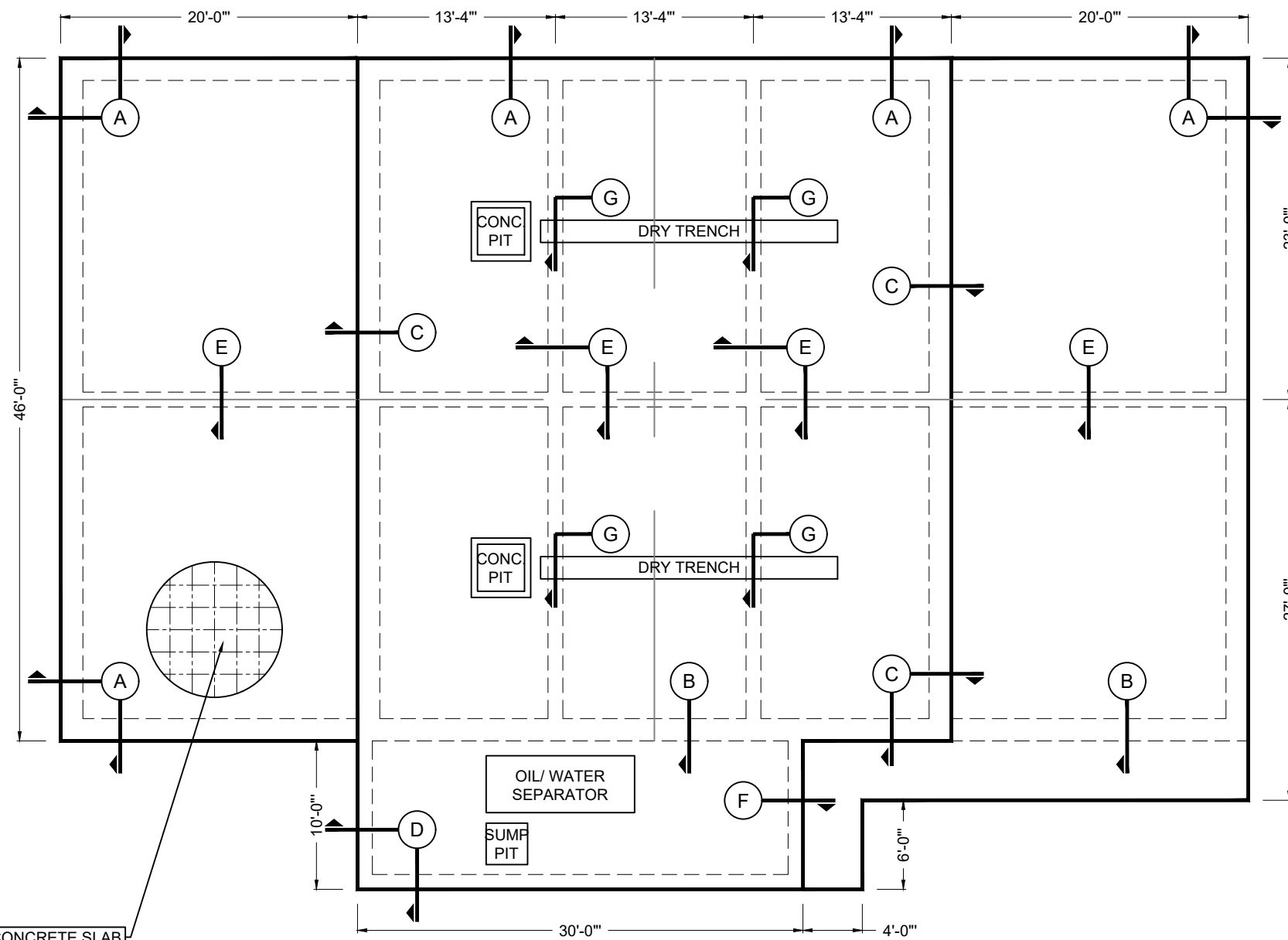
ALL CONCRETE SHALL BE WELL CONSOLIDATED AROUND ALL REINFORCING STEEL WITH THE USE OF MECHANICAL VIBRATORS.

ALL REINFORCING STEEL MUST HAVE A MINIMUM OF 2" CONCRETE COVER.

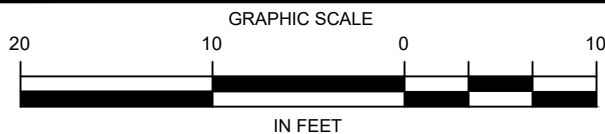
ALL ORGANIC MATERIAL ON OR NEAR GROUND SURFACE SHALL BE REMOVED FROM THE PROPOSED SLAB AREA (MIN. 2" LAYER).

(4") FLEXIBLE LIMESTONE BASE MUST BE COMPACTED TO ±95% STANDARD PROCTOR DENSITY.

12" CONCRETE SLAB
W/ #5 REBAR @ 12" CTRS
BOTH WAYS, 2 MATS
ON 4" LIMESTONE BASE

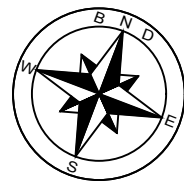


DATE	REVISION
07/12/2021	ISSUED FOR BIDS





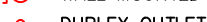
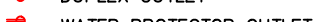



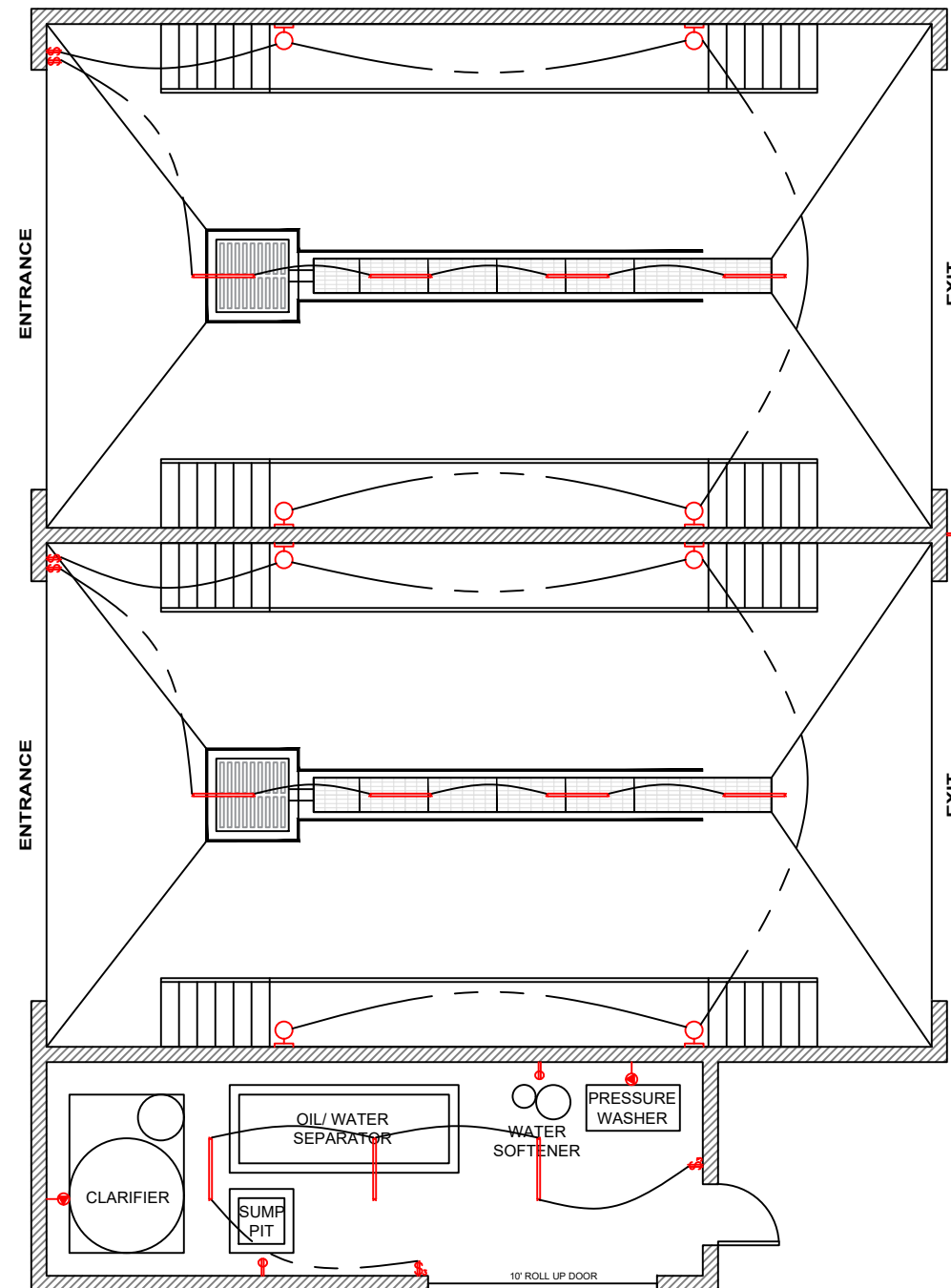
BROWNSVILLE NAVIGATION DISTRICT
ENGINEERING DEPARTMENT
BROWNSVILLE, TEXAS 78521
PHONE (956) 831-4592 1-800-378-5395
FAX (956) 831-6153
EMAIL achavez@portofbrownsville.com

APPROVED BY:	REVISION DATE:
P.E.	5/06/2021
DATE DRAWN:	DWG. NO.
CHECKED BY:	A. CHAVEZ II
FILE NAME:	C:\BND\WashBays\WashBays.dwg
SCALE:	AS SHOWN



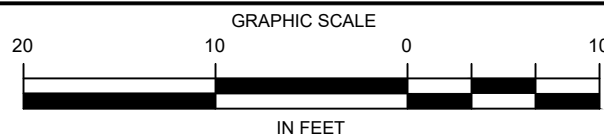
SYMBOLS LEGEND

-  SINGLE POLE SWITCH
-  THREE WAY SWITCH
-  FLOURESCENT LIGHT FIXTURE
-  WALL MOUNTED FIXTURE
-  DUPLEX OUTLET
-  WATER PROTECTOR OUTLET
-  240 RECEPTACLE OUTLET



ELECTRICAL PLAN

Scale: 1 1/2" = 1'



DATE	REVISION
07/12/2021	ISSUED FOR BIDS

BROWNSVILLE NAVIGATION DISTRICT
ENGINEERING DEPARTMENT
BROWNSVILLE, TEXAS 78521
PHONE (956) 831-4592 1-800-378-5395
FAX (956) 831-6153
EMAIL achavez@portofbrownsville.com

DRAWN BY:	APPROVED BY:
DATE DRAWN:	REVISION DATE:
CHECKED BY:	DWG. NO.:
SCALE:	FILE NAME:
AS SHOWN	C:\PI\BND\WGS51shop\Wash Bays.dwg