

# **Addendum No. 1**

---

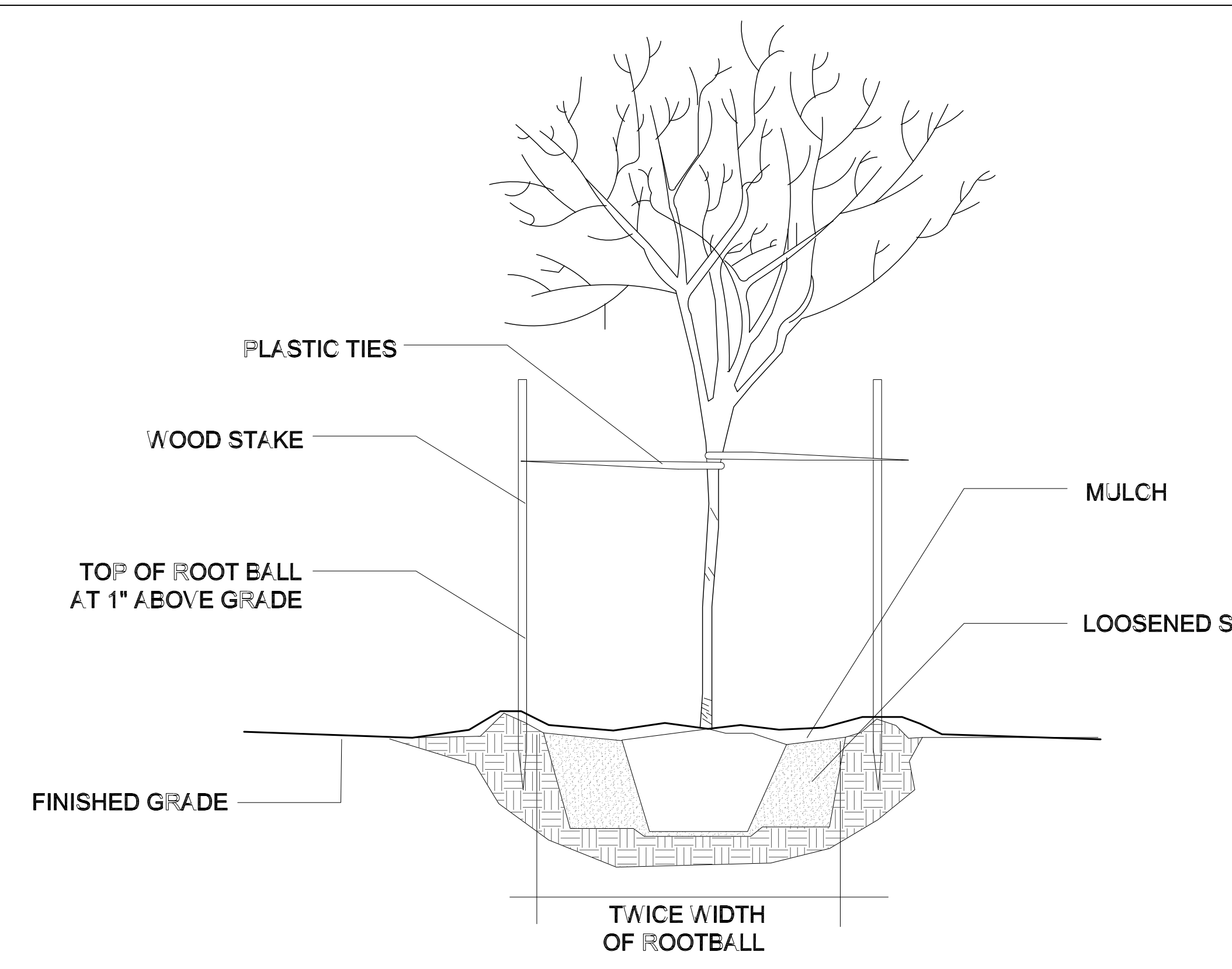
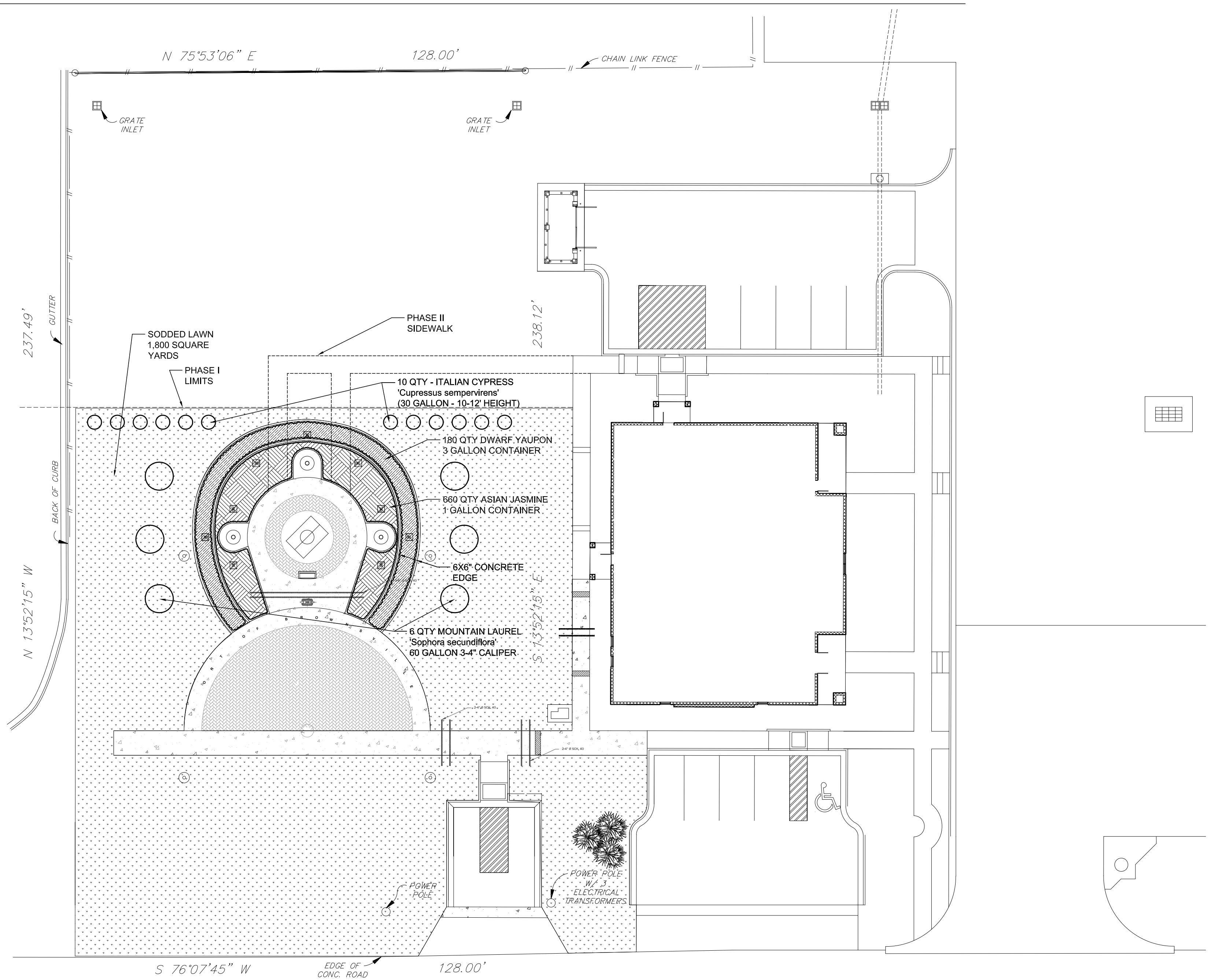
## **PORT OF BROWNSVILLE ANCHOR PARK**

January 29, 2021

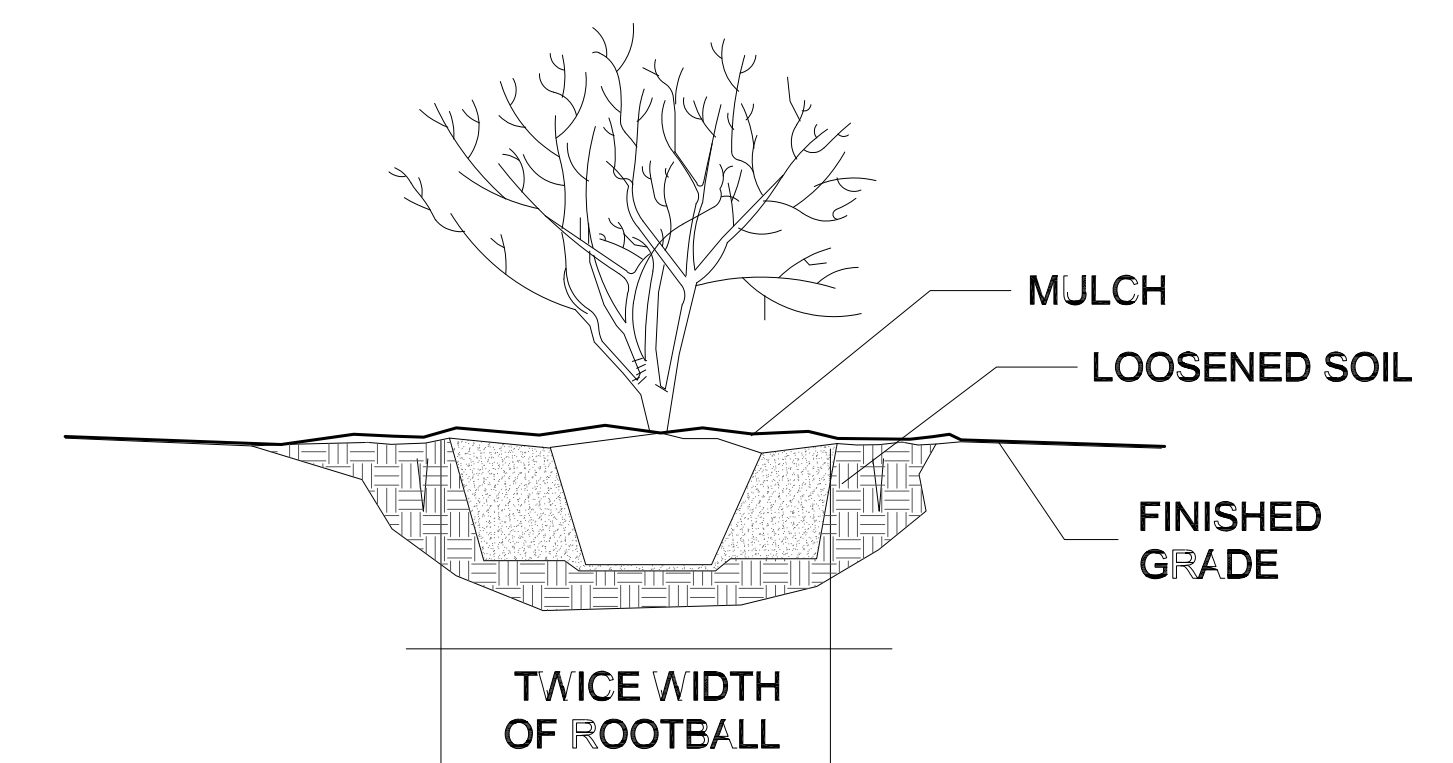
1. **ADDITIONS TO CONSTRUCTION DRAWINGS: LANDSCAPING**

- a. The attached drawing depicts the proposed landscaping improvements for the Anchor Park project. Contractors are encouraged to review and familiarize themselves with this layout.
- b. An Addendum will be issued to elaborate on the description of the proposed improvements and the associated landscaping as well as the budget provision for these endeavors.

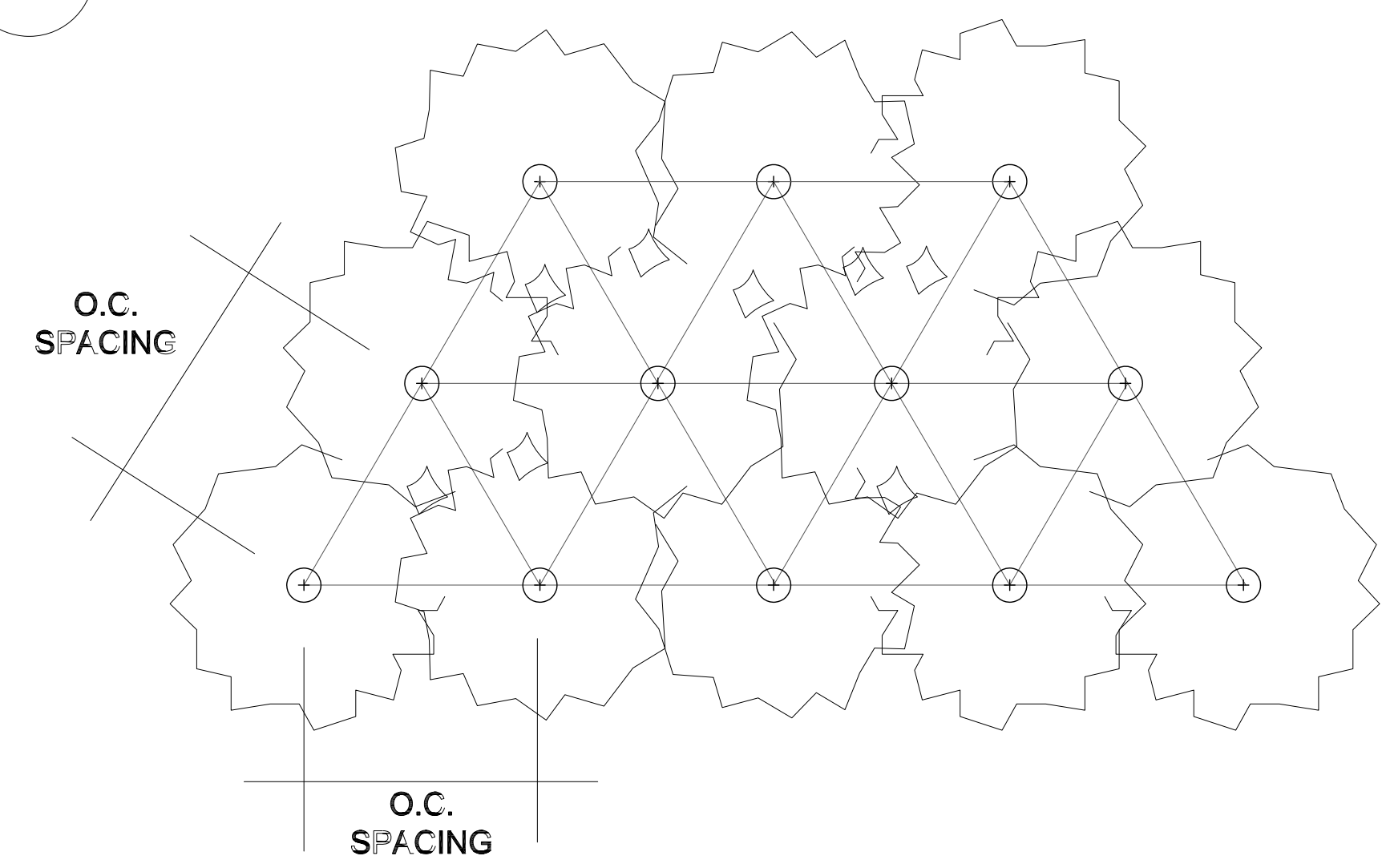
- LANDSCAPE SCHEDULE**
- ITALIAN CYPRESS 'CUPRESSUS SEMPERVIRENS' 30 GALLON CONTAINER 10-12' HEIGHT (10 QUANTITY)
  - MOUNTAIN LAUREL 'SEPHORA SECUNDFLORA' 60 GALLON CONTAINER 3-4" CALIPER (6 QUANTITY)
  - DWARF YAUPON 'ILEX VOMITORIA' 3 GALLON CONTAINER 36" D.C. (180 QUANTITY)
  - ASIAN JASMINE 'TRACHELOSPERMUM ASIATICUM' 1 GALLON CONTAINER 12" D.C. (660 QUANTITY)
  - SODDED LAWN 'STENOTAPHRUM SECUNDATUM' 1,800 SQUARE YARDS
  - 2,000 SF PLANTING MIX 12" DEEP, COMPOST / TOPSOIL MIX WITH TOP 2" HARDWOOD MULCH DEPTH
  - 6X6" REINFORCED EXTRUDED CONCRETE EDGING, TO BE 2" ABOVE FINISHED GRADE
  - TREE RINGS AND TREE STAKES PER TREE INSTALLED
  - REMOVE ALL CALICHE WITHIN LAWN / BED AREAS REPLACE WITH COMPOST / RIVER SAND MIX (18,000 SQUARE FEET)
  - IRRIGATION SYSTEM ADDITIONS / ADJUSTMENTS / SLEEVES / WITH ENOUGH ROOM FOR PHASE II ADDITION



**TREE PLANTING DETAIL**



**SHRUB PLANTING DETAIL**



**TRIANGULAR SPACING DETAIL**



**IRRIGATION NOTE**  
 AUTOMATIC IRRIGATION SYSTEM BY TEXAS LICENSED CONTRACTOR, SHOP DRAWINGS TO BE SUBMITTED BEFORE CONSTRUCTION. 4" SLEEVES INTO ALL LANDSCAPE ISLANDS 24" DEEP