

# Addendum No. 2

## OIL DOCK #6 WEST PIPE BRIDGE

February 2, 2021

### 1. RESPONSES TO BIDDERS' QUESTIONS

BIDDER'S QUESTION	J TAM's RESPONSE
1. Will holes need to be drilled in the existing structure?	Holes will need to be drilled in the existing structure in a few locations (see attached detail sketches). In most connections to the existing structure, the existing bolts will need to be replaced with longer bolts due to new top and bottom gusset plates being installed on top or bottom of existing gusset plates.
2. Where on the structure?	The new holes will all be drilled into the sides of the L3-1/2 X 3-1/2 X 3/8 angles that are columns within the truss.
3. Can the project timeline be extended from 120 calendar days to 150 calendar days?	We will allow 21 calendar days from the Notice to Proceed for review and approval of shop drawings, at which time the 120 calendar days to substantial completion will begin.

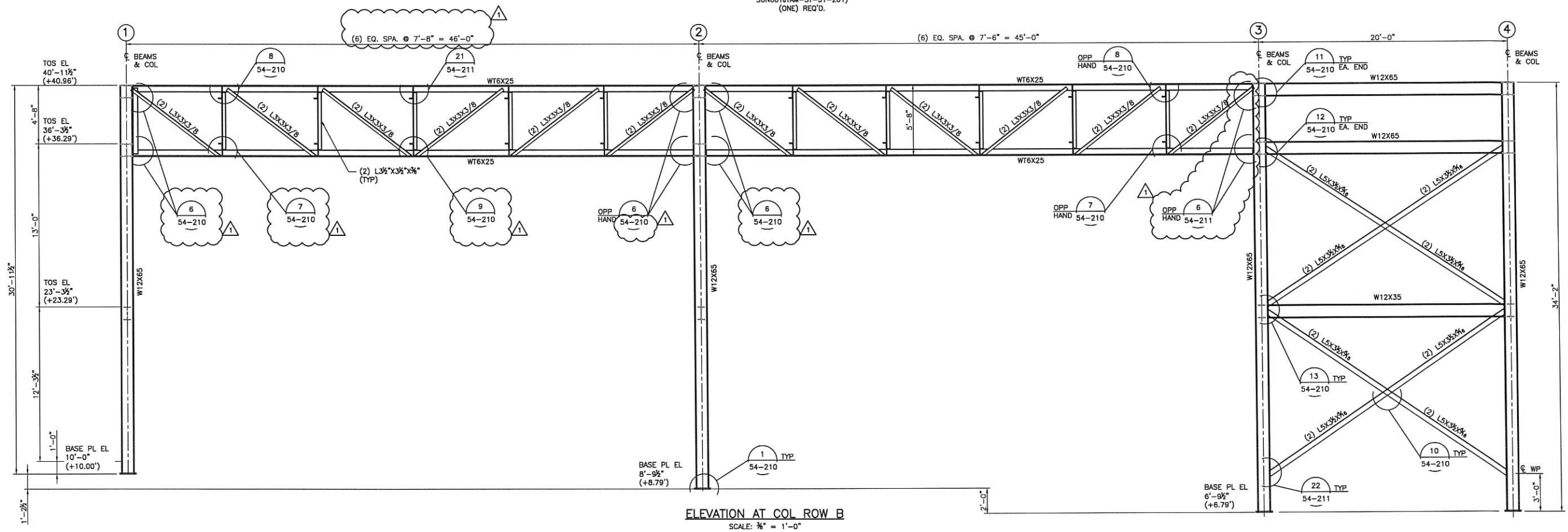
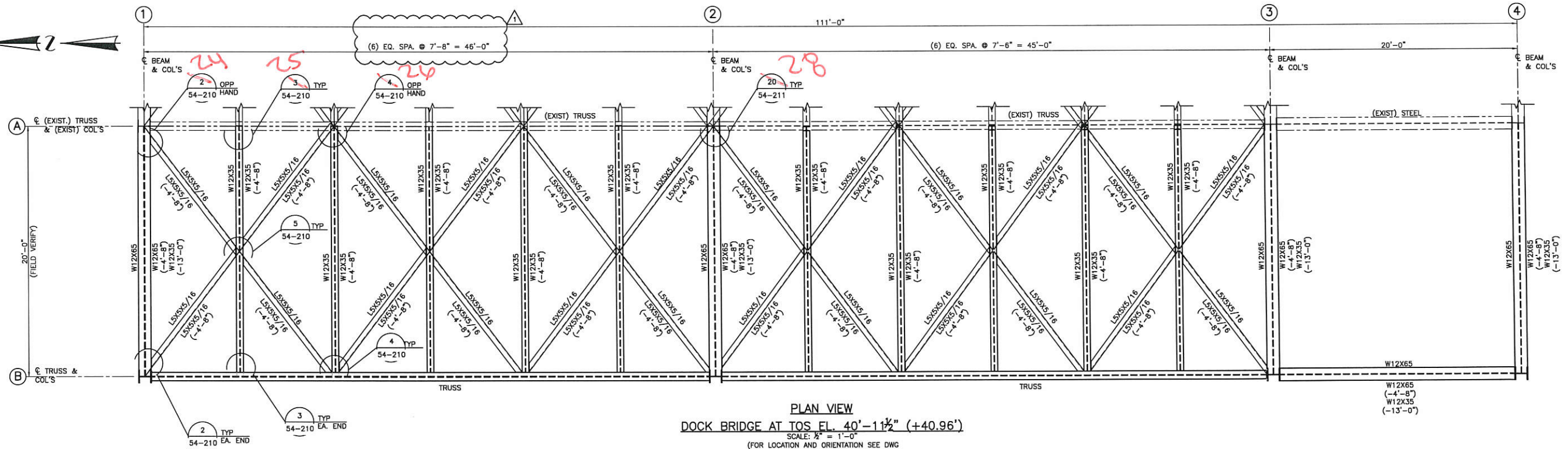
### 2. ADDITIONAL DETAILS

- a. The intent on the connections and tie-ins of the new structure to the existing structure are shown in the revised details attached to this Addendum #2.

### 3. ADDITIONAL CLARIFICATIONS

- a. **Shop Drawings Review and Approval:** After initial submittal of the Shop Drawings, Contractor should anticipate multiple iterations to achieve approval. Any required revisions and modifications to the initial submittal shall be included in the base bid price for the work, shall be subsidiary to other bid items, and shall not be paid for separately.
- b. Should review of Shop Drawings extend beyond the above mentioned 21 days due to unresponsiveness from the contractor, the owner may choose to start the 120 days at that time. However, should there be a valid reason for the delay, the owner may choose to extend the 21 days. The validity of the reason shall be determined solely by the owner.

FILENAME: G:\Projects\Sunoco\SUN-001\04\_Des\Civil-Struct\03\_Steel\02\_Drawings\SUN001JTAM-ST-54-201 PLAN VIEW DOCK BRIDGE STEEL.dwg PLOTTED: 1/19/2021 2:31:46 PM PLOTTED BY: -----



NOTES:

1. FOR GENERAL NOTES SEE DWG. SUN001JTAM-ST-50-202
2. CONTRACTOR TO VERIFY ALL DIMENSIONS, ELEVATIONS AND COORDINATES PRIOR TO FABRICATION AND INSTALLATION.
3. ALL STEEL SHALL BE GALVANIZED.

REFERENCE DRAWINGS

ISSUED FOR  
CONSTRUCTION

REV	DESCRIPTION	BY	DATE	CHK'D	APP'D	SCALE	FACILITY CODE OR ACCOUNT NO.		
							CONSTRUCTION YEAR:	BY	DATE
1	REVISED AS NOTED	JM	01/18/21	CK	CH	CHECK	CH		
0	ISSUED FOR CONSTRUCTION	JM	12/17/20	LB	CH	APPROVED	CH		
SCALE: NONE									

**SUNOCOLP**

BROWNSVILLE TERMINAL  
STEEL DETAILS  
DOCK BRIDGE-STEEL PLAN VIEW & ELEVATION

CAMERON COUNTY, TEXAS

WBS NO.

OLD DRAWING NO.

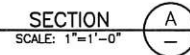
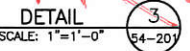
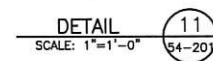
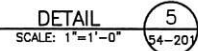
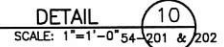
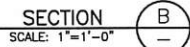
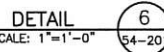
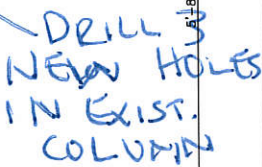
DRAWING NO.

SUN001JTAM-ST-54-201

REV. NO.

1

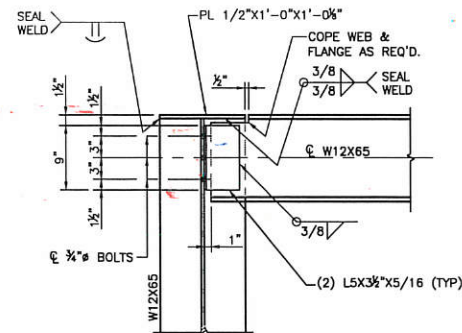




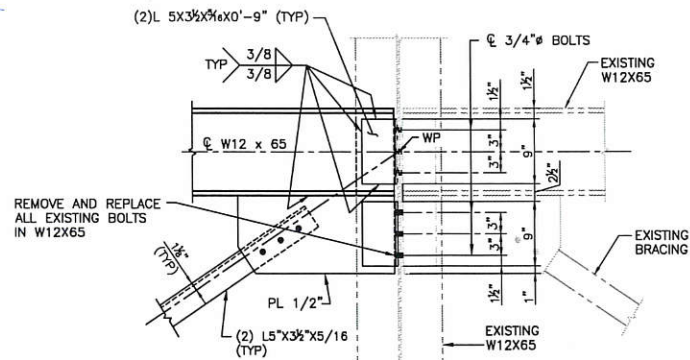
WBS NO.	
OLD DRAWING NO.	
DRAWING NO.	REV. NO.
SUN001JTAM-ST-54-210	0



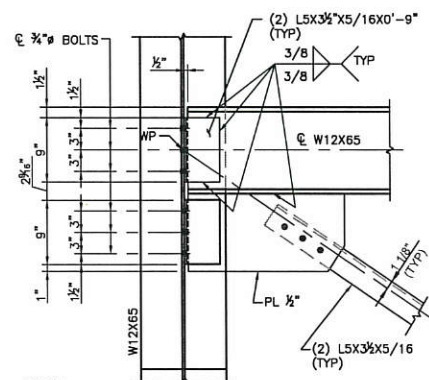
FILENAME: G:\Projects\Sanoco\SUN-001\04\_Dwg\04-Struct\03\_Steel\02\_Connection\_Details.dwg PLOTTED: 1/18/2021 2:57:22 PM PLOTTED BY: -----



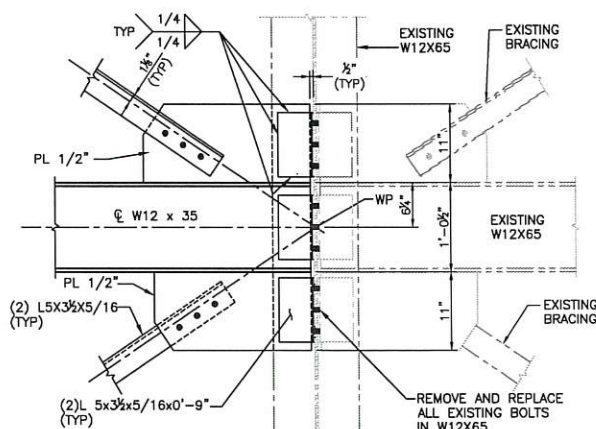
DETAIL 14  
SCALE: 1"=1'-0"  
54-202



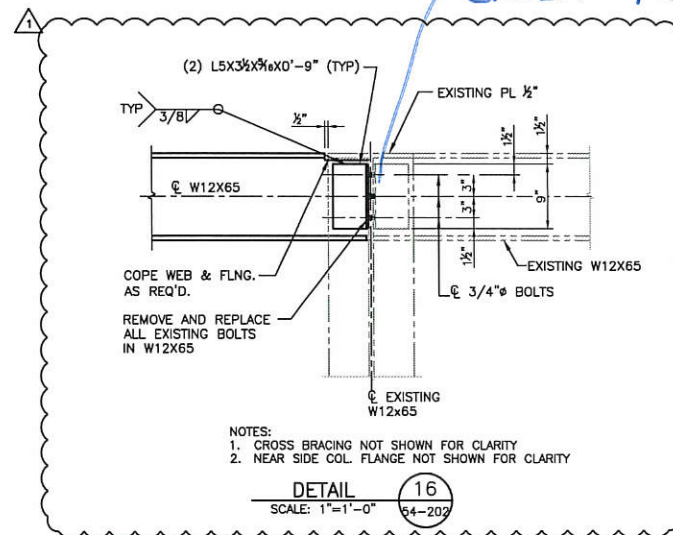
DETAIL 17  
SCALE: 1"=1'-0"  
54-202



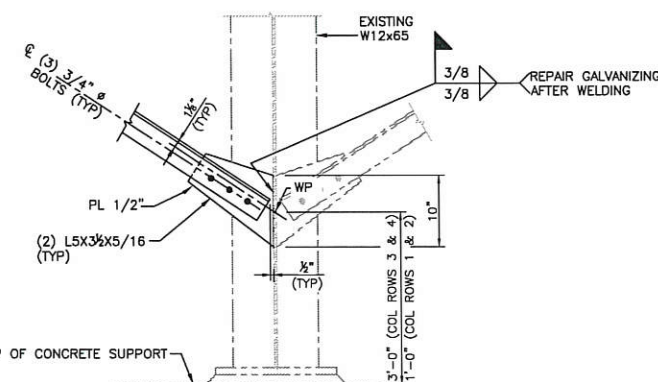
DETAIL 15  
SCALE: 1"=1'-0"  
54-202



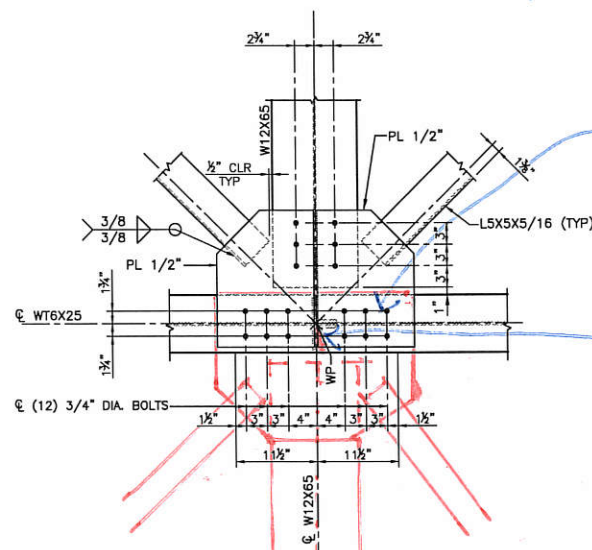
DETAIL 18  
SCALE: 1"=1'-0"  
54-202



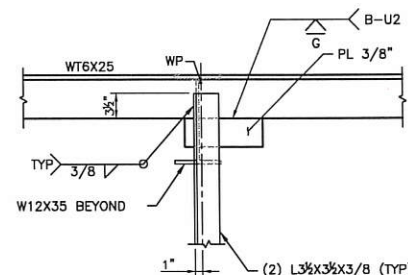
DETAIL 16  
SCALE: 1"=1'-0"  
54-202



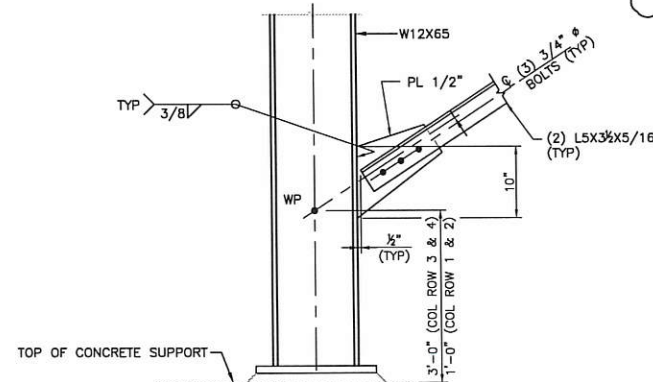
DETAIL 19  
SCALE: 1"=1'-0"  
54-202



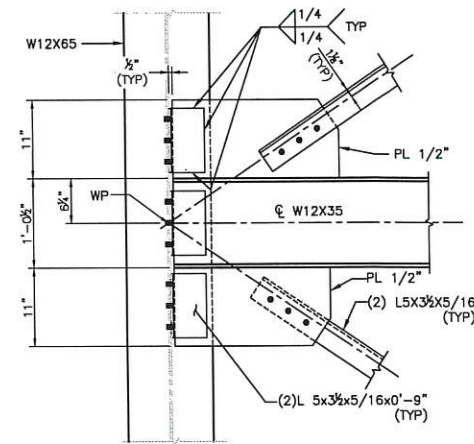
DETAIL 20  
SCALE: 1"=1'-0"  
54-202



DETAIL 21  
SCALE: 1"=1'-0"  
54-202



DETAIL 22  
SCALE: 1"=1'-0" 54-201 & 202



DETAIL 23  
SCALE: 1"=1'-0"  
54-202

UTILIZE EXIST.  
HOLES FOR TOP  
PLATE

DRILL 3  
NEW HOLES  
IN EXIST. COLUMN

UTILIZE  
EXIST. HOLES

NOTES:

1. FOR GENERAL NOTES SEE DWG. SUN001JTAM-ST-50-202
2. CONTRACTOR TO VERIFY ALL DIMENSIONS, ELEVATIONS AND COORDINATES PRIOR TO FABRICATION AND INSTALLATION.
3. ALL STEEL SHALL BE GALVANIZED.

REFERENCE DRAWINGS

ISSUED FOR  
CONSTRUCTION

REV		DESCRIPTION	BY	DATE	CHK'D	APP'D	SCALE: NONE
1	REVISED AS NOTED		JM	01/18/21	CK	CH	CHECK CH
0	ISSUED FOR CONSTRUCTION		JM	12/17/20	LB	CH	APPROVED CH

FACILITY CODE  
OR ACCOUNT NO.  
CONSTRUCTION YEAR:

DRAWN JMOORE 12/09/20

SUNOCOLP

BROWNSVILLE TERMINAL  
STEEL DETAILS  
DOCK BRIDGE-CONNECTION DETAILS

CAMERON COUNTY, TEXAS

WBS NO.

OLD DRAWING NO.

DRAWING NO.

SUN001JTAM-ST-54-211

REV. NO.

1