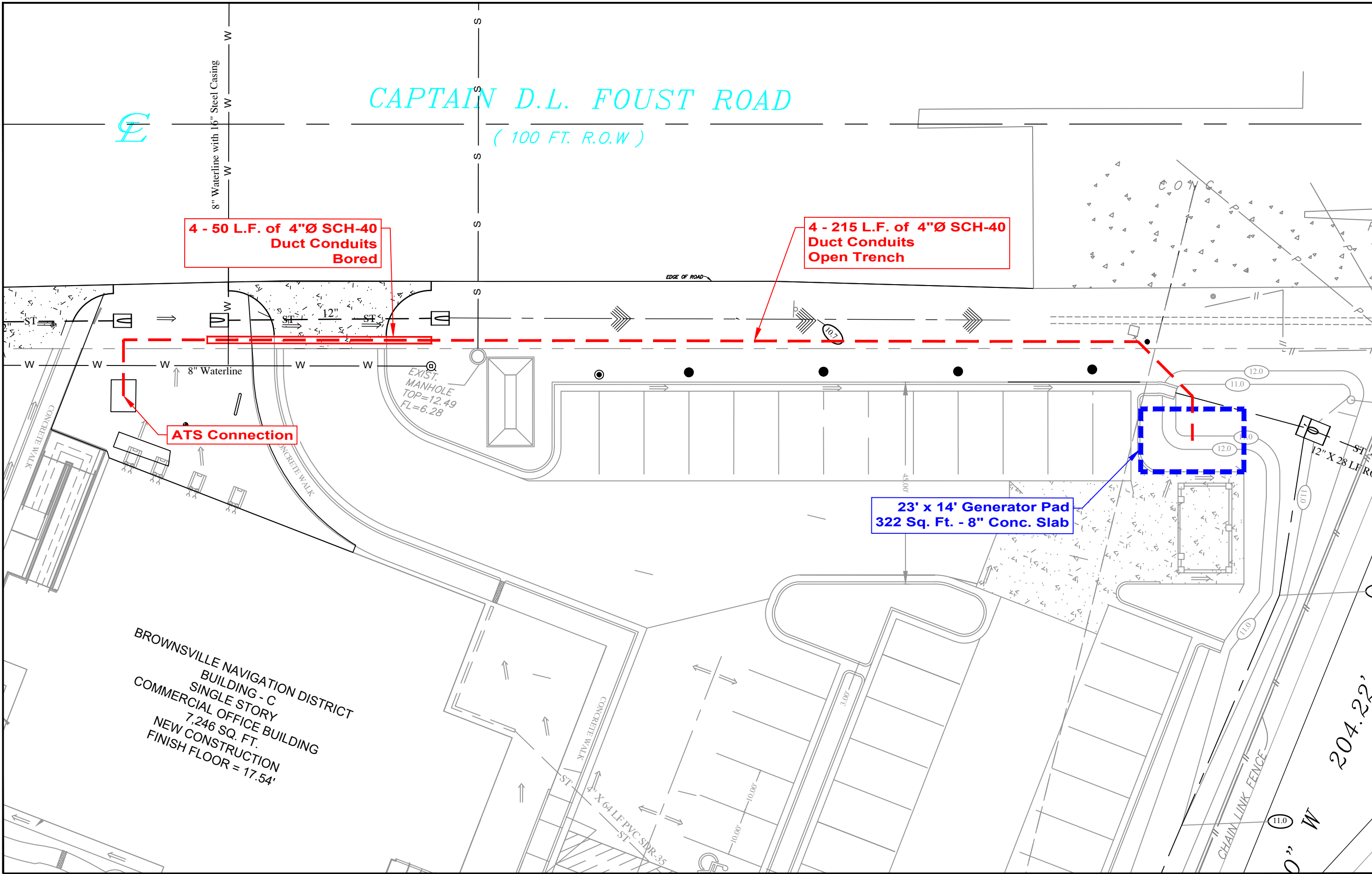
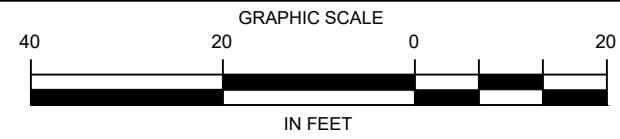


**GENERATOR PAD SITE OPTION**  
SOUTHEAST OF THE INTERSECTION  
F.M. 511 AND CAPTAIN D.L. FOUST ROAD



The Drawing is being provided to you by the BMD for information purposes only, and the BMD makes no warranty, express or implied, as to the accuracy, completeness, or reliability of the information contained herein. The user assumes all liability and responsibility for verifying the accuracy, location, dimensions, and content of the information provided, and the user agrees to indemnify and hold the BMD harmless from and against all claims, damages, and expenses, including reasonable attorneys' fees, that may be asserted against or incurred by the BMD in connection with the use of the information provided.

BROWNSVILLE NAVIGATION DISTRICT  
BUILDING - C  
SINGLE STORY  
COMMERCIAL OFFICE BUILDING  
7,246 SQ. FT.  
NEW CONSTRUCTION  
FINISH FLOOR = 17.54'

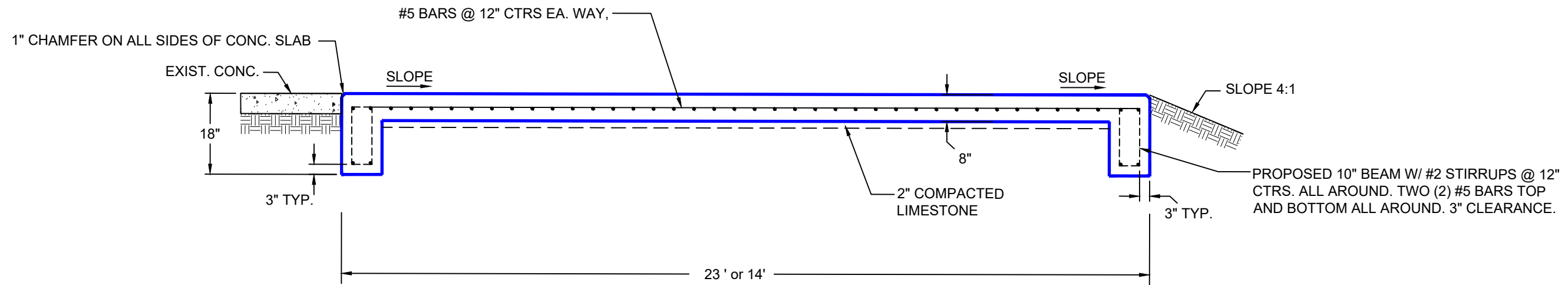


BROWNSVILLE NAVIGATION DISTRICT  
ENGINEERING DEPARTMENT  
BROWNSVILLE, TEXAS 78521  
PHONE (956) 831-4592 1-800-378-5395  
FAX (956) 831-6153  
EMAIL achavez@portofbrownsville.com

DRAWN BY : P.E.	APPROVED BY :
DATE DRAWN : JUNE 2020	REVISION DATE :
CHECKED BY : A. CHAVEZ II	DWG. NO. :
SCALE : AS SHOWN	FILE NAME : C:\MY DRAWINGS\SS922020\genj\Generator Conc Pad.dwg

PROPOSED CONCRETE SLAB NOTES:

1. PROPOSED 8" CONCRETE SLAB W/ #5 BARS @ 12" CTRS. EA. WAY CENTERED WITHIN CONCRETE SLAB.
2. CONCRETE SHALL HAVE A MINIMUM COMPRESSIVE STRENGTH AT 28 DAYS OF NOT LESS THAN 3000 PSI. 4" TO 6" SLUMP. FIBERMESH AT 2 LBS PER C.Y.
3. ALL EXPOSED CONCRETE SURFACES SHALL BE TREATED WITH CURING COMPOUND RESIN IN BASE ASTM 309 WITH PIGMENTED TINT OF FUGITICE DYE.
4. PROPOSED 10" BEAM W/ #2 STIRRUPS @ 12" CTRS. ALL AROUND. TWO(2) #5 BARS TOP AND BOTTOM ALL AROUND. 3" CLEARANCE.

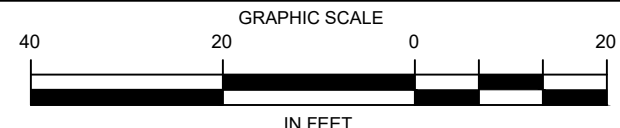


TYPICAL SECTION  
CONCRETE SLAB SECTION  
N.T.S.

**GENERATOR PAD SITE OPTION**  
SOUTHEAST OF THE INTERSECTION  
F.M. 511 AND CAPTAIN D.L. FOUST ROAD

DRAWN BY : P.E.	APPROVED BY :
DATE DRAWN : JUNE 2020	REVISION DATE :
CHECKED BY : A. CHAVEZ II	DWG. NO.
SCALE : AS SHOWN	FILE NAME : C:\MY DRAWINGS\SS92\022\engin\Generator Conc Pad.dwg

The Drawing is being provided to you by the BND for information purposes only, and the BND makes no warranty, express or implied, as to the accuracy, reliability, or completeness of the information contained herein. The user assumes all liability and responsibility for verifying the accuracy, location, dimensions, and for the security, protection, etc. of the information, instructions and property herein shown.



BROWNSVILLE NAVIGATION DISTRICT  
ENGINEERING DEPARTMENT  
BROWNSVILLE, TEXAS 78521  
PHONE (956) 831-4592 1-800-378-5395  
FAX (956) 831-6153  
EMAIL achavez@portofbrownsville.com