

Pre-Bid Meeting



BALLAST RD.

CHEMICAL RD.

OLD SH 48

OIL DOCK #6 NORTH PIPE BRIDGE

ANCHOR RD.

OIL DOCK 6 ROAD



OIL DOCK #5

OIL DOCK #6

OIL DOCK #3

BULK CARGO DOCK

CARGO DOCK 15

CARGO DOCK 16



Opening Statements

a. Welcome

b. Safety Moment

c. Sign-in Sheet

Agenda

1. Introductions

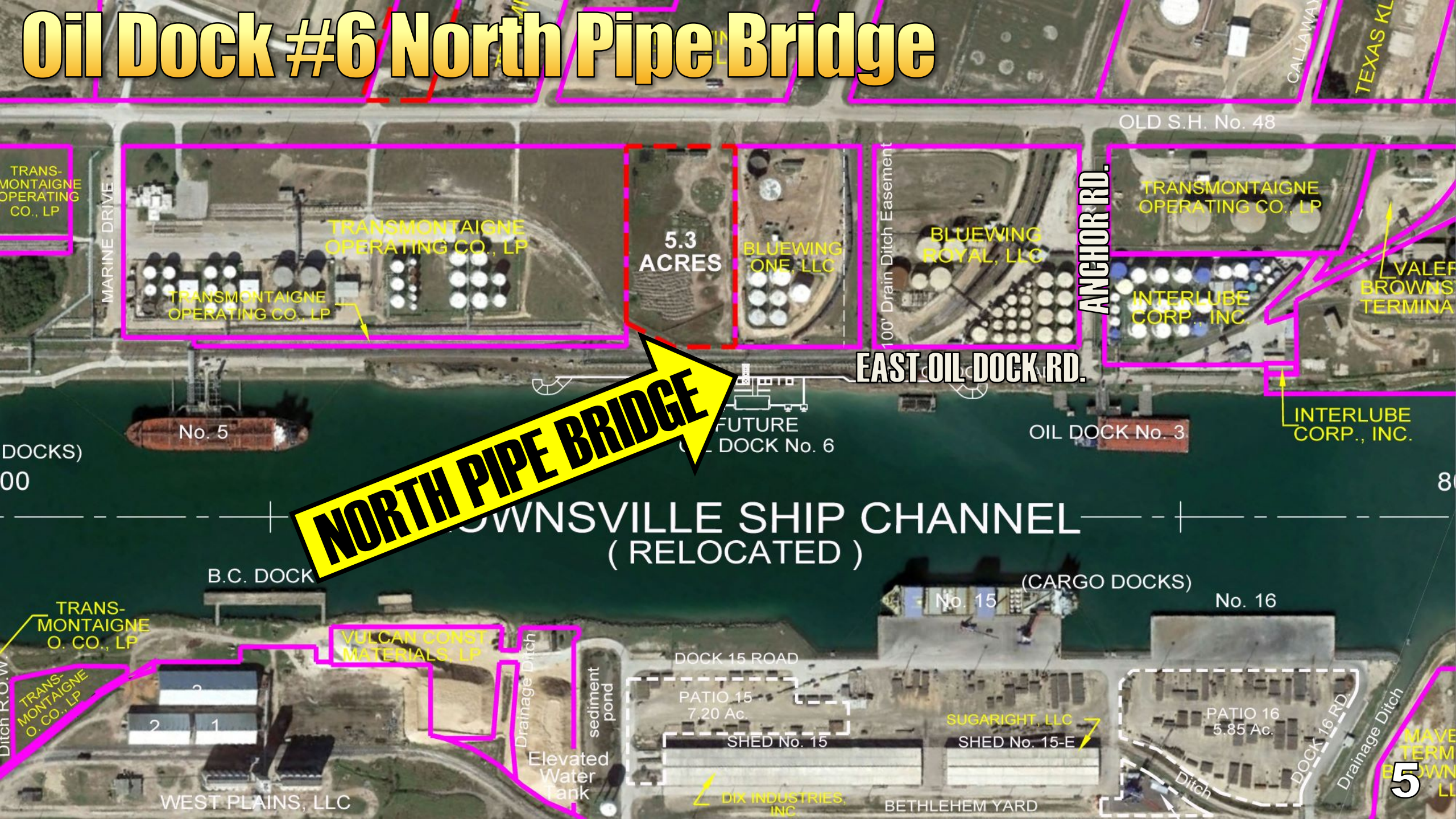
- a. **Owner: BND, dba Port of Brownsville**
Ariel Chávez II, Engineering Director
Oscar García, Maintenance Director
- b. **Project Engineer:**
HDR Engineers, Inc.
Mike Krieber, P.E.
Dan Garza, P.E.
- c. **Testing Laboratory: TBD**

Agenda

1. Introductions

- d. Project Inspectors: BND Engineering
Manuel Martínez, Eng. Manager
Indalecio Pérez, Port Surveyor
Pablo Esquivel, Drafting Coordinator
Emanuel Hernández, Eng. Tech.
- e. HDR Engineers, Inc.
Mike Krieber, P.E.
To be assigned

Oil Dock #6 North Pipe Bridge



NORTH PIPE BRIDGE

5.3 ACRES

EAST OIL DOCK RD.

ANCHOR RD.

TOWNSVILLE SHIP CHANNEL (RELOCATED)

B.C. DOCK

(CARGO DOCKS)

DOCK 15 ROAD

DOCK 16 RD.

WEST PLAINS, LLC

BETHLEHEM YARD

DIX INDUSTRIES, INC.

SUGARIGHT, LLC

VULCAN CONST. MATERIALS, LP

TRANS-MONTAIGNE O. CO., LP

TRANS-MONTAIGNE O. CO., LP

TRANSMONTAIGNE OPERATING CO., LP

BLUEWING ONE, LLC

BLUEWING ROYAL, LLC

INTERLUBE CORP., INC.

INTERLUBE CORP., INC.

VALEF BROWNS TERMINA

TRANSMONTAIGNE OPERATING CO., LP

TRANSMONTAIGNE OPERATING CO., LP

TRANSMONTAIGNE OPERATING CO., LP

No. 5

FUTURE DOCK No. 6

OIL DOCK No. 3

No. 15

No. 16

PATIO 15

PATIO 16

SHED No. 15

SHED No. 15-E

5

Agenda

2. Project Components

- a. Contractor's Submittals
- b. Mobilization and deliveries
- c. Install Concrete Filled Pipe Piles
 - 1. Stake-out and confirm locations
- d. Install Concrete Beam
- e. Install Pipe Bridge Elements
 - 1. Tie into existing structure

Oil Dock #6 North Pipe Bridge

EXISTING PIPE BRIDGE

PROP. PIPE BRIDGE

AREA OF PROP. PIPE BRIDGE

Oil Dock #6 North Pipe Bridge

PROP. PIPE BRIDGE



Oil Dock #6 North Pipe Bridge

EXISTING
PIPE BRIDGE

PROP. PIPE BRIDGE

Oil Dock #6 North Pipe Bridge

PROP. PIPE BRIDGE

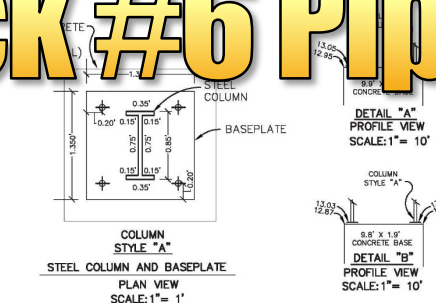


Oil Dock #6 North Pipe Bridge

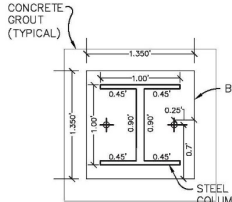


PROP. PIPE BRIDGE

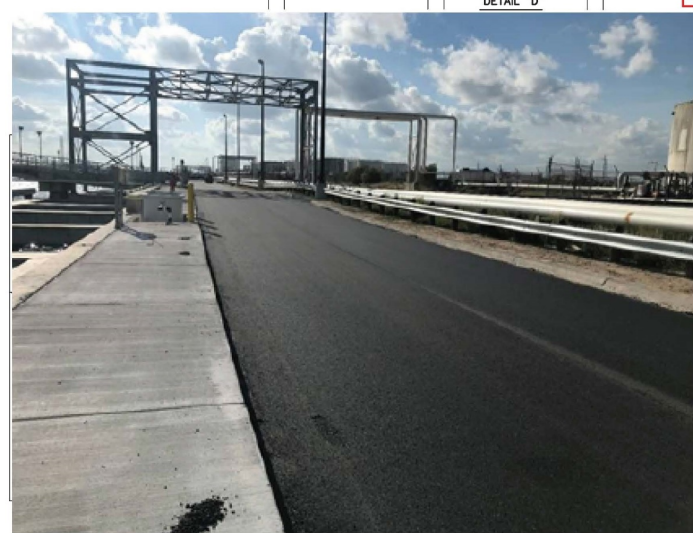
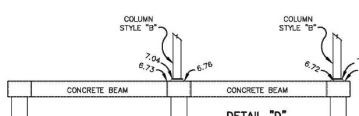
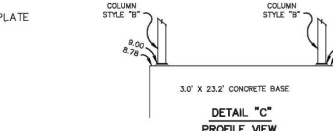
Oil Dock #6 Pipe Bridges



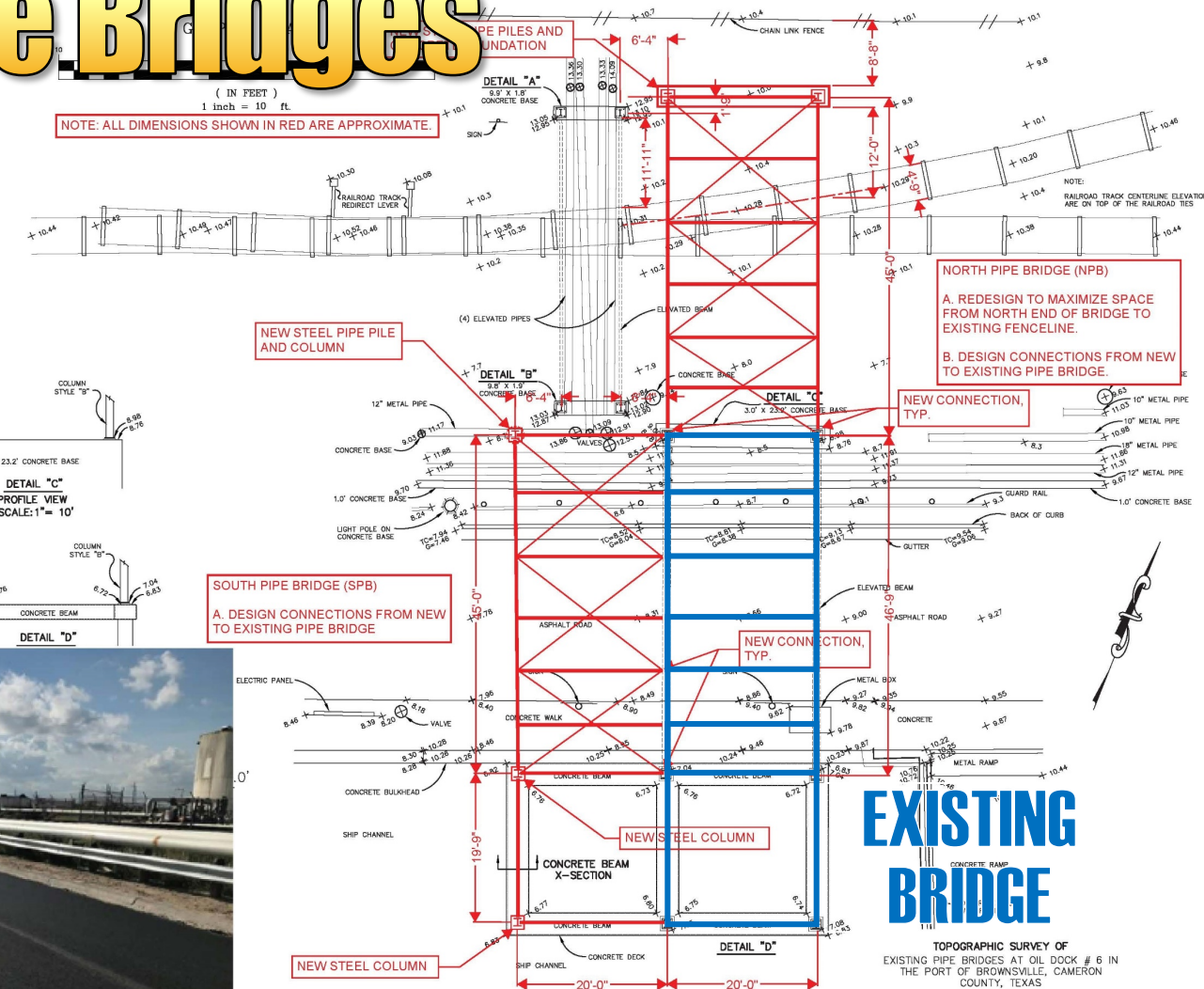
COLUMN STYLE "A" STEEL COLUMN AND BASEPLATE PLAN VIEW SCALE: 1" = 1'



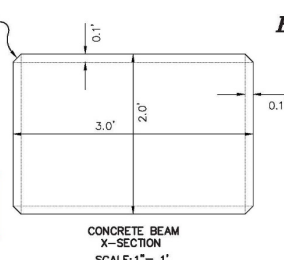
COLUMN STYLE "B" STEEL COLUMN AND BASEPLATE PLAN VIEW SCALE: 1" = 1'



CONCRETE BEAMS AND STEEL COLUMNS PLAN VIEW SCALE: 1" = 5'



CONCEPTUAL LAYOUT FOR NORTH AND SOUTH PIPE BRIDGE



EXISTING BRIDGE

TOPOGRAPHIC SURVEY OF EXISTING PIPE BRIDGES AT OIL DOCK # 6 IN THE PORT OF BROWNSVILLE, CAMERON COUNTY, TEXAS.
SCALE: 1" = 10'
PREPARED FOR:
BROWNSVILLE NAVIGATION DISTRICT
DECEMBER 06, 2019

Mejia & Rose, Incorporated
Engineering Surveying
T.B.P.E. Reg. No. F-002670
T.B.P.L.S Reg. No. 10023900
1643 West Price Road (956) 544-3022
P.O. Box 3761 Brownsville, Texas 78520
Fax (956) 544-3068
email: mandrinc@engmail.com

G.F. NO. N/A JOB NO. 20910

NEW STEEL PIPE PILES AND CONCRETE FOUNDATION

APPROXIMATE.

DETAIL "A"
9.9' X 1.8'
CONCRETE BASE

SIGN

RAILROAD TRACK
REDIRECT LEVEL

(4) ELEVATED PIPES

ELEVATED BEAM

DETAIL "B"
9.8' X 1.9'
CONCRETE BASE

CONCRETE BASE

DETAIL "C"
3.0' X 23.0'
CONCRETE BASE

**NEW CONNECTION,
TYP.**

NORTH PIPE BRIDGE (NPB)

**A. REDESIGN TO MAXIMIZE SPACE
FROM NORTH END OF BRIDGE TO
EXISTING FENCELINE.**

**B. DESIGN CONNECTIONS FROM NEW
TO EXISTING PIPE BRIDGE.**

CHAIN LINK FENCE

NOTE:

RAILROAD TRACK CENTERLINE ELEVATIONS
ARE ON TOP OF THE RAILROAD TIE

Agenda

3. Safety and Security

- a. Compliance with OSHA
- b. Coordination with Harbormaster

4. Contractor's Access to the Port

- a. Contractor's Vehicles/
Personnel – No Fee
- b. Delivery Vehicles/Personnel

Agenda

4. Contractor's Access to the Port

- c. ID Requirements: current & valid government-issued ID
- d. Transportation Worker's Identification Credential (TWIC) required for Oil Dock #3
- e. Free TWIC Escort training provided by BND Police Department

Agenda

5. Construction Process

- a. Coordinate delivery of pipe piles and steel structure to Oil Dock #6
- b. Coordinate access to project site
- c. Install concrete-filled pipe piles and support beam as required
- d. Install Base Plates

Agenda

5. Construction Process

- e. Install pipe bridge steel structure
- f. Perform Inspections
- g. Demobilize
- h. Staging Area for Materials –
Coordinate with and inform
Harbormaster and BND Police
- i. Contractor's risk

Agenda

6. Night Storage of Materials or Equipment

- a. No equipment left on streets at night
- b. Materials in designated staging area(s)
- c. Security is the contractor's responsibility

Agenda

7. Bid Package

- a. Bid Form
- b. Bid Bond
- c. Statement Of Non-Collusion
- d. Disclosure Of Interests
- e. Certificate & Definitions
- f. Contractor's Pre Bid Disclosure
- g. Subcontractor's Pre Bid Disclosure

Thank you!!

*ANY
QUESTIONS*

...



Thank you!!

