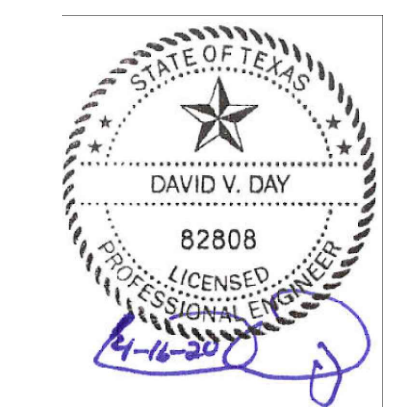


OIL DOCK #3
1000 FOUST RD.
BROWNSVILLE, TX. 78521

STRUCTURAL ENGINEER
CASA ENGINEERING
Civil & Structural Associates
1177 N. Sauer Blvd. Suite B
Harlingen, TX 78532
Phone 361-428-7960
www.casaeng.com
TEXAS REGISTERED ENGINEERING FIRM F-8483

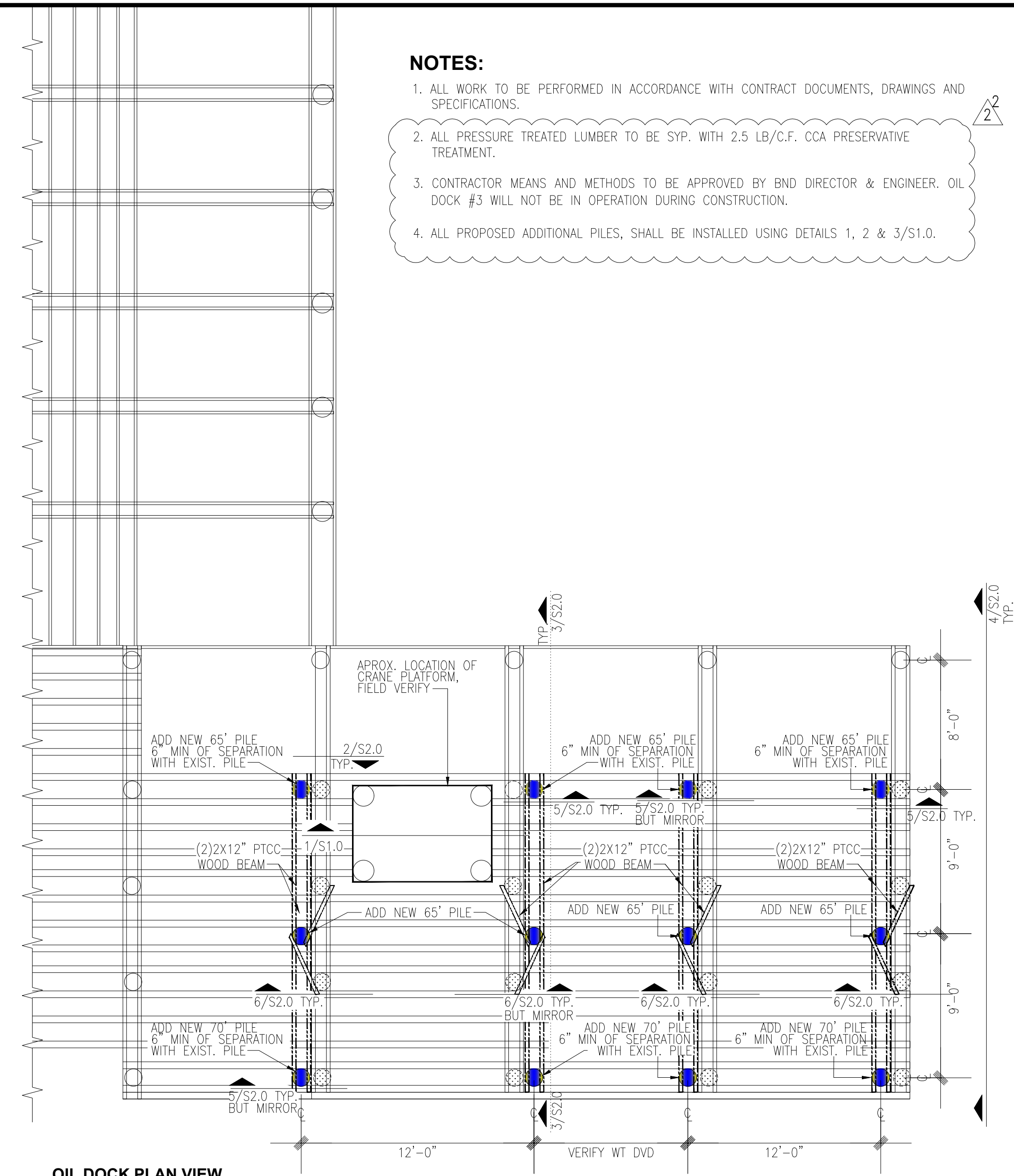


THE SEAL APPEARING ON THIS DOCUMENT WAS AUTHORIZED BY DAVID V. DAY, P.E. NO. 82808. ANY ALTERATION OF A SEAL DOCUMENT WITHOUT PROPER NOTIFICATION TO THE REGISTERING ENGINEER IS AN OFFENSE UNDER THE TEXAS ENGINEERING PRACTICE ACT.

CONTRACTOR

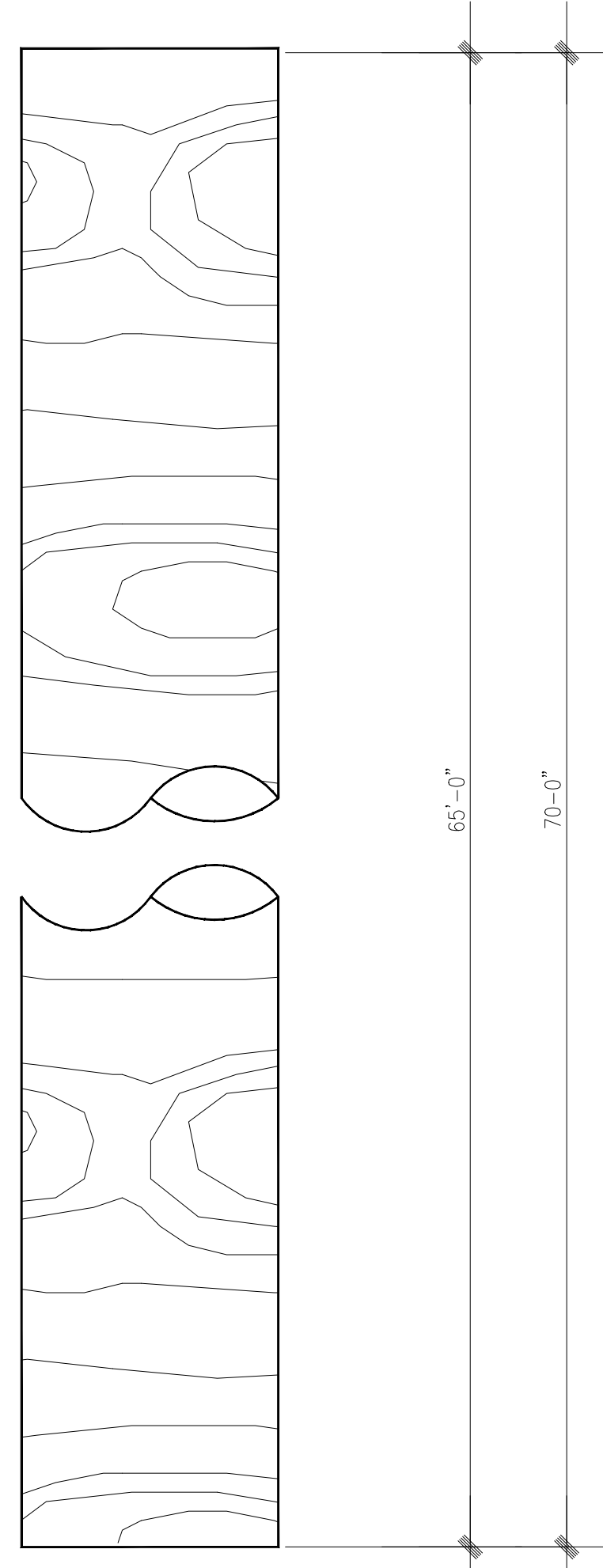
SHEETS
S1.0 STRUCTURAL DETAILS
S2.0 STRUCTURAL DETAILS

- NOTES:**
1. ALL WORK TO BE PERFORMED IN ACCORDANCE WITH CONTRACT DOCUMENTS, DRAWINGS AND SPECIFICATIONS.
 2. ALL PRESSURE TREATED LUMBER TO BE SYP, WITH 2.5 LB/C.F. CCA PRESERVATIVE TREATMENT.
 3. CONTRACTOR MEANS AND METHODS TO BE APPROVED BY BND DIRECTOR & ENGINEER. OIL DOCK #3 WILL NOT BE IN OPERATION DURING CONSTRUCTION.
 4. ALL PROPOSED ADDITIONAL PILES, SHALL BE INSTALLED USING DETAILS 1, 2 & 3/S1.0.

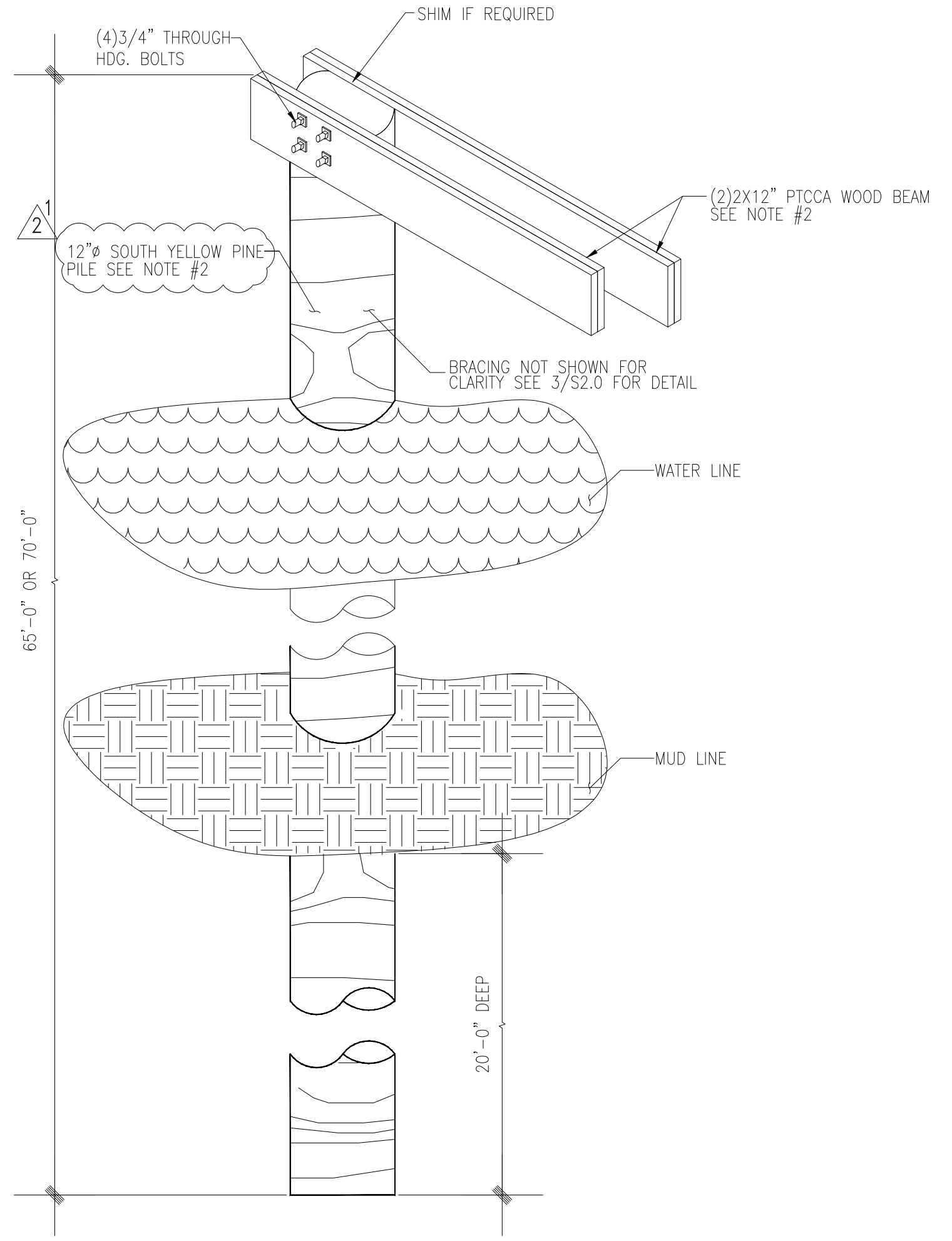


OIL DOCK PLAN VIEW
SCALE: N.T.S.

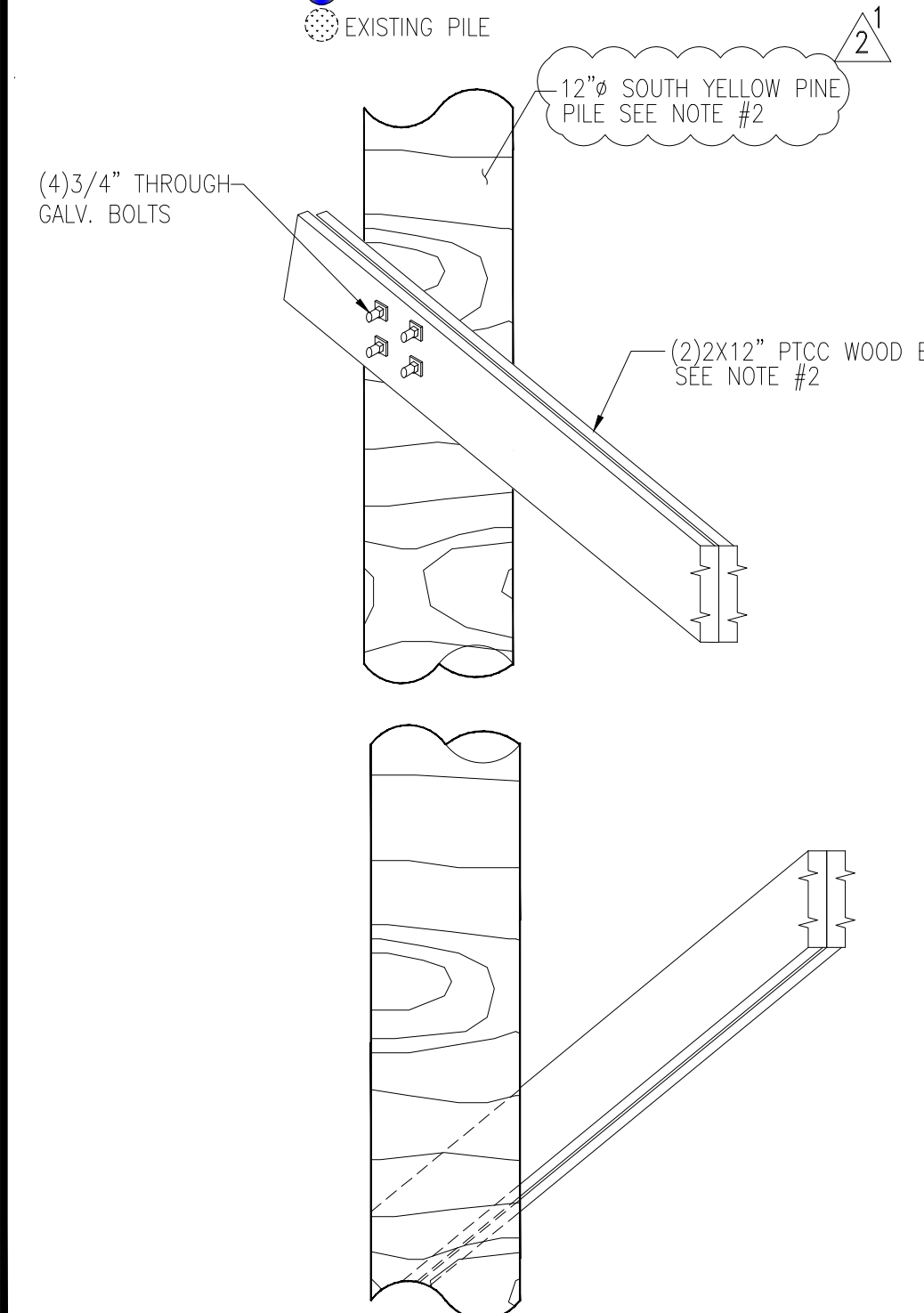
LEGEND:
● NEW PILE
● EXISTING PILE



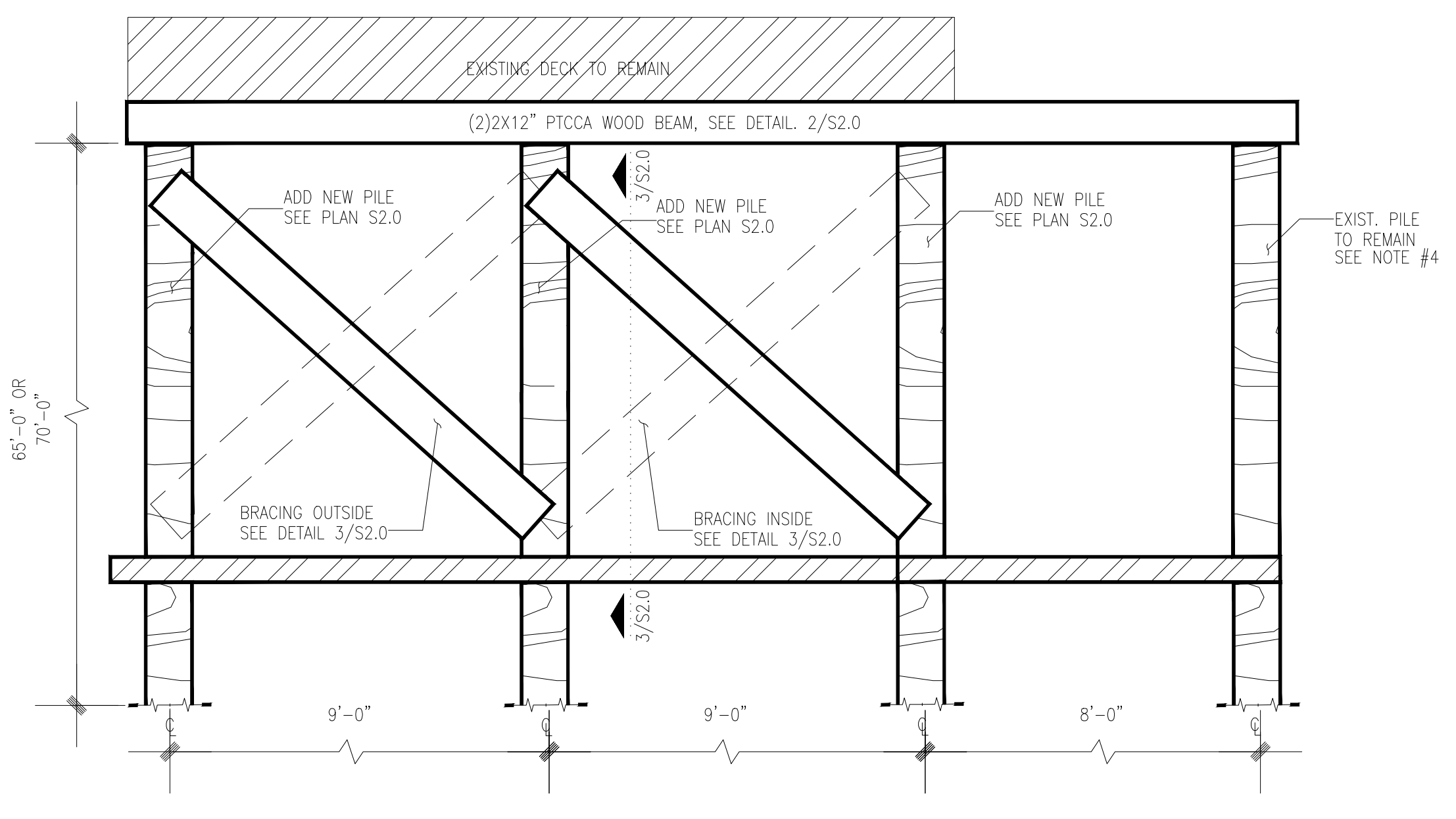
1 PILE DETAIL
SCALE: N.T.S.



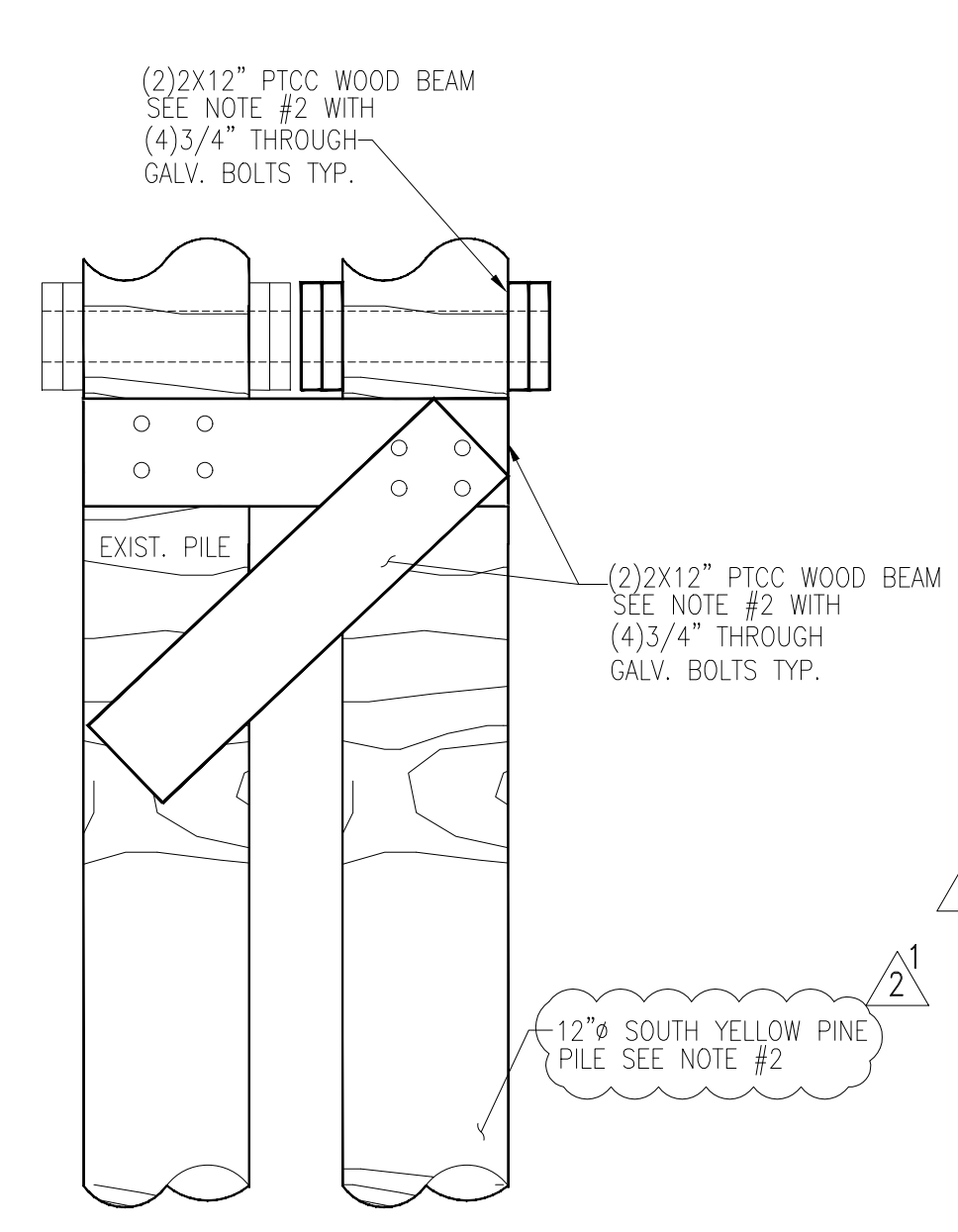
2 PLATFORM CAP DETAIL
SCALE: N.T.S.



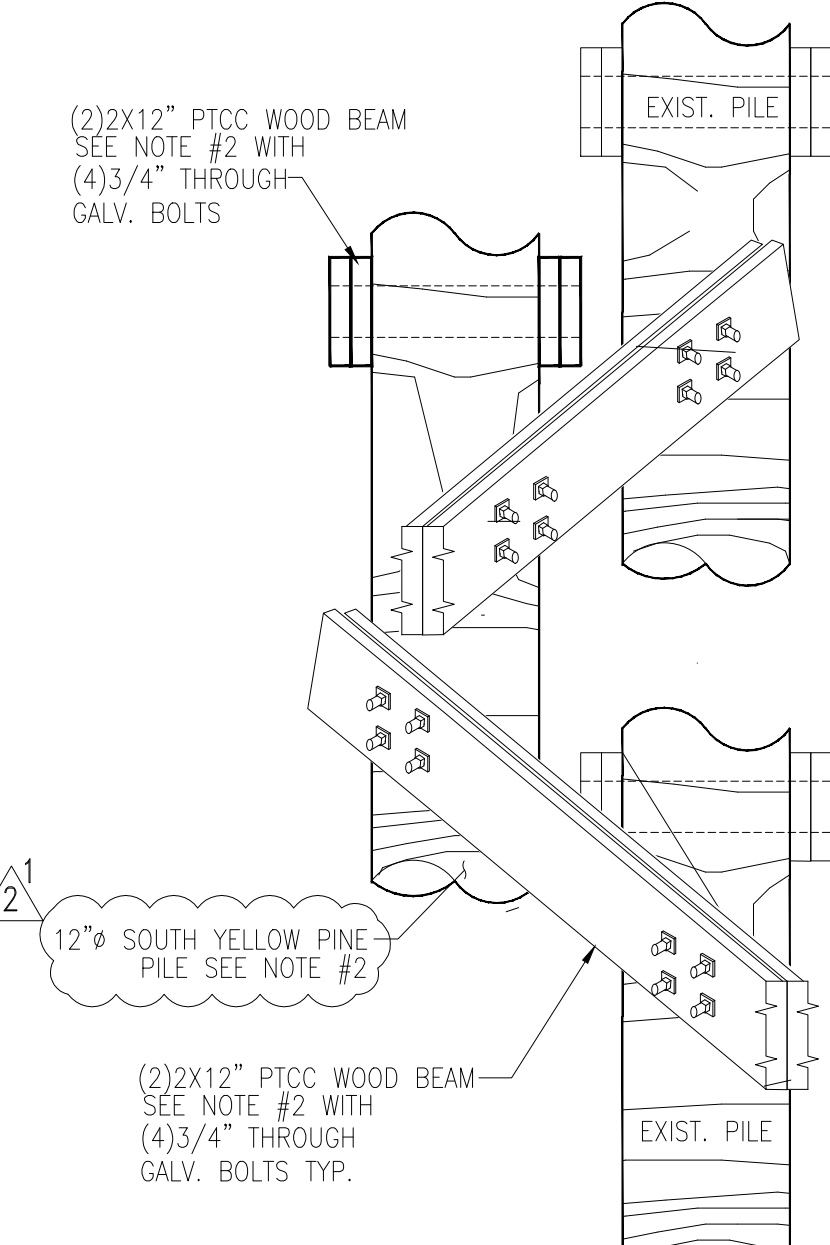
3 PILE BRACING DETAIL 1
SCALE: N.T.S.



4 PILE ELEVATION VIEW
SCALE: N.T.S.



5 PILE BRACING DETAIL 2
SCALE: N.T.S.



6 PILE BRACING DETAIL 3
SCALE: N.T.S.

REVISION	DESCRIPTION	DATE
1. CA	ADDED BRACING TO EXIST. PLATFORM	04.13.20
2. CA	1. UPDATED PILES INFORMATION S2.0 2. UPDATED NOTES ON S2.0	04.16.20

PROJECT NO: H202024-01
DATE: 03-22-2020
DRAWN BY: CA
DESIGNED BY: JVG

SHEET NO.
S2.0