

# State of the Port Address Highlights

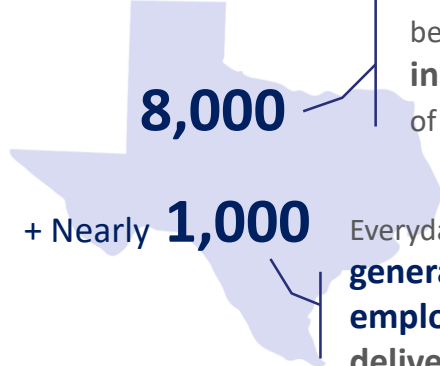
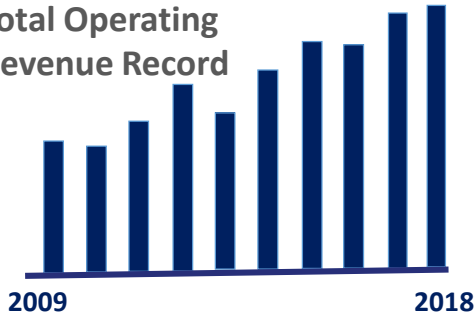
*Impactful, Improving, Expanding*



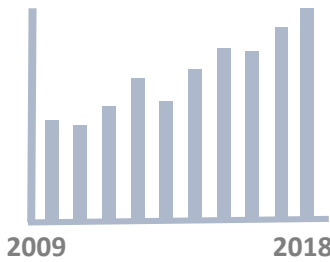
## IMPACTFUL

# \$24.2 Million

Total Operating Revenue Record



## IMPROVING



# 11.3 Million

Short Tons Cargo Moved

Truck counts are **dramatically on the rise**.



Rail car movements were **up 25%** from 36,709 to **46,043**.



## EXPANDING

**8,000** construction jobs at peak construction.

All together accounting for **845** full-time **permanent jobs**.

- Rio Grande LNG
- Annova LNG
- Texas LNG
- Big River Steel



## Other Projects



**SpaceX**  
Key support player



**Oil Dock 6**  
To be in service by second quarter



**Keppel AmFELS Building Deep-Draft Ships**  
Only place in Texas

**52-Foot Channel Deepening**  
U.S. Army Corps of Engineers' issuing permits by years end.  
**\$350M** Investment