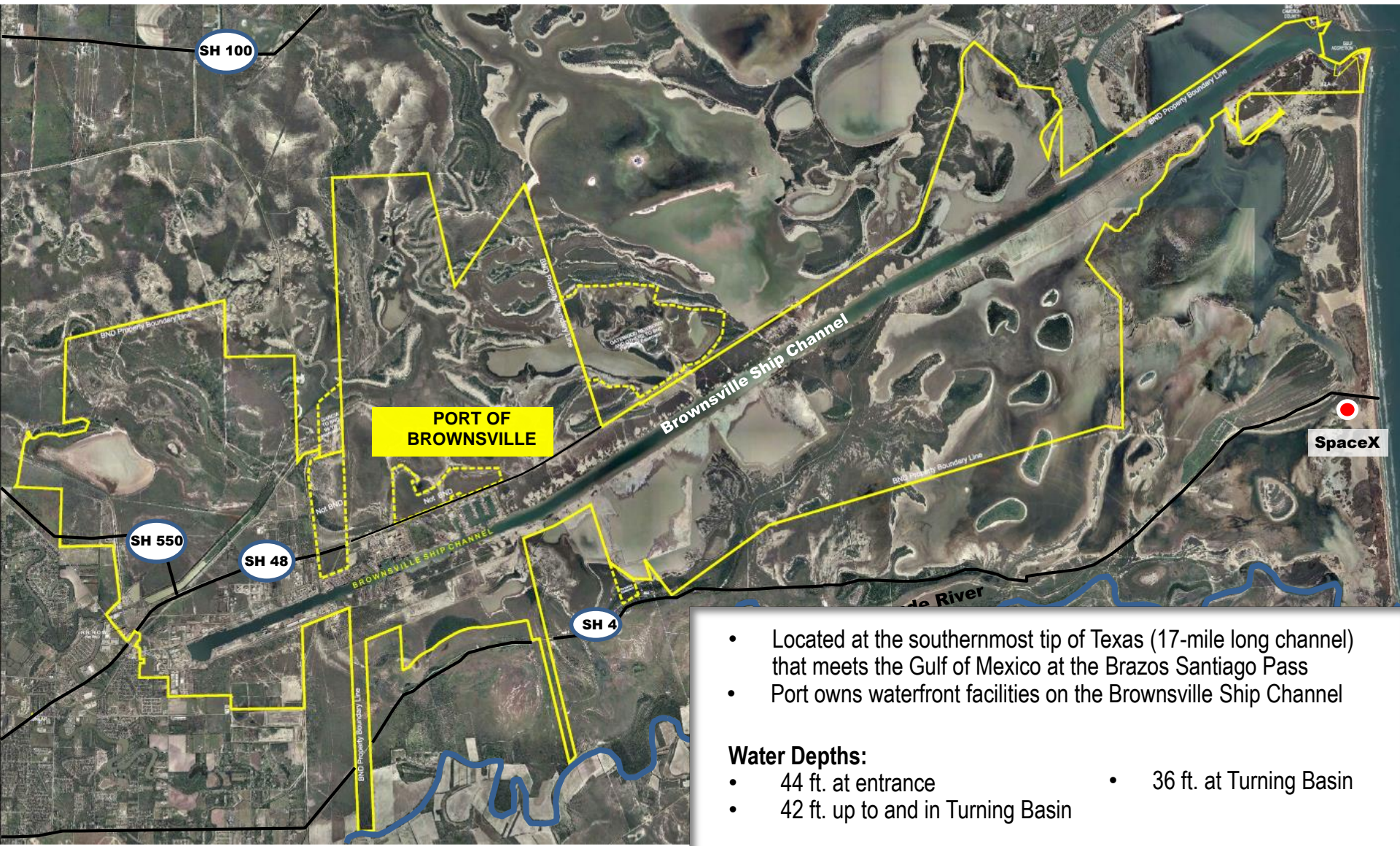


Port of Brownsville



- Located at the southernmost tip of Texas (17-mile long channel) that meets the Gulf of Mexico at the Brazos Santiago Pass
- Port owns waterfront facilities on the Brownsville Ship Channel

Water Depths:

- 44 ft. at entrance
- 42 ft. up to and in Turning Basin
- 36 ft. at Turning Basin